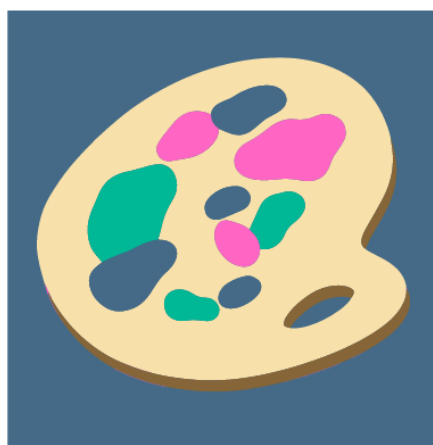




# FINE ARTS, CRAFTS & HOBBIES



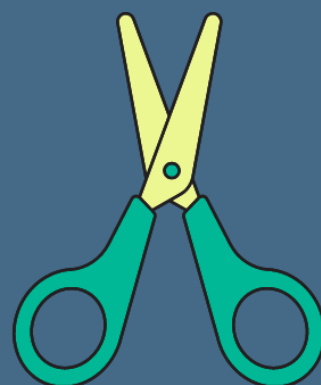
'24  
COMP  
GUIDE

## FREE REGISTRATION:

July 1 - August 15

Find Your Contests Inside!

[okstatefair.com/competitions/creative-arts](https://okstatefair.com/competitions/creative-arts)



**OKLAHOMA  
STATE FAIR**

# **MISSION STATEMENT**

Oklahoma State Fair, Inc. is a 501(c)(3) not-for-profit corporation that serves the people of Oklahoma and is dedicated to continuing the organization's heritage of education, entertainment, and economic development through the operation of the OKC Fairgrounds and the annual Oklahoma State Fair.



The header features a vibrant pink background with diagonal rays. In the top left, there are several markers with colorful patterns. In the top center, a yellow eraser with the word 'ERASE' is visible. In the top right, a pair of scissors is shown. The text 'New FINE ARTS, CRAFTS & HOBBIES DEPT.' is prominently displayed in the center, with 'New' in a large, bubbly, yellow font and the rest in a bold, yellow, outlined font.

# New FINE ARTS, CRAFTS & HOBBIES DEPT.

**TAKE IN WEEKEND - AUG. 24 - 25**

**MAJOR NEUROCOGNITIVE CRAFTS (PG. 21)**

**FROM THE BEEHIVE: CUT COMB & BEESWAX (PG. 22)**

**TABLE DECORATING CONTEST - HELPFUL HEROES (PG. 24)**

**SCRAPBOOK CHALLENGE - BABY ANNOUNCEMENT (PG. 26)**



# 2024 Creative Arts Program

## Fine Arts, Crafts & Hobbies Competition Guide

### Table of Contents

Click on each contest to get more information!

Oklahoma State Fair Mission Statement.....	Pg. 2
What's New .....	Pg. 3
Calendar of Events .....	Pg. 5
Social Media Info .....	Pg. 6
Creative Arts Drop-Off, Pick Up & Directions .....	Pg. 7
Entry Info & Department Regulations .....	Pg. 8
Preparing Your Artwork For Display.....	Pg. 9

### FINE ARTS, CRAFTS & HOBBIES DIVISIONS:

Fine Arts (3500).....	Pg. 10
Decorative Painting (3501-3503).....	Pg. 10
Hand Painted Furniture (3504).....	Pg. 11
Collections (3505).....	Pg. 11
Misc. Crafts (3506) .....	Pg. 12
Miniatures (3507).....	Pg. 12
Trash 2 Treasure: Recycled Crafts (3508) .....	Pg. 13
Egg Art (3509) .....	Pg. 13
Woodcarving (3510-3511) .....	Pg. 14
Woodworking Woodburning (3512-3513).....	Pg. 14
Let's Celebrate! (3514).....	Pg. 15
Stamping (3515).....	Pg. 15
Scrapbooking (3516) .....	Pg. 16
Leathercrafting (3517) .....	Pg. 16
Woodturning (3518).....	Pg. 17
Beadwork (3519).....	Pg. 17
Polymer Clay Creations (3520) .....	Pg. 18
Basketweaving (3521).....	Pg. 19
Developmentally Disabled Crafts (3522).....	Pg. 20

Major Neurocognitive Crafts (3523).....	Pg. 21
From the Beehive (3524).....	Pg. 22

### LIVE CONTESTS

<b>LIVE:</b> Fancy Feet Contest (3525).....	Pg. 23
<b>LIVE:</b> Voice of the Fair - .....	Pg. 23
Poetry Contest (3526)	
<b>LIVE:</b> Table Decorating Contest (3527).....	Pg. 24
<b>LIVE:</b> Best Dressed Pumpkin Contest (3528) ...	Pg. 25
<b>LIVE:</b> Breast Cancer Awareness: .....	Pg. 25
Beautiful Bras! (3529)	
<b>LIVE:</b> Scrapbook Challenge: .....	Pg. 26
Announcement Card (3530)	
<b>LIVE:</b> Oklahoma Mural Challenge (3532).....	Pg. 27

### STAFF CONTACTS

Brenda Edge  
Superintendent  
405-250-4282

Morgan Chappell  
Creative Programs Manager  
[CreativePrograms@okstatefair.com](mailto:CreativePrograms@okstatefair.com)  
405-948-6731

### 2024 Creative Arts Quick Reference Guide

**Creative Arts registrations must be submitted online.**

Starting July 1, [CLICK HERE](#) to register.

#### Competition Guides

##### Posted Online:

Saturday, June 1

##### Registration:

Monday July 1, 9 a.m. - Thursday, August 15

##### Deliver Exhibits:

Saturday, August 24, 10 a.m. - 4 p.m.  
Sunday, August 25, 11 a.m. - 4 p.m.

##### Pick Up Exhibits:

Monday, September 23, 2 - 7 p.m.  
Tuesday, September 24, 9 a.m. - 2 p.m.

# Creative Arts Calendar of Events

Schedule for free registration: July 1 at 9 a.m. through August 15

**FREE REGISTRATION MUST BE DONE ONLINE.** If you do not have computer access, please go to your local library or contact your local OSU Cooperative Extension Services.

**Late registration:** We no longer accept late registration, but we will have on-site registration during take-in.

**On-site registration:** August 24, from 10 a.m. to 4 p.m. and August 25, from 11 a.m. to 4 p.m. Exhibitors will be charged a \$12 fee per exhibitor (not per entry). **Credit or Debit cards will only be accepted.**

Highlighted Below Are 2024 Date Changes. Please be aware.

## CALENDAR

June 1	New competition guides posted online.
July 1	Online registration opens at 9 a.m.
August 15	Entry deadline for the Oklahoma State Fair Creative Arts competitions and contests. Free registrations must be received online by August 15.
August 16	<b>We will no longer accept late online registrations,</b> but you will be able to register on site during take-in with a small fee of \$12 per exhibitor. <u>All entries</u> will be turned in on the listed check-in days or on the day of the live contest.
August 24	Entry clerks will receive items at the Creative Arts Building from 10 a.m. to 4 p.m. Late registration will be available to enter with a \$12 late registration fee done electronically.
August 25	Entry clerks will receive items at the Creative Arts Building from 11 a.m. to 4 p.m. Late registration will be available to enter with a \$12 late registration fee done electronically.
August 26 - September 9	All Creative Arts entries judged (excludes live contest entries). This is closed judging. Exhibitors are not permitted to attend. We encourage you to come to the Fair to view results. Judging results will be posted online as soon as they are available, possibly after the end of the State Fair. <b>Do not call or email to ask for results. They cannot be given out prior to posting.</b>
September 12	Oklahoma State Fair opens! The Creative Arts Building will host a series of demonstrations, live contests, and special events every day of the Fair.
September 22	Last day of the Oklahoma State Fair.
September 23	Entry clerks will release exhibits upon presentation of claim check at the Creative Arts Building from 2 to 7 p.m.
September 24	Entry clerks will release exhibits upon presentation of claim check at the Creative Arts Building from 9 a.m. to 2 p.m. Items not picked up become property of the Oklahoma State Fair.



SHOW US WHAT YOU'RE WORKING WITH

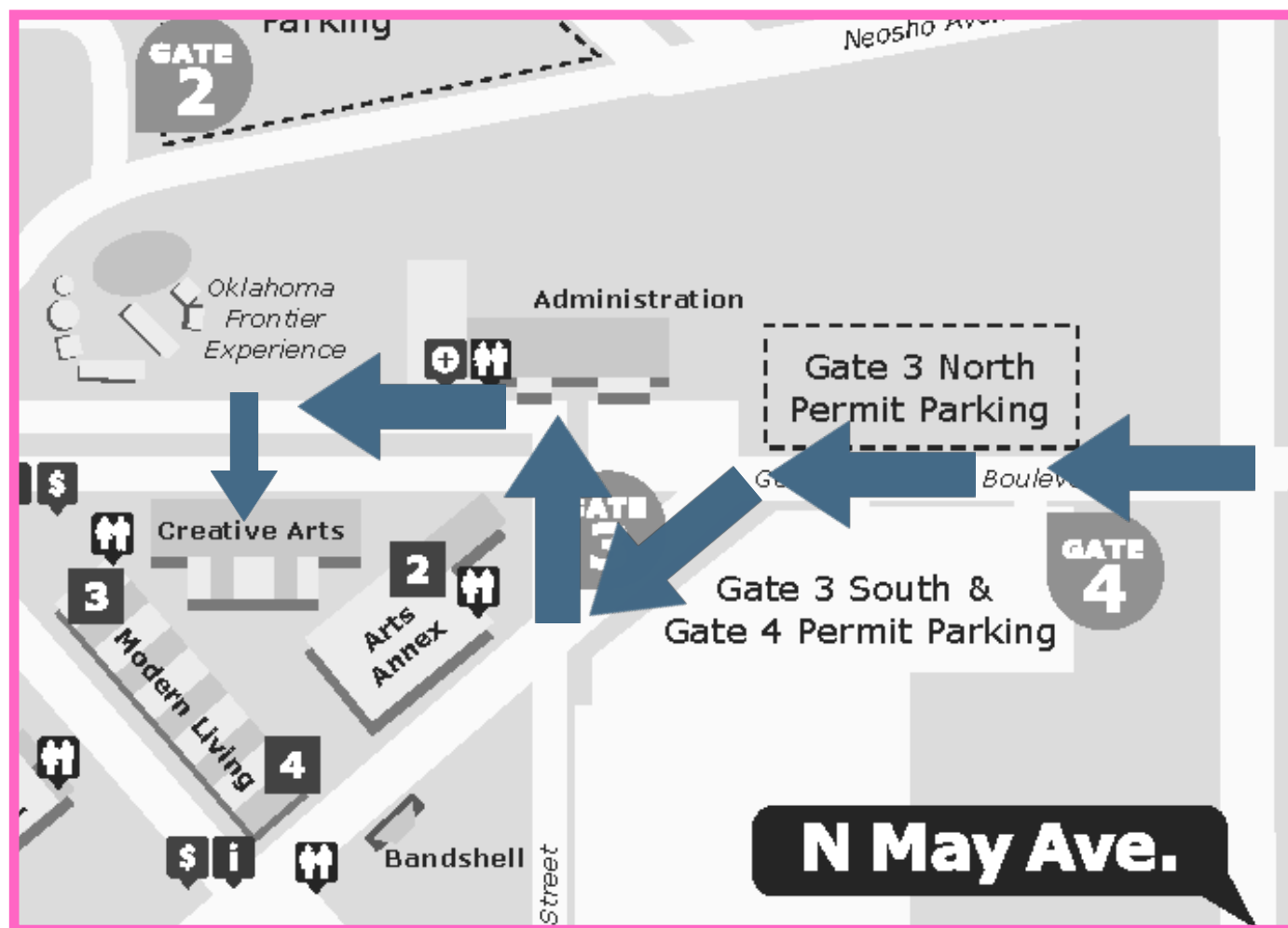


**We know sometimes it takes all year to create something magical to enter in the Fair, or just a few days! Share your progress with us! Tag the Fair when you share your creations and ribbons by using #okstatefair!**



**@okstatefair**

# Creative Arts Drop-Off & Pick Up Map & Information



## How To Get Here: Pre-Fair

Our physical address is 3100 General Pershing Blvd, OKC, OK 73107.

From I-44 take the NW 10th St. eastbound exit and follow until NW 10th St. and May Ave. (2nd light). Turn right onto May Ave. Proceed to Gate 3 (1st light) and drive towards the gate. You will then enter the OKC Fairgrounds and make your way to the Creative Arts Building.

## Drop-Off Information

Drop-off is Saturday, August 24 from 10 a.m. - 4 p.m. and Sunday, August 25 from 11 a.m. - 4 p.m. At check-in you will be given a claim check tag. PLEASE SAVE THESE as they are what you will need to pick up your item(s).

## Pick Up Information

Pick up is Monday, September 23 from 2 - 7 p.m. and Tuesday, September 24 from 9 a.m. - 2 p.m. Please remember to bring your claim check tag as this is how you reclaim your pieces. If you have misplaced your claim check tag, please bring a current photo ID of the exhibitor.

# CREATIVE ARTS RULES AND REGULATIONS

## ENTRY INFORMATION

**Who Can Enter?** ONLY OKLAHOMA RESIDENTS may enter our contests. Exhibitors entering must be amateurs unless an Open (expert) Division is offered.

**Who is considered an Amateur?** Someone who earns less than 10% of their income from this skill. If you have taught this craft before, or currently teach, you are not considered an Amateur, but may enter in an open class, if available.

**Are there any size limitations?** Furniture may be no larger than 40" in any direction. All other exhibits are limited to 30" in any direction.

**How many exhibits can be entered?** ONE ENTRY PER CLASS (unless otherwise stated.) There is no limit on the total number of entries. Photography is the exception with 12 total entries allowed per exhibitor. All entries must have been completed since the final day of the previous Oklahoma State Fair.

**Can I enter something I have entered in the pass?** Unless otherwise specified, items can only be entered once.

**What is the cost to enter?** CREATIVE ARTS ENTRIES ARE FREE if registered by August 15. (Only the wine contest requires an entry fee.)

**May I mail in my exhibit?** No.

**Do I need to pre-register for live contests?** Yes. You cannot register the day of.

**How do I get into the Fair if I am entered in a live contest?** **ONLY EXHIBITORS** receive FREE ENTRY AND PARKING with live contests. Family and friends will need to purchase a ticket to get in the day of the contest. Please check out our pre-sale of tickets starting in July and ending the day before the start of the Fair.

**All entries must be the work of the exhibitor and completed since the previous Oklahoma State Fair except as noted.**

## CREATIVE ARTS DEPARTMENT REGULATIONS

- The Oklahoma State Fair reserves the right to reject any exhibit offered if it is objectionable in any way, if it requires an excessive amount of space, or if the capacity of the department has been reached. Any contest may be cancelled for lack of entries.
- Each item turned in is completed by one person, unless otherwise noted in the competition information.
- All work must be original. Art reproduced or rendered from works of masters, from advertisements, materials from published sources, or from widely circulated photographs is not original. AI art is not allowed, unless specified by the rules.
- Your items will be handled with care, however, Oklahoma State Fair, Inc. is not responsible for items that are damaged or lost while on display during the Fair. If the exhibitor feels it necessary, they must purchase their own insurance at their own expense. Exhibitors MAY NOT supply their own display stands. Only OSF stands will be used for display.
- Each exhibit will be evaluated by qualified individuals and the decision of the judge(s) is final. All cash prizes will be paid from the awards as marked by the judges and not from ribbons that may be attached to the exhibits. Judges are instructed not to award cash prizes unless the exhibit is deemed worthy of the placing awarded. Premium payouts for the Creative Arts Department will be mailed to exhibitors after the close of the Fair.
- Within 90 days from the last day of the 2024 Oklahoma State Fair, it is the responsibility of the Payee to file, in writing, a claim for lost or incorrect awards.
- If it is ascertained that an exhibitor has made any false statement with regards to any article or exhibit, or if any exhibitor attempts to harass or interfere with the judge or judges in the performance of their duties, the exhibitor shall be excluded from competition and forfeit all premiums.
- Any protest must be made in writing and accompanied by a deposit of \$50, which will be forfeited if protest is not sustained. Said protest must state plainly the cause of complaint or appeal and must be filed with the Creative Programs Manager by 5 p.m. on Thursday of the closing week of the Fair. Judges will be encouraged to view exhibits after items have been placed on display with names. If they believe that an exhibitor is not in the correct skill level, that judge will be encouraged to protest the placement.
- Every effort will be made to display entries in an attractive arrangement; however, items entered for competition will be displayed through 3rd place. Other entries will be displayed only as space is available and at the discretion of the superintendents.

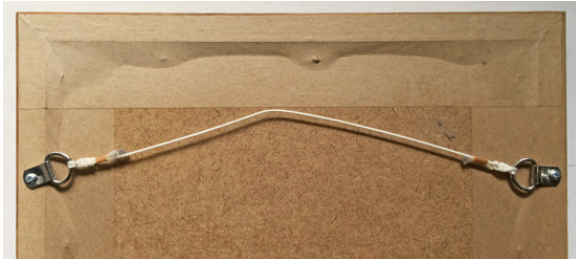


## PREP YOUR ARTWORK FOR DISPLAY

To insure artwork is handled/hung correctly, follow these following steps.

All pieces should be mounted so they can be hung. This includes pieces drawn on paper, flat-backed canvases and pieces just in matting. If your artwork is flat or a piece of paper, attach it to a black piece of posterboard with no more than 2" border around the artwork.

Acceptable ways to hang items are to include d-ring with wire to hang, sawtooth hanger, or a soda pop tab hot/super glued to the back of your piece. Framed pieces will also be accepted.



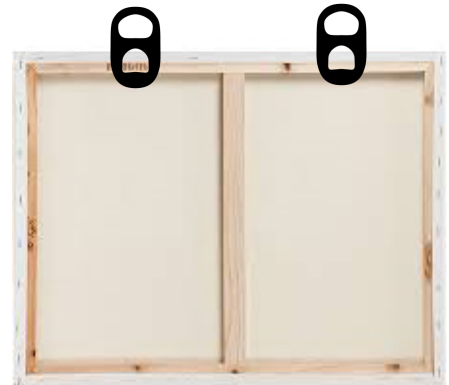
D-ring with wire



Sawtooth hanger



Drawing on white paper matted  
& soda pop tab for hanging



Soda pop tab holder

For three-dimensional pieces, if there is a proper way to display, please include a note and tape to the bottom so we can display your item correctly.

## FINE ARTS Division 3500

Reproductions from art books, magazines, etc. will be disqualified. If a painting is done from a pattern, it must be entered in Class 08. Pictures must be ready to hang or they will not be displayed.

Exhibitors may enter ONLY ONE exhibit per class.

Exhibits are limited to 24" x 30" including frame.

- 01. Paintings, all media
- 02. Watercolor
- 03. Drawings, all media
- 04. Pastels
- 05. Prints, all media

- 06. Sculpture, all media
- 07. Commercial art
- 08. Art from a pattern (not paint by color)
- 09. Miscellaneous

### AWARDS

Ribbons will be awarded through 10th place in each class.

**BEST OF SHOW** ..... Rosette, Medallion & \$50

**PORTFOLIO AWARD\*** ..... Rosette & \$25

**SUPERINTENDENT'S CHOICE AWARD** ..... Rosette & \$25

\*Based on number of exhibits and awards

## DECORATIVE PAINTING Division 3501-3503

Decorative painting is a diverse art form utilizing a variety of techniques and media to decorate functional surfaces including: stenciling, faux finishing, bronzing, gold leafing, country painting, theorem and graining.

Paintings on fabric/canvas will only be accepted in Fine Arts Division 3500. Exhibits are limited to 24" x 30" including frame.

Two dimensional decorative painting must be ready to hang or will not be displayed.

### Division 3501, Novice

For painters who have been painting less than 2 years.

- 01. People
- 02. Seasonal
- 03. Nature
- 04. Miscellaneous

### Division 3502, Amateur

For painters who have been painting 2-4 years.

- 01. People
- 02. Seasonal
- 03. Nature
- 04. Miscellaneous

### Division 3503, Open Class

For painters with all levels of experience.

- 01. Tole
- 02. Flowers
- 03. People
- 04. Animals, birds, fish
- 05. Landscapes/scenes
- 06. Seasonal
- 07. Miscellaneous

### AWARDS

Ribbons will be awarded through 10th place in each class.

**BEST OF SHOW, Novice** ..... Rosette & \$25

**BEST OF SHOW, Amateur** ..... Rosette & \$25

**BEST OF SHOW, Open** ..... Rosette & \$25

## HAND PAINTED FURNITURE

### Division 3504

Furniture not to exceed 40" in any direction.

Exhibitors may enter 2 exhibits - must be noted on entry form/online entry.

01. All hand painted furniture

#### AWARDS

Ribbons will be awarded through 10th place in each class.

**1st Place** ..... Rosette & \$50

**2nd Place** ..... Ribbon & \$25

**3rd Place** ..... Ribbon & \$15

## COLLECTIONS

### Division 3505

Each collection must contain at least 5 pieces and a display no larger than 16" x 20".

Collections must be attached to the display board or box to be considered one entry.

Pin and button collections must be enclosed in a frame or attached on a display board.

**Please note: No loose collections or sets will be accepted. If it "wiggles and wobbles," it will not be accepted.**

01. Stamps, spoons, thimbles

02. Glass items

03. Metal items

04. Paper items

05. Buttons (political campaigns, etc.)

06. Pins (trading pins, company pins, etc.)

07. Patches, badges (embroidered or sewn)

08. Miscellaneous

#### AWARDS

Ribbons will be awarded through 10th place in each class.

**BEST OF SHOW**..... Rosette & \$25

## MISCELLANEOUS CRAFTS

### Division 3506

All exhibits that require hanging for display should be brought with hanger, wire or other hanging device attached and ready to hang. List a brief description on the entry form/online entry.

Exhibits are limited to 24" x 30" including frame.

- |  |   |
|--|---|
| 01. Candle, original by exhibitor            | 12. Best original design using glass                                    |
| 02. Stained glass                            | 13. Best original design using paper                                    |
| 03. Fabric craft, functional                 | 14. Best original design using dried flowers<br>or other natural fibers |
| 04. Fabric craft, decorative                 | 15. Best original design using clay pots                                |
| 05. Plastic canvas quick point               | 16. Perler Beads  |
| 06. Mobiles                                  | 17. Lidded boxes  |
| 07. Etched glass (not exceeding 30")         | 18. Teddy bears   |
| 08. Silk flower arrangement                  | 19. Clothing and accessories  |
| 09. Best original design using gourds        | 20. Miscellaneous   |
| 10. Best original design using seashells     |   |
| 11. Best original design using wood or metal |   |

#### AWARDS

Ribbons will be awarded through 10th place in each class.

**BEST OF SHOW..... Rosette & \$30**

**2nd Place Overall..... Mini-Rosette & \$15**

**3rd Place Overall ..... Mini-Rosette & \$10**

## MINIATURES

### Division 3507

Doll houses should have full glass or Plexiglas cover, with all items securely anchored.

Designated piece(s) from doll houses must be labeled for individual judging.

Entry is not open to professionals who make miniatures.

Indicate scale on entry form/online registration.

Maximum dimensions - 40 lbs, 28" width, 30" length (Exhibitors must be able to handle exhibits without assistance.)

- |                   |                             |
|-------------------|-----------------------------|
| 01. Doll house    | 04. Furniture & accessories |
| 02. Room settings | 05. Doll house dolls        |
| 03. Vignettes     | 06. Miscellaneous           |

#### AWARDS

Ribbons will be awarded through 10th place in each class.

**BEST OF SHOW.....Rosette & \$30**

**2nd Place Overall..... Mini-Rosette & \$15**

**3rd Place Overall ..... Mini-Rosette & \$10**

## TRASH 2 TREASURE: RECYCLED CRAFTS Division 3508

Entries must incorporate recycled items or use existing items in a new way.

Entries must be at least 50% recycled (unless otherwise stated).

Items may not exceed 30 lbs in weight or 30" in any direction.

### Judging Criteria:

Percentage of recycled material used - 30%

Creative use of materials - 40%

Practicality/Durability: submissions are practical and durable - 10%

Coolness Factor/Aesthetics: submissions are unique, interesting, and/or visually pleasing/stimulating - 20%

- |   |                              |
|---|------------------------------|
| 01. Clothing  | 05. Interior decorative item |
| 02. Jewelry/accessory                                     | 06. Exterior decorative item |
| 03. Hats/purses   | 07. 100% recycled item       |
| 04. Usable item - any item that may be used in daily life | 08. Miscellaneous            |

### AWARDS

Ribbons will be awarded through 10th place in each class.

**BEST OF SHOW.....Rosette & \$25**

**2nd Place Overall..... Mini-Rosette & \$15**

**3rd Place Overall ..... Mini-Rosette & \$10**

## EGG ART Division 3509

Real eggs only.

- |   |  |
|---|--|
| 01. Decoupage on egg  | 05. Hand-painted egg (any style of egg, at least one half of the egg must be painted, inside or outside) |
| 02. Miniature egg (any style of egg but egg must be smaller than a chicken egg)                             | 06. Seasonally decorated egg   |
| 03. Hinged egg  | 07. Gold leaf egg  |
| 04. Diorama (one or more openings, no hinges, miniature scene with figures in a natural setting within egg) | 08. Miscellaneous  |

### AWARDS

Ribbons will be awarded through 10th place in each class.

**BEST OF SHOW..... Mini-Rosette & \$25**

**2nd Place Overall..... Mini-Rosette & \$10**

**3rd Place Overall ..... Mini-Rosette & \$5**

## WOODCARVING

### Division 3510-3511

No more than TWO (2) entries per class will be accepted from each exhibitor. Indicate both exhibits on the online entry. Items cannot exceed 30 lbs in weight or 24" x 30" in size. Sculpture of carving in the round.

**Division 3510, Amateur** - Less than 2-4 years of experience.

01. All Novice Entries

**Division 3511, Open** - Over 4 years of experience (including teachers and professionals).

01. Animals, birds, or fish

02. People

03. Caricatures

04. Plaques/Pictures

05. Miscellaneous

#### AWARDS

Ribbons will be awarded through 10th place in each class.

**1st Place, Amateur Class** ..... Rosette & \$15

**BEST OF SHOW, Open Class** ..... Rosette & \$25

**Superintendent's Choice in Woodcarving** ..... Rosette & Medallion

## WOODWORKING

### Division 3512

No more than TWO (2) entries per class will be accepted from each exhibitor. Indicate both exhibits on the online entry.

01. Woodworking - small furniture

02. Woodworking - toys

03. Woodworking - scroll saw

04. Woodworking - intarsia (puzzle-like)

05. Woodworking - miscellaneous

#### AWARDS

Ribbons will be awarded through 10th place in each class.

**BEST OF SHOW, Woodworking** ..... Rosette & \$25

**Superintendent's Choice in Woodworking** ..... Rosette & Medallion

## WOODBURNING

### Division 3513

No more than TWO (2) entries will be accepted from each exhibitor. Indicate both exhibits on the online entry.

01. Woodburning - all classes

#### AWARDS

Ribbons will be awarded through 10th place in each class.

**1st Place** ..... Rosette & \$15



## LET'S CELEBRATE!

### Division 3514

No Ceramics.

Wreaths cannot be larger than 24". Other items may not exceed 24" x 30" when folded.

No perishable items.

#### CHRISTMAS

01. Wreath
02. Fabric craft
03. Tree decoration
04. Centerpiece/door decoration
05. Character (Santa, snowman, etc.)
06. Miscellaneous Christmas

#### THANKSGIVING

07. Door decoration
08. Centerpiece
09. Miscellaneous Thanksgiving

#### EASTER

10. Centerpiece/door decoration
11. Fabric craft
12. Basket
13. Miscellaneous Easter

#### HALLOWEEN

14. Centerpiece
15. Door decoration
16. Character
17. Pumpkin
18. Miscellaneous Halloween

#### ANY OTHER HOLIDAY OR CELEBRATION

19. Centerpiece
20. Door decoration
21. Miscellaneous Holiday

#### AWARDS

Ribbons will be awarded through 10th place in each class.

**BEST OF SHOW, Christmas ..... Rosette & \$25**

**BEST OF SHOW, Thanksgiving..... Rosette & \$25**

**BEST OF SHOW, Easter ..... Rosette & \$25**

**BEST OF SHOW, Halloween ..... Rosette & \$25**

**BEST OF SHOW, Any other Holiday ..... Rosette & \$25**

## STAMPING

### Division 3515

Handcrafted materials utilizing a stamp process to create.

01. Greeting cards

02. Miscellaneous

#### AWARDS

Ribbons will be awarded through 10th place in each class.

**BEST OF SHOW ..... Mini-Rosette & \$20**

## SCRAPBOOKING

### Division 3516

For all scrapbook page entries, a double page layout will be necessary for judging. Please put your pages in clear page protectors before entering. No full books accepted.

DO NOT TAPE YOUR SCRAPBOOK PAGES TOGETHER. Wire or tie the pages together.

As a reminder, only ONE (1) entry per class.

- 01. Creativity
- 02. Punch art, die cuts and embellishments
- 03. Borders
- 04. Miscellaneous

#### AWARDS

Ribbons will be awarded through 10th place in each class.

**BEST OF SHOW** ..... Rosette & \$20

## LEATHERCRAFTING

### Division 3517

Exhibitors may enter in only one area - Novice, Advanced, Youth or Professional. Items may not exceed 30" in any direction.

#### YOUTH - Kits Permitted

- 01. Youth - stamped and/or tooled
- 02. Youth - open

#### ADVANCED - Kits NOT Permitted

- 05. Advanced - stamped and/or tooled
- 06. Advanced - open

#### NOVICE - Kits Permitted

- 03. Novice - stamped and/or tooled
- 04. Novice - open

#### PROFESSIONAL - Kits NOT Permitted

- 07. Leather article – stamped and/or tooled
- 08. Leather article – open

#### AWARDS

Leathercrafting gift cards are sponsored by Tandy Leather Company

Ribbons will be awarded through 5th place in each class.

**BEST OF SHOW, Youth** ..... Mini-Rosette & \$50

**BEST OF SHOW, Novice** ..... Mini-Rosette & \$50

**BEST OF SHOW, Advanced** ..... Mini-Rosette \$50

**BEST OF SHOW, Professional** ..... Mini-Rosette \$50

**GRAND CHAMPION OVERALL** ..... Rosette & \$50

## WOODTURNING

### Division 3518

Exhibitors may enter in only one area - Novice, Intermediate or Advanced. Items may not exceed 30" in any direction.

#### **NOVICE, 0-3 years experience**

01. Closed/hollow form (opening is 1/3 or less than the diameter of the piece)
02. Bowl
03. Platter
04. Writing instrument
05. Lidded container
06. Ornament
07. Segmented piece
08. Spindle piece (turning between centers)
09. Miscellaneous

#### **INTERMEDIATE, 3-6 years experience**

10. Closed/hollow form (opening is 1/3 or less than the diameter of the piece)
11. Bowl
12. Platter
13. Writing instrument

#### **(INTERMEDIATE continued)**

14. Lidded container
15. Ornament
16. Segmented piece
17. Spindle piece (turning between centers)
18. Miscellaneous

#### **ADVANCED, More than 6 years experience**

19. Closed/hollow form (opening is 1/3 or less than the diameter of the piece)
20. Bowl
21. Platter
22. Writing instrument
23. Lidded container
24. Ornament
25. Segmented piece
26. Spindle piece (turning between centers)
27. Miscellaneous

#### **AWARDS**

Ribbons will be awarded through 10th place in each class.

**BEST OF SHOW, Novice ..... Rosette & \$25**

**BEST OF SHOW, Intermediate..... Rosette & \$25**

**BEST OF SHOW, Advanced ..... Rosette & \$25**

## BEADWORK

### Division 3519

01. Jewelry
02. Clothes & purses
03. Miscellaneous

#### **AWARDS**

Ribbons will be awarded through 10th place in each class.

**BEST OF SHOW ..... Rosette & \$50**

# POLYMER CLAY CREATIONS

## Division 3520

All entries must be handcrafted by the exhibitor.

The primary decorative elements of all entries, except those in the mixed media class, must be at least 60% polymer clay. Items used to support the polymer clay are not included in the 60% requirement.

### Judging Criteria:

Workmanship	30%
Creativity	30%
Appearance	40%

01. Sculpture

02. Jewelry and accessories

03. Beads and buttons

04. Household and functional

05. Mixed media with polymer clay

06. Bottles of Hope (The Central OK. Polymer Clay Guild makes & donates Bottles of Hope to cancer patients through local cancer support orgs. These are small glass bottles decoratively covered with polymer clay & filled with hope for health.)

### AWARDS

Ribbons will be awarded through 10th place in each class.

**1st Place in Each Class..... Ribbon & \$5**

**BEST OF SHOW..... Rosette & \$25**

# BASKETWEAVING

## Division 3521

Open to all basket weavers including amateurs and professionals. Exhibitors may enter up to 2 items per class.

### Judging Criteria:

#### Craftsmanship

40%

(Overall technique, Finishing, Attention to detail,  
Joining of rims & edges, Sits evenly, Etc.)

#### Degree of difficulty

20%

(Materials, Style, & technique used in relation to execution)

- 01. Traditional
- 02. Ribbed
- 03. Twill variation
- 04. Coiled

#### Design

20%

(Proportion, Balance, Line, Use of Color, Individuality,  
originality, or interpretation of a traditional style)

#### Presentation

20%

(Choice & use of material, Use of embellishments,  
Overall appearance, Judges discretion)

- 05. Non-traditional
- 06. Non-wood
- 07. Gathered materials
- 08. Holiday

### AWARDS

Premiums provided by Basket Weavers Guild of Oklahoma  
Ribbons will be awarded through 5th place in each class.

**1st Place in Each Class..... Ribbon & \$10**

**BEST OF SHOW..... Rosette & \$25**

### CLASS DEFINITIONS

#### TRADITIONAL

**Traditional** – Traditional baskets are woven from reed or cane in an over 1 under 1 construction and are used to carry or hold something.

**Ribbed** – Ribbed baskets have spokes of round or oval material that extend from one side to the other and are tucked into a God's Eye, or other appropriate design, on either side of the basket. They can be woven on hoops or rings that are held in place by this design. They were used for gathering eggs, melons and potatoes.

**Twill Variations** – Twill weave is sometimes called herringbone weave. The spokes are flush against each other rather than spread apart as in traditional weaving. The basic weave is over and under a repeating number of spokes, forming a pattern or design. There are many variations that make designs such as a diamond, arrow or "X".

**Coiled** – A coiled basket is sewn together with such things as waxed linen, sinew, raffia or fabric. Typically, coiled baskets are made of fabric, pine needles or native grasses that are wound, tied or sewn in rows around the basket.

#### NON-TRADITIONAL

**Non-Traditional** – These baskets have unusual designs or are made of materials not usually associated with traditional basketry. Some examples of these materials are paper, ribbon, plastic strips, wire and yarn.

**Non-Wood** – Non-wood baskets can be woven from anything other than wood, such as gourds, pine needles, feathers, beads, agate, bones, antlers, waxed linen, string and wire.

**Gathered Materials** – These baskets are made of things gathered from nature such as grapevine, honeysuckle, kudzu, grasses, bark and willow. They can be different shapes and can be woven many ways.

**Holiday** – Can be woven with any material, in any configuration but has to have an obvious holiday theme. Any traditional American holiday is accepted.

# DEVELOPMENTALLY DISABLED CRAFTS

## Division 3522

The Oklahoma State Fair Creative Arts program is designed to highlight and encourage artists of all abilities. As such, we acknowledge and are inclusive of all types of special needs exhibitors. Intellectual and developmental disabilities as defined by Oklahoma Human Services (<https://oklahoma.gov/okdhs/services/dds/faq.html>)

### **According to the Developmental Disabilities Act (Pub.L.106-402), the term developmental disability means a severe, chronic disability that:**

Is attributable to a mental or physical impairment or a combination of those impairment that occurs before the individual reaches age 22 and is to likely to continue indefinitely.

Results in substantial functional limitations in three or more of the following areas of major life activity: self care, receptive and expressive language, learning, mobility, self-direction, capacity for independent living, and economic self-sufficiency. This reflects the individual's need for a combination and sequence of special, interdisciplinary, or generic services, individualized supports, or other forms of assistance that are of lifelong or extended duration and are individually planned and coordinated.

The term "developmental disability" can include several types of conditions including, but not limited to: Autism, Down syndrome, Asperger's syndrome, cerebral palsy, and epilepsy. Many states use different definitions for developmental disabilities based on the federal law. Oklahoma uses the federal definition and also adds that a person must have a primary diagnosis of intellectual disabilities to be qualified for developmental disabilities services.

### **Intellectual Disabilities as defined by the American Association on Intellectual and Developmental Disabilities (AAIDD 2024):**

A person with significant limitations in intellectual functioning, which means a full scale IQ standard score of approximately 2 (or more) standard deviations below the mean as measured with an appropriately-normed, standardized test of intelligence. A person with significant limitations in adaptive behavior, which means a standard score of approximately 2 (or more) standard deviations below the mean measured with an appropriate and standardized test of adaptive behavior in one or more of the following domains: conceptual, social, or practical skills.

Onset of both of the above limitations during the developmental period, which means that significant limitations in both intellectual functioning and adaptive behavior in the individual have manifested before the age of 22.

Exhibitors may enter up to 2 items per class.

### **Items may not exceed 30" in any direction.**

- |                                   |   |
|-----------------------------------|---|
| 01. Recycled craft item           | 06. Painting                                |
| 02. Craft made from kit - textile | 07. Drawing (pen, pencil, crayon, charcoal) |
| 03. Craft made from kit - other   | 08. Clothing item                           |
| 04. Wood item                     | 09. Miscellaneous                           |
| 05. Clay pot craft                |   |

### **AWARDS**

Ribbons will be awarded through 10th place in each class.

**BEST OF SHOW..... Rosette & \$25**



# MAJOR NEUROCOGNITIVE CRAFTS

## Division 3523

The Oklahoma State Fair Creative Arts program is designed to highlight and encourage artists of all abilities. As such, we acknowledge and are inclusive of all types of exhibitors. This contest is for those with Major Neurocognitive Disorder.

Major Neurocognitive Disorder is defined as a significant decline in at least one of the domains of cognition which include executive function, complex attention, language, learning, memory, perceptual-motor, or social cognition, and loss of ability to do daily tasks.

The decline represents a change from a patient's prior level of cognitive ability, is persistent and progressive over time, and is not associated exclusively with an episode of delirium.

Generally, manifests at 55, but early on-set could be sooner.

### **Some examples of these major neurocognitive disorders are:**

Alzheimer disease	Multiple sclerosis
Creutzfeldt-Jakob disease	Normal pressure hydrocephalus
Dementia	Parkinson disease
Diffuse Lewy body disease	Pick disease
Huntington disease	

Exhibitors may enter up to 2 items per class.

### **Items may not exceed 30" in any direction.**

01. Coloring	06. Wood item
02. Drawing	07. Item made from a kit
03. Painting (acrylic, watercolor, etc.)	08. Mixed Mediums
04. Collage	09. Miscellaneous
05. Clothing item	

### **AWARDS**

Ribbons will be awarded through 10th place in each class.

**BEST OF SHOW.....Rosette & \$25**



## FROM THE BEEHIVE: BEESWAX & CUT COMB CONTEST Division 3524

Join the Oklahoma State Beekeepers in exploring items that come from the Beehive - Beeswax & Cut Comb.

Exhibitors must register for these contests. They will be emailed with information on date/time/location of judging. the top 5 in each class will be brought to the Oklahoma State Fair to be displayed.

### CUT COMB:

Cut Comb is honey comb that has been cut from the frame.

This contest will be judged on the comb in a 4" x 4" transparent box. The chunk of comb must be in one piece. Foundation should be a thin surplus.

Cut Comb will be judged on completeness of capping's, cleanliness and clarity of honey, no leaking of honey from comb. Absence of pollen, brood and granulation and aroma.

### BEESWAX:

Blocks of Beeswax are made from 100% pure beeswax. It is perfect for making lip balms, candles, crafts, wood working, etc.

Beeswax will be judged on color, cleanliness, uniformity, freedom from cracks, shrinkage, bruising, texture and aroma.

Blocks of beeswax need to be formed in forms provided by OSBA prior to check-in, after registration. Molds must be returned.

- 01. Cut Comb
- 02. Beeswax

### AWARDS

Ribbons will be awarded through 5th place in each class.

**1st Place (Each Class) ..... Rosette & \$15**  
**2nd Place (Each Class) ..... Ribbon & \$10**  
**3rd Place (Each Class) ..... Ribbon & \$5**

# FANCY FEET CONTEST

## Division 3525

**Monday, September 16, 2024**

**Check-in:** 5 - 5:45 p.m. (NO LATE CHECK-INS)

**Judging Begins:** 6 p.m.

**Location:** Creative Arts Building - Lower Bay

Show off your creativity by decorating one shoe to be judged and see if you have what it takes to win 'Best of Shoe'! Decorate your single shoe with glitter, paint, handmade or purchased items. Please leave the perishable items at home! All shoes will be on display for the remainder of the Fair. Items may not exceed 30" in any direction.

### Judging Criteria:

Workmanship	30%
Creativity	30%
General Appearance	40%

01. Boots

02. High heeled shoes

03. House shoes/slippers

04. Tennis shoes

### AWARDS

Ribbons will be awarded through 10th place in each class.

**BEST OF SHOE** ..... Rosette & \$75

**1st Place (Each Class)** ..... Ribbon & \$50

**2nd Place (Each Class)** ..... Ribbon & \$25

**3rd Place (Each Class)** ..... Ribbon & \$15

# VOICE OF THE FAIR:

## POETRY CONTEST

### Division 3526

**Friday, September 13, 2024**

**Check-in:** 6:15 - 6:45 p.m. (NO LATE CHECK-INS)

**Judging Begins:** 7 p.m.

**Location:** Arts Annex

Anyone age 14 and older is welcome to enter. Registration will be limited to the first 30 entrants. A printed copy of the poem must be submitted at check-in. The Oklahoma State Fair retains the right to publish portions of the poems for promotional purposes. Poems may be up to 2 minutes in length. The performer will be warned at 1:50 and stopped at 2 minutes. Subject matter must be G-rated with no profanity. The style may be of a rhyming or non-rhyming scheme. Order of appearance will be done through a random draw prior to competition. Audience Favorite ballots will be distributed prior to the first contestant in each class. Those voting must be present for the entire contest.

### AWARDS

Ribbons will be awarded through 10th place

**BEST OF SHOW** ..... Rosette & \$100

**People's Choice** ..... Rosette & \$50

**Most Inspirational** ..... Rosette & \$25

**Most Entertaining** ..... Rosette & \$25

# TABLE DECORATING CONTEST

## Division 3527

**Wednesday, September 11, 2024**

**Check-in:** 5:15 - 5:45 p.m. (NO LATE CHECK-INS)

**Table Decorating:** 5:45 - 6:30 p.m.

**Judging Begins:** 6:30 p.m.

**Location:** Creative Arts Building - Upper Bay  
(Please enter through west doors)



CONVENTIONS & MORE

OKLAHOMA CITY

### 2024 Table Decorating Contest Theme: HELPFUL HEROES

#### Contest requirements:

Create a tablescape with ONE place setting on a 30" round table. The design should be set for a party for your favorite hero, may that be a first responder, a teacher, a superhero, or an important person in your life, like you parent or someone important! Decorations may incorporate centerpieces, decorative items, etc. Skillful hand craftsmanship of any element of the table setting will be given consideration in judging. Decorations may be real or artificial, but they must hold up for the entire display time. Table decorations should incorporate some aspect of the theme.

- Table decorating is limited to tabletop only – props will not be allowed on the floor
- Each table setting must include a menu on a 5 x 7 card and no more than one place setting
- Table coverings should reach to floor. (Table height is 30") A standard 90" tablecloth is appropriate.

#### PLEASE NOTE: THIS CONTEST TAKES PLACE PRIOR TO THE FAIR!

Set-up and judging for Table Decorating contest will be held on Wednesday, September 11, 2024. Tables will be on display in the Upper Bay of the Creative Arts Building for the **ENTIRE RUN OF THE FAIR!** All participants (or guardians) will be asked at check-in if they would like to collect their items Sunday, September 22 between 8 and 9 p.m., or Monday, September 23 during reclaim. ITEMS MUST BE PICKEDUP BY MONDAY or items will become the property of the State Fair. Participants who plan to pick up items Sunday will be put on a list for date of pick up. If someone else is breaking down your exhibit, please be sure they have a signed note from you.

#### Judging Criteria:

Visual Appeal - Tables are judged on creativity and theme continuity.

Menu - Menu should be balanced and reflect the theme of our party.

Setting and Proper Placement - Place setting should have proper placement and spacing of dining pieces needed for all listed menu items placed in their proper location, not including the serving plates and bowls.

### AWARDS

Ribbons will be awarded through 10th place

**1st Place** ..... Rosette & \$100

**2nd Place** ..... Ribbon & \$50

**3rd Place** ..... Ribbon & \$25

# BEST DRESSED PUMPKIN CONTEST

## Division 3528

**Thursday, September 12, 2024**

**Check-in:** 3:30 - 4 p.m. (NO LATE CHECK-INS)

**Judging Begins:** 4:30 p.m.

**Location:** Creative Arts Building - Lower Bay

Contestants are asked to decorate/carve ARTIFICIAL pumpkins for this event. Real pumpkins WILL NOT be accepted. One entry per contestant. Pumpkins will remain on display for the remainder of the Fair. Participants may pick up their entries per the release instructions in the Creative Arts Calendar of Events.

Pumpkins can be dressed or decorated as storybook characters (Cinderella, Humpty Dumpty, Harry Potter, etc.), real characters (police officer, firefighter, nurse, etc.) or traditional Halloween characters (witch, scarecrow, Dracula, etc.). Pumpkins will be judged on originality, decorations, creativity, and craftsmanship.

### AWARDS

Ribbons will be awarded through 10th place

**1st Place** ..... Rosette & \$25

**2nd Place** ..... \$15

**3rd Place** ..... \$5

**People's Choice** ..... Rosette & \$30

# BREAST CANCER AWARENESS: BEAUTIFUL BRAS!

## Division 3529

**Thursday, September 12, 2024**

**Check-in:** 6 - 6:30 p.m. (NO LATE CHECK-INS)

**Judging Begins:** 6:30 p.m.

**Location:** Creative Arts Building - Lower Bay

Breast cancer is one of the most common cancers in women in the United States. According to the American Cancer Society, an estimated 192,370 new cases of invasive breast cancer are expected to be diagnosed this year. Today, there are more than 2.5 million breast cancer survivors living in the United States. Help support breast cancer awareness by making a bra beautiful! Bras will be judged on originality, decorations, creativity and craftsmanship. Items may not exceed 30" in any direction.

### AWARDS

Ribbons will be awarded through 10th place

**1st Place** ..... Rosette & \$75

**2nd Place** ..... Ribbon & \$50

**3rd Place** ..... Ribbon & \$25

**4th Place** ..... Ribbon & \$15

**5th Place** ..... Ribbon & \$10

# LIVE SCRAPBOOK CHALLENGE: BABY ANNOUNCEMENT Division 3530

**Saturday, September 14, 2024**

**Check-in:** 10 - 10:30 a.m. (NO LATE CHECK-INS)

**Judging Begins:** Noon

**Location:** Creative Arts Building - Lower Bay

Each contestant will be given a packet of supplies to create a greeting card announcing a new baby! Packets will be the same for each contestant. Design a card designed to incorporate your fun announcement. It can be for any occasion. Photos will not be needed. Entries will be judged on quality of craftsmanship, design, originality, creativity and journaling. Contestants may bring the following supplies to complete their project (no other supplies will be allowed):

Paper trimmer

Adhesive (any type)

Scissors (any type)

Pen (any color)

Distressing ink (any color)

## AWARDS

Ribbons will be awarded through 10th place

**1st Place ..... Mini-Rosette & \$50**

**2nd Place ..... Ribbon & \$35**

**3rd Place ..... Ribbon & \$25**

**4th Place ..... Ribbon & \$15**

**5th Place ..... Ribbon & \$10**



# OKLAHOMA MURAL CHALLENGE

Sponsored by OKC Outlets

Division 3532

**Saturday, September 14, 2024**

**Check-in:** 8:30 - 9 a.m. (NO LATE CHECK-INS)

**Judging Begins:** 9 a.m.

**Location:** General Pershing Boulevard Median



The Oklahoma Mural Challenge returns to the 2024 Oklahoma State Fair. The General Pershing Boulevard Median will become a visual wonderland on Saturday, September 14, during the opening weekend of the Oklahoma State Fair.

Artists will be selected to create their visions on 12' x 8' panels, as Fairgoers watch. Through a juried process of submitted portfolios, 21 artists will be selected to participate. Following the allotted live paint time, a judging panel will award \$2,100 in cash premiums to the top creations. All 20 murals will remain on display through the closing date of the Fair, September 22. Following the Fair, the top three (3) pieces will be relocated and placed on display at the OKC Outlets.

After you register online, you will receive an email explaining how to submit a portfolio of 3-5 pieces of large-scale painting for consideration. The 21 accepted artists will receive a \$100 stipend for supplies in addition to the prize money for the top three (3) murals.

Teams of two will be allowed to compete. Submissions will work the same as an individual muralist with a team captain designated to be the point of contact. One stipended will be split by team, and if a team places, one check will be presented and will be split afterwards by team.

## AWARDS

Premiums provided by OKC Outlets

<b>1st Place</b> .....	<b>Rosette &amp; \$1,000</b>
<b>2nd Place</b> .....	<b>Rosette &amp; \$750</b>
<b>3rd Place</b> .....	<b>Rosette &amp; \$250</b>
<b>People's Choice</b> .....	<b>Rosette &amp; \$100</b>

