

OKLAHOMA STATE FAIR

LIVESTOCK SHOW

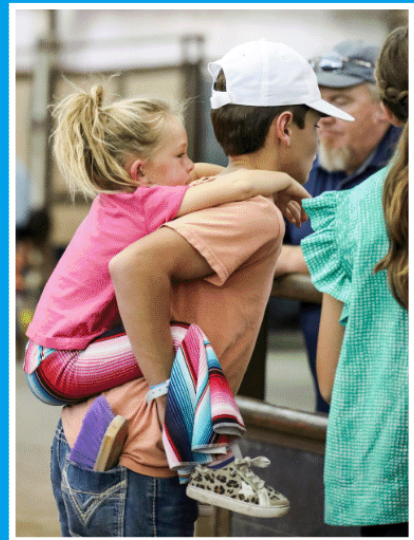
POW!



**JOIN US
SEPTEMBER
12-22,
2024!**



THE OKLAHOMA STATE FAIR WAS THE PLACE TO BE IN '23!



FINAL DRIVE PHOTOGRAPHY

is the official photographer of the
Oklahoma State Fair Livestock &
Equine Shows.

www.finaldrivephotography.com

ABOUT US

MISSION

OKLAHOMA STATE FAIR, INC IS A 501(C)(3) NOT-FOR-PROFIT CORPORATION THAT SERVES THE PEOPLE OF OKLAHOMA AND IS DEDICATED TO CONTINUING THE ORGANIZATION'S HERITAGE OF EDUCATION, ENTERTAINMENT, AND ECONOMIC DEVELOPMENT THROUGH THE OPERATION OF THE OKC FAIRGROUNDS AND THE ANNUAL OKLAHOMA STATE FAIR.

HISTORY

OCTOBER 5, 1907, WAS A HISTORIC DAY IN THE YOUNG LIFE OF THE FRONTIER TOWN OF OKLAHOMA CITY. ALL ATTENTION THAT DAY WAS FOCUSED ON THE OPENING CEREMONY OF A NEW INSTITUTION LOCATED A MILE EAST OF DOWNTOWN - THE OKLAHOMA STATE FAIR. FROM THOSE HUMBLE BEGINNINGS IN 1907, THE OKLAHOMA STATE FAIR HAS GROWN TO BECOME ONE OF THE PREMIER STATE FAIRS IN THE NATION. WE ARE PROUD THAT OUR FAMILY EVENT HAS BEEN A PART OF THE OKLAHOMA LANDSCAPE FOR MORE THAN 100 YEARS - WE ARE LOOKING FORWARD TO AMUSING AND ENTERTAINING FAIRGOERS FOR MANY MORE.

CONTACT INFORMATION

MATTEA DANN - AGRIBUSINESS

MDANN@OKSTATEFAIR.COM

(405) 948-6768

FAX: (405) 948-4129



EYO GENERAL INQUIRIES

EYO@OKSTATEFAIR.COM

(405) 235-0404

KASS NEWELL - OYE EXECUTIVE VICE PRESIDENT

KASS@OKYOUTHEXPO.ORG

(405) 252-1219



JACOB SANDERSON - OYE DIRECTOR OF LIVESTOCK

JACOB@OKYOUTHEXPO.ORG

(405) 252-0184

SHOW INFORMATION

FEED & BEDDING OFFICE

CALL FOR CURRENT PRICES AND
DELIVERY OPTIONS TO YOUR STALL SPACE.

OFFICE PHONE
(405) 948-6786

OFFICE LOCATION
WEST OF BARN 7/SOUTH OF GATE 7
ENTRANCE

GATE 7 HOURS

SEPTEMBER 11, 2024
8 A.M. - NOON (TACK ONLY)
NOON - 10:00 P.M.

SEPTEMBER 12-22, 2024
6:30 A.M. - 10:00 P.M.

SHOW OFFICE

OFFICE HOURS
SEPTEMBER 11-22, 2024
7:30 A.M. - 7:30 P.M.

OFFICE LOCATION
SOUTH SIDE OF SUPERBARN/
NORTH OF JIM NORICK
ARENA

MAILING ADDRESS

OKLAHOMA STATE FAIR
ATTN: LIVESTOCK SHOW
3001 GENERAL PERSHING BLVD
OKLAHOMA CITY, OK 73107



SHOW UPDATES

NEW SHOWS/CHANGES

Look for yellow highlighted text throughout this guide to find out what is new in 2024!



EYO MANAGED EVENTS

When you see this logo, this event/show is managed by OYE staff. Contact directly for information.

OSF MANAGED EVENTS

When you see this logo, this event/show is managed by OSF AgriBusiness Department staff. Contact directly for information.





GOAT GUIDE CONTENTS

(Click on the title or page number below to jump to that page.)

GOAT GUIDE CONTENTS..... 7

LIVESTOCK SHOW SCHEDULE..... 8

WEEK 1 LIVESTOCK ARRIVAL / CHECK-IN SCHEDULE..... 11

WEEK 2 LIVESTOCK ARRIVAL / CHECK-IN SCHEDULE..... 12

PARTICIPANT GENERAL RULES & INFORMATION..... 13

LIVESTOCK SHOW RULES & REGULATIONS..... 15

 EXHIBITOR SHOW ELIGIBILITY..... 15

 ENTRY INFORMATION & RULES..... 16

 LIVESTOCK SHOW FEES..... 20

 EXHIBITOR ADMISSION INFORMATION..... 22

 AG TEACHER/LEADER ADMISSION..... 23

 ANIMAL WELFARE POLICY..... 24

 HEALTH & SANITARY REGULATIONS..... 28

 SHOW RING CODE OF ETHICS..... 30

JUNIOR & OPEN GOAT SHOW GUIDES..... 31

 JUNIOR/YOUTH GOAT SHOWMANSHIP DIVISIONS..... 32

 JUNIOR MARKET WETHERS (DIVISION 1300)..... 34

 JUNIOR MARKET WETHER DAMS (DIVISION 1301)..... 36

 JUNIOR PROSPECT DOES (DIVISION 1303)..... 38

 OPEN ABGA BOER GOATS (DIVISIONS 1502 - 1505)..... 40

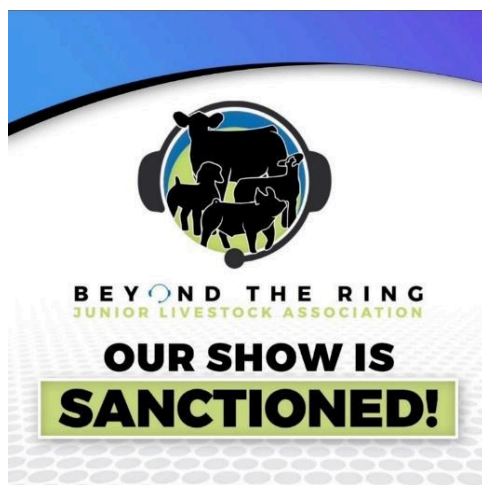
 OPEN COMMERCIAL BREEDING DOES (DIVISION 1500)..... 43

 YOUTH DAIRY GOATS (DIVISIONS 1520 - 1539)..... 45

 OPEN DAIRY GOATS (DIVISIONS 1540 - 1558)..... 48

 OPEN MINI SILKY GOAT SHOWS (DIVISIONS 1553 – 1560)..... 51

 OPEN PYGMY GOATS (DIVISIONS 1507 - 1510)..... 54





LIVESTOCK SHOW SCHEDULE

WEEK 1

NEW COMPETITION/EVENT/DAY OR TIME

Wednesday, September 11		
8 a.m.	EYO Early Tack Move-In	
Noon	EYO Livestock Arrival Begins	
Thursday, September 12		
9 a.m.	Alfalfa Hay Show Judging	OEH 3
3:30 – 5 p.m.	Angus, British White & Simmental Check-In & In Place	Cattle Office
4 p.m.	Junior Beef Showmanship	Performance Arena
6 p.m.	Old Timers' Showmanship	Performance Arena
7 p.m.	CARDS DUE & IN PLACE: Commercial Heifers & Junior Steers	Self-Check-In
Friday, September 13		
8 a.m.	Junior Angus Show Junior Simmental Show Junior Simmental Influence Show Junior Steer Show	Performance Arena (Ring A)
8 a.m.	Open British White Show Open Angus Show Open Simmental Show Open Simmental Influence Show Junior Commercial Heifer Show	Performance Arena (Ring B)
10 a.m. - 12 p.m.	Goat Skillathon	Barn 3 Auditorium
11 a.m. – 1 p.m.	Market Sheep Classification	Barn 1 Arena (Ring A)
12 p.m. - 2 p.m.	Beef Skillathon	Barn 3 Auditorium
1 p.m.	ALL EYO LIVESTOCK IN PLACE	
1 p.m.	AOB & Brahman Check-In	Cattle Office
1:15 – 1:45 p.m.	Junior Breeding Sheep Check-In	Sheep Office
2 p.m.	Charolais & Brangus Check-In	Cattle Office
2 p.m.	Junior Sheep Showmanship	Barn 1 Arena (Ring A)
2 p.m.	Junior Market & Prospect Goat Showmanship	Barn 1 Arena (Ring B)
3 p.m.	Junior Swine Showmanship Junior Purebred Hampshire Barrow Show Junior Purebred Yorkshire Barrow Show	Barn 8 Arena
3 p.m.	Chianina, Mini-Hereford, & Santa Gertrudis Check-In	Cattle Office
3 p.m.	CARDS DUE: Market Goats, Wether Dams, Market Barrows, Commercial Gilts	Self-Check-In
3 – 4 p.m.	CARDS DUE & REGISTRATION CHECK: Breeding Gilts	Swine Office
4 p.m.	Hereford, Limousin, Maine-Anjou, & MaineTainer Check-In	Cattle Office
5 p.m.	Red Angus & Shorthorn Check-In	Cattle Office



WEEK 1 (continued)
NEW COMPETITION/EVENT/DAY OR TIME

Saturday, September 14		
8 a.m.	Junior AOB Show Junior Brahman Show Junior Brangus Show Junior Chianina Show Junior Mini-Hereford Show <i>(Pre-Juniors included)</i> Junior Santa Gertrudis Show Junior Charolais Show Junior Charolais Composite Show	Performance Arena (Ring A)
Immediately following Junior AOB Show	Open AOB Show Open Brahman Show Open Brangus Show Open Chianina Show Open Mini-Hereford Show Open Santa Gertrudis Show Open Charolais Show Open Charolais Composite Show	Performance Arena (Ring B)
9 a.m.	Junior Market Wether Lamb Show	Barn 1 Arena (Ring A)
9 a.m.	Junior Market Wether Goat Show	Barn 1 Arena (Ring B)
9 a.m.	Junior Market Barrow Show Youth Commercial Gilt Show	Barn 8 Arena
11 a.m.	Open Giant Pumpkin Competition Weigh-Off	Barn 3 Auditorium
1 p.m.	Junior Wether Dam Goat Show	Barn 1 (Ring B)
3 p.m.	CARDS DUE: Prospect Does	Self-Check-In
5 - 7 p.m.	Farmhand Olympics <i>presented by Oklahoma Farm Bureau</i>	Barn 1 Arena
Sunday, September 15		
8 a.m.	Junior Hereford Show Junior Maine-Anjou Show Junior MaineTainer Show Junior Red Angus Show Junior Percentage Red Angus Show Junior Shorthorn Show Junior Shorthorn Plus Show Junior Limousin Show	Performance Arena (Ring A)
Immediately following Junior Hereford Show	Open Hereford Show Open Maine-Anjou Show Open MaineTainer Show Open Red Angus Show Open Shorthorn Show Open Shorthorn Plus Show	Performance Arena (Ring B)
9 a.m.	Junior Market Ewe Show Junior Breeding Sheep Show	Barn 1 Arena (Ring A)
9 a.m.	Junior Prospect Doe Show	Barn 1 Arena (Ring B)
9 a.m.	Youth Breeding Gilt Show	Barn 8 Arena
9 a.m.	Youth Extemporaneous Speech Competition	Barn 3 Auditorium
4 p.m.	Supreme Cattle Drive	Performance Arena



WEEK 1 (continued)
NEW COMPETITION/EVENT/DAY OR TIME

Monday, September 16		
9 a.m.	Open Pygmy Goats - Shows A & B	Barn 1 Arena (Ring A)
9 a.m.	4-H/FFA Dairy Cattle Judging Contest Registration	Performance Arena (Grandstand)
10 a.m.	4-H/FFA Dairy Cattle Judging Contest	Performance Arena
10 a.m.	Open Breeding Sheep Show Regional Natural Colored Wool Growers Sheep & Fleece Show	Barn 1 Arena (Ring B)
5 p.m.	Junior Dairy Cattle Showmanship	Performance Arena
6 p.m.	Goat Milking Experience	Barn 1 Arena
Tuesday, September 17		
8:30 a.m.	Youth Dairy Goat Showmanship Youth & Open Dairy Goats (Jr. Goats)	Barn 1 Arena
9 a.m.	Junior & Open Dairy Cattle Shows	Performance Arena

WEEK 2
NEW COMPETITION/EVENT/DAY OR TIME

Wednesday, September 18		
8:30 a.m.	Youth & Open Dairy Goats (Sr. Goats)	Barn 1 Arena
Thursday, September 19		
9 a.m.	4-H/FFA Livestock Judging Contest Registration	Performance Arena (Grandstand)
10 a.m.	4-H/FFA Livestock Judging Contest	Barn 8 Arena
Friday, September 20		
5 p.m.	Youth Poultry Showmanship	Barn 3 Auditorium
7 p.m.	Open Mini Silky Goat Showmanship	Barn 1 Arena
Saturday, September 21		
8 a.m.	Open Commercial Boer Goats Open ABGA Boer Goats – Day 1	Barn 1 Arena
9 a.m.	Open Mini Silky Goats - Shows A/B/C	Barn 1 Arena
10 a.m.	Open Llama and Alpaca Show	Barn 8 Arena
10 a.m.	Open Poultry Show A	Barn 4
2 p.m.	Open Mini Silky Goats - Shows D/E/F	Barn 1 Arena
7 p.m. (or 1 hour after last class)	Open Llama and Alpaca Show – Costume Contest Classes	Barn 8 Arena
Sunday, September 22		
9 a.m.	Open ABGA Boer Goats – Day 2	Barn 1 Arena
10 a.m.	Open Mini Silky Goats - Shows G & H	Barn 1 Arena
10 a.m.	Open Llama and Alpaca Show	Barn 8 Arena
10 a.m.	Open Poultry Show B	Barn 4



WEEK 1 LIVESTOCK ARRIVAL / CHECK-IN SCHEDULE

More detailed information can be obtained by checking each show's competition guide.

REMINDER:

Gate 7 Hours: September 11: 8 a.m. (TACK ARRIVAL ONLY)
 September 11: Noon – 10 p.m.
 September 12 – 22: 6:30 a.m. – 10 p.m.

Livestock Show

Office Hours: September 11 – 22: 7:30 a.m. – 7:30 p.m.



Breed	Barn	Earliest Date & Time in Barn	In Place By	Check In Time
Angus	B-4	9/11 @ Noon	9/12 @ 5 p.m.	9/12 from 3:30 - 5 p.m.
AOB Beef	B-4	9/11 @ Noon	9/13 @ 1 p.m.	9/13 @ 1 p.m.
Brahman	B-4	9/11 @ Noon	9/13 @ 1 p.m.	9/13 @ 1 p.m.
Brangus	B-4	9/11 @ Noon	9/13 @ 1 p.m.	9/13 @ 2 p.m.
Breeding Gilts	B-8/9	9/11 @ Noon	9/13 @ 1 p.m.	9/13 from 3 – 4 p.m.
Breeding Sheep (Jr)	B-1	9/11 @ Noon	9/13 @ 1 p.m.	9/13 from 1:15 – 1:45 p.m.
British White	B-4	9/11 @ Noon	9/13 @ 1 p.m.	9/13 @ 2 p.m.
Charolais & Composites	B-4	9/11 @ Noon	9/13 @ 1 p.m.	9/13 @ 2 p.m.
Chianina	B-4	9/11 @ Noon	9/13 @ 1 p.m.	9/13 @ 3 p.m.
Commercial Gilts	B-8/9	9/11 @ Noon	9/13 @ 1 p.m.	9/13 by 3 p.m. (self-check-in)
Commercial Heifers	B-4	9/11 @ Noon	9/12 @ 7 p.m.	9/12 by 7 p.m. (self-check-in)
Hereford	B-4	9/11 @ Noon	9/13 @ 1 p.m.	9/13 @ 4 p.m.
Maines (Anjou&Tainer)	B-4	9/11 @ Noon	9/13 @ 1 p.m.	9/13 @ 4 p.m.
Market Barrows	B-8/9	9/11 @ Noon	9/13 @ 1 p.m.	9/13 by 3 p.m. (self-check-in)
Market Ewes	B-1	9/11 @ Noon	9/13 @ 1 p.m.	9/13 from 11 a.m. – 1 p.m. weigh in
Market Wether Sheep	B-1	9/11 @ Noon	9/13 @ 1 p.m.	9/13 from 11 a.m. – 1 p.m. weigh in
Market Wether/Wether Dam Goats	B-1	9/11 @ Noon	9/13 @ 1 p.m.	9/13 by 3 p.m. (self-check-in)
Mini Herefords	B-4	9/11 @ Noon	9/13 @ 1 p.m.	9/13 @ 3 p.m.
Prospect Does	B-1	9/11 @ Noon	9/13 @ 1 p.m.	9/14 by 3 p.m. (self-check-in)
Junior Steers	B-4	9/11 @ Noon	9/12 @ 7 p.m.	9/12 by 7 p.m. (self-check-in)
Red Angus	B-4	9/11 @ Noon	9/13 @ 1 p.m.	9/13 @ 5 p.m.
Simmental & Influence	B-4	9/11 @ Noon	9/12 @ 5 p.m.	9/12 from 3:30 - 5 p.m.
Santa Gertrudis	B-4	9/11 @ noon	9/13 @ 1 p.m.	9/13 @ 3 p.m.
Shorthorns	B-4	9/11 @ Noon	9/13 @ 1 p.m.	9/13 @ 5 p.m.
Alfalfa Hay Show	OEH3	9/11 @ 10 a.m.	9/11 @ 3 p.m.	9/11 by 3 p.m.
Giant Pumpkin Weigh-Off	B3A	9/13 @ 6 p.m.	9/14 @ 9 a.m.	Upon arrival
Youth Extemporaneous Public Speaking	B3A	9/15 @ 8 a.m.	5 min. before speech time	Upon arrival



ALL ANIMALS ARE RELEASED AFTER THE BREED SHOW/COMPETITION IS COMPLETE.
THERE WILL BE NO RELEASE CARDS IN 2024.



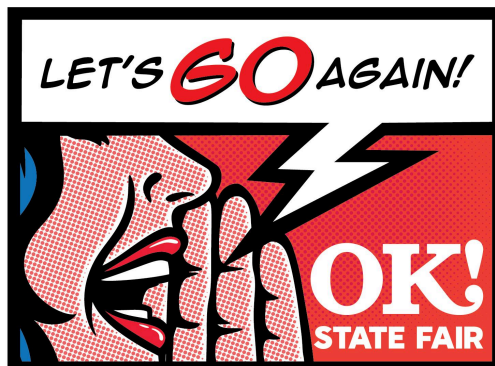
WEEK 2 LIVESTOCK ARRIVAL / CHECK-IN SCHEDULE

More detailed information can be obtained by checking each show's competition guide.

REMINDER:

Gate 7 Hours: September 12 – 22: 6:30 a.m. – 10 p.m.

Livestock Show Office Hours: September 11 – 22: 7:30 a.m. – 7:30 p.m.



Breed	Barn	Earliest Date & Time in Barn	In Place By	Check In Time
Boer Goats & Commercial Does (Open)	B-1	9/19 @ 6 p.m.	9/20 @ 4 p.m.	9/20 from 1 – 6 p.m.
Breeding Sheep (Open)	B-1	9/14 @ 9 a.m.	9/15 @ Noon	9/15 from 1 – 4 p.m.
Dairy Cattle	B-4	9/14 @ Noon	9/15 @ 5 p.m.	9/15 @ 5 p.m.
Dairy Goats	B-1	9/16 @ Noon	9/16 @ 6 p.m.	Upon arrival
Llamas/Alpacas	B-8	9/19 @ 2 p.m.	9/20 @ 10 p.m.	9/20 by 10 p.m.
Mini Silky Goats	B-1	9/19 @ Noon	9/20 @ 4 p.m.	9/20 from 4 – 5 p.m.
Natural Colored Wool Sheep	B-1	9/14 @ 9 a.m.	9/15 @ Noon	9/15 from 1 – 4 p.m.
Poultry	B-4	9/20 @ 8 a.m.	9/20 @ 2 p.m.	Upon arrival
Pygmy Goats	B-1	9/14 @ 8 a.m.	9/15 @ 9 p.m.	9/15 from 2 – 6 p.m. OR 9/16 from 8 – 8:30 a.m.

**ALL ANIMALS ARE RELEASED AFTER THE BREED SHOW/COMPETITION IS COMPLETE.
THERE WILL BE NO RELEASE CARDS IN 2024.**



PARTICIPANT GENERAL RULES & INFORMATION

ALL EXHIBITORS ARE RESPONSIBLE FOR BEING AWARE OF AND ADHERING TO ALL RULES. ENTRY IN ANY EVENT/SHOW/DIVISION CONSTITUTES AS YOUR AGREEMENT TO ABIDE BY ALL RULES/GUIDELINES AS PROVIDED HEREIN OR BY VERBAL INSTRUCTION/REQUEST MADE BY ANY OKLAHOMA STATE FAIR STAFF, OFFICIALS AND/OR SUPERINTENDENTS.

ADMINISTRATIVE RULES AND REGULATIONS

1. Oklahoma State Fair, Inc. (hereinafter referred to as OSF), through its authorized officials, reserves the final and absolute right to interpret and enforce its own rules and regulations, and to settle and determine all matters, questions and differences connected with or incidental to the Oklahoma State Fair (OSF).
2. OSF reserves the right to amend or add to these rules, as they deem necessary. In the event of a conflict regarding general or special rules, the latter will govern.
3. No dogs or other pets are permitted at OKCF, whether on a leash or not. Only bona fide service dogs, trained animals in scheduled acts, OSF competitions and police dogs are allowed. Violations could result in a \$50 fine, impounding of the animal and/or expulsion from the OSF.
4. OSF does not permit the use of balloon displays, inflatable decorations, public address systems, electronic amplifiers, gongs, bells, and other noisy instruments without prior approval. Distribution of helium-filled Mylar balloons is not allowed under any circumstances.
5. No person will be permitted to distribute or post advertising material, handbills, fliers, or heralds at OKCF without prior approval from the OSF administration, and then only within the designated space. OSF can demand the removal of any advertising matter it considers objectionable.
6. All space is owned and designated by OSF. Management reserves the right to reassign any space, stall or pen not occupied by the exhibitor on any specified date. No exhibitor will be allowed to sublet or sell any space, privilege, stall, or pen without written permission from the OSF. No exhibitor will be allowed to sell or trade entries with exhibitors not entered in the show.
7. Admission each day requires the display and verification of an outside gate admission ticket or armband purchase. Re-entry requires a hand stamp and the armband or ticket stub.
8. Failure to comply with these rules and regulations will cause forfeiture of premiums and privileges and be considered sufficient cause to bar said exhibitor from future participation at the OSF.
9. Firearms: Per Oklahoma State Statute Title 21, Section 1290.22 (D) 3, carrying a concealed or unconcealed firearm is prohibited at the OKC Fairgrounds during the Oklahoma State Fair. This restriction extends to any person, regardless of their professional licensing, occupation, or jurisdiction.
10. OSF reserves the right to eject or cause to be ejected from OKC Fairgrounds any person(s) it deems objectionable or in violation of any applicable laws, rules or regulations in its sole discretion.
11. Security screening measures and special policies are in effect. Anyone on property for any purpose is subject to and must comply with all posted measures and policies whether provided at entry points, on the OSF website, in any written materials or as verbally issued by OSF Management or designated security personnel. Measures and policies are subject to change without notice.
12. A youth admissions policy will be in effect. Youth under the age of 18 will be required to be accompanied by a responsible person at least 25 years of age or a parent or legal guardian. Youth in official, sanctioned OSF activities may be considered as accompanied by a teacher, chapter leader, extension agent, contest superintendent/official, producer/promoter or sponsor as applicable, regardless of age or familial relation. Youth in these activities should enter the specified gate as instructed to avoid confusion with public/attendee policies at the general admission gates. Youth may be asked to identify if they are involved in these sanctioned activities when away from activity locations; please be prepared to identify the specific activity if necessary to any security officials.

EXHIBITOR'S WAIVER AND RELEASE OF LIABILITY

By completing and submitting any/all entries into any OSF competition, all individuals associated with any contestant, exhibitor, owner, associate, assistant, guest and/or animal(s) hereby releases, discharges and agrees to indemnify Oklahoma State Fair, Inc., the City of Oklahoma City, and the City of Oklahoma City Public Property Authority (and all of their officers, directors, members, managers, agents, representatives and employees) ("Indemnified Parties") from



any and all losses or expenses of any kind, civil penalties, crimes, and causes of actions (including cost for defense, settlement and attorney fees) arising from or related to (1) death or bodily injury to any person, (2) destruction, damage, loss of theft of any property, (3) any violation of any law or (4) any other claim, cause of action, damage or expense, which results from or arises out of any act or failure to act, claim, demand or action arising from or by reason of personal injury that may occur to any associated individual(s) or animal(s) or properties entered or attending this Event being held at OKC Fairgrounds (OKCF), whether caused by the actual or passive negligence of the Releases, while aforementioned individual(s) are at OKCF and/or competing, observing, working in, or for any purposes participating at the Oklahoma State Fair. All associates as mentioned herein voluntarily agree to the release and waiver of liability and indemnity agreement as indicated by their submission of entries and their presence at the OKCF. All involved individuals are aware of and understand Oklahoma Statutes, Section 50 of Title 76 pertaining to the Oklahoma Livestock Liability Limitations Act. The person submitting these entries, therein agrees to accept authority to act as agent for actual and/or recorded owner(s) of any/all animal(s) being entered, if applicable, and, in doing so, indicates acceptance of all rules, regulations, liability limitations for all individuals so named as owner, trainer, agent, exhibitor, rider, handler, groom, guest and/or showman. The person submitting these entries accepts responsibility and verifies accuracy of all information provided herein.

This release and waiver shall be governed by and construed in accordance with the laws of the State of Oklahoma.

NON-LIABILITY TO EXHIBITORS AND PATRONS

1. All property of every character entered for competition, display or any other purpose, or brought to OKCF, by any person, shall be subject to the rules and regulations prescribed by OSF.
2. In no case, shall the OSF, its Board of Directors, officers, agents, representatives, servants, or employees be held responsible for any person coming to OKCF for damage, injury, death or disability by disease, theft, or any other cause.
3. OSF hereby refuses to assume any responsibility for the safety, as bailee or otherwise, of any property brought to OKCF.
4. If the property owners, or others interested in the property, desire protection against loss, damage or injury from fire, or any other cause, must make their own arrangements and pay for such insurance.

CLAIMS FOR INJURY

1. OSF expressly refuses to assume any liability for injuries to any patron coming to OKCF, and no claims for injury to any person or property shall ever be asserted, or suit initiated or maintained against OSF, its Board of Directors, officers, agents, representatives, servants or employees for said cause by any person having license or privilege to exhibit at OKCF or occupying any space thereon, and it is part of the consideration for such license or privilege that such claims for damage are specifically waived.
2. If any damage, loss or injury to person or property shall be caused by reason of negligence or willful act of any person, firm or corporation, other agent, representatives, servants, or employees having license or privilege to exhibit on OKCF property. OSF shall, in no manner, be responsible therefore, and in case to be subjected to any expense or liability, all persons causing same or liable therefore shall indemnify the OSF.

TRAFFIC/VEHICLE REGULATIONS

1. Notice is hereby specifically given that in admitting vehicles to OKCF, whether those of exhibitors or patrons, and in permitting the bringing of any other property to OKCF, OSF does not assume any responsibility therefore, or accept the custody thereof, nor assume the personal control thereof in any manner.
2. No motorcycles, ATV's, bicycles, skates, segways, skateboards, rollerblades, scooters or any other powered or unpowered device of a similar nature will be permitted into the OSF operating area (except for ADA needs). Use of individual/private owned golf carts or other similar motorized transport within the OKC Fairgrounds gates is strictly prohibited. Minors without a valid driver's license are not allowed to operate any motorized vehicle.
3. Proper credentials are required at all times for access to parking and inside the OKCF.
4. Passenger vehicles and trailers will be directed to the appropriate parking facilities. Vehicles parked in unauthorized areas will be reported to OSF police and subsequently towed and/or impounded. The owner or driver may be required to pay towing charges to recover the vehicle.

REMAINING ON GROUNDS OVERNIGHT

1. Overnight parking for motorhomes, recreational vehicles or living quarter trailers is restricted to the RV lots at OKCF. Please visit the OKCF website for current information.



LIVESTOCK SHOW RULES & REGULATIONS

EXHIBITOR SHOW ELIGIBILITY

1. **OPEN SHOW EXHIBITOR ELIGIBILITY:** Shows designated as “Open” are open to all exhibitors of any age and any state residence.
2. **JUNIOR SHOW EXHIBITOR ELIGIBILITY**
 - a. All Junior Show exhibitors, other than the divisions with exceptions noted below, must be a bona fide member of an official 4-H Club or FFA chapter in the United States.
 - b. Junior and youth exhibitors may enter the open shows, for those breeds offering open shows, by filling out the appropriate forms and payment of applicable fees, except where otherwise noted. See the appropriate open division competition guide for entry fees, class schedules, etc.
 - c. **4-H Eligibility:** Youth may enroll in 4-H on August 1 if they are 8 AND in the 3rd grade on September 1. If they turn 8 after September 1 and are in 3rd grade, they will not be eligible to enroll in 4-H until the next 4-H year, but they may participate as a Cloverbud. When a child turns 9, they may join as a 4-H member regardless of grade level. 4-H membership ends on July 31 following the completion of the 12th grade, equivalency of 12th grade, GED or having reached the age of 19 on or before September 1, whichever comes first. Graduated high school seniors may complete their 4-H career by exhibiting in the fall fairs. A 4-H member’s enrollment status must have been “active” the previous year to exhibit in the fall fairs.
 - d. **FFA Eligibility:** Any student in grades 8-12 must be regularly enrolled in a year-long course of study in agricultural education at school in order to be eligible to participate in any FFA activity. Students in the seventh grade are not eligible for FFA membership in Oklahoma.
 - e. **Junior Show Exceptions:**
 - i. Division 1007 Junior Brangus: Refer to age restrictions as defined by the International Junior Brangus Breeders Association (IJBBA) rules available at <https://juniorbrangus.com/>.
 - ii. Division 1009 Junior Miniature Hereford Refer to age restrictions as defined by the American Hereford Association (AHA) rules available at <https://hereford.org/>
 - iii. Divisions 1019 & 1020: Junior Shorthorn/ShorthornPlus: Refer to age restrictions as defined by American Junior Shorthorn Association (AJSA) rules available at <https://juniorshorthorn.org/>.
 - iv. Divisions 1218-1219 & 1236-1241: Regional Natural Colored Wool Growers (NCWGA) Show: Refer to age restrictions as defined by the NCWGA rules available at <https://ncwga.org/>
3. **YOUTH SHOW EXHIBITOR ELIGIBILITY:** Youth do not have to be a 4-H or FFA member to participate. Youth must be no older than 19 years old by September 1.
4. Youth who have been declared ineligible to participate in extracurricular activities by their local school administration will be declared ineligible to participate in OSF shows. Youth who are eligible on the first day of the show will be considered eligible through the duration of the OSF. Similarly, youth who are considered ineligible the first day of the OSF will be considered ineligible for the duration of the show. If an exhibitor is ineligible to participate in the OSF for any reason, including rules of the Oklahoma Secondary Schools Activity Association (OSSAA), the animals owned by the exhibitor are also ineligible. Ineligible youth who participate in the show, forfeit all show premiums and awards, and will be subject to disciplinary action as provided by the local school policies. It will be the responsibility of the local school administration to notify OSF management if a particular student is ineligible to participate.
5. **Attire:** It is expected all exhibitors dress neatly with pride and in tradition with each show/division when presenting their animal(s). Exhibitors who are 4-H/FFA members showing in any division must dress in clean pressed jeans, clean shirt with collar and club emblem (4-H/FFA). 4-H/FFA jackets are acceptable but not required. T-shirts and headwear are not allowed. No 4-H/FFA emblem can be worn by an exhibitor not enrolled in 4-H/FFA.

ANIMAL OWNERSHIP ELIGIBILITY

1. Junior and youth livestock exhibitors must have continuously owned, and personally cared for, their animals since **July 1** of the current year for all breeding beef, dairy, sheep, swine, and goats.
2. For all breeding animals, exhibitors must have registration papers in their own name and be able to produce the originals, no copies. Registration papers must be transferred to the exhibitor’s name by **July 1** of the current year.
3. Any animal that has been sold at a premium auction at any show preceding OSF is not eligible to be exhibited.
4. Animals that are owned jointly or fed on a partnership basis with an adult are not eligible to show in the junior or youth livestock shows at the OSF. 4-H/FFA exhibitors must be the sole owners of any animal they show in the junior or youth livestock shows.

ENTRY INFORMATION & RULES

ENTRY DEADLINES/PROCEDURES

1. The online entry process will open **August 1, 2024** and **close at 11:59 p.m. on September 11, 2024** and all entries must be processed online. However, entries are accepted until the close of check-in for the breed/species show (see rule #4 below).
2. **Entries processed and paid for between August 1 – August 25 at 11:59 p.m. will incur no late fees.**
 - a. Any changes, unpaid balances or additions made after August 25 to entries previously submitted will be subject to additional late fees as noted below.
3. **Entries made after August 25 will incur late fees AND will not receive complimentary admission or parking passes.** See the following section [“Livestock Show Fees”](#) for the breakdown of entry fees.
4. Starting September 12, late entries must be submitted via hard copy/entry forms complete with all necessary paperwork and fees directly to the Livestock Show office. No entries will be accepted after check-in closes of the intended show.
5. **Deadline Exceptions for Other Agricultural Competitions:** See specific competition guides and information for Alfalfa Hay Contest, Open Giant Pumpkin Competition, Youth Extemporaneous Speech Contest, **Open Poultry**, and Ag Skillathons.
6. All fees associated with all entries in all shows must be paid via acceptable credit card at the time entries are submitted on ShoWorks. Checks will no longer be accepted.
7. Breed Sanctioning Additions: OSF reserves the right to accept additional entries to attain breed sanctioning rules. Additional fees may apply.

ENTRY REQUIREMENTS

1. A legible and accurate **W-9 form** must be submitted to the Livestock Show Office on or before **December 15** for all payees who anticipate cumulative premiums that may exceed \$599. It should be made clear as to which exhibitor the form is to be associated. The W-9 form must be filled out according to who will be receiving the money (i.e., exhibitor, parent/guardian). Oklahoma State Fair, Inc is not responsible for procuring this document. Premiums may be forfeited if a correct form is not received by the deadline. Options to return your completed W-9:
 - **Fax** to the attention of the Livestock Office at 405-948-4129
 - **Mail** to: Oklahoma State Fair; Attn: Livestock Office, 3001 General Pershing Blvd, OKC, OK 73107
 - **Upload** here: <https://okstatefair.wufoo.com/forms/m1w8gyed1z0klrj/>
 - Present **in person** to the Livestock Show Office or Administration Building.
2. Any outstanding balance due to denied credit card payments must be paid via cash, cashier’s check, or money order. OSF has the right to ban any exhibitor from future participation should there be a continuous problem.
3. Exhibitors make entries with the distinct understanding that their stock must be brought to the show ring for judging at the request of the superintendent or announcer. Any exhibitor refusing to do so, without just cause, when requested by the superintendent in charge, may forfeit any premium money previously won, and may also be required to remove their stock from OKCF within six (6) hours, after such refusal, possibly barring them from further showing at the OSF.
4. Entry into any OSF event/show automatically authorizes the use of any photographs, videos, audios, cablecasts, or other likenesses, procured while in attendance, of any individual or group associated with any livestock/animal so entered or involved in competition or exhibition at the OSF. Exhibitors are not allowed access to the static photographer’s backdrops or stations without prior receipt of express permission from the appropriate OSF contracted photographer.



ENTRY REFUNDS

1. Refunds for voluntary scratched or canceled entries will not be granted. Desired refunds for entries scratched or canceled due to exhibitor or animal injury or illness must be submitted on the appropriate cancellation form, to the livestock show office no later than 4 p.m. on the day prior to the first affected class/show. (Contact OSF Livestock Show Office for the appropriate form.) No refunds will be issued for processing fees, stalls, pens, space and/or admission tickets. For refunds of entry fee overpayment: refunds on entry fees will be considered with completion and submission of OSF Credit Refund Request form. No refunds of less than \$10 will be issued.

ARENA/BARN RULES

1. OSF management will assign all stalls. Exhibitors making entries and not exhibiting will forfeit all fees paid for stalls, pens, space, or admission tickets. No stalls will be used for any purpose other than to stall competing livestock and those stalls that have been assigned to accommodate breed association booths. **Exhibitors placing animals or equipment in any stalls not assigned specifically by OSF management may be expelled from the property, forfeiting any fees paid.** Management reserves the right to return entries when stall or tie out numbers are full.
2. It is permissible for exhibitors to bring their own feed and/or bedding, only straw or coarse shavings, but absolutely no deliveries, bulk or otherwise, from any other supplier may be made to OKCF during the OSF.
3. For your convenience, **feed and bedding** is available at OKCF. Feed and Bedding is located west of Barn 7 and Gate 7. Call the Feed and Bedding office (405-948-6786) for current prices.
4. The use of electric, open flame or space heaters is prohibited. Cooking or any heat/flame food preparation is not allowed in the barns.
5. All fans used in the livestock area are to be attached in the following manner:
 - a. Beef/Dairy: All fans must be hung securely above the tie area or on the stall. No fans will be allowed to operate from the center aisle or side aisle alley.
 - b. Swine/Sheep/Goats/Other: Fans must be attached to the pens or on a pedestal in the pen. No fans will be allowed to operate from any position in the center aisle or in the side alley aisle. There will be no cords across the center aisle and the user must tape down any cords used in the alley.
 - c. Personal Port-a-Cools are prohibited.
6. Any electrical equipment used in the barns must conform to manufacturer's specifications. Management strongly urges the use of fans with a three-wire ground plug. All electrical cords must be Underwriters Approved (UA).
7. Any form of penetrating nails, staples, tacks, screws, wire, fasteners, etc., as well as permanent tape, adhesives, glues, paints, or other markers/marketing materials is prohibited. Any damage or alteration caused by the use of any of these types of items will be charged to the exhibitors and may be cause for expulsion from OKCF. Flyers, advertisements, or any other documents cannot be posted anywhere other than on the specific bulletin boards in the barns, other than those for exclusive use by OSF management.
8. Management will assign tie outs for beef cattle in designated areas only, as space allows.
9. Wash animals in assigned and designated wash racks only. OSF staff and management will indicate appropriate wash racks for each species. Do not wash animals in stalls, walkways, streets, or any other non-designated area.
10. Taking animals into wash racks not allocated to a specific species or failing to remove animals from any arena/stall area and/or wash rack when so instructed will be considered unacceptable action/behavior and subject to immediate expulsion from the OKC Fairgrounds and possible future ban from the Oklahoma State Fair competitions.
11. Transfer animal waste from the stall to poly carts and return poly carts to the main aisle, if moved. Immediately remediate any spills of animal waste during the transfer process and place all spilled animal waste in bins.
12. OSF is committed to maintaining a tobacco-free environment in all its buildings, barns, and arenas. The use of all tobacco products (including cigarettes, electronic cigarettes, cigars, pipes, and smokeless tobacco) is prohibited except in specifically designated areas.



EXHIBITOR DUTIES and PRIVILEGES

1. The use of any drug or chemical compound that is not approved by the FDA for use in meat animals is prohibited. The illegal administration of approved drugs and compounds is also prohibited. All animals entered in the OSF are subject to blood, urine, and tissue tests by the OSF, FDA and USDA for illegal substances and substances that exceed the acceptable levels established by the USDA, FDA, FARD and EPA. A positive test will result in disqualification.
2. The exhibitor will assume full responsibility for any violation of regulations related to drugs and medications to include withdrawal times and the condemnation of carcasses due to drug rule/regulation violations.
3. Exhibitors are required to keep their spaces or stalls clean. All trash must be placed outside the buildings in a designated area. The aisles and passageways must be kept clear. No demonstrations, trophies, decorations, signs, banners, advertising material or exhibits of any kind are allowed in the aisles or public passageways.
4. If it is ascertained that any exhibitor has made, or caused to be made, any false statement regarding any exhibit, or if any exhibitor shall attempt to interfere with the judges in the performance of their duties, he/she shall be excluded from competing or exhibiting.
5. **Objectionable or disrespectful persons or behavior:** OSF reserves the right to eject or cause to be ejected from OKC Fairgrounds any person(s) it deems objectionable or in violation of any applicable laws, rules or regulations in its sole discretion. These actions may also cause the exhibitor to be banned from entering future Oklahoma State Fair competitions. Unacceptable behaviors include but are not necessarily limited to: a) Entering competition arenas/classes without being duly entered b) Disrespecting, ignoring or failing to follow instructions or directions given by OSF staff, officials, judges and/or superintendents c) causing undue confrontation with OSF staff, officials, judges, superintendents and/or other exhibitors. OSF management may prohibit an exhibitor or exhibitor's employee from competing or exhibiting due to any rude conduct toward an award committee, judge, superintendent, or any official of the OSF.



PREMIUMS and AWARDS

1. All classes **with one/single entry (entered, shown, and judged) will be eligible for the class entry/per head fee (only) as premium whenever a Premium is indicated.**
2. Premium payouts vary by species/breed. See the specific breed information in the division listings. See applicable aforementioned rules with regard to submission of W-9s.
3. In paying premiums, no evidence of award will be recognized unless the judge and superintendent have properly signed the judging results.
4. Premiums will only be awarded to classes in the premium list and as noted.
5. The judge's decision shall be final, and no appeal will be considered except in case of protest.
6. It is the responsibility of the payee to file, in writing, a claim for lost or incorrect awards/premiums/prize money no later than November 1, 2024. It is also the exhibitor/payee's responsibility to ensure the livestock office is in receipt of a valid and legible W-9 prior to the end of the OSF. Prize money in excess of \$599 will not be processed or paid without a valid W-9 being on file in the livestock show office.
7. Exhibitors will not be allowed to enter the ring with an outstanding debt or without being duly and officially entered and their account being paid in full. Any exhibitor failing to abide by this rule will forfeit any awards or premiums and will be subject to disciplinary action and ban from entering future Oklahoma State Fair competitions. In the event that an exhibitor does show while having a balance due on their account. OSF reserves the right to deduct money owed from any premium money the exhibitor may be awarded.

DETERMINING BREED SHOWS

1. **MAINTAINING A BREED SHOW:** Breed shows having less than ten (10) entries for two consecutive years will show in AOB division, if applicable, the following year. If an AOB division is not in the show, one will be created or the breed may be removed from the Livestock Show, unless the show is sanctioned and requires the breed class to be offered.
2. **TO MAKE A NEW BREED SHOW:**
 - a. **Current Shows in AOB:** Breeds in the AOB division having ten (10) or more entries for two consecutive years will have their own breed show division the following year.



- b. **New Shows:** Individuals/groups/associations interested in having a new breed show must submit an inquiry to the Livestock Show Office.

PROTESTS AND APPEALS

1. Any protest must be made in writing and accompanied by a deposit of \$250, which will be forfeited if the protest is not sustained. Protests must be filed with the OSF management within five (5) hours after the award was made. The award is considered "made" when a ribbon or premium card is placed.
2. Protests must contain at least one (1) specific charge, stating at length the facts or rule violated. The protest must list witnesses, with contact information, to substantiate the charge.
3. Management will not consider any complaint or appeal based upon the statement to the effect that the judge(s) are incompetent or have overlooked an animal or article.
4. The right of an exhibitor to appeal the decisions of a judge to management will lie only when it is charged that the award has been made in violation of the rules governing the exhibit, or when it is charged that the decision of the judge(s) has been influenced or interfered with by another.
5. All questions, disputes or differences not provided for under these rules shall be referred to management, whose decision shall be final.

FIRE REGULATIONS

The area around the exhibit buildings and barns must be kept free of motor vehicles. Roping off or blocking of aisles in the barns is prohibited. This includes blocking aisles with drapes or other obstructions. Exit doors shall not be blocked with any type of equipment (generators, hay, vehicles) even if overhead doors are open. No combustible materials are allowed in any barn. Designated fire lanes must be kept clear. Vehicles parked in unauthorized areas will be towed away and subject to recovery of the towing fee from the owner.

OKC CITY FIRE MARSHAL'S OFFICE SPECIAL EVENTS FIRE AND LIFE SAFETY FOR LIVESTOCK:

1. There shall be NO plastic or vinyl material in the barns, covering for stalls, or used for temporary security of retail vendor booths.
2. NO TWO (2) CONTINUOUS STALLS PER AISLE. SHALL BE COVERED AT ANY TIME.
3. Only stalls for tack storage, entertainment, or resting can be covered on the top, and will require a working smoke detector. (See #4)
4. The stalls can only be covered in a red rosin construction grade paper or butcher block paper, cheesecloth, either regular or restaurant type grade, or 100% cotton sheet.
5. Any stalls that are covered containing electrical appliances, (refrigerator, microwave, coffee pots) are required to have an operating smoke detector.
6. Any aisle space between stalls can be covered only if equal open space to material does not exceed **4 feet**. If your material is maximum **4 feet**, then the open space between the materials shall be a minimum of **4 feet**.
7. Combustible storefront or stall fronts **shall** be treated in ACCORDANCE WITH NFPA 701 to make them flame retardant and a certificate or similar proof is supplied to the Fire Marshal's Office prior to its application. Material that is being treated by the user must be done in the presence of an Inspector from the OKC Fire Marshal's Office.
8. No portable heaters of any type are allowed in the Oklahoma City Fairgrounds livestock facilities.
9. Awnings shall not extend out from stalls any further than **4 feet**.
10. **NO** tents or canopies are allowed inside the barns, arena, or livestock areas, unless they are NFPA 701 certified. This includes but is not limited to EZ-UP style pop up tents.
11. **NO SMOKING** will be permitted in any arena(s) or Livestock area(s) or barns.
12. **NO** hay, straw, shavings, or similar combustible materials used for decorations are permitted within any facility unless they have been treated in ACCORDANCE WITH NFPA 701 to make them flame retardant and a certificate or similar proof is supplied to the OKC Fire Marshal's Office prior to its application. (Hay or straw for animals is permissible and can be kept in stall areas for feeding and/or bedding).
13. Combustible trash shall be removed at least once a day during the period the arena/exhibit is occupied.
14. **NO PROPANE CYLINDERS** that have LPG in them are allowed inside any public assembly area without approval/permit from OKC Fire Marshal's Office.

Major Gary Jackson
Sr. Inspector-Special Events
Oklahoma City Fire Marshal's Office
Office: 405-297-3418
Email: gary.jackson@okc.gov



LIVESTOCK SHOW FEES

LIVESTOCK COMPETITIONS ENTRY FEES	
DESCRIPTION	FEES
Processing Fee (per exhibitor)	\$15
^Late Entry Fees (per exhibitor for entries made after August 25)	
Late Fee #1: August 25 – September 11	\$150
Late Fee #2: September 11 until check-in closes	\$200
Entry Fees	
Junior Steers Open Breeding Beef Cattle Open Dairy Cattle	\$40/Head
Junior Commercial Heifers Junior Breeding Beef Cattle Junior Dairy Cattle	\$35/Head
Junior Market/Prospect Goats Junior Sheep Junior/Youth Swine Open Llama/Alpaca Show <i>(per applicable class - see individual guide for show fees)</i>	\$25/Head
Open ABGA Goats Youth & Open Dairy Goats Open Pygmy Goats Open Sheep	\$20/Head
Miniature Silky Does/Bucks	\$15/Head/Show
Miniature Silky Wethers	\$5/Head/Show
Group Classes – All Shows	\$15/Group Entry
Poultry (Double Show)	\$6/Head
All Showmanship Divisions/Classes Ag Skillathons (Beef and Goat)	FREE
<p>Notes:</p> <p>^ Entries processed after August 25 will not be eligible to receive complimentary or purchase additional admissions or parking passes. Exhibitors will need to purchase parking and admission tickets online or at the gate upon arrival.</p> <p>Deadline Exceptions for Other Agricultural Competitions: See specific competition guides and information for Alfalfa Hay Contest, Open Giant Pumpkin Competition, Youth Extemporaneous Speech Contest, Open Poultry, and Ag Skillathons.</p>	

AG SKILLATHONS & SHOWMANSHIP ENTRIES

Participants can enter Ag Skillathons (Beef & Goat) or showmanship divisions by **registering online via QR code or link** provided on division competition guide. These will be separate entries from ShoWorks. There are no entry fees, late entry fees or a processing fee for participation in these events. See individual competition guides for more information.



NON-LIVESTOCK COMPETITIONS ENTRY FEES	
DESCRIPTION	FEES
Processing Fee (per exhibitor/grower or team)	\$15
^ Entry Fees	
Youth Extemporaneous Public Speaking Contest	\$10/speaker
Giant Pumpkin Weigh-Off Competition (Non-member)	\$10/grower or team
^ Late Entry Fees	
Giant Pumpkin Weigh-Off Competition (Non-member)	\$10/grower or team
<p>Notes: ^ Entries processed after August 25 will not be eligible to receive complimentary or purchase additional admissions or parking passes. Exhibitors will need to purchase parking and admission tickets online or at the gate upon arrival.</p>	

OPTIONAL/ADDITIONAL FEES	
DESCRIPTION	FEES
Animal Substitution Fee	\$10/animal
Cattle Tie-Out Fee	\$20/tie-out
Cattle Equipment Permit (Grooming Chute)	\$25/permit
Goat/Sheep Equipment Permit (Grooming Stand)	\$15/permit

OPTIONAL/ADDITIONAL FEES

- Equipment Permits: One (1) equipment permit for their grooming equipment (i.e. grooming chute or stand) will be granted to each exhibitor with their entries.**
 - If an exhibitor brings additional grooming equipment, then a permit will need to be purchased for each additional chute/stand.
 - Exception: Cattle fitter guards are permissible for use within the stall space allocated to the exhibitor. No equipment permits necessary.
- Permits for grooming equipment(s) will be distributed to exhibitors when they pick up credentials. Exhibitors who bring additional grooming chutes/stands and fail to purchase an equipment permit will be responsible for payment before the show. If payment is not collected, exhibitors will forfeit the cost from premiums. Permits must be displayed/affixed on the equipment.
- Animal Substitutions:** Unless otherwise defined in the individual breed/species competition guide, the following policies apply to substitution of entries:
 - Must be submitted in writing with the completion of a substitution form and payment of fees.
 - Substitutions will only be accepted for animals of the same breed/species, gender and owned by the same exhibitor/owner as indicated on the original entries. Proof of ownership and substitution fee must be submitted to the livestock show office no later than 4 p.m. on the day before the affected class.
- Cattle Tie-Out Fee:** Exhibitors who would like to tie-out their cattle will need to purchase a permit and use the designated space allotted to them by OSF. One permit is good for one animal from September 11 - September 15.
 - Exhibitors who tie-out but did not purchase a tie-out space will need to relocate their cattle back to their show stall space and will be responsible for cleaning up the tie-out space used.




EXHIBITOR ADMISSION INFORMATION

- Armband(s), according to the scale below, will be issued to each exhibitor paid in full for entries in open, junior or youth livestock shows.
 - EXCEPTIONS:** Alfalfa Hay Contest, Open Giant Pumpkin Competition, Youth Extemporaneous Speech Contest, **Open Poultry**, and Ag Skillathons. See individual Competition Guides for admission information.
- Armbands must be worn by the exhibitor for entry through Gate 7. Loose, damaged, or non-fitted armbands will NOT be accepted for entry. Lost armbands will not be replaced. Armbands are dated and good for admission, and re-admission, through the appropriate gates during the dates printed on the band. The armband admission scale is per exhibitor, not per junior, youth, or open show:


ARMBAND ADMISSION SCALE		
1	head entered:	1 armband
2 to 3	head entered:	2 armbands
4 to 5	head entered:	3 armbands
6+	head entered:	4 armbands

EXHIBITOR FAIR ADMISSION INFORMATION

Fair admissions can be purchased through the OSF Box Office (via online or on-location) in advance or at the gate. OSF advance tickets are available for purchase prior to opening day with regular pricing starting opening day.



SAVE MONEY
by checking
[Hours & Admissions | OK State Fair](#)
for our **special discount days** and
save on admission!



Purchases made through OSF Box Office will be received via e-ticket. Therefore, the Livestock Office will no longer be selling admissions in addition to entries. Our staff hopes the e-ticket option will be easier for exhibitors to receive and use admissions while at the OKC Fairgrounds.

The following credentials will be available for purchase **with entries before August 25** and will not be available after this deadline:

LIVESTOCK SHOW OFFICE PURCHASES	
<i>(Available for purchase prior to 8/25)</i>	
Exhibitor Armband (Week 1 - cap of 400 for sale, Week 2 - cap of 100 for sale) <i>(limit two (2) additional armbands per week of competition per exhibitor)</i>	\$35
Additional Exhibitor Parking Pass <i>(limit one (1) additional pass per week of competition per exhibitor per week of competition(s) entered; good for any paid permit parking lot, including Exhibitor Trailer Parking Lot)</i>	\$20

ARRIVAL/PARKING INFORMATION

1. Upon review of entries and close of the first deadline, exhibitors will receive an email regarding arrival and parking information to the email address provided with entries. Check your inbox and spam folders for an email address with @okstatefair.com for confirmation and arrival instructions.
2. Animals duly entered in the OSF can be brought to OKCF via Gate 7 by arriving at Portland and Black Gold (3466 Black Gold Drive, Oklahoma City 73107).
3. Gate 7 Operating Hours:
 - a. September 11, noon until 10 p.m.
 - b. September 12 – 22, 6:30 a.m. until 10 p.m.
 - c. Early tack arrival for the first weekend of shows can begin Wednesday, September 11, 2024 at 8 a.m.
There will be NO ANIMALS allowed to enter Gate 7 between 8 a.m. to noon.
4. **MANDATORY:** Valid health papers, as required for each species, must be presented to the Animal Health Inspectors upon arrival at Gate 7. No animals will be allowed entrance without said documentation and inspection. Check the [“Health & Sanitary Regulations” section](#) as well as the specific competition guides for more information on animal health requirements.
5. Only vehicles with entered animals or a one-time delivery of heavy equipment will be allowed through Gate 7. Please do not contribute to the congestion surrounding the barns by attempting to drive in with passenger vehicles.
6. **Exhibitor parking passes** are offered one (1) per registered exhibitor and are for parking of one (1) vehicle with trailer in the exhibitor parking area south/west of the barns or without a trailer, vehicle only, in any other permit/paid lot. This permit is not good for gate admission, and it does not guarantee a parking place and will be issued for the period of time surrounding the dates of entered exhibition only. Subject to availability and rules as stated on the hangtag. Visit <https://okstatefair.com/information/parking-and-trams> for additional parking information.

AG TEACHER/LEADER ADMISSION

1. OSF provides complimentary admission and parking to Oklahoma FFA agricultural educators and Oklahoma 4-H extension agents who submit a request **by midnight on Monday, September 9, 2024**. Links to the forms will open on July 1, 2024. Fill out the relevant links below to receive OSF admission:
 - a. Livestock Judging Contest - Admission & Parking Request Form
 - i. <https://forms.office.com/r/yE7gmxFqiM>
 - b. Dairy Judging Contest - Admission & Parking Request Form
 - i. <https://okstatefair.wufoo.com/forms/z1r7qzbi0vvqbnk/>
 - c. Livestock Show & Exhibits - Admission & Parking Request Form
 - i. <https://okstatefair.wufoo.com/forms/z1gnfvk0l2xl3a/>
2. Teachers who do not submit requests for admission by the deadline(s) may not receive complimentary admission and parking. Any extra admissions at the Show Office will be distributed on a first come, first serve basis.



ANIMAL WELFARE POLICY

OSF is committed to the humane treatment of all animals exhibited. Every possible precaution is taken to ensure the animals' safety and wellbeing. Any exhibitor found using unethical practices or mistreating an animal at the OSF will be immediately removed from the premises and reported to the proper authorities. All privileges will be withdrawn, attraction fees will be prorated, and premiums will not be awarded.

ANIMAL EXHIBITS, SHOWS AND COMPETITIONS

It is the responsibility of the owner/exhibitor/handler/agent for each animal being brought to OKCF to be aware of and adhere to the most current rules and regulations regarding animal transportation, disease control, vaccinations, and health documentation requirement, in accordance with the Oklahoma Department of Agriculture, Food and Forestry, Animal Industry Services. For the most current information, call 405-522-6141 or access the Animal Industry State Veterinarian – ODAFF (ok.gov) and scroll down to the section for Animal Movement and Importation.



Any animal not cleaned or fitted to show as a true representative of the breed it represents shall be disqualified, and the judges will not award premiums on such animals. Exhibitors are requested to see that their attendants are neatly and appropriately dressed when their animals enter the show ring. Herds persons are requested to present an attractive and appealing barn exhibit(s), by keeping their stall areas neat and clean, keeping the spectator walkways clear of all straw, feed, etc., refraining from cooking in the barns, keeping audio equipment at a low volume, following any fire and life-safety rules, and maintaining positive behavior at all times.

- A. **Summary of Program:** Exhibitors show animals for many reasons. The exhibition provides education to the public about livestock and farm animals, as well as the overall agriculture industry. Competition in the show ring provides a forum for comparison of livestock animals, based on selected or desired characteristics and genetics. The results contribute to breeding and overall species improvement. These selected characteristics are reflected in the market and usually follow consumer demand for a certain type of product, for example: leaner meat. The Fair also provides advertisements for the breeders and owners of the animals. The 4-H and FFA programs and other junior organizations teach valuable skills to youth, such as finance management, responsibility, decision making and leadership.
- B. **Education:** The OSF has several educational exhibits and programs designed to educate, entertain, and inform the public about livestock and agriculture. The Fair utilizes judging commentators during the livestock shows to involve and inform the public about what is taking place in the show ring. Commentators cover what the judge is looking for in the animals, judging terminology (or “reasons”), as well as fun and educational information about the judged animals. The junior livestock exhibitors display educational exhibits in the livestock area during the Fair. The Fair has a special livestock exhibit area designed to provide species diversity and special education.
- C. **Livestock Exhibits**
 1. Exhibitor Guidelines
 - a) The Fair expects exhibitors to be knowledgeable about exhibit rules, about their projects and always to be prepared to answer questions. The exhibitor’s role is that of an ambassador.
 - b) Exhibitors should learn additional details about animals and their roles in society. For example: it is fun and interesting to share by-product uses and other facts with the public. The Fair encourages educational exhibits in barns.
 - c) The Fair expects the exhibitors to cooperate with the AgriBusiness department, assistants, barn crews, the Fair management, and any appointed volunteers. The Fair also expects good sportsmanship, conduct and open communication.
 - d) Notify the AgriBusiness department if there is a confrontation with animal activists, or if there is someone approaching exhibitors and asking questions that make the exhibitors uneasy. Also notify the AgriBusiness department if someone who is unfamiliar or looks suspicious is taking photographs or video footage of the animals.

2. Livestock Exhibit Guidelines

- a) Keep the needs of the animals as the number one priority with regard to the following:
 - Food and water are clean and fresh.
 - Stalls are clean, with fresh bedding, and free of debris and waste.
 - Animals are clean and well groomed.
 - Transportation is safe and clean. Use care when loading and unloading.
 - Stalls have enough space to prevent crowding, fighting or discomfort.
 - Animals are tied in the stalls with enough slack in the rope so they may lie down.
 - Use proper grooming techniques and equipment when preparing the animals for showing, to cause the least amount of discomfort to the animal.
 - The management will not tolerate any practices deemed inappropriate, unethical, or inhumane. Report any sick animal immediately to the proper authority who may suggest that the exhibitor contact a veterinarian.
- b) Feed shall be appropriate for the animal's age, weight, and species. Exhibitors should read all feed labels for appropriate use and portions. Adhere to all proper withdrawal times if using medicated feeds. Follow the requirements of the Food and Drug Administration (FDA) dosages and withdrawal times of drugs, see *Drug Residue Policy*. The Fair prohibits any unnatural, inhumane weight control prior to weigh-in.
- c) Exhibitors should know the proper use of all equipment and exhibit safety awareness. This includes removing equipment from walkways, so it is not a hazard to people or animals. Tack areas, stalls, pens, and cages shall be neat and clean, with equipment put away in tack boxes or stored out of the way. Exhibitors shall use all equipment for approved and legal uses only.

EQUINE SHOWS AND COMPETITIONS

USDA AND APHIS (Animal and Plant Health Inspection Services), under the Horse Protection Act, which prohibits making a horse sore to enhance its performance, regulate horse shows. OSF also regulates horse shows regarding prohibited substances and the drugging of horses. USEF members and affiliated shows are subject to the rules and industry review program administered by the United States Equestrian Federation. Shows may also be subject to standards set by the individual breed associations, when and if applicable.



ANIMAL ATTRACTIONS AND EDUCATIONAL EXHIBITS

Fair management contracts and supervises animal attraction and educational exhibits. Both animal attractions and educational exhibits are required to provide educational material about their animals and their care to the public. Fair management encourages interaction with the public. This may be a criterion for issuing a contract.

Prior to opening to the public, a Fair designated veterinarian may inspect each animal exhibit. The veterinarian may also make periodic checks throughout the Fair. Each animal exhibit will designate a representative to be responsible and to be available during the Fair operating hours to answer questions, talk to the media or respond to an emergency

A. General guidelines for care

- 1) Exhibit staff shall be available at all times. Signs will be posted informing the public of acceptable behavior in any petting facility.
- 2) The staff should be familiar with basic animal husbandry practices.
- 3) Keep animals groomed and clean at **all** times. Keep feed and water receptacles clean and free of debris. The exhibitor will clean animal stalls or pens daily. Properly dispose of manure and used bedding in the appropriate receptacles or areas. Replace old bedding with fresh material.
- 4) Alternate and give rest periods to the animals especially during hot weather. The resting pens and working area shall have shade with proper ventilation.
- 5) Feed animals a nutritionally balanced diet as appropriate and with consideration to the animal's age, weight, and species. Water regularly when working and have clean water available in resting pens.
- 6) The facility operator should make an effort to control flies in the exhibit and resting areas. Proper and prompt disposal of manure and used bedding is beneficial to this effort.
- 7) Exhibitors shall use all equipment for approved and legal uses only. The management will not tolerate any practices deemed inappropriate, unethical, or inhumane.



- 8) Report any sick or injured animal immediately to Fair management, who may suggest that the exhibitor contact a veterinarian.
 - 9) All animals are required to have a current, within 30 days, certificate of veterinary inspection. Many species are required to have negative tests against certain diseases. It is the responsibility of the exhibitor to contact the Oklahoma Department of Agriculture, Food and Forestry at 405-522-6141 or <http://ag.ok.gov> to make sure all required testing has been performed.
- B. Animal Petting Facilities
The design of an animal petting facility should help educate the public about different types of animals and animal care while regarding the animals' basic needs, including time away from the public. It should also provide a rare opportunity for contact and interaction with animals. Petting zoos may feature exotic animals not typically raised on farms.
- C. Pony Rides
- 1) The ponies should have a pad or cushioned surface such as lawn or shavings to prevent ponies from walking on the ground or asphalt for extended periods.
 - 2) The pony ride should be a safe site, away from potential, unexpected noises, and sudden movements.
 - 3) Alternate the ponies to allow for reasonable rest periods.
 - 4) Water the ponies regularly.
 - 5) Do not expose the ponies to the sun for extended periods without breaks for rest, shade, and water.
 - 6) All equine are required to have a current Certificate of Veterinary Inspection (within 30 days) and a current negative Equine Infectious Anemia test (within 12 months).
- D. Pig Races
- 1) Pig races provide fast-paced family entertainment and crowd interaction. The USDA regulates pig races and requires an exhibitor license for performing animals. The Oklahoma Department of Agriculture, Food and Forestry requires certificates of veterinary inspection, and negative tests for brucellosis and pseudorabies for pigs to enter the state. The owner/operator of the pig races may need to produce current, and correct, copies of all CVIs and results of blood tests as requested by OSF management, or in compliance with their contract. The owner/operator of the pig races may need to produce current, and correct, copies of all licenses as regulated by the USDA. Operators should maintain itinerary or schedule of OSF dates to document past and future exhibitions. Pig races shall follow the general policies outlined in this manual, as well as the appropriate feed for the piglet's age.
- E. Other Animal Exhibits (not previously listed)
- 1) It is up to the exhibitor of animal attractions including: any owner exhibiting animals doing tricks or shows; carnivals and concessionaires who exhibit regulated animals; anyone who uses regulated animals to promote or advertise goods and services; animals used to promote photographs or photography; and anyone exhibiting farm animals for nonagricultural purposes to have knowledge of and obtain in a timely manner any required licenses.

ANIMAL CARE POLICY DISCIPLINE AND VIOLATION NOTICE

- A. Fair Management relies on staff members, volunteers, exhibitors, and the public to report any situations that may be potential policy violations.
- B. Fair Management will investigate and determine the severity of all complaints and concerns.
- C. If there is a violation of the Animal Welfare Policy, the exhibitor will receive a verbal warning and the steps needed to correct the violation.
- D. With a second violation, the exhibitor will receive a written violation notice and Fair Management may call the Humane Society or veterinarian, at the exhibitor's expense, depending on the severity of the violation. The removal of animals and/or exhibitors from OKCF may become necessary.
- E. A record of the verbal violation warning, and copies of the violation notices will become part of the exhibitor's file. Fair Management will consider these before issuing another contract.
- F. Any other public or staff complaint filed will become part of the exhibitor's file. The exhibitor will receive copies.
- G. Fair Management reserves the right to disqualify any competitive exhibitors in violation of the animal care policy from any awards and premiums.



OKLAHOMA STATE FAIR ANIMAL CARE POLICY VIOLATION NOTICE

VIOLATOR:

AREA:

CONTACT NUMBER: _____

DATE OF VIOLATION: _____

DESCRIPTION OF VIOLATION:

ACTION TAKEN:

WITNESS: _____

DATE: _____

CC: Fair Manager, Exhibit Supervisor



HEALTH & SANITARY REGULATIONS

OVERVIEW

1. The State Board of Agriculture provided the following rules and regulations to the Fair. These rules will govern admission of livestock at the OSF.
2. An official of the Animal Industry Division, Oklahoma Department of Agriculture, Food and Forestry, will be present during livestock entry times and will check all Certificates of Veterinary Inspection (CVI) required under the following regulations.
3. The Animal Industry Division, Oklahoma Department of Agriculture, Food and Forestry, must validate all Certificates of Veterinary Inspection before animals are given stall or pen space in the barns.
4. An official Certificate of Veterinary Inspection (CVI) must accompany all show animals, except poultry can instead of a 9-3 form (see “Poultry” below). The official CVI or 9-3 form must be issued within 30 days of arrival and shall be available at all times to the representatives of the Animal Industry Division.
5. All out-of-state livestock, including domesticated poultry, birds and rabbits must meet Oklahoma’s import requirements. Import requirements may be obtained by going to Animal Industry State Veterinarian – ODAFF (ag.ok.gov) and scrolling down to the link to the Animal Movement and Importation section.
6. All animals must be free of infectious, communicable, or contagious diseases and if such disease is found, it will be cause for removal of the animal(s) from exhibition.

CATTLE

1. Cattle must be accompanied by an official Certificate of Veterinary Inspection, issued within 30 days of arrival that shows complete description of livestock as to age, sex, breed, and individual identification, such as tattoo or ear tag. Cattle from out-of-state are required to have an official USDA identification tag as required by the Federal Animal Disease Traceability rule.
2. No tuberculosis (TB) test is required for beef or dairy cattle from Oklahoma.
3. **All lactating DAIRY cattle:** All lactating dairy cattle planning to exhibit must contact their veterinarian to collect a milk sample and submit it to the Oklahoma Animal Disease Diagnostic Laboratory to be tested for HPAI
 - a. A. The sample must be collected within 7 days of movement to the exhibition
 - b. Negative results must be listed on a Certificate of Veterinary Inspection with official identification. The CVI must be completed within 7 days of entry to the exhibition.
4. **Out-of-state BEEF breeds:** Must originate from a TB free state, a TB Accredited Free Herd or must be TB test negative within 60 days of arrival at the show if over 6 months of age.
 - a. **Areas not Tuberculosis Free as of June 1, 2024 are the Michigan counties of Montmorency, Alpena, Oscoda, and Alcona.**
5. **Out-of-state DAIRY breeds:** Must originate from a TB free state, a TB Accredited Free Herd or must be TB test negative within 60 days of arrival at the show if over 6 months of age.
 - a. **Areas not Tuberculosis Free as of June 1, 2024 are the Michigan counties of Montmorency, Alpena, Oscoda, and Alcona.**
6. Any sexually intact dairy animal 6 months of age or older changing ownership within the state of Oklahoma is required to have a negative TB test within 60 days before change of ownership.

SHEEP and GOATS

1. Must be accompanied by an official Certificate of Veterinary Inspection. The CVI must include a statement indicating the animal to have been inspected and found free of scabies and other external parasites.
2. All sheep and goats must be individually identified with one of the following:
 - a. Official USDA ear tag
 - b. Official breed registry tattoo or microchip, (only if the animal is accompanied by a registration certificate).



[Go to Table of Contents](#)

ILLEGIBLE TATTOOS WILL BE CONSIDERED AS NO IDENTIFICATION.



LLAMAS and ALPACAS

1. Each animal must be accompanied by an individual Certificate of Veterinary Inspection (CVI), stating that the animal is free of infections and contagious disease within 30 days before arrival at the show.

SWINE

1. Must be accompanied by an official Certificate of Veterinary Inspection, (CVI), processed and issued within 30 days of arrival, that shows official individual identification by an 840 electronic tag, and complete description of livestock as to age, sex, and breed. **All swine must have a premises ID listed on the CVI.**
2. **In-state swine** must have a negative test for Brucellosis and Pseudorabies after **May 15, 2024** or be from a Validated Brucellosis/Qualified Pseudorabies Free Herd and be exhibited by the owners and/or immediate family members. The last quarterly test date (July test) must be listed on the CVI
 - a. **Breeding gilts** should be quarantined and retested 30 days after the show before being commingled with other breeding swine.
3. **Out-of-state swine** must have a CVI, an entry permit, proof of negative test for Brucellosis and Pseudorabies within 30 days of entry to the show or be from a Validated/Qualified Herd with verification of the last quarterly test within 3 months and be identified with an official individual USDA Ear Tag.

DOGS

1. Must be accompanied by an official Certificate of Veterinary Inspection.
2. All dogs over 3 months of age must have been officially vaccinated against rabies within 12 months of arrival.
3. All dogs must have been vaccinated against distemper, hepatitis, leptospirosis, and parvovirus within the previous 12 months.

EQUINE

1. All horses and other equine must be accompanied by a Certificate of Veterinary Inspection or valid Extended Equine Certificate of Veterinary inspection showing age, breed, sex, and markings to positively identify the animals, including all vaccinations, date, and result of required tests, and issued within 30 days of arrival and an official document verifying a negative test for Equine Infectious Anemia showing a test date within 12 months prior to exhibition.
2. Nursing foals less than 6 months of age, accompanied by their negative tested and documented dams, are exempt from test requirements.
3. The laboratory conducting the test must be approved by APHIS, USDA. Both aforementioned documents must clearly identify the animal(s) listed and be presented upon arrival before the animals can be admitted to the grounds or unloaded from the transport vehicles.

POULTRY

1. In-State poultry:
 - a. Either be NPIP Certified OR
 - b. Have a Negative PT test (9-2 Form) less than 90 days prior to the show date and have a permanent leg or wing band.
2. Out-of-state poultry:
 - a. Either be NPIP certified and have a Form 9-3 less than 30 days prior to the show OR
 - b. Have a negative PT test with Form 9-2 less than 90 days prior to show and have a permanent leg or wing band and a Certificate of Veterinary Inspection (CVI) less than 30 days prior to the show date.

IMPORTANT REMINDER

For the most current information, call 405-522-6141 or access the State Veterinarian's website at www.ag.ok.gov/Divisions/Animal-Industry-State-Veterinarian and scroll down to the "Animal Movement and Importation" section.

All animals must be accompanied with a CVI (except poultry) and all other required documentation mentioned above or they **will not** be allowed to enter the fairgrounds.



SHOW RING CODE OF ETHICS

Believing it is in the best interest of all livestock breeders to maintain a reputation of integrity and to continue to present a wholesome and progressive image in the show ring, the following list of practices are considered unacceptable in the presentation of livestock. The use of such practices or procedures is, therefore, considered a violation of the rules and regulations governing the OSF.

The following list of practices are considered unacceptable in the presentation of livestock:

1. Misrepresenting the age of the animal for the class in which it is shown.
2. Treating or massaging any part of the body internally or externally with an irritant, counter-irritant or other substance to temporarily straighten a weak back or loin or to produce unnatural animation.
3. Minimizing the effects of crampiness by feeding or injecting drugs, depressants or applying packs, or using any artificial contrivance or therapeutic treatment exempting normal exercise.
4. Striking the animal to cause swelling.
5. Surgery or other procedure performed to change the natural process of growth, maturation, contour, or appearance of any animal, to include teeth, is prohibited. Not included is removal of teats or horns, clipping and dressing of hair, and trimming of hooves.
6. Insertion of foreign material under the skin.
7. Any attempt to change the natural color of an animal, either purebred or crossbred, by changing the color or adding false hair, fleece or skin at any point, spot, or area of the animal's body.
8. The use of alcoholic beverages in the feed or administered as a drench.
9. The practice of artificial filling by pumping or any other device is prohibited.
10. Administration of a drug, of any kind or description, internally or externally, prior to entering the show ring, except for treating a recognized disease or injury and for tranquilizing bulls that may otherwise be dangerous or females in heat. For the purpose of these rules, the term "legal drug" shall mean any substance, the sale, possession or use of which is controlled by license under federal, state, or local laws or regulations and any substance commonly used by the medical or veterinary professions. The use of any chemical and/or compound that is not approved by the FDA for use in meat producing animals and the illegal use of approved chemicals and/or compounds are prohibited. All animals shall be subject to tests for foreign substances that exceed the acceptable levels established by the USDA, FDA, or EPA. A positive test will result in disqualification, forfeiture of any premiums and/or awards, and will exclude the exhibitor from future competition at the OSF. Licensed veterinarians will administer all medications only.
11. Balancing the udder by any abnormal means including the use of a mechanical contrivance or injection of fluid or drugs. Setting the teats and/or occluding, sealing the ends, with a mechanical contrivance or with the use of a chemical preparation. Treating or massaging the udder or its attachments with an irritant or counterirritant. The use of common products such as fly spray, ointment, or liniment in excess to the extent that it is irritating is included as an irritant unless required to reduce edema at the time of calving.
12. Criticizing or interfering with the judge, or other exhibitors, breed representatives or show officials before, during or after the event may result in an individual or group being expelled, placed on probation, declared ineligible, or barred from exhibiting at the event.

Any violation of the rules and regulations designed for the individual shows or the show ring code of ethics may result in forfeiture of all premiums and awards, disqualification, expulsion or probation of the exhibitor, organized group, individual or livestock involved. Probation, disqualification, expulsion, or other disciplinary action of OSF management will be final. Such action will require application for readmission under such terms as OSF management may prescribe before the group or individual is allowed to exhibit at future events.

The OSF is a member of the following show support organizations: North American Livestock Show and Rodeo Managers Association; and International Association of Fairs and Expositions. Violations at this show may affect the eligibility of the individual, group or sponsoring organization from participation at other shows that are also members of these organizations. The names of anyone in violation will be released to the other Fairs and Expositions.



GOAT

COMPETITION GUIDES



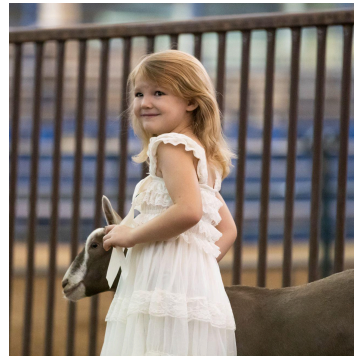
JUNIOR/YOUTH GOAT SHOWMANSHIP DIVISIONS

Entry Deadline: Register online via QR code or link before show start time (see next page)

SHOWMANSHIP DIVISIONS & SCHEDULE

	Junior Market Wether/Wether Dam Superintendents: Tara Martin & Haley Merhoff	September 13	@ 2 p.m.	Barn 1 Arena
	Junior Prospect Doe Superintendents: Tara Martin & Haley Merhoff	September 13	Following Jr. Market Goat Showmanship	Barn 1 Arena
	Youth Dairy Goats Superintendents: Curt & Tamra Cash	September 17	@ 8:30 a.m.	Barn 1 Arena

Refer to the Rules and Regulations sections for important information including animal health requirements, liability agreement, additional fees, admissions, deadlines, etc.





ADDITIONAL RULES

- All animals and exhibitors must be duly entered into an individual class within each Junior/Youth division species shows.
- Showmanship grade is as of the date of the show.
- Superintendents have the right to divide each division into heats.
- Contestants will be divided into the following grade categories:

CLASSES		AWARDS
01.	Senior Exhibitors (Grades 10 - 12)	Ribbons
02.	Division 1 Champion and Reserve	Rosettes
03.	Intermediate Exhibitors (Grades 7 - 9)	Ribbons
04.	Division 2 Champion and Reserve	Rosettes
05.	Junior Exhibitors (Grades 3 - 6)	Ribbons
06.	Division 3 Champion and Reserve	Rosettes
07.	*Pee Wee Exhibitors – (Grades K - 2)	Mini-Rosettes
08.	Overall Division Champion & Reserve Showman	Banner, Medallion & Award

*PEE WEE SHOWMANSHIP CLASS RULES

1. Children must be at least 4 years old, but not more than 7 years old, as of the date of the show.
2. Written parent/guardian permission is required. Consent forms are available at the show and must be signed before entering the show ring.
3. No entry fee, however, the exhibitor and family will be required to purchase a ticket to the Oklahoma State Fair.
4. Participant does not need to own their animal but is responsible for finding an animal and necessary equipment to use. If the exhibitor and family choose to haul their own animal to OKC to exhibit in this competition, the exhibitor will need to adhere to the [Health and Sanitary Regulations](#) to enter the grounds with the animal.
5. Participants will not be eligible to compete for Overall Champion or Reserve Showman.
6. If rules are not followed, the ringmaster will ask the participant to leave the show ring.

AWARD INFORMATION

- Each Pee Wee participant will be given a mini-rosette participation ribbon.
- Ribbons will be awarded to the top 10 exhibitors in each class, excluding championships and Pee Wee.
- Overall division champion and reserve showman will receive a banner, OSF medallion, and a special award.

REGISTER HERE!
(Registration opens August 1st)

EYO Exhibitors

<https://form.jotform.com/231016228278150>

OSF Exhibitors

<https://forms.gle/tRt5RrV73w3BZj2G9>





JUNIOR MARKET WETHERS (DIVISION 1300)

Superintendent: Tara Martin & Haley Merhoff



Entry Deadline: August 25 (*Late fees apply after the deadline.*)

May Start Arriving: September 11 @ Noon

Animals in Place: September 13 @ 1 p.m.

Check-In/Cards Due: September 13 @ 3 p.m.

Judged in Barn 1 Arena: September 14 @ 9 a.m.

Released: After completion of showing



*2023 Grand Champion
Market Wether
owned by Sayde Allen*

Refer to the Rules and Regulations sections for important information including animal health requirements, liability agreement, additional fees, admissions, deadlines, etc.

Junior Market Goat shows will be NO FIT, meaning blow and show only. No paint or glue allowed.

ADDITIONAL RULES

1. An exhibitor may show a maximum of three (3) Market Wether goats.
2. There is a minimum weight of 40 pounds and maximum weight of 160 pounds.
3. A scrapie tag, official breed registry tattoo or microchip (only if the animal is accompanied by a registration certificate) will be required on all animals.
4. There will be no official weigh-in. Scales will be available for weighing. The exhibitor will check in via the self-check-in system.
5. Upon completion of each class, the superintendent will weigh a minimum of the top five (5) Market Wethers. Any Market Wether that has gained more than five (5) pounds from the weight listed on the official showing weight will be disqualified and the placing of all animals will be moved up.
6. The use of hydration utensils and the use of soft muzzles are permitted in the stalls only. Soft muzzles must be removed from the goats any time they are taken from their stall. Failure to use hydration utensils and soft muzzles in the stalls will constitute disqualification.
7. Market Wethers must be sheared to a maximum of 3/8" residual hair length.
8. Market Wethers may be braced. The animals must have all four (4) feet on the ground.
9. Dehorning of goats at this show is not suggested; however, horns should be tipped and rounded. Goats with horns sharper than deemed safe by the show superintendent or OSF staff will be required to be tipped or rounded or isolated and not shown.

CLASSES

- Broken by weight after check-in.

AWARDS / PREMIUM INFORMATION

- Ribbons will be awarded to the top 10 in each class (excluding championship classes)

AWARD	1 st	2 nd	3 rd	4 th	5 th	6 th	7 th	8 th
*Individual Class Premiums	\$60	\$50	\$40	\$30	\$30	\$30	\$30	\$30
Division Champions	Rosette	Rosette						
Overall Grand Champions	\$750, Banner & Award	\$500 & Banner	\$300 & Banner	\$200 & Banner	\$100 & Banner			

*All classes with one/single entry (entered, shown, and judged) will be eligible for the class entry/per head fee (only) as premium whenever a premium is indicated.





JUNIOR MARKET WETHER DAMS (DIVISION 1301)

Superintendent: Tara Martin & Haley Merhoff



Entry Deadline: August 25 (*Late fees apply after the deadline.*)

May Start Arriving: September 11 @ Noon

Animals in Place: September 13 @ 1 p.m.

Check-In/Cards Due: September 13 @ 3 p.m.

Judged in Barn 1 Arena: September 14 @ 1 p.m.

Released: After completion of showing



*2023 Grand Champion
Market Wether Dam
owned by Sophia Estrada*

Refer to the Rules and Regulations sections for important information including animal health requirements, liability agreement, additional fees, admissions, deadlines, etc.

Junior Market Goat shows will be NO FIT, meaning blow and show only. No paint or glue allowed.

ADDITIONAL RULES

1. An exhibitor may show a maximum of three (3) Market Wether Dam goats.
2. There is a minimum weight of 40 pounds and maximum weight of 160 pounds.
3. A scrapie tag, official breed registry tattoo or microchip (only if the animal is accompanied by a registration certificate) will be required on all animals.
4. There will be no official weigh-in. Scales will be available for weighing. The exhibitor will check in via the self-check-in system.
5. Upon completion of each class, the superintendent will weigh a minimum of the top five (5) Market Wethers Dams. Any Market Wether Dam that has gained more than five (5) pounds from the weight listed on the official showing card will be disqualified and the placing of all animals will be moved up.
6. The use of hydration utensils and the use of soft muzzles are permitted in the stalls only. Soft muzzles must be removed from the goats any time they are taken from their stall. Failure to use hydration utensils and soft muzzles in the stalls will constitute disqualification.
7. Market Wether Dams must be sheared to a maximum of 3/8" residual hair length.
8. Market Wethers Dams may be braced. The animals must have all four (4) feet on the ground.
9. Dehorning of goats at this show is not suggested; however, horns should be tipped and rounded. Goats with horns sharper than deemed safe by the show superintendent or OSF staff will be required to be tipped or rounded or isolated and not shown.

CLASSES

- Broken by weight after check-in.

AWARDS / PREMIUM INFORMATION

- Ribbons will be awarded to the top 10 in each class (excluding championship classes)

AWARD	1 st	2 nd	3 rd	4 th	5 th	6 th	7 th	8 th
*Individual Class Premiums	\$60	\$50	\$40	\$30	\$30	\$30	\$30	\$30
Division Champions	Rosette	Rosette						
Overall Grand Champions	\$250, Banner & Award	\$150 & Banner						

***All classes with one/single entry (entered, shown, and judged) will be eligible for the class entry/per head fee (only) as premium whenever a premium is indicated.**





JUNIOR PROSPECT DOES (DIVISION 1303)

Superintendent: Tara Martin & Haley Merhoff



Entry Deadline: August 25 (*Late fees apply after the deadline.*)

May Start Arriving: September 11 @ Noon

Animals in Place: September 13 @ 1 p.m.

Check-In/Cards Due: September 14 @ 3 p.m.

Judged in Barn 1 Arena: September 15 @ 9 a.m.

Released: After completion of showing



*2023 Grand Champion
Prospect Doe
owned by Maverick Huff*

Refer to the Rules and Regulations sections for important information including animal health requirements, liability agreement, additional fees, admissions, deadlines, etc.

Junior Market Goat shows will be NO FIT, meaning blow and show only. No paint or glue allowed.

ADDITIONAL RULES

1. An exhibitor may show a maximum of three (3) Prospect Does.
2. Any breed or combination of breeds can be shown. Does not have to be registered to be shown.
3. A scrapie tag, official breed registry tattoo or microchip (only if the animal is accompanied by a registration certificate) will be required on all animals.
4. There is a minimum weight of 40 pounds and maximum weight of 160 pounds.
5. There will be no official weigh-in. Scales will be available for weighing. The exhibitor will check in via the self-check-in system.
6. Upon completion of each class, the superintendent will weigh a minimum of the top five (5) Prospect Does. Any Prospect Doe that has gained more than five (5) pounds from the weight listed on the official showing card will be disqualified and the placing of all animals will be moved up.
7. The use of hydration utensils and the use of soft muzzles are permitted in the stalls only. Soft muzzles must be removed from the goats any time they are taken from their stall. Failure to use hydration utensils and soft muzzles in the stalls will constitute disqualification.
8. Length of hair is left up to the discretion of the exhibitor.
9. Bracing of animals will not be tolerated and will result in dismissal by the judge or superintendent. The animals must have all four (4) feet on the ground. Exhibitors can only transiently touch the animal with their body. Exhibitors cannot use the collar to make the animal tense their muscles. Any violation will result in dismissal.
10. Dehorning of goats at this show is not suggested; however, horns should be tipped and rounded. Goats with horns sharper than deemed safe by the show superintendent or fair staff will be required to be tipped or rounded or isolated and not shown.

CLASSES

- Broken by weight after check-in.

AWARDS / PREMIUM INFORMATION

- Ribbons will be awarded to the top 10 in each class (excluding championship classes)

AWARD	1 st	2 nd	3 rd	4 th	5 th	6 th	7 th	8 th
*Individual Class Premiums	\$60	\$50	\$40	\$30	\$30	\$30	\$30	\$30
Division Champions	Rosette	Rosette						
Overall Grand Champions	\$750, Banner & Award	\$500 & Banner	\$300 & Banner	\$200 & Banner	\$100 & Banner			

***All classes with one/single entry (entered, shown, and judged) will be eligible for the class entry/per head fee (only) as premium whenever a premium is indicated.**



Entry Deadline: August 25 (*Late fees apply after the deadline.*)

May Start Arriving: September 19 @ 6 p.m.

Animals in Place: September 20 @ 4 p.m.

Check-In: September 20 @ 1 – 6 p.m.

Judged in Barn 1 Arena:

Day 1: September 21 following 30 minutes after the Open Commercial Breeding Doe Show

Day 2: September 22 @ 8:30 a.m.

Released: After completion of showing



*2023 Grand Champion Fullblood Buck
(Day 2)
TKG B TROUBLESHOOTER
owned by Piper Fisher*

Sanctions/Associations: An officially sanctioned show of the American Boer Goat Association (ABGA).

Refer to the Rules and Regulations sections for important information including animal health requirements, liability agreement, additional fees, admissions, deadlines, etc.

ADDITIONAL RULES

1. All entries are subject to the rules and regulations of the Oklahoma State Fair and the ABGA.
2. A registration certificate from one (1) of the following associations is required for each animal entered: ABGA, U.S. Boer Goat Association or Canadian Boer Goat Association
3. A stamped duplicate or faxed duplicate registration application showing the date received by the association is acceptable only for animals under 3 months of age.
4. Proof of ownership shall be the name on the registration certificate. Persons showing animals whose registration certificates have signed transfers that have not been processed by the breed association office must show those animals as an agent for the owner on placings sent to the breed association.
5. Goats must have legible tattoos that match the tattoo shown on the registration papers. This will also fulfill the identification requirements of the Oklahoma Scrapie Program. Tattoos will be examined at check-in and then verified in the ring, as appropriate.
6. An animal may be judged in only one (1) age class. Proof of birth date will be the date on the registration certificate. The base date for computing the age of the animal shall be the date of the show.
7. A senior buck must have offspring resulting from live coverage; a senior doe must have offspring resulting from natural birth.
8. Premier Exhibitor will be the exhibitor (determined by SSN on entry) winning the most money on eight (8) animals exhibited by exhibitor in the non-group classes.
9. Oklahoma Premier Breeder will be the breeder (determined by tattoo prefix in ear and Oklahoma address with registry) winning the most money on eight (8) animals exhibited in non-group classes.



PERCENTAGE DOE CLASSES						
Class		Birth Date Range Division 1502: Day 1		Birth Date Range Division 1504: Day 2		Awards
		Start Date	End Date	Start Date	End Date	
		Junior Division				
01.	Doe Kids 0 to under 3 mos	6/22/24	9/21/24	6/23/24	9/22/24	A
02.	Doe Kids 3 to under 6 mos	3/22/24	6/21/24	3/23/24	6/22/24	A
03.	Doe Kids 6 to under 9 mos	12/22/23	3/21/24	12/23/23	3/22/24	A
04.	Doe Kids 9 to under 12 mos	9/22/23	12/21/23	9/23/23	12/22/23	A
05.	Champion and Reserve Junior Percentage Doe Kid					B
Yearling Division						
06.	Does 12 to under 16 mos	5/22/23	9/21/23	5/23/23	9/22/23	A
07.	Does 16 to under 20 mos	1/22/23	5/21/23	1/23/23	5/22/23	A
08.	Does 20 to under 24 mos	9/22/22	1/21/23	9/23/22	1/22/23	A
09.	Champion and Reserve Yearling Percentage Doe					B
Senior Division						
10.	Does 24 to under 36 mos	9/22/21	9/21/22	9/23/21	9/22/22	A
11.	Does 36 mos and over	n/a	9/21/21	n/a	9/22/21	A
12.	Champion and Reserve Senior Percentage Doe					B
13.	Grand Champion and Reserve Percentage Doe					C

FULLBLOOD DOE CLASSES						
Class		Birth Date Range Division 1502: Day 1		Birth Date Range Division 1504: Day 2		Awards
		Start Date	End Date	Start Date	End Date	
		Junior Division				
16.	Doe Kids 0 to under 3 mos	6/22/24	9/21/24	6/23/24	9/22/24	A
17.	Doe Kids 3 to under 6 mos	3/22/24	6/21/24	3/23/24	6/22/24	A
18.	Doe Kids 6 to under 9 mos	12/22/23	3/21/24	12/23/23	3/22/24	A
19.	Doe Kids 9 to under 12 mos	9/22/23	12/21/23	9/23/23	12/22/23	A
20.	Champion and Reserve Junior Fullblood Doe Kid					B
Yearling Division						
21.	Does 12 to under 16 mos	5/22/23	9/21/23	5/23/23	9/22/23	A
22.	Does 16 to under 20 mos	1/22/23	5/21/23	1/23/23	5/22/23	A
23.	Does 20 to under 24 mos	9/22/22	1/21/23	9/23/22	1/22/23	A
24.	Champion and Reserve Yearling Fullblood Doe					B
Senior Division						
25.	Does 24 to under 36 mos	9/22/21	9/21/22	9/23/21	9/22/22	A
26.	Does 36 mos and over	n/a	9/21/21	n/a	9/22/21	A
27.	Champion and Reserve Senior Fullblood Doe					B
28.	Grand Champion and Reserve Fullblood Doe					C



FULLBLOOD BUCKS						
Class	Birth Date Range		Birth Date Range		Awards	
	Division 1502: Day 1		Division 1504: Day 2			
	Start Date	End Date	Start Date	End Date		
Junior Division						
29.	Buck Kids 0 to under 3 mos	6/22/24	9/21/24	6/23/24	9/22/24	A
30.	Buck Kids 3 to under 6 mos	3/22/24	6/21/24	3/23/24	6/22/24	A
31.	Buck Kids 6 to under 9 mos	12/22/23	3/21/24	12/23/23	3/22/23	A
32.	Buck Kids 9 to under 12 mos	9/22/23	12/21/23	9/23/23	12/22/23	A
33.	Champion and Reserve Junior Fullblood Buck Kid					B
Yearling Division						
34.	Bucks 12 to under 16 mos	5/22/23	9/21/23	5/23/23	9/22/23	A
35.	Bucks 16 to under 20 mos	1/22/23	5/21/23	1/23/23	5/22/23	A
36.	Bucks 20 to under 24 mos	9/22/22	1/21/23	9/23/22	1/22/23	A
37.	Champion and Reserve Yearling Fullblood Buck					B
Senior Division						
38.	Bucks 24 to under 36 mos	9/22/21	9/21/22	9/23/21	9/22/22	A
39.	Bucks 36 and over	n/a	9/21/21	n/a	9/22/21	A
40.	Champion and Reserve Senior Fullblood Buck					B
41.	Grand Champion and Reserve Fullblood Buck					C

GROUP CLASSES			AWARDS
DIVISIONS 1503 (Day1) & 1505 (Day 2)			
01.	*Best Pair of Kids, both sexes represented		B/D
02.	*Best Pair of Females		B/D
03.	*Breeders Herd: One Buck any age, two Does (yearling or older) and two Doe Kids		D

PREMIER AWARDS	AWARDS
Premier Exhibitor Award	E
Oklahoma Premier Breeder Award	E

AWARD/PREMIUM INFORMATION

- Ribbons will be awarded to the top 10 in each class, except championship classes.

AWARD	1st	2nd	3rd	4th
*A	\$40	\$30	\$20	\$15
B	Rosette	Rosette		
C	Banner & Award	Banner		
*D	\$20	\$15	\$10	
E	Banner			

***All classes with one/single entry (entered, shown, and judged) will be eligible for the class entry/per head fee (only) as premium whenever a premium is indicated.**

OPEN COMMERCIAL BREEDING DOES (DIVISION 1500)

Superintendent: Robin Graham

Entry Deadline: August 25 (*Late fees apply after the deadline.*)

May Start Arriving: September 19 @ 6 p.m.

Animals in Place: September 20 @ 4 p.m.

Check-In: September 20 @ 1 – 6 p.m.

Judged in Barn 1 Arena: September 21 @ 8 a.m.

Released: After completion of showing



*2023 Grand and Reserve Champion
Commercial Breeding Does
owned by Russell Southerland*

Refer to the Rules and Regulations sections for important information including animal health requirements, liability agreement, additional fees, admissions, deadlines, etc.

ADDITIONAL RULES

1. The purpose of this show is to exhibit commercial breeding stock.
2. Divisions are based on age and determined by teeth.
3. Classes will be broken by weight. The number of classes in each division will be determined by the number of entries in each division.
4. The top two (2) animals from each class will move forward to the division champion drive.
5. The first and second place doe from each division will move into the overall drive. Two animals will be selected in the Overall Champion Drive for Grand and Reserve Overall Commercial Breeding Doe.
6. Fitting is allowed and is at the discretion of the showman. Adding “hair” by the use of foreign material will not be allowed and may disqualify the animal.
7. No animal participating in the commercial show may participate in the ABGA shows.
8. Commercial animals are required to have a scrapie tag.
9. If a tooth is missing, then the animal will be moved to the next division.

CLASSES

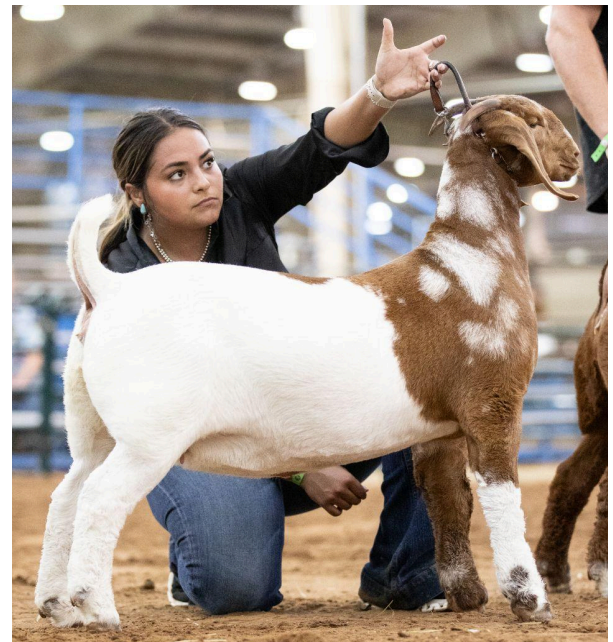
CLASSES		AWARDS
01.	Division 1 – Milk Teeth	A
02.	Division 1 Champion and Reserve Champion	B
03.	Division 2 – Two Teeth	A
04.	Division 2 Champion and Reserve Champion	B
05.	Division 3 – Four Teeth	A
06.	Division 3 Champion and Reserve Champion	B
07.	Overall and Reserve Champion Commercial Breeding Doe	C

AWARD/PREMIUM INFORMATION

- Ribbons will be awarded to the top 5 in each class, except championship classes.

AWARD	1 st	2 nd	3 rd	4 th
*A	\$40	\$30	\$20	\$15
B	Rosette	Rosette		
C	Banner & Award	Banner		

*All classes with one/single entry (entered, shown, and judged) will be eligible for the class entry/per head fee (only) as premium whenever a premium is indicated.



Entry Deadline: August 25 (*Late fees apply after the deadline.*)

May Start Arriving: September 16 @ Noon

Animals in Place: September 16 @ 6 p.m.

Check-In: Upon arrival

Judged in Barn 1 Arena:

Junior Goats: September 17 @ 8:30 a.m.

Senior Goats: September 18 @ 8:30 a.m.

Released: After completion of showing



*2023 Best Jr. Doe of Show
ABACA LSMM DELTA DAWN
Owned by Addison Motes*

Refer to the Rules and Regulations sections for important information including animal health requirements, liability agreement, additional fees, admissions, deadlines, etc.

ADDITIONAL RULES

1. The rules and regulations of the OSF and the American Dairy Goat Association (ADGA) will govern this show.
2. Tattoos of all winners will be checked for verification. If tattoos do not match those on the registration papers, premium money will be forfeited.
3. Registration and Recordation Certificates:
 - a. Only goats registered with ADGA, AGS or CGS are eligible to compete. Those goats who have applied for registration with the above organizations may also compete.
 - b. No copies of the registration/recordation certificate or the stamped duplicate application shall be accepted by show officials.
 - c. Proof of ownership shall be the name on the registration, recordation certificate or stamped duplicate application.
 - d. Information obtained from the ADGA office via telephone, email, fax, etc. will not be accepted in lieu of the documents specified above.
4. The base date for computing the age of the animals is **September 17/18**, the date the animal is to be judged.
5. In all classes, an exhibitor is the owner of the animal as evidenced by the name on the registration or recordation certificate or on the stamped duplicate application.
6. There will not be a pre-show milk out. Each exhibitor is encouraged not to over udder their animals.
7. Exhibitors are requested to be neatly and appropriately attired in white when showing their animals in the ring.
8. All goats in the 4-H/FFA show must be registered in the member's name.
9. There will be a Junior Grand Champion, Reserve Junior Grand Champion, Senior Grand Champion and Reserve Senior Grand Champion picked in each breed.
10. Show order will be Showmanship (Tuesday only), Junior Dairy Goats (Tuesday) and Senior Dairy Goats (Wednesday).



SHOW OVERVIEW

- This is NOT a sanctioned show of the ADGA.
- Available for any youth 4-H or FFA member under 18 years of age as of January 1 of the current year.
- An exhibitor may enter and exhibit their entry in both Ring A and Ring B. There is a \$20 entry fee per head/show. Example: An Alpine Dairy Goat born May 15 of the current year may be shown on Ring A, Class 01 AND ring B, Class 01. These entries would incur a total charge of \$40.
- Youth exhibitors are allowed, and encouraged, to show in Open Dairy Goat divisions.

CLASSES

- Show order may be changed at the OSF management's discretion.
- **TO MAKE A NEW BREED SHOW:** Breeds in the AOB division having ten (10) or more entries for two consecutive years will have their own breed show division the following year.
- **MAINTAINING A BREED SHOW:** Breed shows having less than ten (10) entries for two consecutive years will show in AOB division, if applicable, the following year. If an AOB division is not in the show, one will be created or the breed may be removed from the Livestock Show, unless the show is sanctioned and requires the breed class to be offered.
- Showmanship is open to Youth Dairy Goat exhibitors only. (See [Junior/Youth Showmanship Division information](#)).

Junior Dairy Goats
Day 1: September 17, 2024
Showmanship

Senior Dairy Goats
Day 2: September 18, 2024

Junior Dairy Goats (Classes 1-6)		Senior Dairy Goats (Classes 7-13)	
1520	Alpine (Ring A)	1520	Alpine (Ring A)
1521	Alpine (Ring B)	1521	Alpine (Ring B)
1522	Lamancha (Ring A)	1522	Lamancha (Ring A)
1523	Lamancha (Ring B)	1523	Lamancha (Ring B)
1524	Nigerian Dwarf (Ring A)	1524	Nigerian Dwarf (Ring A)
1525	Nigerian Dwarf (Ring B)	1525	Nigerian Dwarf (Ring B)
1526	Nubian (Ring A)	1526	Nubian (Ring A)
1527	Nubian (Ring B)	1527	Nubian (Ring B)
1528	Oberhasli (Ring A)	1528	Oberhasli (Ring A)
1529	Oberhasli (Ring B)	1529	Oberhasli (Ring B)
1530	Recorded (Ring A)	1530	Recorded (Ring A)
1531	Recorded (Ring B)	1531	Recorded (Ring B)
1532	Saanen (Ring A)	1532	Saanen (Ring A)
1533	Saanen (Ring B)	1533	Saanen (Ring B)
1534	Sable (Ring A)	1534	Sable (Ring A)
1535	Sable (Ring B)	1535	Sable (Ring B)
1536	Toggenburg (Ring A)	1536	Toggenburg (Ring A)
1537	Toggenburg (Ring B)	1537	Toggenburg (Ring B)

JUNIOR DAIRY GOAT CLASSES		AWARDS
Day 1 Ring A (Even #'d Divisions)	Day 1 Ring B (Odd #'d Divisions)	
01.	Junior Kid, May 2024 to September 2024	A
02.	Intermediate Kid, April 2024	A
03.	Senior Kid, March 2024	A
04.	Junior Yearling, December 2023 to February 2024	A
05.	Senior Yearling, under 24 months as of November 2022	A
06.	Champion and Reserve Junior Doe	B

SENIOR DAIRY GOATS CLASSES		AWARDS
Day 2 Ring A (Even #'d Divisions)	Day 2 Ring B (Odd #'d Divisions)	
07.	Does, under 2 years, having freshened	A
08.	Does, 2 years to under 3 years	A

09.	Does 3 years to under 4 years	A
10.	Does, 4 years to under 5 years	A
11.	Does, over 5 years	A
12.	Champion and Reserve Senior Doe	B
13.	Best Udder of Each Breed – Judge will pick one doe from each class	B

CHAMPIONSHIP CLASSES		AWARDS
Day 2 Ring A (Division 1538)	Day 2 Ring B (Division 1539)	
01.	Best Junior Doe of Show – to be selected from the Junior Grand Champion Doe of each breed.	C
02.	Best Senior Doe of Show – to be selected from the Best of Breed of each breed.	C
03.	Best Udder of the Show – to be selected from the Best Udder of Breed of each breed.	D

AWARD/PREMIUM INFORMATION

- Ribbons will be awarded to the top 10 in each class, except championship classes.

AWARD	1 st	2 nd	3 rd	4 th
*A	\$30	\$20	\$15	\$10
B	Rosette	Rosette		
C	Banner & Award			
D	Banner & Medallion			

***All classes with one/single entry (entered, shown, and judged) will be eligible for the class entry/per head fee (only) as premium whenever a premium is indicated.**



Entry Deadline: August 25 (*Late fees apply after the deadline.*)

May Start Arriving: September 16 @ Noon

Animals in Place: September 16 @ 6 p.m.

Check-In: Upon arrival

Judged in Barn 1 Arena:

Junior Goats: September 17, following Youth Dairy Goats

Senior Goats: September 18, following Youth Dairy Goats

Released: After completion of showing



*2023 Best Jr. Doe of Show
SUNDOWN FARM Z TRIXIE
owned by Lisa Odwyer*

Sanctions/Associations: PENDING - An officially sanctioned show of the American Dairy Goat Association.

Refer to the Rules and Regulations sections for important information including animal health requirements, liability agreement, additional fees, admissions, deadlines, etc.

ADDITIONAL RULES

1. The rules and regulations of the OSF and American Dairy Goat Association (ADGA) will govern this show. We reserve the right to change the show order for the show to run smoother.
2. Tattoos of all Grand, Reserve and Best of Breed winners will be checked for verification. If tattoos do not match those on the registration papers, premium money will be forfeited.
3. Registration and Recordation Certificates:
 - a. Only goats registered with ADGA, AGS or CGS are eligible to compete. Those goats who have applied for registration with the above organizations may also compete.
 - b. No copies of the registration/recordation certificate or the stamped duplicate application shall be accepted by show officials.
 - c. Proof of ownership shall be the name on the registration, recordation certificate or stamped duplicate application.
 - d. Information obtained from the ADGA office via telephone, email, fax, etc. will not be accepted in lieu of the documents specified above.
4. The base date for computing the age of the animals is **September 17/18**, the date the animal is to be judged.
5. In all classes, an exhibitor is the owner of the animal as evidenced by the name on the registration or recordation certificate or on the stamped duplicate application.
6. All group classes of a breed must be made up of only those animals that have been shown in those individual classes of that breed in this show and must be entered on the official entry form.
7. There will not be a pre-show milk out. Each exhibitor is encouraged not to over udder their animals.
8. Exhibitors are requested to be neatly and appropriately attired in white when showing their animals in the ring.
9. There will be a: Junior Grand Champion, Reserve Junior Grand Champion, Senior Grand Champion, Reserve Senior Grand Champion and Senior Best of Breed picked in each breed. A Herdsman Award will be given daily.
10. Show will begin promptly after the Youth Dairy Goat Show each day, Junior Dairy Goats (Tuesday) and Senior Dairy Goats (Wednesday). The Open show is separately sanctioned.



SHOW OVERVIEW

- These shows are available for any exhibitor.
- An exhibitor may enter and exhibit their entry in both Ring A and Ring B with a \$20 entry fee per show. Example: An Alpine Dairy Goat born May 15 of the current year may be shown in Ring A, Class 01 AND in Ring B, Class 01. These entries would incur a total charge of \$40.
- In order to enter group classes, each animal must be exhibited in an individual class in the same breed and show.
- Show order may be changed at the discretion of OSF management.
- **TO MAKE A NEW BREED SHOW:** Breeds in the AOB division having ten (10) or more entries for two consecutive years will have their own breed show division the following year.
- **MAINTAINING A BREED SHOW:** Breed shows having less than ten (10) entries for two consecutive years will show in AOB division, if applicable, the following year. If an AOB division is not in the show, one will be created or the breed may be removed from the Livestock Show, unless the show is sanctioned and requires the breed class to be offered.

Day 1: September 17, 2024

Junior Dairy Goats (Classes 1-9)

1540	Alpine (Ring A)
1541	Alpine (Ring B)
1542	Lamancha (Ring A)
1543	Lamancha (Ring B)
1544	Nigerian Dwarf (Ring A)
1545	Nigerian Dwarf (Ring B)
1546	Nubian (Ring A)
1547	Nubian (Ring B)
1548	Recorded (Ring A)
1549	Recorded (Ring B)
1550	Saanen (Ring A)
1551	Saanen (Ring B)
1552	Toggenburg (Ring A)
1553	Toggenburg (Ring B)
1554	AOP (Ring A) (<i>Guernsey, Oberhasli, Sable</i>)
1555	AOP (Ring B) (<i>Guernsey, Oberhasli, Sable</i>)

Day 2: September 18, 2024

Senior Dairy Goats (Classes 10-22)

1540	Alpine (Ring A)
1541	Alpine (Ring B)
1542	Lamancha (Ring A)
1543	Lamancha (Ring B)
1544	Nigerian Dwarf (Ring A)
1545	Nigerian Dwarf (Ring B)
1546	Nubian (Ring A)
1547	Nubian (Ring B)
1548	Recorded (Ring A)
1549	Recorded (Ring B)
1550	Saanen (Ring A)
1551	Saanen (Ring B)
1552	Toggenburg (Ring A)
1553	Toggenburg (Ring B)
1554	AOP (Ring A) (<i>Guernsey, Oberhasli, Sable</i>)
1555	AOP (Ring B) (<i>Guernsey, Oberhasli, Sable</i>)

JUNIOR DAIRY GOAT CLASSES		AWARDS
Day 1 Ring A (Even #'d Divisions)	Day 1 Ring B (Odd #'d Divisions)	
Individual Classes		
01.	Junior Kid, May 2024 to September	A
02.	Intermediate Kid, April 2024	A
03.	Senior Kid, March 2024	A
04.	Junior Yearling, December 2023 to February 2024	A
05.	Senior Yearling, under 24 months as of November 2022	A
06.	Champion and Reserve Junior Doe	B
Group Classes		
01.	Junior Get of Sire – to consist of three Jr Does, the Get-of-sire. Sire must be named. Exhibitor limited to one entry by the same buck.	C
02.	Junior Produce of Dam – to consist of two Jr Does, the produce of one dam. Dam must be named. Exhibitor limited to one entry by the same dam.	C
03.	Best Three Junior Females – to consist of three Jr Does, all bred and owned by one exhibitor. Exhibitor limited to one entry.	C



SENIOR DAIRY GOATS CLASSES		AWARDS
Day 2 Ring A (Even #'d Divisions)		Day 2 Ring B (Odd #'d Divisions)
Individual Classes		
07.	Does, under 2 years, having freshened	A
08.	Does, 2 years to under 3 years	A
09.	Does 3 years to under 4 years	A
10.	Does, 4 years to under 5 years	A
11.	Does, over 5 years	A
12.	Champion and Reserve Senior Doe	B
13.	Champion Challenge: In this class, Does that are permanent champions will challenge the Grand Champion for Best of Breed. (Regular entry fee applies)	D
14.	Best Udder of Each Breed – Judge will pick one doe from each class	B
Group Classes		
04.	Milking Dam and daughter: daughter must be milking.	C
05.	Senior Produce of Dam: to consist of two senior does from the same dam. Dam must be named. One entry from each dam per exhibitor.	C
06.	Senior Get-of-Sire: to consist of three does from the senior division. Sire must be named. One entry from each sire per exhibitor.	C
07.	Senior Best Three Females: three does from the senior division, all bred and owned by exhibitor.	C
08.	Senior Dairy Herd: four does from the senior division owned by exhibitor.	C

CHAMPIONSHIP CLASSES		AWARDS
Day 2 Ring A (Division 1557)		Day 2 Ring B (Division 1558)
01.	Best Junior Doe of Show – to be selected from the Junior Grand Champion Doe of each breed.	E
02.	Best Senior Doe of Show – to be selected from the Best of Breed of each breed.	E
03.	Best Udder of the Show – to be selected from the Best Udder of Breed of each breed.	F

AWARD/PREMIUM INFORMATION

- Ribbons will be awarded to the top 10 in each class, except championship classes.

AWARD	1st	2nd	3rd	4th
*A	\$30	\$20	\$15	\$10
B	Rosette	Rosette		
*C	\$20	\$15	\$10	
D	\$30 & Award	\$20	\$15	\$10
E	Banner & Award			
F	Banner & Medallion			

*All classes with one/single entry (entered, shown, and judged) will be eligible for the class entry/per head fee (only) as premium whenever a premium is indicated.

PREMIER BREEDER AND PREMIER EXHIBITOR

- This will be based on a point system with your top 6 placing.
- Point System will be as follows:
 - Senior Does
 - First Place: 20 points Second Place: 15 points Third Place: 10 points Fourth Place: 5 points
 - Junior Does
 - First Place: 15 points Second Place: 10 points Third Place: 7 points Fourth Place: 5 points

OPEN MINI SILKY GOAT SHOWS (DIVISIONS 1511 – 1519) 8 SHOWS + SHOWMANSHIP



Superintendent:
Dawn Broaddrick
bigskyfarm@atlasok.com
6380 S 4060 Rd, Talala OK 74080



Entry Deadline: August 25 (*Late fees apply after deadline.*)

May Start Arriving: September 19 @ Noon

Animals in Place: September 20 @ 4 p.m.

Check-In: September 20 @ 4 p.m. – 5 p.m.

Judged in Barn 1 Arena:

Showmanship: September 20 @ 7 p.m.

Show A/B/C: September 21 @ 9 a.m.

Show D/E/F: September 21 @ 2 p.m.

Show G&H: September 22 @ 10 a.m.



*2023 Best in Show (Show A, B, E, G & H)
Hobby Hills Heavenly
owned by Annie Costanzo*

Released: After completion of showing

Sanctioning: An officially sanctioned show with the Miniature Silky Fainting Goat Association (MSFGA), except for showmanship.

Refer to the Rules and Regulations sections for important information including animal health requirements, liability agreement, additional fees, admissions, deadlines, etc.

ADDITIONAL RULES

1. All entries are subject to the rules and regulations of the OSF and the MSFGA.
2. All entries must be registered with MSFGA. A copy of the registration certificate for each goat must be sent via email or mail to the Dawn Broaddrick prior to the show.
3. The base date for computing the age of the animal shall be the day the animal is to be judged.
4. Showmanship Classes #1-4: Entry is free. All exhibitors and animals entered into showmanship must be duly entered in an individual class in the OK State Fair Mini Silky Fainting Goat Show.
 - a. Showmanship age is as of the date of the show.
 - b. Class #4: Participant does not need to own the animal shown but is responsible for finding an animal entered into the show and necessary equipment to use.
5. Show order in each show, excluding showmanship, will be as follows: Junior Does, Senior Does, Junior Bucks, Senior Bucks, Best in Show, Wethers, and Best Wether in Show.



SHOWMANSHIP CLASSES (September 20 th only)		AWARDS
01.	Adult (ages 19 and over)	A
02.	Senior Intermediate (ages 15 to 18)	A
03.	Junior Intermediate (ages 10 to 14)	A
04.	Pee-Wee (ages 9 and under)	

REGISTER FOR SHOWMANSHIP HERE!

(Registration opens August 1st)

<https://forms.gle/tRt5RrV73w3BZj2G9>



Shows A – H (Divisions 1511-1519)

DOE CLASSES				
Class		Class Birthdate Range Day 1 – Sept. 21	Class Birthdate Range Day 2 – Sept. 22	Awards
01.	Birth up to 6 months	3/21/24 - 9/21/24	3/22/24 - 9/22/24	B
02.	Over 6 months to 12 months	9/21/23 - 3/20/24	9/22/23 - 3/21/24	B
03.	Over 12 months to 18 months	3/21/23 - 9/20/23	3/22/23 - 9/21/23	B
04.	Over 18 months to 24 months	9/21/22 - 3/20/23	9/22/22 - 3/21/23	B
05.	Grand Champion and Reserve Junior Doe			C
06.	Over 24 months to 36 months	9/21/21 - 9/20/22	9/22/21 - 9/21/22	B
07.	Over 36 months	9/20/21 and prior	9/21/21 and prior	B
08.	Grand Champion and Reserve Senior Doe			C

BUCK CLASSES				
Class		Class Birthdate Range Day 1 – Sept. 21	Class Birthdate Range Day 2 – Sept. 22	Awards
09.	Birth up to 6 months	3/21/24 - 9/21/24	3/22/24 - 9/22/24	B
10.	Over 6 months to 12 months	9/21/23 - 3/20/24	9/22/23 - 3/21/24	B
11.	Over 12 months to 18 months	3/21/23 - 9/20/23	3/22/23 - 9/21/23	B
12.	Over 18 months to 24 months	9/21/22 - 3/20/23	9/22/22 - 3/21/23	B
13.	Grand Champion and Reserve Junior Buck			C
14.	Over 24 months to 36 months	9/21/21 - 9/20/22	9/22/21 - 9/21/22	B
15.	Over 36 months	9/20/21 and prior	9/21/21 and prior	B
16.	Grand Champion and Reserve Senior Buck			C

BEST IN SHOW CLASS		
Class		Awards
17.	Best in Show – Master champions compete with Grand Champion Does and Bucks	D

WETHER CLASSES				
Class		Class Birthdate Range Day 1 – Sept. 21	Class Birthdate Range Day 2 – Sept. 22	Awards
18.	Under 12 months	9/22/23 - 9/21/24	9/23/23 - 9/22/24	B
19.	Over 12 months	9/21/23 and prior	9/22/23 and prior	B
20.	Best Wether in Show			D

AWARD/PREMIUM INFORMATION

- Ribbons will be awarded to the top 4 in each class, excluding championship classes and Best in Show classes.
- Each Pee Wee class participant will be given a participation ribbon.

AWARD	1 st	2 nd
A	Award	
B	Sliding premium scale (see below)	
C	Rosette	Rosette
D	Banner & Award	

*SLIDING PREMIUM SCALE	1 st	2 nd	3 rd	4 th
2 – 4 head	\$20	\$5		
5 – 7 head	\$25	\$10	\$5	
8 – 10 head	\$25	\$20	\$10	\$5
11 head +	\$30	\$25	\$15	\$10

***All classes with one/single entry (entered, shown, and judged) will be eligible for the class entry/per head fee (only) as premium whenever a premium is indicated.**





OPEN PYGMY GOATS (DIVISIONS 1507 - 1510)

Show A (Div. 1507/1508) – Show B (Div. 1509/1510)

Superintendent: Rebecca Zimmerman



Entry Deadline: August 25 (*Late fees apply after deadline.*)

May Start Arriving: September 14 @ 8 a.m.

Animals in Place: September 15 @ 9 p.m.

Check-In: September 15 @ 2 – 6 p.m.
September 16 @ 8 – 8:30 a.m.

Judged in Barn 1 Arena: September 16 @ 9 a.m.; starting with Show A and following with Show B

Released: After completion of showing



2023 Grand Champion Wether (Show A & B)
TWILIGHT VALLEY WHITE LEGS MATTER
owned by Rebecca Zimmerman

Sanctions/Associations: An officially sanctioned show of the National Pygmy Goat Association (NPGA).

Refer to the Rules and Regulations sections for important information including animal health requirements, liability agreement, additional fees, admissions, deadlines, etc.

ADDITIONAL RULES

1. All entries are subject to the rules and regulations of the OSF and the NPGA.
2. All entries must be registered with the NPGA, except Market Wethers.
3. An NPGA registration certificate is required for any animal entered and the document must be presented to the show secretary before the animal is shown with the exception of Market Wethers.
4. Show officials will accept only original NPGA registration certificates, no copies.
5. Proof of ownership shall be the name on the registration certificate unless ownership has changed within 90 days of the show and a transfer of ownership form is presented with the certificate. In that case, ownership shall be the name on the transfer form.
6. An animal may be judged in only one (1) age class. Proof of age shall be the birth date on the animal's original registration certificate.
7. The base date for computing the age of the animal shall be the day the animal is to be judged unless otherwise stated in the rules governing livestock. This date must be stated on the show application and in the rules. The birth date ranges listed below are those for the Monday shows.
8. Health certificates are required according to the rules of the Oklahoma State Fair. Any animal showing signs of being sick will be isolated and not judged. Any animal with lumps or balding abscesses, sore mouth or pink eye will not be allowed to show or remain at OKCF.
9. Exhibitors are requested to be neatly and appropriately attired when showing their animals in the ring.
10. Show order will be: Showmanship, Market Wethers, Junior Prospect Does, Senior Prospect Does, Junior Buck, Senior Buck, and group classes.

REGISTER FOR SHOWMANSHIP HERE!

(Registration opens August 1st)

<https://forms.gle/tRt5RrV73w3BZj2G9>





SHOWMANSHIP CLASSES (Sign up with the superintendent by 8:30 a.m. morning of the show)		AWARDS
01.	Showmanship: ages 8 and under	E
02.	Showmanship: ages 9 to 17	E
03.	Showmanship: ages 18 and older	E

WETHER CLASSES (Divisions 1507 & 1509)			
	Class	Class Birthdate Range	Awards
04.	Junior Wethers birth to under 6 months	3/17/24 to 9/16/24	A
05.	Intermediate Wethers 6 to under 12 months	9/17/23 to 3/16/24	A
06.	Senior Wethers 1 year and older	n/a to 9/16/23	A
07.	Grand Champion and Reserve Wether		C

DOE CLASSES (Divisions 1507 & 1509)			
	Class	Class Birthdate Range	Awards
08.	Baby Doe Kid birth to under 3 months	6/17/24 to 9/16/24	A
09.	Doe Kids 3 to under 6 months	3/17/24 to 6/16/24	A
10.	Junior Doe Kids 6 to under 9 months	12/17/23 to 3/16/24	A
11.	Intermediate Doe Kids 9 to under 12 months	9/17/23 to 12/16/23	A
12.	Unfreshened Yearling Doe 12 to under 18 months	3/17/23 to 9/16/23	A
13.	Advanced Unfreshened Yearling Doe 18 to under 24 months	9/17/22 to 3/16/23	A
14.	Champion and Reserve Junior Doe		B
15.	Yearling Doe Freshened 18 to under 24 months	9/17/22 to 3/16/23	A
16.	Two-Year-Old	9/17/21 to 9/16/22	A
17.	Three-Year-Old	9/17/20 to 9/16/21	A
18.	Four-Year-Old	9/17/19 to 9/16/20	A
19.	Five-Year-Old and older	n/a to 9/16/19	A
20.	Does in milk – any age		A
21.	Champion and Reserve Senior Doe		B
22.	Grand Champion and Reserve Doe		C

BUCK CLASSES (Divisions 1507 & 1509)			
	Class	Class Birthdate Range	Awards
23.	Baby Buck Kid birth to under 3 months	6/17/24 to 9/16/24	A
24.	Junior Buck Kids 3 to under 6 months	3/17/24 to 6/16/24	A
25.	Intermediate Buck Kids 6 to under 9 months	12/17/23 to 3/16/24	A
26.	Advanced Buck Kids 9 to under 12 months	9/17/23 to 12/16/23	A
27.	Champion and Reserve Junior Buck		B
28.	Junior Yearling Buck 12 to under 18 months	3/17/23 to 9/16/23	A
29.	Senior Yearling Buck 18 to under 24 months	9/17/22 to 3/16/23	A
30.	Two-Year-Old Buck	9/19/20 to 9/18/21	A
31.	Three-Year-Old Buck	9/19/19 to 9/18/20	A
32.	Four-Year-Old Buck	9/19/18 to 9/18/19	A
33.	Five-Year-Old Buck	n/a to 9/18/18	A
34.	Champion and Reserve Senior Buck		B
35.	Grand Champion and Reserve Buck		C



GROUP CLASSES Divisions 1508 (Show A) & 1510 (Show B)		AWARDS
01.	Produce of Dam (Class of 3 Does, all from the same Dam) They will be judged on conformance to the breed standard and consistence of desirable traits. Only one entry from each Dam per exhibitor.	D
02.	Get-of-Sire (Class of 3 Does, all sired by the same buck) Only one entry from each sire per exhibitor.	D
03.	Sire/Son Pair (Class of father/son pairs) Only one entry per exhibitor.	D
04.	Breeder's Trio (Class of 3 Does, all in the exhibitor's herd name) If the animal is in your herd name, you need not be the current owner of the animal. Only one entry per exhibitor.	D

AWARD/PREMIUM INFORMATION

- Ribbons will be awarded to the top 10 in each class, except championship classes.

AWARD	1 st	2 nd	3 rd	4 th
*A	\$30	\$20	\$15	\$10
B	Rosette	Rosette		
C	Banner & Award	Banner		
*D	\$20	\$15	\$10	
E	Award			

***All classes with one/single entry (entered, shown, and judged) will be eligible for the class entry/per head fee (only) as premium whenever a premium is indicated.**