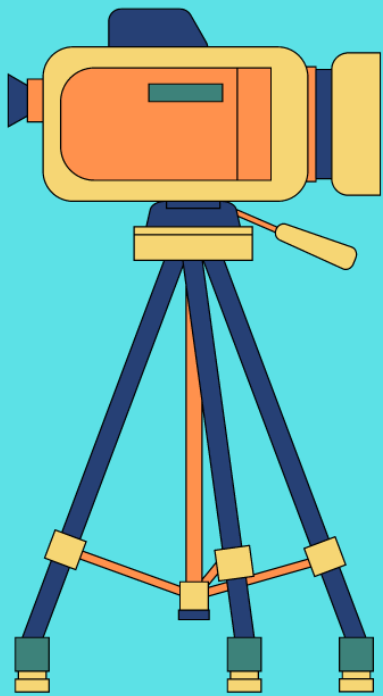




PHOTO- GRAPHY



'24
COMP
GUIDE

FREE REGISTRATION:

July 1 - August 15

Find Your Contests Inside!

okstatefair.com/competitions/creative-arts

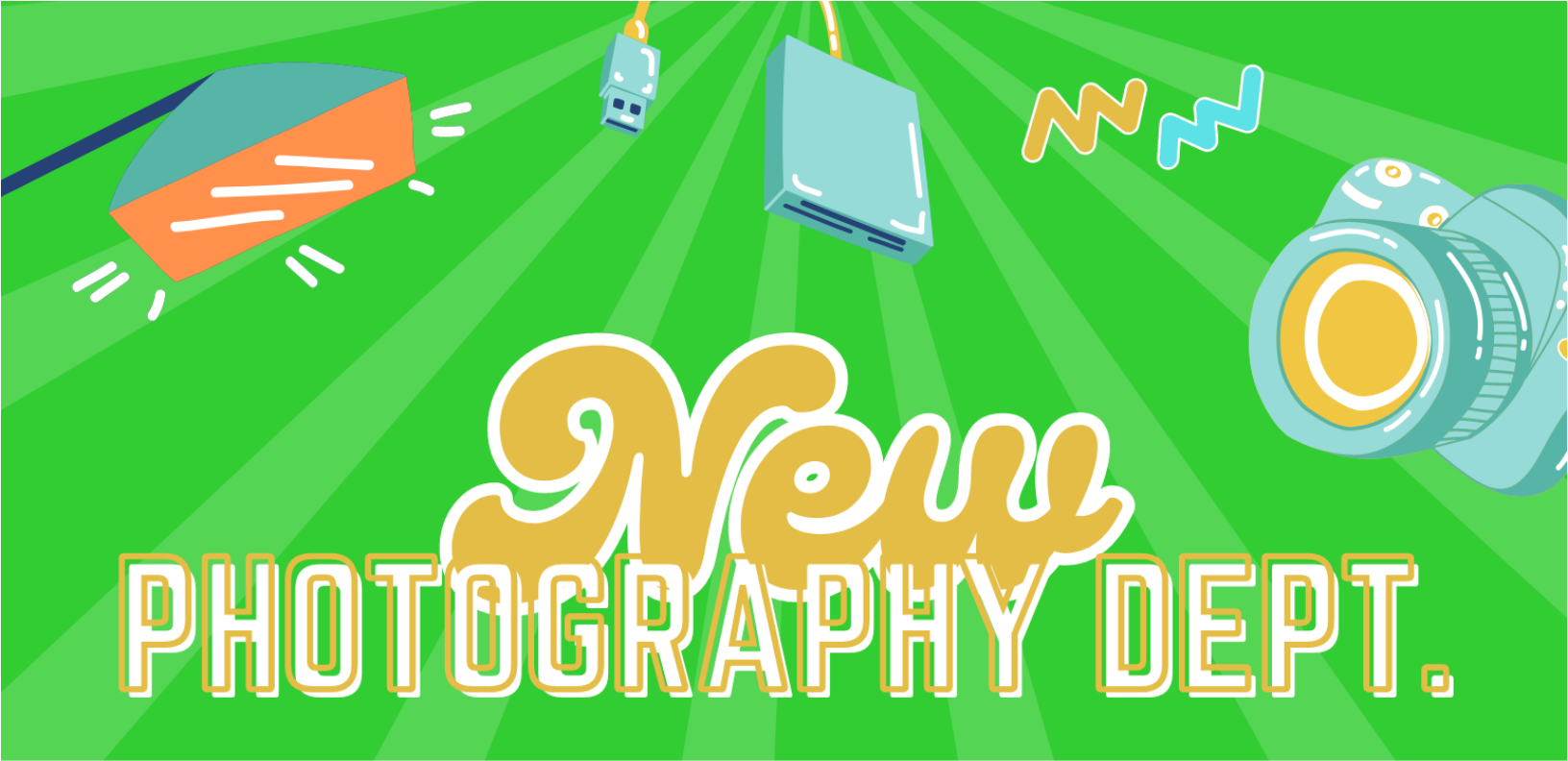


**OKLAHOMA
STATE FAIR**

MISSION STATEMENT

Oklahoma State Fair, Inc. is a 501(c)(3) not-for-profit corporation that serves the people of Oklahoma and is dedicated to continuing the organization's heritage of education, entertainment, and economic development through the operation of the OKC Fairgrounds and the annual Oklahoma State Fair.





TAKE IN WEEKEND - AUG. 24 - 25

NEW ADULT CLASSES (HOLIDAY, PLANES & TRAINS & AUTOMOBILES, PLANTS & TREES)

NEW YOUTH CLASSES (SELFIE & GEOMETRIC)

NEW 'LIVE' CONTEST - DIGITALLY ENHANCED ART (PG. 13)



2024 Creative Arts Program Photography Competition Guide

Table of Contents

Click on each contest to get more information!

Oklahoma State Fair Mission Statement.....	Pg. 2
What's New	Pg. 3
Calendar of Events	Pg. 5
Social Media Info	Pg. 6
Creative Arts Drop-Off, Pick Up & Directions	Pg. 7
Entry Info & Department Regulations	Pg. 8
Preparing Your Photos For Display	Pg. 9

PHOTOGRAPHY DIVISIONS:

ONLINE: Photos from the Fair	Pg. 10
Photography Show (3803).....	Pg. 11
LIVE: Digital Photography Shootout (3804).....	Pg. 12
LIVE: Digitally Edited Photo Contest (3805).....	Pg. 13

STAFF CONTACTS

Carol Bertels
Superintendent
405-706-8878

Morgan Chappell
Creative Programs Manager
CreativePrograms@okstatefair.com
405-948-6731

2024 Creative Arts Quick Reference Guide

Creative Arts registrations must be submitted online.

Starting July 1, [CLICK HERE](#) to register.

Competition Guides

Posted Online:	Saturday, June 1
Registration:	Monday, July 1, 9 a.m. - Thursday, August 15
Deliver Exhibits:	Saturday, August 24 10 a.m. - 4 p.m. Sunday, August 25, 11 a.m. - 4 p.m.
Pick Up Exhibits:	Monday, September 23 2 - 7 p.m. Tuesday, September 24, 9 a.m. - 2 p.m.

Creative Arts Calendar of Events

Schedule for free registration: July 1 at 9 a.m. through August 15

FREE REGISTRATION MUST BE DONE ONLINE. If you do not have computer access, please go to your local library or contact your local OSU Cooperative Extension Services.

Late registration: We will no longer accept late registration, but we will have on-site registration during take-in.

On-site registration: August 24, from 10 a.m. to 4 p.m. and August 25, from 11 a.m. to 4 p.m. Exhibitors will be charged a \$12 fee per exhibitor (not per entry). **Credit or Debit cards will only be accepted.**

Highlighted Below Are 2024 Date Changes. Please be aware.



CALENDAR

- | | |
|--------------------------------|---|
| June 1 | New competition guides posted online. |
| July 1 | Online registration opens at 9 a.m. |
| August 15 | Entry deadline for the Oklahoma State Fair Creative Arts competitions and contests. Free registrations must be received online by August 15. |
| August 16 | We will no longer accept late online registrations, but you will be able to register on site during take-in with a small fee of \$12 per exhibitor. <u>All entries</u> will be turned in on the listed check-in days or on the day of the live contest. |
| August 24 | Entry clerks will receive items at the Creative Arts Building from 10 a.m. to 4 p.m. Late registration will be available to enter with a \$12 late registration fee done electronically. |
| August 25 | Entry clerks will receive items at the Creative Arts Building from 11 a.m. to 4 p.m. Late registration will be available to enter with a \$12 late registration fee done electronically. |
| August 26 - September 9 | All Creative Arts entries judged (excludes live contest entries). This is closed judging. Exhibitors are not permitted to attend. We encourage you to come to the Fair to view results. Judging results will be posted online as soon as they are available, possibly after the end of the State Fair. Do not call or email to ask for results. They cannot be given out prior to posting. |
| September 12 | Oklahoma State Fair opens! The Creative Arts Building will host a series of demonstrations, live contests, and special events every day of the Fair. |
| September 22 | Last day of the Oklahoma State Fair. |
| September 23 | Entry clerks will release exhibits upon presentation of claim check at the Creative Arts Building from 2 to 7 p.m. |
| September 24 | Entry clerks will release exhibits upon presentation of claim check at the Creative Arts Building from 9 a.m. to 2 p.m. Items not picked up become property of the Oklahoma State Fair. |



SHOW US WHAT YOU'RE WORKING WITH

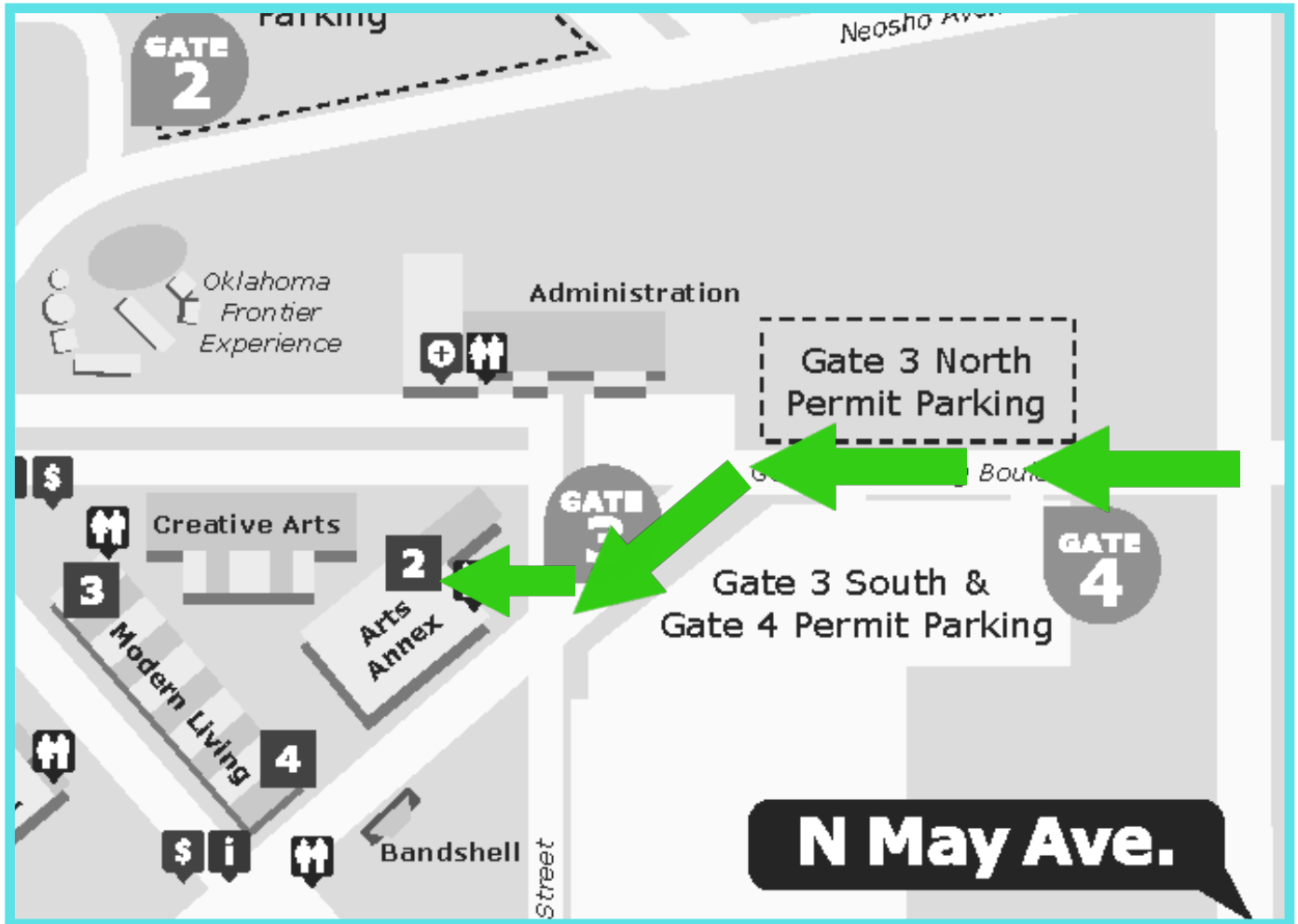


We know sometimes it takes all year to create something magical to enter in the Fair, or just a few days! Share your progress with us! Tag the Fair when you share your creations and ribbons by using #okstatefair!



@okstatefair

Creative Arts Drop-Off & Pick Up Map & Information



How To Get Here: Pre-Fair

Our physical address is 3000 General Pershing Blvd, OKC, OK 73107.

From I-44 take the NW 10th St. eastbound exit and follow until NW 10th St. and May Ave. (2nd light). Turn right onto May Ave. Proceed to Gate 3 (1st light) and drive towards the gate. You will then enter the OKC Fairgrounds and make your way to the Arts Annex.

Drop-Off Information

Drop-off is Saturday, August 24 from 10 a.m. - 4 p.m. and Sunday, August 25 from 11 a.m. - 4 p.m. At check-in you will be given a claim check tag. PLEASE SAVE THESE as they are what you will need to pick up your item(s).

Pick Up Information

Pick up is Monday, September 23 from 2 - 7 p.m. and Tuesday, September 24 from 9 a.m. - 2 p.m. Please remember to bring your claim check tag as this is how you reclaim your pieces. If you have misplaced your claim check tag, please bring a current photo ID of the exhibitor.

CREATIVE ARTS RULES AND REGULATIONS

ENTRY INFORMATION

Who Can Enter? ONLY OKLAHOMA RESIDENTS may enter our contests. Exhibitors entering must be amateurs unless an Open (expert) Division is offered.

Who is considered an Amateur? Someone who earns less than 10% of their income from this skill. If you have taught this craft before, or currently teach, you are not considered an Amateur, but may enter in an open class, if available.

Are there any size limitations? Furniture may be no larger than 40" in any direction. All other exhibits are limited to 30" in any direction.

How many exhibits can be entered? ONE ENTRY PER CLASS (unless otherwise stated.) There is no limit on the total number of entries. Photography is the exception with 12 total entries allowed per exhibitor. All entries must have been completed since the final day of the previous Oklahoma State Fair.

Can I enter something I have entered in the pass? Unless otherwise specified, items can only be entered once.

What is the cost to enter? CREATIVE ARTS ENTRIES ARE FREE if registered by August 15. (Only the wine contest requires an entry fee.)

May I mail in my exhibit? No.

Do I need to pre-register for live contests? Yes. You cannot register the day of.

How do I get into the Fair if I am entered in a live contest? **ONLY EXHIBITORS** receive FREE ENTRY AND PARKING with live contests. Family and friends will need to purchase a ticket to get in the day of the contest. Please check out our pre-sale of tickets starting in July and ending the day before the start of the Fair.

All entries must be the work of the exhibitor and completed since the previous Oklahoma State Fair except as noted.

CREATIVE ARTS DEPARTMENT REGULATIONS

- The Oklahoma State Fair reserves the right to reject any exhibit offered if it is objectionable in any way, if it requires an excessive amount of space, or if the capacity of the department has been reached. Any contest may be cancelled for lack of entries.
- Each item turned in is completed by one person, unless otherwise noted in the competition information.
- All work must be original. Art reproduced or rendered from works of masters, from advertisements, materials from published sources, or from widely circulated photographs is not original. AI art is not allowed, unless specified by the rules.
- Your items will be handled with care, however, Oklahoma State Fair, Inc. is not responsible for items that are damaged or lost while on display during the Fair. If the exhibitor feels it necessary, they must purchase their own insurance at their own expense. Exhibitors MAY NOT supply their own display stands. Only OSF stands will be used for display.
- Each exhibit will be evaluated by qualified individuals and the decision of the judge(s) is final. All cash prizes will be paid from the awards as marked by the judges and not from ribbons that may be attached to the exhibits. Judges are instructed not to award cash prizes unless the exhibit is deemed worthy of the placing awarded. Premium payouts for the Creative Arts Department will be mailed to exhibitors after the close of the Fair.
- Within 90 days from the last day of the 2024 Oklahoma State Fair, it is the responsibility of the Payee to file, in writing, a claim for lost or incorrect awards.
- If it is ascertained that an exhibitor has made any false statement with regards to any article or exhibit, or if any exhibitor attempts to harass or interfere with the judge or judges in the performance of their duties, the exhibitor shall be excluded from competition and forfeit all premiums.
- Any protest must be made in writing and accompanied by a deposit of \$50, which will be forfeited if protest is not sustained. Said protest must state plainly the cause of complaint or appeal and must be filed with the Creative Programs Manager by 5 p.m. on Thursday of the closing week of the Fair. Judges will be encouraged to view exhibits after items have been placed on display with names. If they believe that an exhibitor is not in the correct skill level, that judge will be encouraged to protest the placement.
- Every effort will be made to display entries in an attractive arrangement; however, items entered for competition will be displayed through 3rd place. Other entries will be displayed only as space is available and at the discretion of the superintendents.

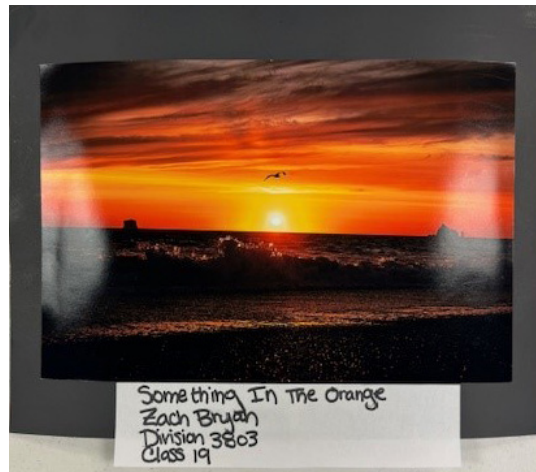
PREP YOUR PHOTOS FOR DISPLAY

Photos are turned in physically during exhibit delivery and NOT DIGITALLY. All photos must be 8" x 10" or 8" x 12" in size and mounted on top of an 11" x 14" black backing, OR 8" x 8" and mounted on top of an 11" x 11" black backing. Photos may be mounted on top of a solid piece of cardstock, poster board, matte board or black foam core. Photos with a cut matte on top of the picture WILL NOT be accepted. Photos must not be titled or identified on the front but identifying information will be accepted on back of print. Photos will not be accepted if they do not follow these requirements.

PROPERLY MOUNTED PHOTOS



INCORRECTLY MOUNTED PHOTOS



ONLINE PHOTOGRAPHY CONTEST

PHOTOS FROM THE FAIR

JUNE 17- JULY 5 ONLY!

If you ever have attended the Oklahoma State Fair, chances are you captured some memories with a camera. Send in your favorite Fair photos for your chance to win season passes for the 2024 Oklahoma State Fair – that's one admission for each day!

The Rules:

This contest is open to all ages. Amateurs only.
All photos must be no greater than 10MB.
The photos can be black & white, color, or sepia.
One entry, per person, per category.

All applicants must enter their submissions on the State Fair entry page found at <https://okstatefair.wufoo.com/forms/zvu0xex1crf2ej/>

The following information will be asked for on the form:

Contestant First and Last Name:

Current Address:

Phone Number(s):

Email:

Category:

Entries will be accepted from Monday, June 17, 2024 through Friday, July 5, 2024. Late entries will not be accepted. Winners will be announced on or before Friday, July 12, 2024.

By submitting your entry, you are giving the Oklahoma State Fair permission to reproduce your image in any display, merchandise, publication or printed material without compensation.

Categories

Animals & Agriculture Aficionado: From prize-winning livestock to antique tractors and farm machinery on display, give us your best shot.

Carnival Ride Renegades: Spinning, riding, or upside-down, submit your best photo from the carnival midway. This does not include Ferris Wheel Photos.

Fair Favorites: This is a "wild card" category of sorts. Show us what you love about the Oklahoma State Fair!

Fair Food Fanatic: From traditional to unique, we're looking for the best Fair food photos.

Wheel Watchers: The Oklahoma State Fair has three Ferris Wheels - show off your snapshot of one of them!

AWARDS

The top photo in each category will receive two (2) adult season passes and one (1) season parking valid for all days during the 2024 Oklahoma State Fair, September 12 - 22.

These five winning photos will be on display in the photography exhibit during the Fair and will receive first place rosettes. There will be a 'Best Of Show' voted for the top five photos.

PHOTOGRAPHY SHOW

Division 3803

Due to class size limitations, exhibitors may only enter one photo per class, up to 12 entries total.

Note: Young photographers may choose to enter in the adult class but may not enter both youth and adult.

Important:

Please check on previous pages how to submit your photography. As a reminder, photos will be turned in physically, NOT digitally.

Only amateur photographers may enter. An amateur photographer derives no more than 10% of their income from photography.

All photos must be taken by the exhibitor. Taking a photo of another photo does not make it eligible for entry by an exhibitor. Black & white or color photos are accepted in all classes. Photos previously entered in the Oklahoma State Fair are not eligible for entry. Misclassified photos will be moved to the appropriate class. Photos will not be released early.

Adults

- 01. Wildlife – mammals
- 02. Wildlife – birds
- 03. Wildlife – insects
- 04. Wildlife – marine, lizards, etc.
- 05. Rural Oklahoma – structures
- 06. Rural Oklahoma – landscapes
- 07. Urban Oklahoma
- 08. Americana (Other 49 states) – urban
- 09. Americana (Other 49 states) – rural
- 10. International
- 11. Holiday (Christmas, Easter, Halloween, etc.)
- 12. Geometric & abstract patterns
- 13. Portraits – formal
- 14. Portraits – candid
- 15. Still life
- 16. Action
- 17. Planes, Trains & Automobiles
- 18. Digitally enhanced art
- 19. Twilight/Nighttime

- 20. Weather
- 21. At the Fair
- 22. Pets
- 23. Floral – Flowers
- 24. Floral – Plants, trees & floral landscapes
- 25. Selfies
- 26. Class Not Listed

Youth (18 & under)

- 27. Nature and wildlife
- 28. Landscapes
- 29. Pets
- 30. Weather
- 31. Geometric
- 32. Digitally enhanced art
- 33. Portraits & people
- 34. Selfies
- 35. Sepia or black & white
- 36. Class Not Listed

AWARDS

Ribbons will be awarded through 10th place in each class. Honorable mention ribbons will be awarded for up to 50 adult entries and up to 15 youth entries.

BEST OF SHOW Adult	Rosette, Medallion & \$125
PORTFOLIO AWARD Adult**	Rosette & \$50
BEST OF SHOW Youth	Rosette, Medallion & \$75
PORTFOLIO AWARD Youth**	Rosette & \$50
SUPERINTENDENT’S CHOICE	Rosette & \$25

**Portfolio Award is presented to the exhibitor with the highest number of points in division 3803. Each 1st place win counts as 3 points, 2nd place counts as 2 points, 3rd place counts as 1 point.

OKLAHOMA STATE FAIR SHUTTERBUGS: LIVE DIGITAL PHOTO SHOOTOUT

Division 3804

Sunday, September 15, 2024

1 p.m. - Check-in at a location: Arts Annex

3 p.m. - Upload Photos

5 - 5:30 p.m. - Judging

6 p.m. - Awards Announcement

Space is limited to the first 50 exhibitors who pre-register in each class.

After check-in and instructions are given, participants will be released into the OKC Fairgrounds to shoot-it-out with other digital photographers. Participants must return to the Arts Annex by 3 p.m. to download the image of their choice from their camera memory card.

PLEASE REMOVE ALL PHOTOS FROM THE SELECTED FILE IN YOUR MEMORY CARD BEFORE STARTING THE CONTEST.

Participants may submit only ONE photo for judging. Submitted photos from all participants must include the element provided to them at check-in.

Judging will take place from 5 - 5:30 p.m. All images will be compiled into a slide show. Participants and fairgoers will then vote for three of their favorites, with the top three vote recipients placing first through third.

NO DIGITAL ALTERATIONS or CROPPING! This includes any in-camera adjustment options.

NO TRIPODS ALLOWED. Tripods are a tripping hazard and will not be permitted. Monopods are allowed.

By participating in this contest, exhibitors are giving their permission to the Oklahoma State Fair to reproduce their image in any Fair publications, printed materials or merchandise without compensation.

Only amateur photographers may enter. An amateur derives no more than 10% of their income from photography.

Classes:

01. Adults

02. 18 years or younger

Ribbons will be awarded through 10th place in each class.

AWARDS

1st Place (in each class) Rosette & \$50

2nd Place (in each class) \$25

3rd Place (in each class) \$15

**DIGITALLY EDITED
PHOTO CONTEST
Division 3805**

Saturday, September 21, 2024

11 a.m. - Check-in at a location: Arts Annex

12 p.m. - Judging Awards

Are you a photo editing genius? Do you have an eye for editing? Enter in the Oklahoma State Fair Digitally Edited Photo Contest!

Contestants will pre-enter the contest and then about a week before the Fair be emailed a photo to edit. Contestants will be given one week to edit the photo and then must email it back to the Oklahoma State Fair.

Image will be digitally enhanced or altered to create an entirely different, family-friendly, photo (no guns, bad words or suggestive imagery can be added). Removed images, inserted images and cloned images and the like may be used. Combined images must be images produced by the photographer. The finished entry must still appear to be a photograph. Images can be manipulated in any method, either through photo editing software or other techniques.

Photos will be on display for one week and be voted on by the public. During the second weekend, judges will come to the Fair to judge the entries.

Only amateur editors may enter. An amateur derives no more than 10% of their income from photo editing.

Photos must be able to be printed by the Oklahoma State Fair for display. Photo must be in the size of 8" x 11".

AWARDS

1st Place	Rosette & \$50
2nd Place.....	\$25
3rd Place.....	\$15
People's Choice.....	\$50