

# OKLAHOMA STATE FAIR

## LIVESTOCK SHOW

**POW!**

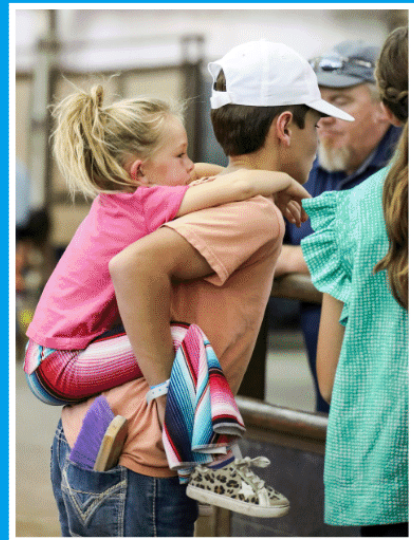


**JOIN US  
SEPTEMBER  
12-22,  
2024!**





# THE OKLAHOMA STATE FAIR WAS THE PLACE TO BE IN '23!



## **FINAL DRIVE PHOTOGRAPHY**

is the official photographer of the  
Oklahoma State Fair Livestock &  
Equine Shows.

[www.finaldrivephotography.com](http://www.finaldrivephotography.com)



# ABOUT US

## MISSION

OKLAHOMA STATE FAIR, INC IS A 501(C)(3) NOT-FOR-PROFIT CORPORATION THAT SERVES THE PEOPLE OF OKLAHOMA AND IS DEDICATED TO CONTINUING THE ORGANIZATION'S HERITAGE OF EDUCATION, ENTERTAINMENT, AND ECONOMIC DEVELOPMENT THROUGH THE OPERATION OF THE OKC FAIRGROUNDS AND THE ANNUAL OKLAHOMA STATE FAIR.

## HISTORY

OCTOBER 5, 1907, WAS A HISTORIC DAY IN THE YOUNG LIFE OF THE FRONTIER TOWN OF OKLAHOMA CITY. ALL ATTENTION THAT DAY WAS FOCUSED ON THE OPENING CEREMONY OF A NEW INSTITUTION LOCATED A MILE EAST OF DOWNTOWN - THE OKLAHOMA STATE FAIR. FROM THOSE HUMBLE BEGINNINGS IN 1907, THE OKLAHOMA STATE FAIR HAS GROWN TO BECOME ONE OF THE PREMIER STATE FAIRS IN THE NATION. WE ARE PROUD THAT OUR FAMILY EVENT HAS BEEN A PART OF THE OKLAHOMA LANDSCAPE FOR MORE THAN 100 YEARS - WE ARE LOOKING FORWARD TO AMUSING AND ENTERTAINING FAIRGOERS FOR MANY MORE.



# CONTACT INFORMATION

MATTEA DANN - AGRIBUSINESS

MDANN@OKSTATEFAIR.COM

(405) 948-6768

FAX: (405) 948-4129



EYO GENERAL INQUIRIES

EYO@OKSTATEFAIR.COM

(405) 235-0404

KASS NEWELL - OYE EXECUTIVE VICE PRESIDENT

KASS@OKYOUTHEXPO.ORG

(405) 252-1219



JACOB SANDERSON- OYE DIRECTOR OF LIVESTOCK

JACOB@OKYOUTHEXPO.ORG

(405) 252-0184



# SHOW INFORMATION

## FEED & BEDDING OFFICE

CALL FOR CURRENT PRICES AND  
DELIVERY OPTIONS TO YOUR STALL SPACE.

OFFICE PHONE  
(405) 948-6786

OFFICE LOCATION  
WEST OF BARN 7/SOUTH OF GATE 7  
ENTRANCE

## GATE 7 HOURS

SEPTEMBER 11, 2024  
8 A.M. - NOON (TACK ONLY)  
NOON - 10:00 P.M.

SEPTEMBER 12-22, 2024  
6:30 A.M. - 10:00 P.M.

## SHOW OFFICE

OFFICE HOURS  
SEPTEMBER 11-22, 2024  
7:30 A.M. - 7:30 P.M.

OFFICE LOCATION  
SOUTH SIDE OF SUPERBARN/  
NORTH OF JIM NORICK  
ARENA

## MAILING ADDRESS

OKLAHOMA STATE FAIR  
ATTN: LIVESTOCK SHOW  
3001 GENERAL PERSHING BLVD  
OKLAHOMA CITY, OK 73107





# SHOW UPDATES

## **NEW SHOWS/CHANGES**

Look for yellow highlighted text throughout this guide to find out what is new in 2024!



## **EYO MANAGED EVENTS**

When you see this logo, this event/show is managed by OYE staff. Contact directly for information.

## **OSF MANAGED EVENTS**

When you see this logo, this event/show is managed by OSF AgriBusiness Department staff. Contact directly for information.







# SWINE GUIDE CONTENTS

*(Click on the title or page number below to jump to that page.)*

**SWINE GUIDE CONTENTS..... 7**

**LIVESTOCK SHOW SCHEDULE..... 8**

**WEEK 1 LIVESTOCK ARRIVAL / CHECK-IN SCHEDULE..... 11**

**WEEK 2 LIVESTOCK ARRIVAL / CHECK-IN SCHEDULE..... 12**

**PARTICIPANT GENERAL RULES & INFORMATION..... 13**

**LIVESTOCK SHOW RULES & REGULATIONS..... 15**

    EXHIBITOR SHOW ELIGIBILITY..... 15

    ENTRY INFORMATION & RULES..... 16

    LIVESTOCK SHOW FEES..... 20

    EXHIBITOR ADMISSION INFORMATION..... 22

    AG TEACHER/LEADER ADMISSION..... 23

    ANIMAL WELFARE POLICY..... 24

    HEALTH & SANITARY REGULATIONS..... 28

    SHOW RING CODE OF ETHICS..... 30

**YOUTH SWINE SHOW GUIDES..... 31**

    SWINE HEALTH DOCUMENTATION REQUIREMENTS..... 32

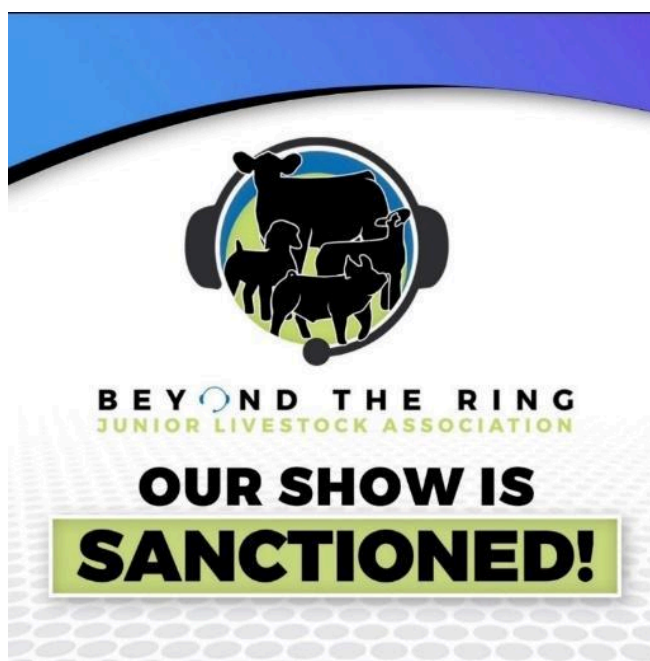
    SWINE BREED CHARACTERISTICS GUIDELINES..... 32

    YOUTH SWINE SHOWMANSHIP..... 34

    YOUTH BREEDING GILTS (DIVISIONS 1402 – 1414)..... 36

    YOUTH COMMERCIAL GILTS (DIVISIONS 1415-1516)..... 38

    JUNIOR MARKET BARROWS (DIVISION 1400-1409)..... 40







# LIVESTOCK SHOW SCHEDULE

## WEEK 1

### NEW COMPETITION/EVENT/DAY OR TIME

| Wednesday, September 11 |   |                               |
|-------------------------|---|-------------------------------|
| 8 a.m.                  | EYO Early Tack Move-In  |                               |
| Noon                    | EYO Livestock Arrival Begins  |                               |
|                         |   |                               |
| Thursday, September 12  |   |                               |
| 9 a.m.                  | Alfalfa Hay Show Judging  | OEH 3                         |
| 3:30 – 5 p.m.           | Angus, British White & Simmental Check-In & In Place  | Cattle Office                 |
| 4 p.m.                  | Junior Beef Showmanship   | Performance Arena             |
| 6 p.m.                  | Old Timers' Showmanship   | Performance Arena             |
| 7 p.m.                  | CARDS DUE & IN PLACE:<br>Commercial Heifers & Junior Steers   | Self-Check-In                 |
|                         |   |                               |
| Friday, September 13    |   |                               |
| 8 a.m.                  | Junior Angus Show<br>Junior Simmental Show<br>Junior Simmental Influence Show<br>Junior Steer Show                                  | Performance Arena<br>(Ring A) |
| 8 a.m.                  | Open British White Show<br>Open Angus Show<br>Open Simmental Show<br>Open Simmental Influence Show<br>Junior Commercial Heifer Show | Performance Arena<br>(Ring B) |
| 10 a.m.                 | Purebred Barrow Cards Due   | Self-Check-In                 |
| 10 a.m. - 12 p.m.       | Goat Skillathon   | Barn 3 Auditorium             |
| 11 a.m. – 1 p.m.        | Market Sheep Classification   | Barn 1 Arena (Ring A)         |
| 12 p.m. - 2 p.m.        | Beef Skillathon   | Barn 3 Auditorium             |
| 1 p.m.                  | <b>ALL EYO LIVESTOCK IN PLACE</b>   |                               |
| 1 p.m.                  | AOB & Brahman Check-In  | Cattle Office                 |
| 1:15 – 1:45 p.m.        | Junior Breeding Sheep Check-In  | Sheep Office                  |
| 2 p.m.                  | Charolais & Brangus Check-In  | Cattle Office                 |
| 2 p.m.                  | Junior Sheep Showmanship  | Barn 1 Arena (Ring A)         |
| 2 p.m.                  | Junior Market & Prospect Goat Showmanship   | Barn 1 Arena (Ring B)         |
| 3 p.m.                  | Junior Swine Showmanship<br>Junior Purebred Hampshire Barrow Show<br>Junior Purebred Yorkshire Barrow Show                          | Barn 8 Arena                  |
| 3 p.m.                  | Chianina, Mini-Hereford, & Santa Gertrudis Check-In   | Cattle Office                 |
| 3 p.m.                  | CARDS DUE:<br>Market Goats, Wether Dams, Market Barrows,<br>Commercial Gilts, Breeding Gilts  | Self-Check-In                 |
| 3 – 4 p.m.              | REGISTRATION CHECK: Breeding Gilts  | Swine Office                  |
| 4 p.m.                  | Hereford, Limousin, Maine-Anjou, & MaineTainer<br>Check-In  | Cattle Office                 |
| 5 p.m.                  | Red Angus & Shorthorn Check-In  | Cattle Office                 |





**WEEK 1 (continued)**  
**NEW COMPETITION/EVENT/DAY OR TIME**

| <b>Saturday, September 14</b>              |  |                               |
|--|--|-------------------------------|
| 8 a.m.                                     | Junior AOB Show<br>Junior Brahman Show<br>Junior Brangus Show<br>Junior Chianina Show<br>Junior Mini-Hereford Show <i>(Pre-Juniors included)</i><br><b>Junior Santa Gertrudis Show</b><br><b>Junior Charolais Show</b><br><b>Junior Charolais Composite Show</b> | Performance Arena<br>(Ring A) |
| Immediately following Junior AOB Show      | Open AOB Show<br>Open Brahman Show<br>Open Brangus Show<br>Open Chianina Show<br>Open Mini-Hereford Show<br><b>Open Santa Gertrudis Show</b><br><b>Open Charolais Show</b><br><b>Open Charolais Composite Show</b>   | Performance Arena<br>(Ring B) |
| 9 a.m.                                     | Junior Market Wether Lamb Show   | Barn 1 Arena (Ring A)         |
| 9 a.m.                                     | Junior Market Wether Goat Show   | Barn 1 Arena (Ring B)         |
| 9 a.m.                                     | Junior Market Barrow Show<br>Youth Commercial Gilt Show  | Barn 8 Arena                  |
| 11 a.m.                                    | Open Giant Pumpkin Competition Weigh-Off   | Barn 3 Auditorium             |
| 1 p.m.                                     | Junior Wether Dam Goat Show  | Barn 1 (Ring B)               |
| 3 p.m.                                     | CARDS DUE:<br>Prospect Does  | Self-Check-In                 |
| 5 - 7 p.m.                                 | Farmhand Olympics<br><i>presented by Oklahoma Farm Bureau</i>  | Barn 1 Arena                  |
| <b>Sunday, September 15</b>                |  |                               |
| 8 a.m.                                     | Junior Hereford Show<br>Junior Maine-Anjou Show<br>Junior MaineTainer Show<br>Junior Red Angus Show<br>Junior Percentage Red Angus Show<br><b>Junior Shorthorn Show</b><br><b>Junior Shorthorn Plus Show</b><br><b>Junior Limousin Show</b>                      | Performance Arena<br>(Ring A) |
| Immediately following Junior Hereford Show | Open Hereford Show<br>Open Maine-Anjou Show<br>Open MaineTainer Show<br>Open Red Angus Show<br><b>Open Shorthorn Show</b><br><b>Open Shorthorn Plus Show</b>   | Performance Arena<br>(Ring B) |
| 9 a.m.                                     | Junior Market Ewe Show<br>Junior Breeding Sheep Show   | Barn 1 Arena (Ring A)         |
| 9 a.m.                                     | Junior Prospect Doe Show   | Barn 1 Arena (Ring B)         |
| 9 a.m.                                     | Youth Breeding Gilt Show   | Barn 8 Arena                  |
| 9 a.m.                                     | Youth Extemporaneous Speech Competition  | Barn 3 Auditorium             |
| <b>4 p.m.</b>                              | <b>Supreme Cattle Drive</b>  | <b>Performance Arena</b>      |





**WEEK 1 (continued)**  
**NEW COMPETITION/EVENT/DAY OR TIME**

| <b>Monday, September 16</b>  |   |                                |
|------------------------------|---|--------------------------------|
| 9 a.m.                       | Open Pygmy Goats - Shows A & B  | Barn 1 Arena (Ring A)          |
| 9 a.m.                       | 4-H/FFA Dairy Cattle Judging Contest Registration                                     | Performance Arena (Grandstand) |
| 10 a.m.                      | 4-H/FFA Dairy Cattle Judging Contest  | Performance Arena              |
| 10 a.m.                      | Open Breeding Sheep Show<br>Regional Natural Colored Wool Growers Sheep & Fleece Show | Barn 1 Arena (Ring B)          |
| 5 p.m.                       | Junior Dairy Cattle Showmanship   | Performance Arena              |
| 6 p.m.                       | Goat Milking Experience   | Barn 1 Arena                   |
| <b>Tuesday, September 17</b> |   |                                |
| 8:30 a.m.                    | Youth Dairy Goat Showmanship<br>Youth & Open Dairy Goats (Jr. Goats)                  | Barn 1 Arena                   |
| 9 a.m.                       | Junior & Open Dairy Cattle Shows  | Performance Arena              |

**WEEK 2**  
**NEW COMPETITION/EVENT/DAY OR TIME**

| <b>Wednesday, September 18</b>      |  |                                |
|-------------------------------------|--|--------------------------------|
| 8:30 a.m.                           | Youth & Open Dairy Goats (Sr. Goats)                       | Barn 1 Arena                   |
| <b>Thursday, September 19</b>       |  |                                |
| 9 a.m.                              | 4-H/FFA Livestock Judging Contest Registration             | Performance Arena (Grandstand) |
| 10 a.m.                             | 4-H/FFA Livestock Judging Contest                          | Barn 8 Arena                   |
| <b>Friday, September 20</b>         |  |                                |
| 5 p.m.                              | Youth Poultry Showmanship                                  | Barn 3 Auditorium              |
| 7 p.m.                              | Open Mini Silky Goat Showmanship                           | Barn 1 Arena                   |
| <b>Saturday, September 21</b>       |  |                                |
| 8 a.m.                              | Open Commercial Boer Goats<br>Open ABGA Boer Goats – Day 1 | Barn 1 Arena                   |
| 9 a.m.                              | Open Mini Silky Goats - Shows A/B/C                        | Barn 1 Arena                   |
| 10 a.m.                             | Open Llama and Alpaca Show                                 | Barn 8 Arena                   |
| 10 a.m.                             | Open Poultry Show A  | Barn 4                         |
| 2 p.m.                              | Open Mini Silky Goats - Shows D/E/F                        | Barn 1 Arena                   |
| 7 p.m. (or 1 hour after last class) | Open Llama and Alpaca Show – Costume Contest Classes       | Barn 8 Arena                   |
| <b>Sunday, September 22</b>         |  |                                |
| 9 a.m.                              | Open ABGA Boer Goats – Day 2                               | Barn 1 Arena                   |
| 10 a.m.                             | Open Mini Silky Goats - Shows G & H                        | Barn 1 Arena                   |
| 10 a.m.                             | Open Llama and Alpaca Show                                 | Barn 8 Arena                   |
| 10 a.m.                             | Open Poultry Show B  | Barn 4                         |





# WEEK 1 LIVESTOCK ARRIVAL / CHECK-IN SCHEDULE

More detailed information can be obtained by checking each show's competition guide.

## REMINDER:

**Gate 7 Hours:** September 11: 8 a.m. (TACK ARRIVAL ONLY)  
 September 11: Noon – 10 p.m.  
 September 12 – 22: 6:30 a.m. – 10 p.m.

**Livestock Show**

**Office Hours:** September 11 – 22: 7:30 a.m. – 7:30 p.m.



| Breed                                | Barn  | Earliest Date & Time in Barn | In Place By               | Check In Time                       |
|--------------------------------------|-------|------------------------------|---------------------------|-------------------------------------|
| Angus                                | B-4   | 9/11 @ Noon                  | 9/12 @ 5 p.m.             | 9/12 from 3:30 - 5 p.m.             |
| AOB Beef                             | B-4   | 9/11 @ Noon                  | 9/13 @ 1 p.m.             | 9/13 @ 1 p.m.                       |
| Brahman                              | B-4   | 9/11 @ Noon                  | 9/13 @ 1 p.m.             | 9/13 @ 1 p.m.                       |
| Brangus                              | B-4   | 9/11 @ Noon                  | 9/13 @ 1 p.m.             | 9/13 @ 2 p.m.                       |
| Breeding Gilts                       | B-8/9 | 9/11 @ Noon                  | 9/13 @ 1 p.m.             | 9/13 from 3 – 4 p.m.                |
| Breeding Sheep (Jr)                  | B-1   | 9/11 @ Noon                  | 9/13 @ 1 p.m.             | 9/13 from 1:15 – 1:45 p.m.          |
| British White                        | B-4   | 9/11 @ Noon                  | 9/13 @ 1 p.m.             | 9/13 @ 2 p.m.                       |
| Charolais & Composites               | B-4   | 9/11 @ Noon                  | 9/13 @ 1 p.m.             | 9/13 @ 2 p.m.                       |
| Chianina                             | B-4   | 9/11 @ Noon                  | 9/13 @ 1 p.m.             | 9/13 @ 3 p.m.                       |
| Commercial Gilts                     | B-8/9 | 9/11 @ Noon                  | 9/13 @ 1 p.m.             | 9/13 by 3 p.m. (self-check-in)      |
| Commercial Heifers                   | B-4   | 9/11 @ Noon                  | 9/12 @ 7 p.m.             | 9/12 by 7 p.m. (self-check-in)      |
| Hereford                             | B-4   | 9/11 @ Noon                  | 9/13 @ 1 p.m.             | 9/13 @ 4 p.m.                       |
| Limousin                             | B-4   | 9/11 @ Noon                  | 9/13 @ 1 p.m.             | 9/13 @ 4 p.m.                       |
| Maines (Anjou&Tainer)                | B-4   | 9/11 @ Noon                  | 9/13 @ 1 p.m.             | 9/13 @ 4 p.m.                       |
| Market Barrows                       | B-8/9 | 9/11 @ Noon                  | 9/13 @ 1 p.m.             | 9/13 by 3 p.m. (self-check-in)      |
| Market Ewes                          | B-1   | 9/11 @ Noon                  | 9/13 @ 1 p.m.             | 9/13 from 11 a.m. – 1 p.m. weigh in |
| Market Wether Sheep                  | B-1   | 9/11 @ Noon                  | 9/13 @ 1 p.m.             | 9/13 from 11 a.m. – 1 p.m. weigh in |
| Market Wether/Wether Dam Goats       | B-1   | 9/11 @ Noon                  | 9/13 @ 1 p.m.             | 9/13 by 3 p.m. (self-check-in)      |
| Mini Herefords                       | B-4   | 9/11 @ Noon                  | 9/13 @ 1 p.m.             | 9/13 @ 3 p.m.                       |
| Prospect Does                        | B-1   | 9/11 @ Noon                  | 9/13 @ 1 p.m.             | 9/14 by 3 p.m. (self-check-in)      |
| Junior Steers                        | B-4   | 9/11 @ Noon                  | 9/12 @ 7 p.m.             | 9/12 by 7 p.m. (self-check-in)      |
| Red Angus                            | B-4   | 9/11 @ Noon                  | 9/13 @ 1 p.m.             | 9/13 @ 5 p.m.                       |
| Simmental & Influence                | B-4   | 9/11 @ Noon                  | 9/12 @ 5 p.m.             | 9/12 from 3:30 - 5 p.m.             |
| Santa Gertrudis                      | B-4   | 9/11 @ noon                  | 9/13 @ 1 p.m.             | 9/13 @ 3 p.m.                       |
| Shorthorns                           | B-4   | 9/11 @ Noon                  | 9/13 @ 1 p.m.             | 9/13 @ 5 p.m.                       |
| Alfalfa Hay Show                     | OEH3  | 9/11 @ 10 a.m.               | 9/11 @ 3 p.m.             | 9/11 by 3 p.m.                      |
| Giant Pumpkin Weigh-Off              | B3A   | 9/13 @ 6 p.m.                | 9/14 @ 9 a.m.             | Upon arrival                        |
| Youth Extemporaneous Public Speaking | B3A   | 9/15 @ 8 a.m.                | 5 min. before speech time | Upon arrival                        |





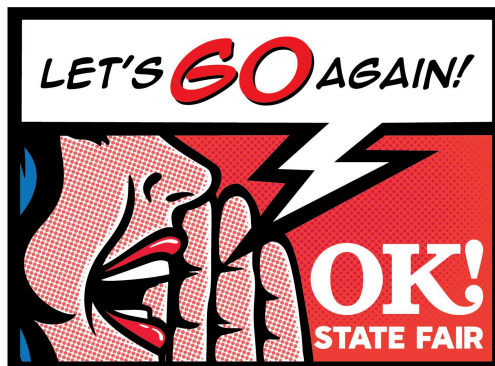
**ALL ANIMALS ARE RELEASED AFTER THE BREED SHOW/COMPETITION IS COMPLETE.**  
**THERE WILL BE NO RELEASE CARDS IN 2024.**

## WEEK 2 LIVESTOCK ARRIVAL / CHECK-IN SCHEDULE

More detailed information can be  
 obtained by checking each show's  
 competition guide.

obtained by checking each show's

**REMINDER:**



**Gate 7 Hours:** September 12 – 22:  
 6:30 a.m. – 10 p.m.

**Livestock Show Office Hours:**  
 September 11 – 22: 7:30 a.m. –  
 7:30 p.m.

| Breed                               | Barn       | Earliest Date & Time in Barn | In Place By          | Check In Time                                      |
|-------------------------------------|------------|------------------------------|----------------------|--|
| Boer Goats & Commercial Does (Open) | B-1        | 9/19 @ 6 p.m.                | 9/20 @ 4 p.m.        | 9/20 from 1 – 6 p.m.                               |
| Breeding Sheep (Open)               | B-1        | 9/14 @ 9 a.m.                | 9/15 @ Noon          | 9/15 from 1 – 4 p.m.                               |
| Dairy Cattle                        | B-4        | 9/14 @ Noon                  | 9/15 @ 5 p.m.        | 9/15 @ 5 p.m.                                      |
| Dairy Goats                         | B-1        | 9/16 @ Noon                  | 9/16 @ 6 p.m.        | Upon arrival                                       |
| Llamas/Alpacas                      | B-8        | 9/19 @ 2 p.m.                | 9/20 @ 10 p.m.       | 9/20 by 10 p.m.                                    |
| Mini Silky Goats                    | B-1        | 9/19 @ Noon                  | 9/20 @ 4 p.m.        | 9/20 from 4 – 5 p.m.                               |
| Natural Colored Wool Sheep          | B-1        | 9/14 @ 9 a.m.                | 9/15 @ Noon          | 9/15 from 1 – 4 p.m.                               |
| <b>Poultry</b>                      | <b>B-4</b> | <b>9/20 @ 8 a.m.</b>         | <b>9/20 @ 2 p.m.</b> | <b>Upon arrival</b>                                |
| Pygmy Goats                         | B-1        | 9/14 @ 8 a.m.                | 9/15 @ 9 p.m.        | 9/15 from 2 – 6 p.m. OR<br>9/16 from 8 – 8:30 a.m. |

**ALL ANIMALS ARE RELEASED AFTER THE BREED SHOW/COMPETITION IS COMPLETE.**  
**THERE WILL BE NO RELEASE CARDS IN 2024.**





## PARTICIPANT GENERAL RULES & INFORMATION

**ALL EXHIBITORS ARE RESPONSIBLE FOR BEING AWARE OF AND ADHERING TO ALL RULES. ENTRY IN ANY EVENT/SHOW/DIVISION CONSTITUTES AS YOUR AGREEMENT TO ABIDE BY ALL RULES/GUIDELINES AS PROVIDED HEREIN OR BY VERBAL INSTRUCTION/REQUEST MADE BY ANY OKLAHOMA STATE FAIR STAFF, OFFICIALS AND/OR SUPERINTENDENTS.**

### ADMINISTRATIVE RULES AND REGULATIONS

1. Oklahoma State Fair, Inc. (hereinafter referred to as OSF), through its authorized officials, reserves the final and absolute right to interpret and enforce its own rules and regulations, and to settle and determine all matters, questions and differences connected with or incidental to the Oklahoma State Fair (OSF).
2. OSF reserves the right to amend or add to these rules, as they deem necessary. In the event of a conflict regarding general or special rules, the latter will govern.
3. No dogs or other pets are permitted at OKCF, whether on a leash or not. Only bona fide service dogs, trained animals in scheduled acts, OSF competitions and police dogs are allowed. Violations could result in a \$50 fine, impounding of the animal and/or expulsion from the OSF.
4. OSF does not permit the use of balloon displays, inflatable decorations, public address systems, electronic amplifiers, gongs, bells, and other noisy instruments without prior approval. Distribution of helium-filled Mylar balloons is not allowed under any circumstances.
5. No person will be permitted to distribute or post advertising material, handbills, fliers, or heralds at OKCF without prior approval from the OSF administration, and then only within the designated space. OSF can demand the removal of any advertising matter it considers objectionable.
6. All space is owned and designated by OSF. Management reserves the right to reassign any space, stall or pen not occupied by the exhibitor on any specified date. No exhibitor will be allowed to sublet or sell any space, privilege, stall, or pen without written permission from the OSF. No exhibitor will be allowed to sell or trade entries with exhibitors not entered in the show.
7. Admission each day requires the display and verification of an outside gate admission ticket or armband purchase. Re-entry requires a hand stamp and the armband or ticket stub.
8. Failure to comply with these rules and regulations will cause forfeiture of premiums and privileges and be considered sufficient cause to bar said exhibitor from future participation at the OSF.
9. Firearms: Per Oklahoma State Statute Title 21, Section 1290.22 (D) 3, carrying a concealed or unconcealed firearm is prohibited at the OKC Fairgrounds during the Oklahoma State Fair. This restriction extends to any person, regardless of their professional licensing, occupation, or jurisdiction.
10. OSF reserves the right to eject or cause to be ejected from OKC Fairgrounds any person(s) it deems objectionable or in violation of any applicable laws, rules or regulations in its sole discretion.
11. Security screening measures and special policies are in effect. Anyone on property for any purpose is subject to and must comply with all posted measures and policies whether provided at entry points, on the OSF website, in any written materials or as verbally issued by OSF Management or designated security personnel. Measures and policies are subject to change without notice.
12. A youth admissions policy will be in effect. Youth under the age of 18 will be required to be accompanied by a responsible person at least 25 years of age or a parent or legal guardian. Youth in official, sanctioned OSF activities may be considered as accompanied by a teacher, chapter leader, extension agent, contest superintendent/official, producer/promoter or sponsor as applicable, regardless of age or familial relation. Youth in these activities should enter the specified gate as instructed to avoid confusion with public/attendee policies at the general admission gates. Youth may be asked to identify if they are involved in these sanctioned activities when away from activity locations; please be prepared to identify the specific activity if necessary to any security officials.

### EXHIBITOR'S WAIVER AND RELEASE OF LIABILITY

By completing and submitting any/all entries into any OSF competition, all individuals associated with any contestant, exhibitor, owner, associate, assistant, guest and/or animal(s) hereby releases, discharges and agrees to indemnify Oklahoma State Fair, Inc., the City of Oklahoma City, and the City of Oklahoma City Public Property Authority (and all of their officers, directors, members, managers, agents, representatives and employees) ("Indemnified Parties") from



any and all losses or expenses of any kind, civil penalties, crimes, and causes of actions (including cost for defense, settlement and attorney fees) arising from or related to (1) death or bodily injury to any person, (2) destruction, damage, loss of theft of any property, (3) any violation of any law or (4) any other claim, cause of action, damage or expense, which results from or arises out of any act or failure to act, claim, demand or action arising from or by reason of personal injury that may occur to any associated individual(s) or animal(s) or properties entered or attending this Event being held at OKC Fairgrounds (OKCF), whether caused by the actual or passive negligence of the Releases, while aforementioned individual(s) are at OKCF and/or competing, observing, working in, or for any purposes participating at the Oklahoma State Fair. All associates as mentioned herein voluntarily agree to the release and waiver of liability and indemnity agreement as indicated by their submission of entries and their presence at the OKCF. All involved individuals are aware of and understand Oklahoma Statutes, Section 50 of Title 76 pertaining to the Oklahoma Livestock Liability Limitations Act. The person submitting these entries, therein agrees to accept authority to act as agent for actual and/or recorded owner(s) of any/all animal(s) being entered, if applicable, and, in doing so, indicates acceptance of all rules, regulations, liability limitations for all individuals so named as owner, trainer, agent, exhibitor, rider, handler, groom, guest and/or showman. The person submitting these entries accepts responsibility and verifies accuracy of all information provided herein.

This release and waiver shall be governed by and construed in accordance with the laws of the State of Oklahoma.

### NON-LIABILITY TO EXHIBITORS AND PATRONS

1. All property of every character entered for competition, display or any other purpose, or brought to OKCF, by any person, shall be subject to the rules and regulations prescribed by OSF.
2. In no case, shall the OSF, its Board of Directors, officers, agents, representatives, servants, or employees be held responsible for any person coming to OKCF for damage, injury, death or disability by disease, theft, or any other cause.
3. OSF hereby refuses to assume any responsibility for the safety, as bailee or otherwise, of any property brought to OKCF.
4. If the property owners, or others interested in the property, desire protection against loss, damage or injury from fire, or any other cause, must make their own arrangements and pay for such insurance.

### CLAIMS FOR INJURY

1. OSF expressly refuses to assume any liability for injuries to any patron coming to OKCF, and no claims for injury to any person or property shall ever be asserted, or suit initiated or maintained against OSF, its Board of Directors, officers, agents, representatives, servants or employees for said cause by any person having license or privilege to exhibit at OKCF or occupying any space thereon, and it is part of the consideration for such license or privilege that such claims for damage are specifically waived.
2. If any damage, loss or injury to person or property shall be caused by reason of negligence or willful act of any person, firm or corporation, other agent, representatives, servants, or employees having license or privilege to exhibit on OKCF property. OSF shall, in no manner, be responsible therefore, and in case to be subjected to any expense or liability, all persons causing same or liable therefore shall indemnify the OSF.

### TRAFFIC/VEHICLE REGULATIONS

1. Notice is hereby specifically given that in admitting vehicles to OKCF, whether those of exhibitors or patrons, and in permitting the bringing of any other property to OKCF, OSF does not assume any responsibility therefore, or accept the custody thereof, nor assume the personal control thereof in any manner.
2. No motorcycles, ATV's, bicycles, skates, segways, skateboards, rollerblades, scooters or any other powered or unpowered device of a similar nature will be permitted into the OSF operating area (except for ADA needs). Use of individual/private owned golf carts or other similar motorized transport within the OKC Fairgrounds gates is strictly prohibited. Minors without a valid driver's license are not allowed to operate any motorized vehicle.
3. Proper credentials are required at all times for access to parking and inside the OKCF.
4. Passenger vehicles and trailers will be directed to the appropriate parking facilities. Vehicles parked in unauthorized areas will be reported to OSF police and subsequently towed and/or impounded. The owner or driver may be required to pay towing charges to recover the vehicle.

### REMAINING ON GROUNDS OVERNIGHT

1. Overnight parking for motorhomes, recreational vehicles or living quarter trailers is restricted to the RV lots at OKCF. Please visit the OKCF website for current information.





# LIVESTOCK SHOW RULES & REGULATIONS

---

## EXHIBITOR SHOW ELIGIBILITY

---

1. **OPEN SHOW EXHIBITOR ELIGIBILITY:** Shows designated as “Open” are open to all exhibitors of any age and any state residence.
2. **JUNIOR SHOW EXHIBITOR ELIGIBILITY**
  - a. All Junior Show exhibitors, other than the divisions with exceptions noted below, must be a bona fide member of an official 4-H Club or FFA chapter in the United States.
  - b. Junior and youth exhibitors may enter the open shows, for those breeds offering open shows, by filling out the appropriate forms and payment of applicable fees, except where otherwise noted. See the appropriate open division competition guide for entry fees, class schedules, etc.
  - c. **4-H Eligibility:** Youth may enroll in 4-H on August 1 if they are 8 AND in the 3rd grade on September 1. If they turn 8 after September 1 and are in 3rd grade, they will not be eligible to enroll in 4-H until the next 4-H year, but they may participate as a Cloverbud. When a child turns 9, they may join as a 4-H member regardless of grade level. 4-H membership ends on July 31 following the completion of the 12th grade, equivalency of 12<sup>th</sup> grade, GED or having reached the age of 19 on or before September 1, whichever comes first. Graduated high school seniors may complete their 4-H career by exhibiting in the fall fairs. A 4-H member’s enrollment status must have been “active” the previous year to exhibit in the fall fairs.
  - d. **FFA Eligibility:** Any student in grades 8-12 must be regularly enrolled in a year-long course of study in agricultural education at school in order to be eligible to participate in any FFA activity. Students in the seventh grade are not eligible for FFA membership in Oklahoma.
  - e. **Junior Show Exceptions:**
    - i. Division 1007 Junior Brangus: Refer to age restrictions as defined by the International Junior Brangus Breeders Association (IJBBA) rules available at <https://juniorbrangus.com/>.
    - ii. Division 1009 Junior Miniature Hereford Refer to age restrictions as defined by the American Hereford Association (AHA) rules available at <https://hereford.org/>
    - iii. Divisions 1019 & 1020: Junior Shorthorn/ShorthornPlus: Refer to age restrictions as defined by American Junior Shorthorn Association (AJSA) rules available at <https://juniorshorthorn.org/>.
    - iv. Divisions 1218-1219 & 1236-1241: Regional Natural Colored Wool Growers (NCWGA) Show: Refer to age restrictions as defined by the NCWGA rules available at <https://ncwga.org/>
3. **YOUTH SHOW EXHIBITOR ELIGIBILITY:** Youth do not have to be a 4-H or FFA member to participate. Youth must be no older than 19 years old by September 1.
4. Youth who have been declared ineligible to participate in extracurricular activities by their local school administration will be declared ineligible to participate in OSF shows. Youth who are eligible on the first day of the show will be considered eligible through the duration of the OSF. Similarly, youth who are considered ineligible the first day of the OSF will be considered ineligible for the duration of the show. If an exhibitor is ineligible to participate in the OSF for any reason, including rules of the Oklahoma Secondary Schools Activity Association (OSSAA), the animals owned by the exhibitor are also ineligible. Ineligible youth who participate in the show, forfeit all show premiums and awards, and will be subject to disciplinary action as provided by the local school policies. It will be the responsibility of the local school administration to notify OSF management if a particular student is ineligible to participate.
5. **Attire:** It is expected all exhibitors dress neatly with pride and in tradition with each show/division when presenting their animal(s). Exhibitors who are 4-H/FFA members showing in any division must dress in clean pressed jeans, clean shirt with collar and club emblem (4-H/FFA). 4-H/FFA jackets are acceptable but not required. T-shirts and headwear are not allowed. No 4-H/FFA emblem can be worn by an exhibitor not enrolled in 4-H/FFA.

### ANIMAL OWNERSHIP ELIGIBILITY

1. Junior and youth livestock exhibitors must have continuously owned, and personally cared for, their animals since **July 1** of the current year for all breeding beef, dairy, sheep, swine, and goats.
2. For all breeding animals, exhibitors must have registration papers in their own name and be able to produce the originals, no copies. Registration papers must be transferred to the exhibitor’s name by **July 1** of the current year.
3. Any animal that has been sold at a premium auction at any show preceding OSF is not eligible to be exhibited.
4. Animals that are owned jointly or fed on a partnership basis with an adult are not eligible to show in the junior or youth livestock shows at the OSF. 4-H/FFA exhibitors must be the sole owners of any animal they show in the junior or youth livestock shows.

## ENTRY INFORMATION & RULES

### ENTRY DEADLINES/PROCEDURES

1. The online entry process will open **August 1, 2024** and **close at 11:59 p.m. on September 11, 2024** and all entries must be processed online. However, entries are accepted until the close of check-in for the breed/species show (see rule #4 below).
2. **Entries processed and paid for between August 1 – August 25 at 11:59 p.m. will incur no late fees.**
  - a. Any changes, unpaid balances or additions made after August 25 to entries previously submitted will be subject to additional late fees as noted below.
3. **Entries made after August 25 will incur late fees AND will not receive complimentary admission or parking passes.** See the following section [“Livestock Show Fees”](#) for the breakdown of entry fees.
4. Starting September 12, late entries must be submitted via hard copy/entry forms complete with all necessary paperwork and fees directly to the Livestock Show office. No entries will be accepted after check-in closes of the intended show.
5. **Deadline Exceptions for Other Agricultural Competitions:** See specific competition guides and information for Alfalfa Hay Contest, Open Giant Pumpkin Competition, Youth Extemporaneous Speech Contest, **Open Poultry**, and Ag Skillathons.
6. All fees associated with all entries in all shows must be paid via acceptable credit card at the time entries are submitted on ShoWorks. Checks will no longer be accepted.
7. Breed Sanctioning Additions: OSF reserves the right to accept additional entries to attain breed sanctioning rules. Additional fees may apply.

### ENTRY REQUIREMENTS

1. A legible and accurate **W-9 form** must be submitted to the Livestock Show Office on or before **December 15** for all payees who anticipate cumulative premiums that may exceed \$599. It should be made clear as to which exhibitor the form is to be associated. The W-9 form must be filled out according to who will be receiving the money (i.e., exhibitor, parent/guardian). Oklahoma State Fair, Inc is not responsible for procuring this document. Premiums may be forfeited if a correct form is not received by the deadline. Options to return your completed W-9:
  - **Fax** to the attention of the Livestock Office at 405-948-4129
  - **Mail** to: Oklahoma State Fair; Attn: Livestock Office, 3001 General Pershing Blvd, OKC, OK 73107
  - **Upload** here: <https://okstatefair.wufoo.com/forms/m1w8gyed1z0klrj/>
  - Present **in person** to the Livestock Show Office or Administration Building.
2. Any outstanding balance due to denied credit card payments must be paid via cash, cashier’s check, or money order. OSF has the right to ban any exhibitor from future participation should there be a continuous problem.
3. Exhibitors make entries with the distinct understanding that their stock must be brought to the show ring for judging at the request of the superintendent or announcer. Any exhibitor refusing to do so, without just cause, when requested by the superintendent in charge, may forfeit any premium money previously won, and may also be required to remove their stock from OKCF within six (6) hours, after such refusal, possibly barring them from further showing at the OSF.
4. Entry into any OSF event/show automatically authorizes the use of any photographs, videos, audios, cablecasts, or other likenesses, procured while in attendance, of any individual or group associated with any livestock/animal so entered or involved in competition or exhibition at the OSF. Exhibitors are not allowed access to the static photographer’s backdrops or stations without prior receipt of express permission from the appropriate OSF contracted photographer.





## ENTRY REFUNDS

1. Refunds for voluntary scratched or canceled entries will not be granted. Desired refunds for entries scratched or canceled due to exhibitor or animal injury or illness must be submitted on the appropriate cancellation form, to the livestock show office no later than 4 p.m. on the day prior to the first affected class/show. (Contact OSF Livestock Show Office for the appropriate form.) No refunds will be issued for processing fees, stalls, pens, space and/or admission tickets. For refunds of entry fee overpayment: refunds on entry fees will be considered with completion and submission of OSF Credit Refund Request form. No refunds of less than \$10 will be issued.

## ARENA/BARN RULES

1. OSF management will assign all stalls. Exhibitors making entries and not exhibiting will forfeit all fees paid for stalls, pens, space, or admission tickets. No stalls will be used for any purpose other than to stall competing livestock and those stalls that have been assigned to accommodate breed association booths. **Exhibitors placing animals or equipment in any stalls not assigned specifically by OSF management may be expelled from the property, forfeiting any fees paid.** Management reserves the right to return entries when stall or tie out numbers are full.
2. It is permissible for exhibitors to bring their own feed and/or bedding, only straw or coarse shavings, but absolutely no deliveries, bulk or otherwise, from any other supplier may be made to OKCF during the OSF.
3. For your convenience, **feed and bedding** is available at OKCF. Feed and Bedding is located west of Barn 7 and Gate 7. Call the Feed and Bedding office (405-948-6786) for current prices.
4. The use of electric, open flame or space heaters is prohibited. Cooking or any heat/flame food preparation is not allowed in the barns.
5. All fans used in the livestock area are to be attached in the following manner:
  - a. Beef/Dairy: All fans must be hung securely above the tie area or on the stall. No fans will be allowed to operate from the center aisle or side aisle alley.
  - b. Swine/Sheep/Goats/Other: Fans must be attached to the pens or on a pedestal in the pen. No fans will be allowed to operate from any position in the center aisle or in the side alley aisle. There will be no cords across the center aisle and the user must tape down any cords used in the alley.
  - c. Personal Port-a-Cools are prohibited.
6. Any electrical equipment used in the barns must conform to manufacturer's specifications. Management strongly urges the use of fans with a three-wire ground plug. All electrical cords must be Underwriters Approved (UA).
7. Any form of penetrating nails, staples, tacks, screws, wire, fasteners, etc., as well as permanent tape, adhesives, glues, paints, or other markers/marketing materials is prohibited. Any damage or alteration caused by the use of any of these types of items will be charged to the exhibitors and may be cause for expulsion from OKCF. Flyers, advertisements, or any other documents cannot be posted anywhere other than on the specific bulletin boards in the barns, other than those for exclusive use by OSF management.
8. Management will assign tie outs for beef cattle in designated areas only, as space allows.
9. Wash animals in assigned and designated wash racks only. OSF staff and management will indicate appropriate wash racks for each species. Do not wash animals in stalls, walkways, streets, or any other non-designated area.
10. Taking animals into wash racks not allocated to a specific species or failing to remove animals from any arena/stall area and/or wash rack when so instructed will be considered unacceptable action/behavior and subject to immediate expulsion from the OKC Fairgrounds and possible future ban from the Oklahoma State Fair competitions.
11. Transfer animal waste from the stall to poly carts and return poly carts to the main aisle, if moved. Immediately remediate any spills of animal waste during the transfer process and place all spilled animal waste in bins.
12. OSF is committed to maintaining a tobacco-free environment in all its buildings, barns, and arenas. The use of all tobacco products (including cigarettes, electronic cigarettes, cigars, pipes, and smokeless tobacco) is prohibited except in specifically designated areas.



## EXHIBITOR DUTIES and PRIVILEGES

1. The use of any drug or chemical compound that is not approved by the FDA for use in meat animals is prohibited. The illegal administration of approved drugs and compounds is also prohibited. All animals entered in the OSF are subject to blood, urine, and tissue tests by the OSF, FDA and USDA for illegal substances and substances that exceed the acceptable levels established by the USDA, FDA, FARD and EPA. A positive test will result in disqualification.
2. The exhibitor will assume full responsibility for any violation of regulations related to drugs and medications to include withdrawal times and the condemnation of carcasses due to drug rule/regulation violations.
3. Exhibitors are required to keep their spaces or stalls clean. All trash must be placed outside the buildings in a designated area. The aisles and passageways must be kept clear. No demonstrations, trophies, decorations, signs, banners, advertising material or exhibits of any kind are allowed in the aisles or public passageways.
4. If it is ascertained that any exhibitor has made, or caused to be made, any false statement regarding any exhibit, or if any exhibitor shall attempt to interfere with the judges in the performance of their duties, he/she shall be excluded from competing or exhibiting.
5. **Objectionable or disrespectful persons or behavior:** OSF reserves the right to eject or cause to be ejected from OKC Fairgrounds any person(s) it deems objectionable or in violation of any applicable laws, rules or regulations in its sole discretion. These actions may also cause the exhibitor to be banned from entering future Oklahoma State Fair competitions. Unacceptable behaviors include but are not necessarily limited to: a) Entering competition arenas/classes without being duly entered b) Disrespecting, ignoring or failing to follow instructions or directions given by OSF staff, officials, judges and/or superintendents c) causing undue confrontation with OSF staff, officials, judges, superintendents and/or other exhibitors. OSF management may prohibit an exhibitor or exhibitor's employee from competing or exhibiting due to any rude conduct toward an award committee, judge, superintendent, or any official of the OSF.



## PREMIUMS and AWARDS

1. All classes **with one/single entry (entered, shown, and judged) will be eligible for the class entry/per head fee (only) as premium whenever a Premium is indicated.**
2. Premium payouts vary by species/breed. See the specific breed information in the division listings. See applicable aforementioned rules with regard to submission of W-9s.
3. In paying premiums, no evidence of award will be recognized unless the judge and superintendent have properly signed the judging results.
4. Premiums will only be awarded to classes in the premium list and as noted.
5. The judge's decision shall be final, and no appeal will be considered except in case of protest.
6. It is the responsibility of the payee to file, in writing, a claim for lost or incorrect awards/premiums/prize money no later than November 1, 2024. It is also the exhibitor/payee's responsibility to ensure the livestock office is in receipt of a valid and legible W-9 prior to the end of the OSF. Prize money in excess of \$599 will not be processed or paid without a valid W-9 being on file in the livestock show office.
7. Exhibitors will not be allowed to enter the ring with an outstanding debt or without being duly and officially entered and their account being paid in full. Any exhibitor failing to abide by this rule will forfeit any awards or premiums and will be subject to disciplinary action and ban from entering future Oklahoma State Fair competitions. In the event that an exhibitor does show while having a balance due on their account. OSF reserves the right to deduct money owed from any premium money the exhibitor may be awarded.

## DETERMINING BREED SHOWS

1. **MAINTAINING A BREED SHOW:** Breed shows having less than ten (10) entries for two consecutive years will show in AOB division, if applicable, the following year. If an AOB division is not in the show, one will be created or the breed may be removed from the Livestock Show.
2. **TO MAKE A NEW BREED SHOW:**
  - a. **Current Shows in AOB:** Breeds in the AOB division having ten (10) or more entries for two consecutive years will have their own breed show division the following year.
  - b. **New Shows:** Individuals/groups/associations interested in having a new breed show must submit an inquiry to the Livestock Show Office.





## PROTESTS AND APPEALS

1. Any protest must be made in writing and accompanied by a deposit of \$250, which will be forfeited if the protest is not sustained. Protests must be filed with the OSF management within five (5) hours after the award was made. The award is considered “made” when a ribbon or premium card is placed.
2. Protests must contain at least one (1) specific charge, stating at length the facts or rule violated. The protest must list witnesses, with contact information, to substantiate the charge.
3. Management will not consider any complaint or appeal based upon the statement to the effect that the judge(s) are incompetent or have overlooked an animal or article.
4. The right of an exhibitor to appeal the decisions of a judge to management will lie only when it is charged that the award has been made in violation of the rules governing the exhibit, or when it is charged that the decision of the judge(s) has been influenced or interfered with by another.
5. All questions, disputes or differences not provided for under these rules shall be referred to management, whose decision shall be final.

## FIRE REGULATIONS

The area around the exhibit buildings and barns must be kept free of motor vehicles. Roping off or blocking of aisles in the barns is prohibited. This includes blocking aisles with drapes or other obstructions. Exit doors shall not be blocked with any type of equipment (generators, hay, vehicles) even if overhead doors are open. No combustible materials are allowed in any barn. Designated fire lanes must be kept clear. Vehicles parked in unauthorized areas will be towed away and subject to recovery of the towing fee from the owner.

### **OKC CITY FIRE MARSHAL'S OFFICE SPECIAL EVENTS FIRE AND LIFE SAFETY FOR LIVESTOCK:**

1. There shall be **NO** plastic or vinyl material in the barns, covering for stalls, or used for temporary security of retail vendor booths.
2. **NO TWO (2) CONTINUOUS STALLS PER AISLE, SHALL BE COVERED AT ANY TIME.**
3. Only stalls for tack storage, entertainment, or resting can be covered on the top, and will require a working smoke detector. (See #4)
4. The stalls can only be covered in a red rosin construction grade paper or butcher block paper, cheesecloth, either regular or restaurant type grade, or 100% cotton sheet.
5. Any stalls that are covered containing electrical appliances, (refrigerator, microwave, coffee pots) are required to have an operating smoke detector.
6. Any aisle space between stalls can be covered only if equal open space to material does not exceed **4 feet**. If your material is maximum **4 feet**, then the open space between the materials shall be a minimum of **4 feet**.
7. Combustible storefront or stall fronts **shall** be treated in ACCORDANCE WITH NFPA 701 to make them flame retardant and a certificate or similar proof is supplied to the Fire Marshal's Office prior to its application. Material that is being treated by the user must be done in the presence of an Inspector from the OKC Fire Marshal's Office.
8. No portable heaters of any type are allowed in the Oklahoma City Fairgrounds livestock facilities.
9. Awnings shall not extend out from stalls any further than **4 feet**.
10. **NO** tents or canopies are allowed inside the barns, arena, or livestock areas, unless they are NFPA 701 certified. This includes but is not limited to EZ-UP style pop up tents.
11. **NO SMOKING** will be permitted in any arena(s) or Livestock area(s) or barns.
12. **NO** hay, straw, shavings, or similar combustible materials used for decorations are permitted within any facility unless they have been treated in ACCORDANCE WITH NFPA 701 to make them flame retardant and a certificate or similar proof is supplied to the OKC Fire Marshal's Office prior to its application. (Hay or straw for animals is permissible and can be kept in stall areas for feeding and/or bedding).
13. Combustible trash shall be removed at least once a day during the period the arena/exhibit is occupied.
14. **NO PROPANE CYLINDERS** that have LPG in them are allowed inside any public assembly area without approval/permit from OKC Fire Marshal's Office.

Major Gary Jackson  
Sr. Inspector-Special Events  
Oklahoma City Fire Marshal's Office  
Office: 405-297-3418  
Email: [gary.jackson@okc.gov](mailto:gary.jackson@okc.gov)



## LIVESTOCK SHOW FEES

| LIVESTOCK COMPETITIONS ENTRY FEES   |                  |
|---|------------------|
| DESCRIPTION   | FEES             |
| Processing Fee (per exhibitor)  | \$15             |
| <b>^Late Entry Fees</b> (per exhibitor for entries made after August 25)  |                  |
| Late Fee #1: August 25 – September 11   | \$150            |
| Late Fee #2: September 11 until check-in closes   | \$200            |
| <b>Entry Fees</b>   |                  |
| Junior Steers<br>Open Breeding Beef Cattle<br>Open Dairy Cattle   | \$40/Head        |
| Junior Commercial Heifers<br>Junior Breeding Beef Cattle<br>Junior Dairy Cattle   | \$35/Head        |
| Junior Market/Prospect Goats<br>Junior Sheep<br>Junior/Youth Swine<br>Open Llama/Alpaca Show <i>(per applicable class - see individual guide for show fees)</i>   | \$25/Head        |
| Open ABGA Goats<br>Youth & Open Dairy Goats<br>Open Pygmy Goats<br>Open Sheep   | \$20/Head        |
| Miniature Silky Does/Bucks  | \$15/Head/Show   |
| Miniature Silky Wethers   | \$5/Head/Show    |
| Group Classes – <b>All Shows</b>  | \$15/Group Entry |
| <b>Poultry (Double Show)</b>  | <b>\$6/Head</b>  |
| All Showmanship Divisions/Classes<br>Ag Skillathons (Beef and Goat)   | FREE             |
| <p><b>Notes:</b></p> <p>^ Entries processed after August 25 will not be eligible to receive complimentary or purchase additional admissions or parking passes. Exhibitors will need to purchase parking and admission tickets online or at the gate upon arrival.</p> <p><b>Deadline Exceptions for Other Agricultural Competitions:</b> See specific competition guides and information for Alfalfa Hay Contest, Open Giant Pumpkin Competition, Youth Extemporaneous Speech Contest, <b>Open Poultry</b>, and Ag Skillathons.</p> |                  |

### AG SKILLATHONS & SHOWMANSHIP ENTRIES

Participants can enter Ag Skillathons (Beef & Goat) or showmanship divisions by **registering online via QR code or link** provided on division competition guide. These will be separate entries from ShoWorks. There are no entry fees, late entry fees or a processing fee for participation in these events. See individual competition guides for more information.





| NON-LIVESTOCK COMPETITIONS ENTRY FEES  |                     |
|--|---------------------|
| DESCRIPTION  | FEES                |
| Processing Fee (per exhibitor/grower or team)  | \$15                |
| <b>^ Entry Fees</b>  |                     |
| Youth Extemporaneous Public Speaking Contest   | \$10/speaker        |
| Giant Pumpkin Weigh-Off Competition (Non-member)   | \$10/grower or team |
| <b>^ Late Entry Fees</b>   |                     |
| Giant Pumpkin Weigh-Off Competition (Non-member)   | \$10/grower or team |
| <b>Notes:</b><br>^ Entries processed after August 25 will not be eligible to receive complimentary or purchase additional admissions or parking passes. Exhibitors will need to purchase parking and admission tickets online or at the gate upon arrival. |                     |

| OPTIONAL/ADDITIONAL FEES                     |              |
|--|--------------|
| DESCRIPTION                                  | FEES         |
| Animal Substitution Fee                      | \$10/animal  |
| Cattle Tie-Out Fee                           | \$20/tie-out |
| Cattle Equipment Permit (Grooming Chute)     | \$25/permit  |
| Goat/Sheep Equipment Permit (Grooming Stand) | \$15/permit  |

### OPTIONAL/ADDITIONAL FEES

- Equipment Permits: One (1) equipment permit for their grooming equipment (i.e. grooming chute or stand) will be granted to each exhibitor with their entries.**
  - If an exhibitor brings additional grooming equipment, then a permit will need to be purchased for each additional chute/stand.
  - Exception: Cattle fitter guards are permissible for use within the stall space allocated to the exhibitor. No equipment permits necessary.
- Permits for grooming equipment(s) will be distributed to exhibitors when they pick up credentials. Exhibitors who bring additional grooming chutes/stands and fail to purchase an equipment permit will be responsible for payment before the show. If payment is not collected, exhibitors will forfeit the cost from premiums. Permits must be displayed/affixed on the equipment.
- Animal Substitutions:** Unless otherwise defined in the individual breed/species competition guide, the following policies apply to substitution of entries:
  - Must be submitted in writing with the completion of a substitution form and payment of fees.
  - Substitutions will only be accepted for animals of the same breed/species, gender and owned by the same exhibitor/owner as indicated on the original entries. Proof of ownership and substitution fee must be submitted to the livestock show office no later than 4 p.m. on the day before the affected class.
- Cattle Tie-Out Fee:** Exhibitors who would like to tie-out their cattle will need to purchase a permit and use the designated space allotted to them by OSF. One permit is good for one animal from September 11 - September 15.
  - Exhibitors who tie-out but did not purchase a tie-out space will need to relocate their cattle back to their show stall space and will be responsible for cleaning up the tie-out space used.




## EXHIBITOR ADMISSION INFORMATION

- Armband(s), according to the scale below, will be issued to each exhibitor paid in full for entries in open, junior or youth livestock shows.
  - EXCEPTIONS:** Alfalfa Hay Contest, Open Giant Pumpkin Competition, Youth Extemporaneous Speech Contest, **Open Poultry**, and Ag Skillathons. See individual Competition Guides for admission information.
- Armbands must be worn by the exhibitor for entry through Gate 7. Loose, damaged, or non-fitted armbands will NOT be accepted for entry. Lost armbands will not be replaced. Armbands are dated and good for admission, and re-admission, through the appropriate gates during the dates printed on the band. The armband admission scale is per exhibitor, not per junior, youth, or open show:


| ARMBAND ADMISSION SCALE |               |            |
|-------------------------|---------------|------------|
| 1                       | head entered: | 1 armband  |
| 2 to 3                  | head entered: | 2 armbands |
| 4 to 5                  | head entered: | 3 armbands |
| 6+                      | head entered: | 4 armbands |

### EXHIBITOR FAIR ADMISSION INFORMATION

Fair admissions can be purchased through the OSF Box Office (via online or on-location) in advance or at the gate. OSF advance tickets are available for purchase prior to opening day with regular pricing starting opening day.



**SAVE MONEY**  
by checking  
[Hours & Admissions | OK State Fair](#)  
for our **special discount days** and  
**save on admission!**



Purchases made through OSF Box Office will be received via e-ticket. Therefore, the Livestock Office will no longer be selling admissions in addition to entries. Our staff hopes the e-ticket option will be easier for exhibitors to receive and use admissions while at the OKC Fairgrounds.

The following credentials will be available for purchase **with entries before August 25** and will not be available after this deadline:

| LIVESTOCK SHOW OFFICE PURCHASES  |             |
|--|-------------|
| <i>(Available for purchase prior to 8/25)</i>  |             |
| <b>Exhibitor Armband (Week 1 - cap of 400 for sale, Week 2 - cap of 100 for sale)</b><br><i>(limit two (2) additional armbands per week of competition per exhibitor)</i>  | <b>\$35</b> |
| <b>Additional Exhibitor Parking Pass</b><br><i>(limit one (1) additional pass per week of competition per exhibitor per week of competition(s) entered; good for any paid permit parking lot, including Exhibitor Trailer Parking Lot)</i> | <b>\$20</b> |

## ARRIVAL/PARKING INFORMATION

1. Upon review of entries and close of the first deadline, exhibitors will receive an email regarding arrival and parking information to the email address provided with entries. Check your inbox and spam folders for an email address with @okstatefair.com for confirmation and arrival instructions.
2. Animals duly entered in the OSF can be brought to OKCF via Gate 7 by arriving at Portland and Black Gold (3466 Black Gold Drive, Oklahoma City 73107).
3. Gate 7 Operating Hours:
  - a. September 11, noon until 10 p.m.
  - b. September 12 – 22, 6:30 a.m. until 10 p.m.
  - c. Early tack arrival for the first weekend of shows can begin Wednesday, September 11, 2024 at 8 a.m.  
**There will be NO ANIMALS allowed to enter Gate 7 between 8 a.m. to noon.**
4. **MANDATORY:** Valid health papers, as required for each species, must be presented to the Animal Health Inspectors upon arrival at Gate 7. No animals will be allowed entrance without said documentation and inspection. Check the [“Health & Sanitary Regulations” section](#) as well as the specific competition guides for more information on animal health requirements.
5. Only vehicles with entered animals or a one-time delivery of heavy equipment will be allowed through Gate 7. Please do not contribute to the congestion surrounding the barns by attempting to drive in with passenger vehicles.
6. **Exhibitor parking passes** are offered one (1) per registered exhibitor and are for parking of one (1) vehicle with trailer in the exhibitor parking area south/west of the barns or without a trailer, vehicle only, in any other permit/paid lot. This permit is not good for gate admission, and it does not guarantee a parking place and will be issued for the period of time surrounding the dates of entered exhibition only. Subject to availability and rules as stated on the hangtag. Visit <https://okstatefair.com/information/parking-and-trams> for additional parking information.

## AG TEACHER/LEADER ADMISSION

1. OSF provides complimentary admission and parking to Oklahoma FFA agricultural educators and Oklahoma 4-H extension agents who submit a request **by midnight on Monday, September 9, 2024**. Links to the forms will open on July 1, 2024. Fill out the relevant links below to receive OSF admission:
  - a. Livestock Judging Contest - Admission & Parking Request Form
    - i. <https://forms.office.com/r/yE7gmxFqiM>
  - b. Dairy Judging Contest - Admission & Parking Request Form
    - i. <https://okstatefair.wufoo.com/forms/z1r7qzbi0vvqbnk/>
  - c. Livestock Show & Exhibits - Admission & Parking Request Form
    - i. <https://okstatefair.wufoo.com/forms/z1gnvfvk0l2xl3a/>
2. Teachers who do not submit requests for admission by the deadline(s) may not receive complimentary admission and parking. Any extra admissions at the Show Office will be distributed on a first come, first serve basis.





## ANIMAL WELFARE POLICY

OSF is committed to the humane treatment of all animals exhibited. Every possible precaution is taken to ensure the animals' safety and wellbeing. Any exhibitor found using unethical practices or mistreating an animal at the OSF will be immediately removed from the premises and reported to the proper authorities. All privileges will be withdrawn, attraction fees will be prorated, and premiums will not be awarded.

### ANIMAL EXHIBITS, SHOWS AND COMPETITIONS

It is the responsibility of the owner/exhibitor/handler/agent for each animal being brought to OKCF to be aware of and adhere to the most current rules and regulations regarding animal transportation, disease control, vaccinations, and health documentation requirement, in accordance with the Oklahoma Department of Agriculture, Food and Forestry, Animal Industry Services. For the most current information, call 405-522-6141 or access the Animal Industry State Veterinarian – ODAFF ([ok.gov](http://ok.gov)) and scroll down to the section for Animal Movement and Importation.



Any animal not cleaned or fitted to show as a true representative of the breed it represents shall be disqualified, and the judges will not award premiums on such animals. Exhibitors are requested to see that their attendants are neatly and appropriately dressed when their animals enter the show ring. Herds persons are requested to present an attractive and appealing barn exhibit(s), by keeping their stall areas neat and clean, keeping the spectator walkways clear of all straw, feed, etc., refraining from cooking in the barns, keeping audio equipment at a low volume, following any fire and life-safety rules, and maintaining positive behavior at all times.

- A. **Summary of Program:** Exhibitors show animals for many reasons. The exhibition provides education to the public about livestock and farm animals, as well as the overall agriculture industry. Competition in the show ring provides a forum for comparison of livestock animals, based on selected or desired characteristics and genetics. The results contribute to breeding and overall species improvement. These selected characteristics are reflected in the market and usually follow consumer demand for a certain type of product, for example: leaner meat. The Fair also provides advertisements for the breeders and owners of the animals. The 4-H and FFA programs and other junior organizations teach valuable skills to youth, such as finance management, responsibility, decision making and leadership.
- B. **Education:** The OSF has several educational exhibits and programs designed to educate, entertain, and inform the public about livestock and agriculture. The Fair utilizes judging commentators during the livestock shows to involve and inform the public about what is taking place in the show ring. Commentators cover what the judge is looking for in the animals, judging terminology (or “reasons”), as well as fun and educational information about the judged animals. The junior livestock exhibitors display educational exhibits in the livestock area during the Fair. The Fair has a special livestock exhibit area designed to provide species diversity and special education.
- C. **Livestock Exhibits**
  1. Exhibitor Guidelines
    - a) The Fair expects exhibitors to be knowledgeable about exhibit rules, about their projects and always to be prepared to answer questions. The exhibitor’s role is that of an ambassador.
    - b) Exhibitors should learn additional details about animals and their roles in society. For example: it is fun and interesting to share by-product uses and other facts with the public. The Fair encourages educational exhibits in barns.
    - c) The Fair expects the exhibitors to cooperate with the AgriBusiness department, assistants, barn crews, the Fair management, and any appointed volunteers. The Fair also expects good sportsmanship, conduct and open communication.
    - d) Notify the AgriBusiness department if there is a confrontation with animal activists, or if there is someone approaching exhibitors and asking questions that make the exhibitors uneasy. Also notify the AgriBusiness department if someone who is unfamiliar or looks suspicious is taking photographs or video footage of the animals.

## 2. Livestock Exhibit Guidelines

- a) Keep the needs of the animals as the number one priority with regard to the following:
  - Food and water are clean and fresh.
  - Stalls are clean, with fresh bedding, and free of debris and waste.
  - Animals are clean and well groomed.
  - Transportation is safe and clean. Use care when loading and unloading.
  - Stalls have enough space to prevent crowding, fighting or discomfort.
  - Animals are tied in the stalls with enough slack in the rope so they may lie down.
  - Use proper grooming techniques and equipment when preparing the animals for showing, to cause the least amount of discomfort to the animal.
  - The management will not tolerate any practices deemed inappropriate, unethical, or inhumane. Report any sick animal immediately to the proper authority who may suggest that the exhibitor contact a veterinarian.
- b) Feed shall be appropriate for the animal's age, weight, and species. Exhibitors should read all feed labels for appropriate use and portions. Adhere to all proper withdrawal times if using medicated feeds. Follow the requirements of the Food and Drug Administration (FDA) dosages and withdrawal times of drugs, see *Drug Residue Policy*. The Fair prohibits any unnatural, inhumane weight control prior to weigh-in.
- c) Exhibitors should know the proper use of all equipment and exhibit safety awareness. This includes removing equipment from walkways, so it is not a hazard to people or animals. Tack areas, stalls, pens, and cages shall be neat and clean, with equipment put away in tack boxes or stored out of the way. Exhibitors shall use all equipment for approved and legal uses only.

### EQUINE SHOWS AND COMPETITIONS

USDA AND APHIS (Animal and Plant Health Inspection Services), under the Horse Protection Act, which prohibits making a horse sore to enhance its performance, regulate horse shows. OSF also regulates horse shows regarding prohibited substances and the drugging of horses. USEF members and affiliated shows are subject to the rules and industry review program administered by the United States Equestrian Federation. Shows may also be subject to standards set by the individual breed associations, when and if applicable.



### ANIMAL ATTRACTIONS AND EDUCATIONAL EXHIBITS

Fair management contracts and supervises animal attraction and educational exhibits. Both animal attractions and educational exhibits are required to provide educational material about their animals and their care to the public. Fair management encourages interaction with the public. This may be a criterion for issuing a contract.

Prior to opening to the public, a Fair designated veterinarian may inspect each animal exhibit. The veterinarian may also make periodic checks throughout the Fair. Each animal exhibit will designate a representative to be responsible and to be available during the Fair operating hours to answer questions, talk to the media or respond to an emergency

#### A. General guidelines for care

- 1) Exhibit staff shall be available at all times. Signs will be posted informing the public of acceptable behavior in any petting facility.
- 2) The staff should be familiar with basic animal husbandry practices.
- 3) Keep animals groomed and clean at **all** times. Keep feed and water receptacles clean and free of debris. The exhibitor will clean animal stalls or pens daily. Properly dispose of manure and used bedding in the appropriate receptacles or areas. Replace old bedding with fresh material.
- 4) Alternate and give rest periods to the animals especially during hot weather. The resting pens and working area shall have shade with proper ventilation.
- 5) Feed animals a nutritionally balanced diet as appropriate and with consideration to the animal's age, weight, and species. Water regularly when working and have clean water available in resting pens.
- 6) The facility operator should make an effort to control flies in the exhibit and resting areas. Proper and prompt disposal of manure and used bedding is beneficial to this effort.
- 7) Exhibitors shall use all equipment for approved and legal uses only. The management will not tolerate any practices deemed inappropriate, unethical, or inhumane.



- 8) Report any sick or injured animal immediately to Fair management, who may suggest that the exhibitor contact a veterinarian.
  - 9) All animals are required to have a current, within 30 days, certificate of veterinary inspection. Many species are required to have negative tests against certain diseases. It is the responsibility of the exhibitor to contact the Oklahoma Department of Agriculture, Food and Forestry at 405-522-6141 or <http://ag.ok.gov> to make sure all required testing has been performed.
- B. Animal Petting Facilities  
The design of an animal petting facility should help educate the public about different types of animals and animal care while regarding the animals' basic needs, including time away from the public. It should also provide a rare opportunity for contact and interaction with animals. Petting zoos may feature exotic animals not typically raised on farms.
- C. Pony Rides
- 1) The ponies should have a pad or cushioned surface such as lawn or shavings to prevent ponies from walking on the ground or asphalt for extended periods.
  - 2) The pony ride should be a safe site, away from potential, unexpected noises, and sudden movements.
  - 3) Alternate the ponies to allow for reasonable rest periods.
  - 4) Water the ponies regularly.
  - 5) Do not expose the ponies to the sun for extended periods without breaks for rest, shade, and water.
  - 6) All equine are required to have a current Certificate of Veterinary Inspection (within 30 days) and a current negative Equine Infectious Anemia test (within 12 months).
- D. Pig Races
- 1) Pig races provide fast-paced family entertainment and crowd interaction. The USDA regulates pig races and requires an exhibitor license for performing animals. The Oklahoma Department of Agriculture, Food and Forestry requires certificates of veterinary inspection, and negative tests for brucellosis and pseudorabies for pigs to enter the state. The owner/operator of the pig races may need to produce current, and correct, copies of all CVIs and results of blood tests as requested by OSF management, or in compliance with their contract. The owner/operator of the pig races may need to produce current, and correct, copies of all licenses as regulated by the USDA. Operators should maintain itinerary or schedule of OSF dates to document past and future exhibitions. Pig races shall follow the general policies outlined in this manual, as well as the appropriate feed for the piglet's age.
- E. Other Animal Exhibits (not previously listed)
- 1) It is up to the exhibitor of animal attractions including: any owner exhibiting animals doing tricks or shows; carnivals and concessionaires who exhibit regulated animals; anyone who uses regulated animals to promote or advertise goods and services; animals used to promote photographs or photography; and anyone exhibiting farm animals for nonagricultural purposes to have knowledge of and obtain in a timely manner any required licenses.

## ANIMAL CARE POLICY DISCIPLINE AND VIOLATION NOTICE

- A. Fair Management relies on staff members, volunteers, exhibitors, and the public to report any situations that may be potential policy violations.
- B. Fair Management will investigate and determine the severity of all complaints and concerns.
- C. If there is a violation of the Animal Welfare Policy, the exhibitor will receive a verbal warning and the steps needed to correct the violation.
- D. With a second violation, the exhibitor will receive a written violation notice and Fair Management may call the Humane Society or veterinarian, at the exhibitor's expense, depending on the severity of the violation. The removal of animals and/or exhibitors from OKCF may become necessary.
- E. A record of the verbal violation warning, and copies of the violation notices will become part of the exhibitor's file. Fair Management will consider these before issuing another contract.
- F. Any other public or staff complaint filed will become part of the exhibitor's file. The exhibitor will receive copies.
- G. Fair Management reserves the right to disqualify any competitive exhibitors in violation of the animal care policy from any awards and premiums.





# OKLAHOMA STATE FAIR ANIMAL CARE POLICY VIOLATION NOTICE

VIOLATOR:

---

AREA:

---

---

---

CONTACT NUMBER: \_\_\_\_\_

DATE OF VIOLATION: \_\_\_\_\_

DESCRIPTION OF VIOLATION:

---

---

---

---

---

---

---

ACTION TAKEN:

---

---

---

---

---

---

WITNESS: \_\_\_\_\_

DATE: \_\_\_\_\_

CC: Fair Manager, Exhibit Supervisor



---

## HEALTH & SANITARY REGULATIONS

---

### OVERVIEW

1. The State Board of Agriculture provided the following rules and regulations to the Fair. These rules will govern admission of livestock at the OSF.
2. An official of the Animal Industry Division, Oklahoma Department of Agriculture, Food and Forestry, will be present during livestock entry times and will check all Certificates of Veterinary Inspection (CVI) required under the following regulations.
3. The Animal Industry Division, Oklahoma Department of Agriculture, Food and Forestry, must validate all Certificates of Veterinary Inspection before animals are given stall or pen space in the barns.
4. An official Certificate of Veterinary Inspection (CVI) must accompany all show animals, except poultry can instead of a 9-3 form (see “Poultry” below). The official CVI or 9-3 form must be issued within 30 days of arrival and shall be available at all times to the representatives of the Animal Industry Division.
5. All out-of-state livestock, including domesticated poultry, birds and rabbits must meet Oklahoma’s import requirements. Import requirements may be obtained by going to Animal Industry State Veterinarian – ODAFF (ag.ok.gov) and scrolling down to the link to the Animal Movement and Importation section.
6. All animals must be free of infectious, communicable, or contagious diseases and if such disease is found, it will be cause for removal of the animal(s) from exhibition.

### CATTLE

1. Cattle must be accompanied by an official Certificate of Veterinary Inspection, issued within 30 days of arrival that shows complete description of livestock as to age, sex, breed, and individual identification, such as tattoo or ear tag. Cattle from out-of-state are required to have an official USDA identification tag as required by the Federal Animal Disease Traceability rule.
2. No tuberculosis (TB) test is required for beef or dairy cattle from Oklahoma.
3. **All lactating DAIRY cattle:** All lactating dairy cattle planning to exhibit must contact their veterinarian to collect a milk sample and submit it to the Oklahoma Animal Disease Diagnostic Laboratory to be tested for HPAI
  - a. A. The sample must be collected within 7 days of movement to the exhibition
  - b. Negative results must be listed on a Certificate of Veterinary Inspection with official identification. The CVI must be completed within 7 days of entry to the exhibition.
4. **Out-of-state BEEF breeds:** Must originate from a TB free state, a TB Accredited Free Herd or must be TB test negative within 60 days of arrival at the show if over 6 months of age.
  - a. **Areas not Tuberculosis Free as of June 1, 2024 are the Michigan counties of Montmorency, Alpena, Oscoda, and Alcona.**
5. **Out-of-state DAIRY breeds:** Must originate from a TB free state, a TB Accredited Free Herd or must be TB test negative within 60 days of arrival at the show if over 6 months of age.
  - a. **Areas not Tuberculosis Free as of June 1, 2024 are the Michigan counties of Montmorency, Alpena, Oscoda, and Alcona.**
6. Any sexually intact dairy animal 6 months of age or older changing ownership within the state of Oklahoma is required to have a negative TB test within 60 days before change of ownership.

### SHEEP and GOATS

1. Must be accompanied by an official Certificate of Veterinary Inspection. The CVI must include a statement indicating the animal to have been inspected and found free of scabies and other external parasites.
2. All sheep and goats must be individually identified with one of the following:
  - a. Official USDA ear tag
  - b. Official breed registry tattoo or microchip, (only if the animal is accompanied by a registration certificate).

### **ILLEGIBLE TATTOOS WILL BE CONSIDERED AS NO IDENTIFICATION.**



## LLAMAS and ALPACAS

1. Each animal must be accompanied by an individual Certificate of Veterinary Inspection (CVI), stating that the animal is free of infections and contagious disease within 30 days before arrival at the show.

## SWINE

1. Must be accompanied by an official Certificate of Veterinary Inspection, (CVI), processed and issued within 30 days of arrival, that shows official individual identification by an 840 electronic tag, and complete description of livestock as to age, sex, and breed. **All swine must have a premises ID listed on the CVI.**
2. **In-state swine** must have a negative test for Brucellosis and Pseudorabies after **May 15, 2024** or be from a Validated Brucellosis/Qualified Pseudorabies Free Herd and be exhibited by the owners and/or immediate family members. The last quarterly test date (July test) must be listed on the CV  
  - a. **Breeding gilts** should be quarantined and retested 30 days after the show before being commingled with other breeding swine.
3. **Out-of-state swine** must have a CVI, an entry permit, proof of negative test for Brucellosis and Pseudorabies within 30 days of entry to the show or be from a Validated/Qualified Herd with verification of the last quarterly test within 3 months and be identified with an official individual USDA Ear Tag.

## DOGS

1. Must be accompanied by an official Certificate of Veterinary Inspection.
2. All dogs over 3 months of age must have been officially vaccinated against rabies within 12 months of arrival.
3. All dogs must have been vaccinated against distemper, hepatitis, leptospirosis, and parvovirus within the previous 12 months.

## EQUINE

1. All horses and other equine must be accompanied by a Certificate of Veterinary Inspection or valid Extended Equine Certificate of Veterinary inspection showing age, breed, sex, and markings to positively identify the animals, including all vaccinations, date, and result of required tests, and issued within 30 days of arrival and an official document verifying a negative test for Equine Infectious Anemia showing a test date within 12 months prior to exhibition.
2. Nursing foals less than 6 months of age, accompanied by their negative tested and documented dams, are exempt from test requirements.
3. The laboratory conducting the test must be approved by APHIS, USDA. Both aforementioned documents must clearly identify the animal(s) listed and be presented upon arrival before the animals can be admitted to the grounds or unloaded from the transport vehicles.

## POULTRY

1. In-State poultry:
  - a. Either be NPIP Certified OR
  - b. Have a Negative PT test (9-2 Form) less than 90 days prior to the show date and have a permanent leg or wing band.
2. Out-of-state poultry:
  - a. Either be NPIP certified and have a Form 9-3 less than 30 days prior to the show OR
  - b. Have a negative PT test with Form 9-2 less than 90 days prior to show and have a permanent leg or wing band and a Certificate of Veterinary Inspection (CVI) less than 30 days prior to the show date.

---

## IMPORTANT REMINDER

---

For the most current information, call 405-522-6141 or access the State Veterinarian's website at [www.ag.ok.gov/Divisions/Animal-Industry-State-Veterinarian](http://www.ag.ok.gov/Divisions/Animal-Industry-State-Veterinarian) and scroll down to the "Animal Movement and Importation" section.

**All animals** must be accompanied with a CVI (except poultry) and all other required documentation mentioned above or they **will not** be allowed to enter the fairgrounds.





---

## SHOW RING CODE OF ETHICS

---

Believing it is in the best interest of all livestock breeders to maintain a reputation of integrity and to continue to present a wholesome and progressive image in the show ring, the following list of practices are considered unacceptable in the presentation of livestock. The use of such practices or procedures is, therefore, considered a violation of the rules and regulations governing the OSF.

The following list of practices are considered unacceptable in the presentation of livestock:

1. Misrepresenting the age of the animal for the class in which it is shown.
2. Treating or massaging any part of the body internally or externally with an irritant, counter-irritant or other substance to temporarily straighten a weak back or loin or to produce unnatural animation.
3. Minimizing the effects of crampiness by feeding or injecting drugs, depressants or applying packs, or using any artificial contrivance or therapeutic treatment exempting normal exercise.
4. Striking the animal to cause swelling.
5. Surgery or other procedure performed to change the natural process of growth, maturation, contour, or appearance of any animal, to include teeth, is prohibited. Not included is removal of teats or horns, clipping and dressing of hair, and trimming of hooves.
6. Insertion of foreign material under the skin.
7. Any attempt to change the natural color of an animal, either purebred or crossbred, by changing the color or adding false hair, fleece or skin at any point, spot, or area of the animal's body.
8. The use of alcoholic beverages in the feed or administered as a drench.
9. The practice of artificial filling by pumping or any other device is prohibited.
10. Administration of a drug, of any kind or description, internally or externally, prior to entering the show ring, except for treating a recognized disease or injury and for tranquilizing bulls that may otherwise be dangerous or females in heat. For the purpose of these rules, the term "legal drug" shall mean any substance, the sale, possession or use of which is controlled by license under federal, state, or local laws or regulations and any substance commonly used by the medical or veterinary professions. The use of any chemical and/or compound that is not approved by the FDA for use in meat producing animals and the illegal use of approved chemicals and/or compounds are prohibited. All animals shall be subject to tests for foreign substances that exceed the acceptable levels established by the USDA, FDA, or EPA. A positive test will result in disqualification, forfeiture of any premiums and/or awards, and will exclude the exhibitor from future competition at the OSF. Licensed veterinarians will administer all medications only.
11. Balancing the udder by any abnormal means including the use of a mechanical contrivance or injection of fluid or drugs. Setting the teats and/or occluding, sealing the ends, with a mechanical contrivance or with the use of a chemical preparation. Treating or massaging the udder or its attachments with an irritant or counterirritant. The use of common products such as fly spray, ointment, or liniment in excess to the extent that it is irritating is included as an irritant unless required to reduce edema at the time of calving.
12. Criticizing or interfering with the judge, or other exhibitors, breed representatives or show officials before, during or after the event may result in an individual or group being expelled, placed on probation, declared ineligible, or barred from exhibiting at the event.

Any violation of the rules and regulations designed for the individual shows or the show ring code of ethics may result in forfeiture of all premiums and awards, disqualification, expulsion or probation of the exhibitor, organized group, individual or livestock involved. Probation, disqualification, expulsion, or other disciplinary action of OSF management will be final. Such action will require application for readmission under such terms as OSF management may prescribe before the group or individual is allowed to exhibit at future events.

The OSF is a member of the following show support organizations: North American Livestock Show and Rodeo Managers Association; and International Association of Fairs and Expositions. Violations at this show may affect the eligibility of the individual, group or sponsoring organization from participation at other shows that are also members of these organizations. The names of anyone in violation will be released to the other Fairs and Expositions.





**SWINE**  
**COMPETITION GUIDES**







---

## SWINE HEALTH DOCUMENTATION REQUIREMENTS

---

1. Must be accompanied by an official Certificate of Veterinary Inspection, (CVI), processed and issued within 30 days of arrival, that shows official individual identification by an 840 electronic tag, and complete description of livestock as to age, sex, and breed. **All swine must have a premises ID listed on the CVI.**
2. **In-state swine** must have a negative test for Brucellosis and Pseudorabies after **May 15, 2024** or be from a Validated Brucellosis/Qualified Pseudorabies Free Herd and be exhibited by the owners and/or immediate family members. The last quarterly test date (July test) must be listed on the CV.
  - **Breeding gilts** should be quarantined and retested 30 days after the show before being commingled with other breeding swine.
  - **Out-of-state swine** must have a CVI, an entry permit, proof of negative test for Brucellosis and Pseudorabies within 30 days of entry to the show or be from a Validated/Qualified Herd with verification of the last quarterly test within 3 months and be identified with an official individual USDA Ear Tag.

---

## SWINE BREED CHARACTERISTICS GUIDELINES

---

### Berkshire

- A black and white animal with erect ears exhibiting Berkshire characteristics.
- A Berkshire must have white on all four (4) legs, face, and tail, unless the tail is docked. One (1) of the white leg points may also be missing.
- Must be ear notched within seven (7) days of birth.
- A Berkshire must NOT have a solid white or solid black face from the ears forward.
- A Berkshire must NOT have a solid black nose - rim of nose.
- White is allowed on the ears, but NO solid white may appear.
- An occasional splash of white may appear on the body.

### Chester White

- Must possess Chester White breed characteristics.
- Must be ear notched within seven (7) days of birth.
- Must be solid white in color, no color on the skin larger than a silver dollar, no colored hair.
- Any skin pigmentation, other than white, that exceeds five (5) in number is disqualified.
- Ears must be down and medium size.
- Any signs of weighted ear tags or evidence of past existence of such tags are determined to be not permissible and are grounds for disqualification.

### Duroc

- Must be red in color and possess Duroc breed characteristics.
- Ears must be down and medium size.
- Must be ear notched within seven (7) days of birth.
- Must NOT have any white or black hair on the animal.
- Must NOT have more than three (3) black spots on the skin, none of which can be larger than 2 inches in diameter.
- Must NOT have any shading or indication of a belt.

### Hampshire

- Must possess Hampshire breed characteristics.
- Ears must be erect and not rounded.
- Must be black in color with a white belt starting on the front leg. The belt may be partially or totally encircling the body.
- Must be ear notched within seven (7) days of birth.
- Must NOT have any white hair or indications of streaking on the forehead.





- Must not have any red hair.

#### Hereford

- Must be red, light, or dark however, with a white head, ears, and 4 white legs.
- Ears must be at least broken forward.
- Hereford Market Animals. Shall be eligible with at least 50% of a white face, at least 50% red body, at least 2 white feet. This will be known as the \*50-50-50 rule\*.
- Must be ear notched within seven (7) days of birth.
- Reporting of belts and black spots in breeding animals' offspring. Belts and black spots do appear occasionally. It is the job of the breeders and members to do their best to eliminate this from their herds.

#### Landrace (Gilts only eligible to show)

- Must be white in color and possess Landrace breed characteristics (ears must be down).
- Must be ear notched within seven days of birth.
- Must NOT allow any color hair other than white.
- Must NOT allow more than three (3) spots of skin pigmentation.
- Must NOT allow any spot of skin pigmentation larger than one U.S. minted quarter.
- Must have no evidence of an extra dewclaw.

#### Poland China

- Must possess Poland China breed characteristics.
- Must be ear notched within seven (7) days of birth.
- Must be black with six (6) white points - face, feet, and tail - with an occasional splash of white on the body. A hog may not possess more than one (1) black leg and to be determined as a Poland China. Tail docking is permissible, eliminating that white point.
- Must have ears down.
- Must NOT have evidence of belt formation.
- Cannot have any red or sandy hair and/or pigment.
- Hogs that have weighted ear tags or evidence of such tampering are ineligible.
- Must NOT have any colored hair, other than white or black.
- Must NOT have any red or blue colored skin pigmentation larger than a silver dollar.
- Must NOT have masking above the eyes larger than a silver dollar.
- Any signs of weighted ear tags or evidence of past existence of such tags are determined to be not permissible and are grounds for disqualification.

#### Spot

- Must possess Spot breed characteristics.
- Must be black and white in color.
- Must be ear notched within seven (7) days of birth.
- Ears must be down and reasonably sized.
- Any red tinted or sandy brown spots are ineligible.
- No solid black head from ears forward.
- No distinct white belt pattern - hair or skin - encircling and extending down and onto each shoulder.
- Any signs of weighted ear tags or evidence of past existence of such tags are determined to be not permissible and are grounds for disqualification.

#### Yorkshire

- Must be white in color and possess Yorkshire breed characteristics.
- Ears must be erect.
- Must be ear notched within seven (7) days of birth.
- Must NOT have any colored hair, other than white.
- Must NOT have colored skin pigmentation larger than a silver dollar.
- Must NOT have masking above the eyes larger than a silver dollar.



## YOUTH SWINE SHOWMANSHIP

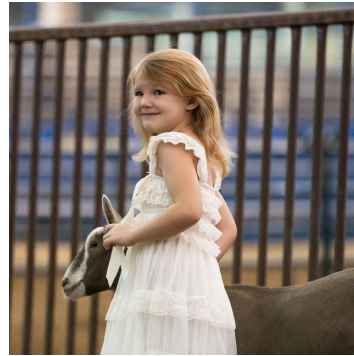
Superintendent: Bray Haven



**Entry Deadline:** Register online via QR code or link before show start time (*see below*)

**Judged in Barn 8 Arena:** September 13 @ 3 p.m.

Refer to the Rules and Regulations sections for important information including animal health requirements, liability agreement, additional fees, admissions, deadlines, etc.



### REGISTER HERE!

(Registration opens August 1<sup>st</sup>)

<https://form.jotform.com/231016228278150>





## ADDITIONAL RULES

- All animals and exhibitors must be duly entered into an individual class within each Junior/Youth division species shows.
- Showmanship grade is as of the date of the show.
- Superintendents have the right to divide each division into heats.
- Contestants will be divided into the following grade categories:

| CLASSES |  | AWARDS                    |
|---------|--|---------------------------|
| 01.     | Senior Exhibitors (Grades 10 - 12)                     | Ribbons                   |
| 02.     | <b>Division 1 Champion and Reserve</b>                 | Rosettes                  |
| 03.     | Intermediate Exhibitors (Grades 7 - 9)                 | Ribbons                   |
| 04.     | <b>Division 2 Champion and Reserve</b>                 | Rosettes                  |
| 05.     | Junior Exhibitors (Grades 3 - 6)                       | Ribbons                   |
| 06.     | <b>Division 3 Champion and Reserve</b>                 | Rosettes                  |
| 07.     | *Pee Wee Exhibitors – (Grades K - 2)                   | Mini-Rosettes             |
| 08.     | <b>Overall Division Champion &amp; Reserve Showman</b> | Banner, Medallion & Award |

## \*PEE WEE SHOWMANSHIP CLASS RULES

1. Children must be at least 4 years old, but not more than 7 years old, as of the date of the show.
2. Written parent/guardian permission is required. Consent forms are available at the show and must be signed before entering the show ring.
3. No entry fee, however, the exhibitor and family will be required to purchase a ticket to the Oklahoma State Fair.
4. Participant does not need to own their animal but is responsible for finding an animal and necessary equipment to use. If the exhibitor and family choose to haul their own animal to OKC to exhibit in this competition, the exhibitor will need to adhere to the [Health and Sanitary Regulations](#) to enter the grounds with the animal.
5. Participants will not be eligible to compete for Overall Champion or Reserve Showman.
6. If rules are not followed, the ringmaster will ask the participant to leave the show ring.

## AWARD INFORMATION

- Each Pee Wee participant will be given a mini-rosette participation ribbon.
- Ribbons will be awarded to the top 10 exhibitors in each class, excluding championships and Pee Wee.
- Overall division champion and reserve showman will receive a banner, OSF medallion, and a special award.





## YOUTH BREEDING GILTS (DIVISIONS 1402 – 1414)

Superintendent: Bray Haven



**Entry Deadline:** August 25 (*Late fees apply after the deadline.*)

**May Start Arriving:** September 11 @ Noon

**Animals in Place:** September 13 @ 1 p.m.

**Check-In/Cards Due:** September 14 @ 3 - 4 p.m.

**Judged in Barn 8 Arena:** September 15 @ 9 a.m.

**Released:** After completion of showing



*2023 Grand Champion Gilt  
owned by Alyssa Moore*

**Refer to the Rules and Regulations sections for important information including animal health requirements, liability agreement, additional fees, admissions, deadlines, etc.**

### ADDITIONAL RULES

1. An exhibitor may enter multiple animals. However, exhibitors may only bring and show a maximum of three (3) breeding gilts.
2. All swine must have a premise ID and it must be listed on the health certificate.
3. 4-H/FFA membership is not required. The age of youth exhibitors, as of January 1, 2024, must be a minimum of 5 years and a maximum of 20 years.
4. Exhibitors must review the health requirements in order to arrive on grounds and show.
5. All purebred gilts must have pedigrees. All pedigrees must be officially transferred into the exhibitor's name by the respective breed association prior to July 1, 2024. Pedigrees that are simply signed on the back by the respective breeder and not officially transferred into the exhibitor's name by the breed association will not be accepted.
6. The powdering, oiling, painting, and dressing, other than water, of Junior/Youth Swine will not be allowed. Clipping is allowed in the barns; however, no snaring will be allowed.
7. The following breeds will be offered:

Division 1417 Berkshire Breeding Gilt

Division 1418 Chester White Breeding Gilt

Division 1419 Duroc Breeding Gilt

Division 1420 Hampshire Breeding Gilt

Division 1421 Hereford Breeding Gilt

Division 1422 Landrace Breeding Gilt

Division 1423 Poland China Breeding Gilt

Division 1424 Spot Breeding Gilt

Division 1425 Yorkshire Breeding Gilt

8. Any animal exhibited in the wrong class will be disqualified.
9. Exhibitors must show in clean pressed jeans, clean shirt with collar and/or club emblem (4-H/FFA). 4-H/ FFA jackets are acceptable, but not required. Distressed jeans or jeans with extensive holes, t-shirts, and headwear are not allowed.
10. See [Youth Swine Showmanship Division Guide](#) for information on showmanship.

## CLASSES

- Purebred classes will be broken by age by show management.
- No gilts farrowed before January 1 or after April 30, 2024 will be allowed to show.

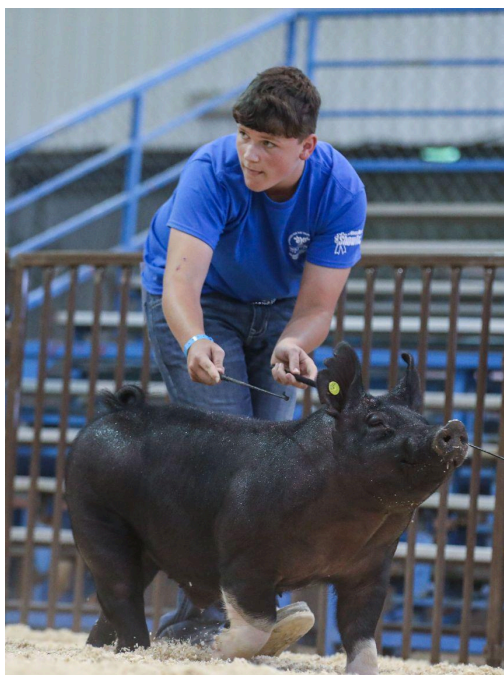
## AWARD/PREMIUM INFORMATION

- Ribbons will be awarded to the top 10 in each class, excluding championship classes.
- Class premiums are based on the number entered and shown in each class, excluding championship classes.

| *CLASS PREMIUMS | 1 <sup>st</sup> | 2 <sup>nd</sup> | 3 <sup>rd</sup> | 4 <sup>th</sup> | 5 <sup>th</sup> |
|-----------------|-----------------|-----------------|-----------------|-----------------|-----------------|
| 2 head          | \$40            |                 |                 |                 |                 |
| 3 – 4 head      | \$40            | \$20            |                 |                 |                 |
| 5 – 6 head      | \$40            | \$30            | \$20            |                 |                 |
| 7 – 8 head      | \$40            | \$30            | \$20            | \$10            |                 |
| 9 or more head  | \$50            | \$40            | \$30            | \$20            | \$10            |

**\*All classes with one/single entry (entered, shown, and judged) will be eligible for the class entry/per head fee (only) as premium whenever a premium is indicated.**

| AWARD                    | 1 <sup>st</sup>       | 2 <sup>nd</sup> |
|--------------------------|-----------------------|-----------------|
| Division Breed Champions | \$50 & Rosette        | \$25 & Rosette  |
| Overall Grand Champions  | \$500, Banner & Award | \$250 & Banner  |





## YOUTH COMMERCIAL GILTS (DIVISIONS 1415-1516)

Superintendent: Bray Haven



**Entry Deadline:** August 25 (*Late fees apply after the deadline.*)

**May Start Arriving:** September 11 @ Noon

**Scales Open:** September 12 @ 10 a.m.

**Animals in Place/Cards Due:** September 13 @ 1 p.m.

**Judged in Barn 8 Arena:** September 14 following Jr. Market Barrows

**Released:** After completion of showing



*2023 Grand Champion Gilt  
owned by Isaiah Gamez*

**Refer to the Rules and Regulations sections for important information including animal health requirements, liability agreement, additional fees, admissions, deadlines, etc.**

### ADDITIONAL RULES

1. An exhibitor may enter multiple animals. However, exhibitors may only bring and show a maximum of three (3) commercial gilts.
2. All swine must have a premise ID and it must be listed on the health certificate.
3. 4-H/FFA membership is not required. The age of youth exhibitors, as of January 1, 2024, must be a minimum of 5 years and a maximum of 20 years.
4. Exhibitors must review the health requirements in order to arrive on the grounds and show.
5. The powdering, oiling, painting, and dressing, other than water, of Junior/Youth Swine will not be allowed. Clipping is allowed in the barns; however, no snaring will be allowed.
6. An estimated weight, as determined by the exhibitor, will be turned in via self-check-in. There will be no official weigh-in.
7. All commercial gilts must weigh a minimum of 220 pounds and a maximum of 350 pounds. Upon completion of each class showing, show management will weigh at least the top three (3) gilts, but may weigh more if there are disqualifications. Any gilt weighed by the officials weighing less than 220 pounds or more than 10 pounds above the official estimated weight, as determined by the exhibitor at the time of entry, will be eliminated from the show. The gilt will not move up to the next class. Should any of the top 3 gilts weigh out, the next place gilt will move up and be weighed. The same procedure will then be followed until three (3) qualified gilts are selected.
8. Commercial gilts will be split into light and dark crossbred divisions, but will be shown against each other for the Overall Grand Champion.
9. Any animal exhibited in the wrong class will be disqualified.
10. See [Youth Swine Showmanship Division Guide](#) for information on showmanship.



## CLASSES

- Broken by weight, after check-in.

## AWARD/PREMIUM INFORMATION

- Ribbons will be awarded to the top 10 in each class, except championship classes.

| AWARD                             | 1 <sup>st</sup>       | 2 <sup>nd</sup> | 3 <sup>rd</sup> | 4 <sup>th</sup> | 5 <sup>th</sup> | 6 <sup>th</sup> | 7 <sup>th</sup> | 8 <sup>th</sup> |
|-----------------------------------|-----------------------|-----------------|-----------------|-----------------|-----------------|-----------------|-----------------|-----------------|
| <b>*Individual Class Premiums</b> | \$60                  | \$50            | \$40            | \$30            | \$30            | \$30            | \$30            | \$30            |
| <b>Division Champions</b>         | Rosette               | Rosette         |                 |                 |                 |                 |                 |                 |
| <b>Overall Grand Champions</b>    | \$750, Banner & Award | \$500 & Banner  | \$300 & Banner  | \$200 & Banner  | \$100 & Banner  |                 |                 |                 |

**\*All classes with one/single entry (entered, shown, and judged) will be eligible for the class entry/per head fee (only) as premium whenever a premium is indicated.**





# JUNIOR MARKET BARROWS (DIVISION 1400-1409)

Superintendent: Bray Haven



**Entry Deadline:** August 25 (*Late fees apply after the deadline.*)

**May Start Arriving:** September 11 @ Noon

**Scales Open:** September 12 @ 10 a.m.

**Animals in Place/Cards Due:** September 13 @ 1 p.m.

**Judged in Barn 8 Arena:** September 14 @ 9 a.m.

**Released:** After completion of showing



*2023 Grand Champion Barrow  
owned by Gavin Straka*

**Refer to the Rules and Regulations sections for important information including animal health requirements, liability agreement, additional fees, admissions, deadlines, etc.**

## ADDITIONAL RULES

1. An exhibitor may enter multiple animals. However, exhibitors may only bring and show a maximum of three (3) market barrows.
2. All swine must have a premise ID and it must be listed on the health certificate.
3. Exhibitors must review the health requirements in order to arrive on the grounds and show.
4. All barrows shown in purebred classes must have healed ear notches in both ears. Barrows without healed ear notches will be shown as crossbreds, regardless of the breed.
5. The powdering, oiling, painting, and dressing, other than water, of Junior/Youth Swine will not be allowed. Clipping is allowed in the barns; however, no snaring will be allowed.
6. An estimated weight, as determined by the exhibitor, will be turned in via self-check-in. There will be no official weigh-in.
7. Show classification weight will range from 210 to 290 pounds. All barrows entered with estimated weight outside this range will not be allowed to show. If a barrow is weighed in the ring and it is determined that it is outside this range, premiums and awards will not be awarded and the animal will be disqualified.
8. During the showing of each class, show management will weigh the top three (3) barrows but may weigh more if there are disqualifications. Any barrow weighing less than 210 pounds will be disqualified. If a barrow in the top 3 has gained more than 10 pounds above the official estimated weight as determined by the exhibitor at the time of entry, he will be eliminated from the show. The barrow will not move up to the next class. Should any of the top three (3) barrows weigh out, the next place barrow will move up and be weighed. The same procedure will then be followed until three (3) qualified barrows are selected.
9. The following breeds will be offered in the Junior Market Barrow show:

|              |               |           |  |  |
|--------------|---------------|-----------|--|--|
| Berkshire    | Chester White | Duroc     | Hampshire  | Hereford   |
| Poland China | Spot          | Yorkshire | Light Crossbred (shown against dark cross for crossbred division champion) | Dark Crossbred (shown against light cross for crossbred division champion) |

10. Any animal exhibited in the wrong class will be disqualified.
11. See [Youth Swine Showmanship Division Guide](#) for information on showmanship.



## CLASSES

- Broken by weight within each breed by show management.

### Purebred Hampshire Barrow Show

At the 2024 EYO at the Oklahoma State Fair hog exhibitors will have the chance to exhibit in the purebred Hampshire barrow show. This is separate from the EYO at the Oklahoma State Fair market Hampshire barrow show. The show will take place on **Friday, September 13** following Youth Swine Showmanship. The winner of the purebred Hampshire barrow show will receive a cash premium. Any purebred Hampshire barrow shown can also be shown in the EYO market barrow show. Any purebred Hampshire barrow shown will count as one of the exhibitor's three market barrows, regardless of if they are being shown in the EYO market Hampshire barrow show. Pedigrees WILL NOT be required for the EYO market Hampshire barrow show but are required for the purebred Hampshire barrow show. The birth dates required for the purebred Hampshire barrow show are between January 1, 2024 and April 30, 2024.

To enter the Purebred Hampshire Barrow Show, exhibitors will enter the Hampshire barrow show and select the check box for Purebred Hampshire barrow. Premiums for this show will be determined based on association contributions.

### Purebred Yorkshire Barrow Show

At the 2024 EYO at the Oklahoma State Fair hog exhibitors will have the chance to exhibit in the purebred Yorkshire barrow show. This is separate from the EYO at the Oklahoma State Fair market Yorkshire barrow show. The show will take place on **Friday, September 13** following the Purebred Hampshire Barrow Show. The winner of the purebred Yorkshire barrow show will receive a cash premium. Any purebred Yorkshire barrow shown can also be shown in the EYO market barrow show. Any purebred Yorkshire barrow shown will count as one of the exhibitor's three market barrows, regardless of if they are being shown in the EYO market Hampshire barrow show. Pedigrees WILL NOT be required for the EYO market Yorkshire barrow show but are required for the purebred Yorkshire barrow show. The birth dates required for the purebred Yorkshire barrow show are between January 1, 2024 and April 30, 2024.

To enter the Purebred Yorkshire Barrow Show, exhibitors will enter the Yorkshire barrow show and select the check box for Purebred Yorkshire barrow. Premiums for this show will be determined based on association contributions.

## AWARD/PREMIUM INFORMATION

- Ribbons will be awarded to the top 10 in each class, except championship classes.
- Class premiums are based on the number entered and shown in each class, excluding championship classes.

| *CLASS PREMIUMS | 1 <sup>st</sup> | 2 <sup>nd</sup> | 3 <sup>rd</sup> | 4 <sup>th</sup> | 5 <sup>th</sup> | 6 <sup>th</sup> | 7 <sup>th</sup> | 8 <sup>th</sup> |
|-----------------|-----------------|-----------------|-----------------|-----------------|-----------------|-----------------|-----------------|-----------------|
| 2 – 5 head      | \$50            | \$40            |                 |                 |                 |                 |                 |                 |
| 6 – 7 head      | \$50            | \$40            | \$30            |                 |                 |                 |                 |                 |
| 8 – 9 head      | \$50            | \$40            | \$30            | \$30            |                 |                 |                 |                 |
| 10 – 14 head    | \$60            | \$50            | \$40            | \$30            | \$30            |                 |                 |                 |
| 15 or more head | \$60            | \$50            | \$40            | \$30            | \$30            | \$30            | \$30            | \$30            |

**\*All classes with one/single entry (entered, shown, and judged) will be eligible for the class entry/per head fee (only) as premium whenever a premium is indicated.**





| AWARD                           | 1 <sup>st</sup>         | 2 <sup>nd</sup>  | 3 <sup>rd</sup> | 4 <sup>th</sup> | 5 <sup>th</sup> |
|---------------------------------|-------------------------|------------------|-----------------|-----------------|-----------------|
| <b>Division Breed Champions</b> | \$200 & Rosette         | \$100 & Rosette  |                 |                 |                 |
| <b>Overall Grand Champions</b>  | \$2,000, Banner & Award | \$1,000 & Banner | \$500 & Banner  | \$250 & Banner  | \$200 & Banner  |

## SPECIAL AWARDS

- **James White Memorial Trophy**

*Traveling Trophy presented to the exhibitor of the Grand Champion Barrow.*

Dr. James D. White, a native of Lindsay, Oklahoma, devoted more than 30 years of his life to youth education, in both public schools and higher education. After five years as a high school agriculture education instructor in Davenport, he returned to Oklahoma State University (OSU) to attend graduate school. After completion of graduate school, he accepted a position as a faculty member in the agriculture education department at OSU. White received many honors through the years including: an Honorary American Farmer Degree, OVATA Gold-Teacher of Teachers Award and the Outstanding Academic Advisor in the OSU College of Agriculture. He was a great supporter of youth livestock activities and the Oklahoma State Fair for his entire career. This included many behind the scenes activities, for which he never received or expected recognition, and helping with the OSF Golden Pork Chop Contest, Junior Barrow Show and Junior Lamb Show. He recruited OSU College of Agriculture students for State Fair interns and student helpers at the livestock shows. He was also a FFA Meats Judging Contest superintendent at the Spring Oklahoma Youth Livestock Show for many years. White was recognized nationally for his enthusiasm, zeal, and dedication to teaching youth. His work ethics and honesty are beyond reproach, and an inspiration to us all.

- **Poland China Record Association Special Award**

The Poland China Record Association (PCRA), P.O. 9758, Peoria IL 61612-9758, will present a trophy to the Grand Champion Barrow exhibitor over all breeds, providing it is out of a recorded Poland China sire and dam. A picture of the winning animal, barrow certificate and certification by OSF must be sent to the PCRA within 30 days of the show. The PCRA will award \$15 worth of future recording credit to the exhibitor of the Champion Poland China Barrow for each 20 head, with a minimum of 20, of Poland Chinas exhibited upon receipt of the winner's registration number, number of Poland Chinas exhibited, and name and address of exhibitor from show officials.

- **Duroc, Hampshire and Yorkshire Special Awards**

The National Swine Registry (NSR), P.O. Box 2417, West Lafayette, Indiana, 47996, is a consolidation of the American Yorkshire Club, Hampshire Swine Registry, and the United Duroc Swine Registry. The NSR offers \$50 to the owner of the Grand Champion Barrow overall all breeds, provided the barrow is a registered Duroc, Hampshire or Yorkshire and from a recorded litter. The owner must provide proof of registration and a picture to receive their award.

- **American Berkshire Association Special Award**

The American Berkshire Association (ABA), P.O. Box 2436, West Lafayette, Indiana, 47996, offers a \$100 U.S. Savings Bond to the overall Grand Champion Market Barrow, if the animal is born from a recorded Berkshire litter, and the ABA is supplied a photo and story within 30 days of the show.