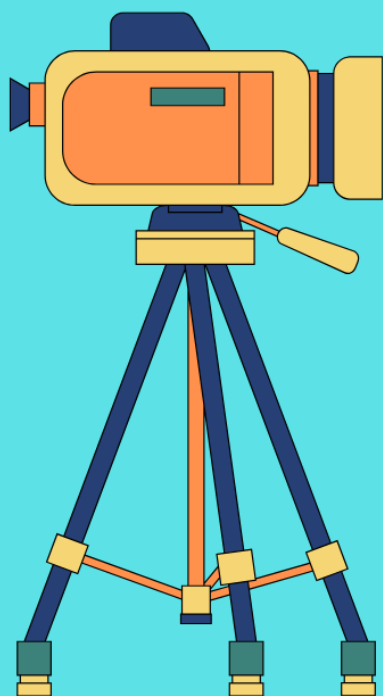




# PHOTO- GRAPHY



'25  
COMP  
GUIDE

**FREE REGISTRATION:**

July 1 - August 15

Find Your Contests Inside!

[okstatefair.com/competitions/creative-arts](https://okstatefair.com/competitions/creative-arts)

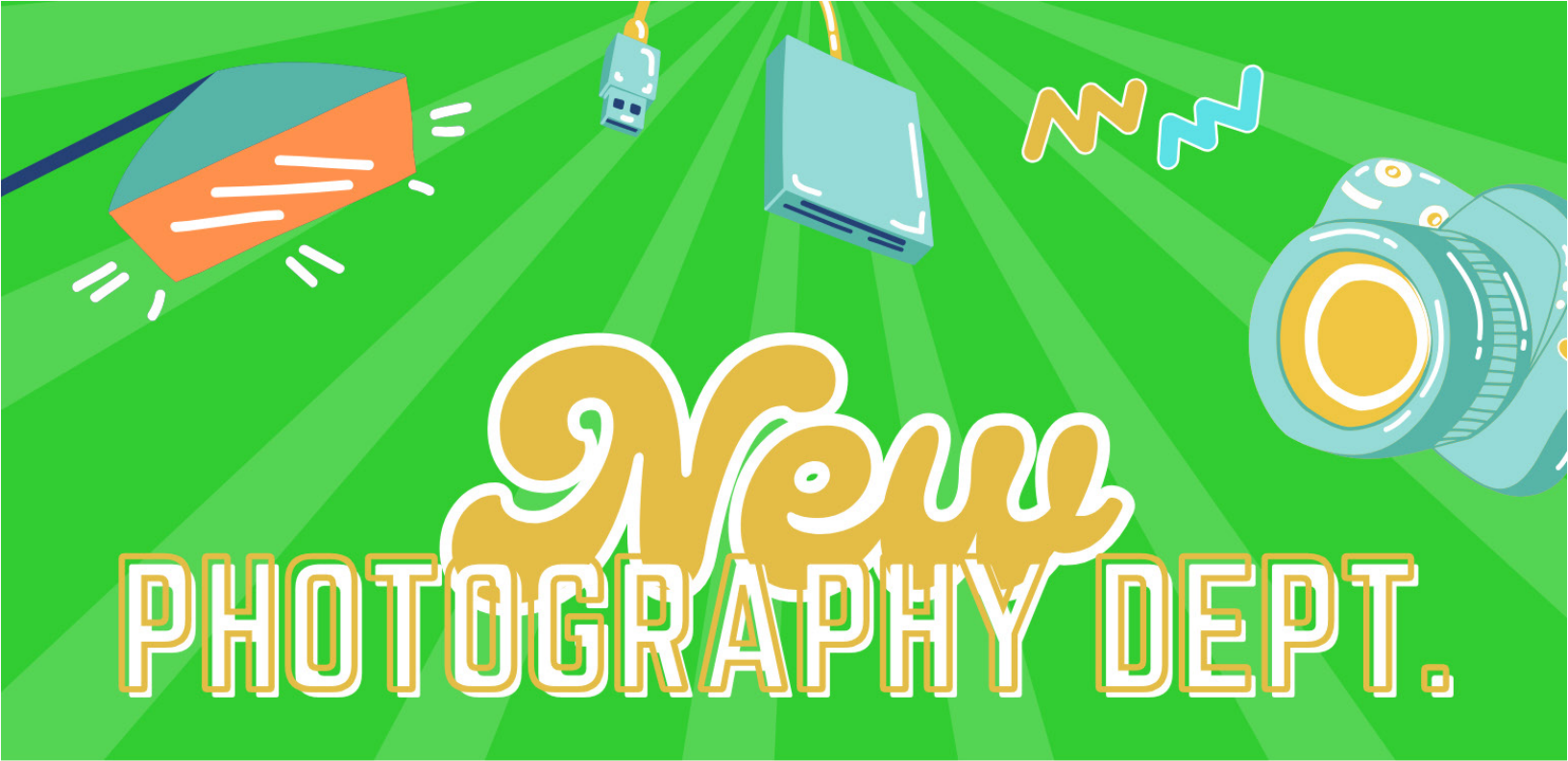


**OKLAHOMA  
STATE FAIR**

# **MISSION STATEMENT**

Oklahoma State Fair, Inc. is a 501(c)(3) not-for-profit corporation that serves the people of Oklahoma and is dedicated to continuing the organization's heritage of education, entertainment, and economic development through the operation of the OKC Fairgrounds and the annual Oklahoma State Fair.





# New PHOTOGRAPHY DEPT.

**TAKE IN WEEKEND - AUG. 23 - 24**

**NUMER OF PHOTOS THAT CAN BE ENTERED BY A PERSON TO 14**

**NEW ADULT CLASSES (BEES, SPORTS - FOOTBALL, ARIEL  
PHOTOS, COLOR OF THE YEAR - PURPLE)**

**NEW YOUTH CLASSES (ACTION, AT THE FAIR, COLOR OF THE  
YEAR - PURPLE)**

**GLOSSARY OF CLASSES**



# 2025 Creative Arts Program Photography Competition Guide

## Table of Contents

*Click on each contest to get more information!*

Oklahoma State Fair Mission Statement.....	Pg. 2
What's New .....	Pg. 3
Calendar of Events .....	Pg. 5
Social Media Info .....	Pg. 6
Creative Arts Drop-Off, Pick Up & Directions .....	Pg. 7
Entry Info & Department Regulations .....	Pg. 8
Preparing Your Photos For Display .....	Pg. 9

## PHOTOGRAPHY DIVISIONS:

<b>ONLINE:</b> Photos from the Fair .....	Pg. 10
Photography Show (3803).....	Pg. 11
<b>LIVE:</b> Digital Photography Shootout (3804).....	Pg. 12
<b>LIVE:</b> Digitally Edited Photo Contest (3805).....	Pg. 13
Photography Glossary Terms .....	Pg. 14

## STAFF CONTACTS

Carol Bertels  
Superintendent  
405-706-8878

Morgan Chappell  
Creative Programs Manager  
[CreativePrograms@okstatefair.com](mailto:CreativePrograms@okstatefair.com)  
405-948-6731

## 2025 Creative Arts Quick Reference Guide

**Creative Arts registrations must be submitted online.**

**Starting July 1, [CLICK HERE](#) to register.**

### Competition Guides

#### Posted Online:

Saturday, June 1

#### Registration:

Monday, July 1, 9 a.m. - Thursday, August 15

#### Deliver Exhibits:

Saturday, August 23 10 a.m. - 4 p.m.

Sunday, August 24, 11 a.m. - 4 p.m.

#### Pick Up Exhibits:

Monday, September 22, 2 - 7 p.m.

Tuesday, September 23, 9 a.m. - 2 p.m.

# Creative Arts Calendar of Events

Schedule for free registration: July 1 at 10 a.m. through August 15

**FREE REGISTRATION MUST BE DONE ONLINE.** If you do not have computer access, please go to your local library or contact your local OSU Cooperative Extension Services.


**Late registration:** We will no longer accept late registration, but we will have on-site registration during take-in.

**On-site registration:** August 24, from 10 a.m. to 4 p.m. and August 25, from 11 a.m. to 4 p.m. Exhibitors will be charged a \$12 fee per exhibitor (not per entry). **Credit or Debit cards will only be accepted.**



## CALENDAR

June 1	New competition guides posted online.
July 1	Online registration opens at 10 a.m.
August 15	Entry deadline for the Oklahoma State Fair Creative Arts competitions and contests. Free registrations must be received online by August 15.
August 16	<b>We will no longer accept late online registrations,</b> but you will be able to register on site during take-in with a small fee of \$12 per exhibitor. <u>All entries</u> will be turned in on the listed check-in days or on the day of the live contest.
August 23	Entry clerks will receive items at the Arts Annex from 10 a.m. to 4 p.m. Late registration will be available to enter with a \$12 late registration fee done electronically.
August 24	Entry clerks will receive items at the Arts Annex from 11 a.m. to 4 p.m. Late registration will be available to enter with a \$12 late registration fee done electronically.
August 25 - September 10	All Creative Arts entries judged (excludes live contest entries). This is closed judging. Exhibitors are not permitted to attend. We encourage you to come to the Fair to view results. Judging results will be posted online as soon as they are available, possibly after the end of the State Fair. <b>Do not call or email to ask for results. They cannot be given out prior to posting.</b>
September 11	Oklahoma State Fair opens! The Creative Arts Building & the Arts Annex will host a series of demonstrations, live contests, and special events every day of the Fair.
September 21	Last day of the Oklahoma State Fair.
September 22	Entry clerks will release exhibits upon presentation of claim check at the Creative Arts Building from 2 to 7 p.m.
September 23	Entry clerks will release exhibits upon presentation of claim check at the Creative Arts Building from 9 a.m. to 2 p.m. Items not picked up become property of the Oklahoma State Fair.





**SHOW US WHAT YOU'RE WORKING WITH**

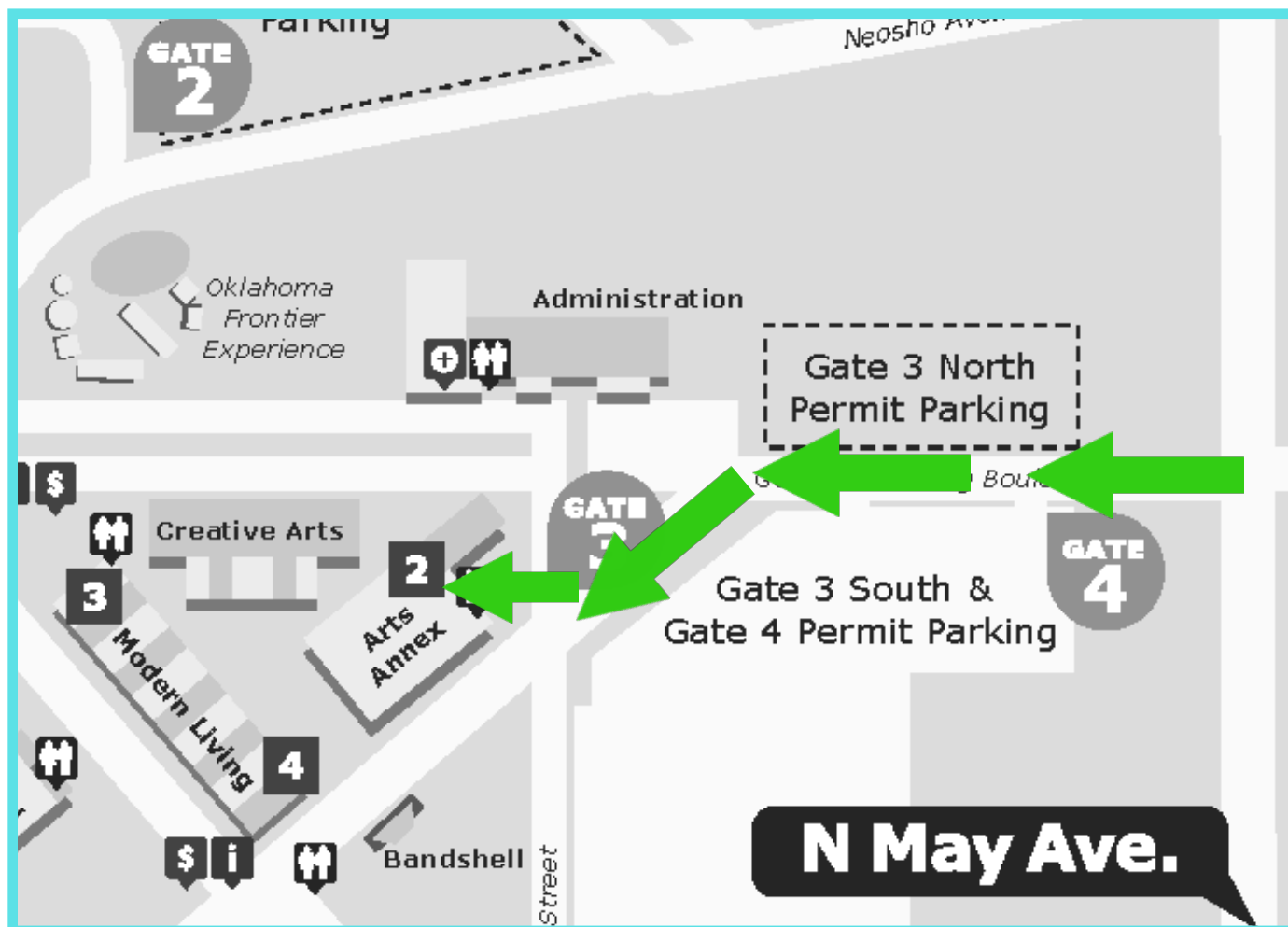


**We know sometimes it takes all year to create something magical to enter in the Fair, or just a few days! Share your progress with us! Tag the Fair when you share your creations and ribbons by using #okstatefair!**



**@okstatefair**

# Creative Arts Drop-Off & Pick Up Map & Information



## How To Get Here: Pre-Fair

Our physical address is 3000 General Pershing Blvd, OKC, OK 73107.

From I-44 take the NW 10th St. eastbound exit and follow until NW 10th St. and May Ave. (2nd light). Turn right onto May Ave. Proceed to Gate 3 (1st light) and drive towards the gate. You will then enter the OKC Fairgrounds and make your way to the Arts Annex.

## Drop-Off Information

Drop-off is Saturday, August 23 from 10 a.m. - 4 p.m. and Sunday, August 24 from 11 a.m. - 4 p.m. At check-in you will be given a claim check tag. PLEASE SAVE THESE as they are what you will need to pick up your item(s).

## Pick Up Information

Pick up is Monday, September 22 from 2 - 7 p.m. and Tuesday, September 23 from 9 a.m. - 2 p.m. Please remember to bring your claim check tag as this is how you reclaim your pieces. If you have misplaced your claim check tag, please bring a current photo ID of the exhibitor.

# CREATIVE ARTS RULES AND REGULATIONS

## ENTRY INFORMATION

**Who Can Enter?** ONLY OKLAHOMA RESIDENTS may enter our contests. Exhibitors entering must be amateurs unless an Open (expert) Division is offered.

**Who is considered an Amateur?** Someone who earns less than 10% of their income from this skill. If you have taught this craft before, or currently teach, you are not considered an Amateur, but may enter in an open class, if available.

**Are there any size limitations?** Furniture may be no larger than 40" in any direction. All other exhibits are limited to 30" in any direction.

**How many exhibits can be entered?** ONE ENTRY PER CLASS (unless otherwise stated.) There is no limit on the total number of entries. Photography is the exception with 12 total entries allowed per exhibitor. All entries must have been completed since the final day of the previous Oklahoma State Fair.

**Can I enter something I have entered in the pass?** Unless otherwise specified, items can only be entered once.

**What is the cost to enter?** CREATIVE ARTS ENTRIES ARE FREE if registered by August 15. (Only the wine contest requires an entry fee.)

**May I mail in my exhibit?** No.

**Do I need to pre-register for live contests?** Yes. All registration is online and you cannot register the day of on-site.

**How do I get into the Fair if I am entered in a live contest?** **ONLY EXHIBITORS** receive FREE ENTRY AND PARKING with live contests. Family and friends will need to purchase a ticket to get in the day of the contest. Please check out our pre-sale of tickets starting in July and ending the day before the start of the Fair.

**All entries must be the work of the exhibitor and completed since the previous Oklahoma State Fair except as noted.**

## CREATIVE ARTS DEPARTMENT REGULATIONS

- The Oklahoma State Fair reserves the right to reject any exhibit offered if it is objectionable in any way, if it requires an excessive amount of space, or if the capacity of the department has been reached. Any contest may be cancelled for lack of entries.
- Each item turned in is completed by one person, unless otherwise noted in the competition information.
- All work must be original. Art reproduced or rendered from works of masters, from advertisements, materials from published sources, or from widely circulated photographs is not original. AI art is not allowed, unless specified by the rules.
- Your items will be handled with care, however, Oklahoma State Fair, Inc. is not responsible for items that are damaged or lost while on display during the Fair. If the exhibitor feels it necessary, they must purchase their own insurance at their own expense. Exhibitors MAY NOT supply their own display stands. Only OSF stands will be used for display.
- Each exhibit will be evaluated by qualified individuals and the decision of the judge(s) is final. All cash prizes will be paid from the awards as marked by the judges and not from ribbons that may be attached to the exhibits. Judges are instructed not to award cash prizes unless the exhibit is deemed worthy of the placing awarded. Premium payouts for the Creative Arts Department will be mailed to exhibitors after the close of the Fair.
- Within 90 days from the last day of the 2025 Oklahoma State Fair, it is the responsibility of the Payee to file, in writing, a claim for lost or incorrect awards.
- If it is ascertained that an exhibitor has made any false statement with regards to any article or exhibit, or if any exhibitor attempts to harass or interfere with the judge or judges in the performance of their duties, the exhibitor shall be excluded from competition and forfeit all premiums.
- Any protest must be made in writing and accompanied by a deposit of \$50, which will be forfeited if protest is not sustained. Said protest must state plainly the cause of complaint or appeal and must be filed with the Creative Programs Manager by 5 p.m. on Thursday of the closing week of the Fair. Judges will be encouraged to view exhibits after items have been placed on display with names. If they believe that an exhibitor is not in the correct skill level, that judge will be encouraged to protest the placement.
- Every effort will be made to display entries in an attractive arrangement; however, items entered for competition will be displayed through 3rd place. Other entries will be displayed only as space is available and at the discretion of the superintendents.



# GENERAL PHOTOGRAPHY RULES

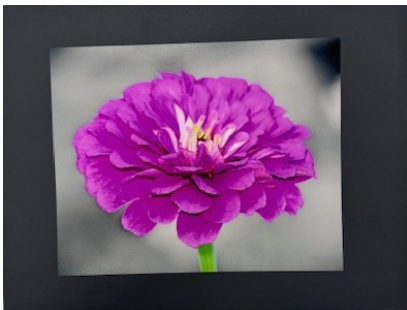
It is the photographer's responsibility and not the obligation of the Oklahoma State Fair to secure a release of any individual in a photograph.

All photographic entries must be created by the entrant. Photographs created in any part by the use of Artificial Intelligence (i.e., not by the use of a camera) will be automatically disqualified. Artificial intelligence is commonly abbreviated as "AI".

## PREP YOUR PHOTOS FOR DISPLAY

Photos are turned in physically during exhibit delivery and NOT DIGITALLY. All photos must be 8" x 10" or 8" x 12" in size and mounted on top of an 11" x 14" black backing, OR 8" x 8" and mounted on top of an 11" x 11" black backing. Photos may be mounted on top of a solid piece of cardstock, poster board, matte board or black foam core. Photos with a cut matte on top of the picture WILL NOT be accepted. Photos must not be titled or identified on the front but identifying information will be accepted on back of print. Photos will not be accepted if they do not follow these requirements.

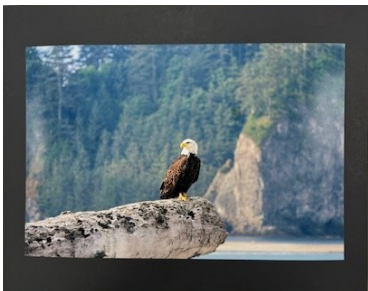
## PROPERLY MOUNTED PHOTOS



8" x 10" picture  
11" x 14" black backing



8" x 12" picture  
11" x 14" black backing



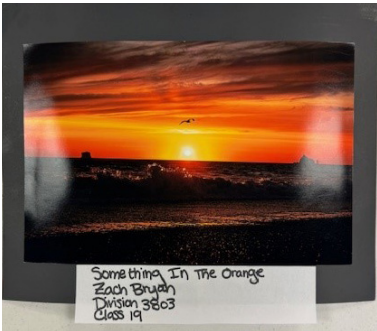
8" x 12" picture  
11" x 14" black backing



## INCORRECTLY MOUNTED PHOTOS



Do not turn in an image on a stretched canvas/wood canvas



No writing on the front



No Framed Photos

# ONLINE PHOTOGRAPHY CONTEST

## PHOTOS FROM THE FAIR

### JUNE 16 - JULY 3 ONLY!

If you ever have attended the Oklahoma State Fair, chances are you captured some memories with a camera. Send in your favorite Fair photos for your chance to win season passes for the 2025 Oklahoma State Fair – that's one admission for each day!

#### The Rules:

This contest is open to all ages. Amateurs only.  
All photos must be no greater than 10MB.  
The photos can be black & white, color, or sepia.  
One entry, per person, per category.

All applicants must enter their submissions on the State Fair entry page found at <https://okstatefair.wufoo.com/forms/zvu0x-ex1crf2ej/>

The following information will be asked for on the form:

Contestant First and Last Name:

Current Address:

Phone Number(s):

Email:

Category:

**Entries will be accepted from Monday, June 16, 2025 through Thursday, July 3, 2025.** Late entries will not be accepted. Winners will be announced on or before Friday, July 11, 2025.

By submitting your entry, you are giving the Oklahoma State Fair permission to reproduce your image in any display, merchandise, publication or printed material without compensation.

#### Categories

**Animals & Agriculture Aficionado:** From prize-winning livestock to antique tractors and farm machinery on display, give us your best shot.

**Carnival Ride Renegades:** Spinning, riding, or upside-down, submit your best photo from the carnival midway. This does not include Ferris Wheel Photos.

**Fair Favorites:** This is a "wild card" category of sorts. Show us what you love about the Oklahoma State Fair!

**Fair Food Fanatix:** From traditional to unique, we're looking for the best Fair food photos.

**Wheel Watchers:** The Oklahoma State Fair has three Ferris Wheels - show off your snapshot of one of them!

#### AWARDS

The top photo in each category will receive two (2) adult season passes and one (1) season parking valid for all days during the 2025 Oklahoma State Fair, September 11 - 21.

These five winning photos will be on display in the photography exhibit during the Fair and will receive first place rosettes. There will be a 'Best Of Show' voted for the top five photos.

# PHOTOGRAPHY SHOW

## Division 3803

**Due to class size limitations, exhibitors may only enter one photo per class, up to 14 entries total.**

Note: Young photographers may choose to enter in the adult class but may not enter both youth and adult.

### **Important:**

**Please check on previous pages how to submit your photography. As a reminder, photos will be turned in physically, NOT digitally.**

Only amateur photographers may enter. An amateur photographer derives no more than 10% of their income from photography.

All photos must be taken by the exhibitor. Taking a photo of another photo does not make it eligible for entry by an exhibitor. Black & white or color photos are accepted in all classes. Photos previously entered in the Oklahoma State Fair are not eligible for entry. Misclassified photos will be moved to the appropriate class. Photos will not be released early.

### **Adults**

01. Wildlife – mammals
02. Wildlife – birds
03. Wildlife – bees
04. Wildlife – insects other than bees
05. Wildlife – marine, lizards, etc.
06. Rural Oklahoma – structures
07. Rural Oklahoma – landscapes
08. Urban Oklahoma
09. Americana (Other 49 states) – urban
10. Americana (Other 49 states) – rural
11. International
12. Holiday (Christmas, Easter, Halloween, etc.)
13. Geometric & abstract patterns
14. Portraits – formal
15. Portraits – candid
16. Still life
17. Action
18. Sports – Football
19. Planes, Trains & Automobiles
20. Ariel photos (photos from drones, airplanes, etc.)
21. Digitally enhanced art
22. Twilight/Nighttime

23. Weather
24. At the Fair
25. Pets
26. Floral – Flowers
27. Floral – Plants, trees & floral landscapes
28. Selfies
29. Color of the Year – Purple
30. Class Not Listed

### **Youth (18 & under)**

31. Nature and wildlife
32. Landscapes
33. Pets
34. Weather
35. Geometric
36. Digitally enhanced art
37. Portraits & people
38. Action
39. Selfies
40. Sepia or black & white
41. At the Fair
42. Color of the Year – Purple
43. Class Not Listed

### **AWARDS**

Ribbons will be awarded through 10th place in each class. Honorable mention ribbons will be awarded for up to 50 adult entries and up to 15 youth entries. Best of Show will receive a certificate for one year membership to Photographic Society of America.

**BEST OF SHOW Adult..... Rosette, Medallion, PSA one-year Membership & \$125**

**PORTFOLIO AWARD Adult\*\* ..... Rosette & \$50**

**BEST OF SHOW Youth..... Rosette, Medallion, PSA one-year Membership & \$75**

**PORTFOLIO AWARD Youth\*\* ..... Rosette & \$50**

**SUPERINTENDENT'S CHOICE ..... Rosette & \$25**

\*\*Portfolio Award is presented to the exhibitor with the highest number of points in division 3803. Each 1st place win counts as 3 points, 2nd place counts as 2 points, 3rd place counts as 1 point.

# OKLAHOMA STATE FAIR SHUTTERBUGS: LIVE DIGITAL PHOTO SHOOTOUT

## Division 3804

### Sunday, September 14, 2025

1 p.m. - Check-in at a location: Arts Anex

3 p.m. - Upload Photos

5 - 5:30 p.m. - Judging

6 p.m. - Awards Announcement

Space is limited to the first 50 exhibitors who pre-register in each class.

After check-in and instructions are given, participants will be released into the OKC Fairgrounds to shoot-it-out with other digital photographers. Participants must return to the Arts Annex by 3 p.m. to download the image of their choice from their camera memory card.

PLEASE REMOVE ALL PHOTOS FROM THE SELECTED FILE IN YOUR MEMORY CARD BEFORE STARTING THE CONTEST.

Participants may submit only ONE photo for judging. Submitted photos from all participants must include the element provided to them at check-in.

Judging will take place from 5 - 5:30 p.m. All images will be compiled into a slide show. Participants and fairgoers will then vote for three of their favorites, with the top three vote recipients placing first through third.

NO DIGITAL ALTERATIONS or CROPPING! This includes any in-camera adjustment options.

NO TRIPODS ALLOWED. Tripods are a tripping hazard and will not be permitted. Monopods are allowed.

By participating in this contest, exhibitors are giving their permission to the Oklahoma State Fair to reproduce their image in any Fair publications, printed materials or merchandise without compensation.

Only amateur photographers may enter. An amateur derives no more than 10% of their income from photography.

### Classes:

01. Adults

02. 18 years or younger

Ribbons will be awarded through 10th place in each class.

### AWARDS

1st Place (in each class) ..... Rosette & \$50

2nd Place (in each class) ..... \$25

3rd Place (in each class) ..... \$15

# **DIGITALLY EDITED PHOTO CONTEST**

## **Division 3805**

Are you a photo editing genius? Do you have an eye for editing? Enter in the Oklahoma State Fair Digitally Edited Photo Contest!

Contestants will pre-enter the contest and then about a week before the Fair be emailed a photo to edit. Contestants will be given one week to edit the photo and then must email it back to the Oklahoma State Fair.

Image will be digitally enhanced or altered to create an entirely different, family-friendly, photo (no guns, bad words or suggestive imagery can be added). Removed images, inserted images and cloned images and the like may be used. Combined images must be images produced by the photographer. The finished entry must still appear to be a photograph. Images can be manipulated in any method, either through photo editing software or other techniques.

Photos will be on display for one week and be voted on by the public. During the second weekend, ribbons will be attached to the photos.

Only amateur editors may enter. An amateur derives no more than 10% of their income from photo editing.

Photos must be able to be printed by the Oklahoma State Fair for display. Photo must be in the size of 8" x 11".

### **AWARDS**

<b>1st Place .....</b>	<b>Rosette &amp; \$50</b>
<b>2nd Place .....</b>	<b>\$25</b>
<b>3rd Place .....</b>	<b>\$15</b>
<b>People's Choice .....</b>	<b>\$50</b>

# PHOTOGRAPHY GLOSSARY

**Below is a glossary of what each class of competition of the Photography Department requires. If you have questions, please refer to the definitions.**

**Wildlife - Mammals** - A warm-blooded vertebrates with hair. Some examples are dogs, lions, monkeys, etc.

**Wildlife - Birds** - Characterized by feathers, toothless beaked jaws, lay hard-shelled eggs, have wings. Some examples are hummingbirds, owls, Flamingos, Penguins, Eagles, Hawks, etc.

**Wildlife - Bees** - A small buzzing animal that could potentially pollinate flowers, food, etc.

**Wildlife - Insects, other than bees** - A small animal with six legs, a body divided into three parts and usually two pairs of wings, or more generally any similar very small animals. Some examples are Ladybugs, beetles, crickets, etc.

**Wildlife - Marine, Lizards, etc.** - Ocean animals, reptiles, etc. Some examples are dolphins, snakes, etc.

**Rural Oklahoma - Structures** - A structure found in the rural area of Oklahoma. Some examples are barns, silos, abandoned buildings, homes in rural areas, etc.

**Rural Oklahoma - Landscapes** - Landscapes found in the rural parts of Oklahoma. Some examples are cropland, forests, grasslands, pastures, rivers, etc.

**Urban Oklahoma** - A town or a city in Oklahoma. Examples of cities in Oklahoma are OKC, Edmond, Duncan, Stillwater, Norman, etc.

**Americana (Other 49 States) - Urban** - A town or a city in America. Some cities are New York City, Dallas, Miami, Denver, Kansas City, etc.

**Americana (Other 49 States) - Rural** - Countryside rather than a town located in America. Some examples are farmland, lakes, bodies of water, mountain ranges, etc.

**International** - Location not inside of the U.S. Some examples are photos with landmarks not from the U.S. Could include famous structures, culturally appropriate buildings, waterways not from here, etc.

**Holiday (Christmas, Halloween, etc.)** - Something celebrating a holiday. Some examples are Mardi Gras, Christmas, Easter, Halloween, 4th of July, etc.



**Geometrics & Abstract Patterns** - Geometric is considered a series of shapes in patterns. Abstract is considered something that does not attempt to represent an accurate depiction of a visual reality, but instead uses shapes, colors, forms and gestural marks. Some examples of Geometric is considered patterns, patterned repetitive art with hard shapes and Abstract art is swirls, non straight lines, etc.

**Portraits - Formal** - An image of a person that clearly displays their likeness and may not often display an aspect of their personality. Not a snapshot, but carefully arranged posed. Some examples are Senior photos, staged family photos, Presidential photos, etc.

**Portraits - Casual** - Considered a lifestyle portrait. Captures the subject in everyday situation and environment. Most always taken out of a studio and on location. Some examples are kids playing, outside, family picture, relaxed, etc.

**Still Life** - Art that shows inanimate objects from the natural or man-made world. Still life depict things that are “still” and not don’t move. Some examples are baskets/bowls, fruit, dead game, etc.

**Action** - This is capturing an object in action and displaying it in a single image. Some examples are falling, kid playing sport, movement of material, etc.

**Sports - Football** - Photos of people playing football. Action shots. This could be a photo of intro flag football to pro football, if you took it!

**Planes, Trains & Automobiles** - Something that is a plane, train or automobile. Some examples are train on track, a car parked or in motion, a plane flying in the air, etc.

**Ariel Photos** - Photos taken from the sky. This could be from an airplane, a drone other other ariel form.

**Digitally Enhanced Art** - Images that have been specifically altered for the purpose of making the subject of the photo and the photo itself look better than the camera and lighting by itself was able to capture. Some examples are Red umbrella brought out, color changed, movement of item added, etc.

**Twilight/Nighttime** - A time when the sun sets below the horizon but sunlight is scattering into the upper atmosphere and lighting the lower atmosphere, or when the photo is taken at night. Some examples are golden hour photos, neon at night, etc.

**Weather** - Photographing during storms and lightning. Some examples are rain clouds, snow, snowed in items, tornados, rainbows, etc.

**At The Fair** - Activities or people at the Oklahoma State Fair, and only the Oklahoma State Fair. Some examples are people riding the Ferris Wheels, Creative Arts Exhibits, animals competing, people at the Fair!

**Pets** - A human’s pet. Some examples are dogs, cats, fish, lizards, etc. Can be taken with a human, but not big/illegal animals.

**Pets** - A human's pet. Some examples are dogs, cats, fish, lizards, etc. Can be taken with a human, but not big/illegal animals.

**Floral - Flowers** - Photos of flowers. Can be one or more flowers or close ups. Some examples are roses, flower garden, bushes, etc.

**Floral - Plants, trees & floral landscapes** - Plants & trees & large fields of flowers. Some examples are leafy ferns, inside plants, big trees, Blue Bonnet Fields, etc.

**Selfies** - A self-portrait, taken by you! Photo of the person submitted. Can have more than one person in it, can be close up or far away.

**Color of the Year - Purple** - A photo where the color purple is highlighted. The whole photo does not need to be purple, but it must be the main color of the photo.

**Class not listed** - Anything not listed from above. Please take time to find where your item will fit.