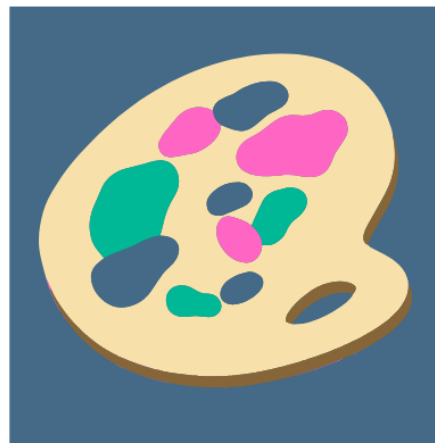




THE
Midway
OF THE
MOTHER ROAD

FINE ARTS, CRAFTS & HOBBIES



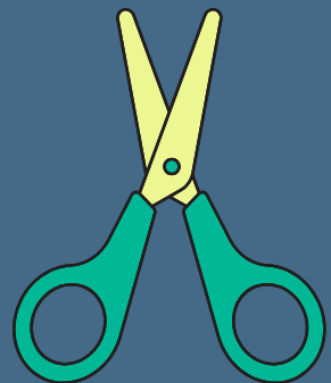
'26
**COMP
GUIDE**

FREE REGISTRATION:

July 1 - August 15

Find Your Contests Inside!

okstatefair.com/competitions/creative-arts



**OKLAHOMA
STATE FAIR**

MISSION STATEMENT

Oklahoma State Fair, Inc. is a 501(c)(3) not-for-profit corporation that serves the people of Oklahoma and is dedicated to continuing the organization's heritage of education, entertainment, and economic development through the operation of OKC Fair Park and the annual Oklahoma State Fair.





New

FINE ARTS, CRAFTS & HOBBIES DEPT.

TAKE IN WEEKEND - AUG. 29 -30

MULTIPLE NEW CLASSES!

NEW JEWELRY & BEADWORK (PG. 17)

TRIM - A-TREE DECORATING CONTEST - ROAD TRIP (PG. 22)

TABLE DECORATING CONTEST - ROUTE 66 STOP (PG. 24)

CHRISTMAS CREATIONS: ROUTE 66 ROAD TRIP ORNAMENT (PG. 26)

RECLAIM: A DAY LATER - TUES., SEPT. 29 - WED., SEPT. 30



2026 Creative Arts Program

Fine Arts, Crafts & Hobbies Competition Guide

Table of Contents

Click on each contest to get more information!

Oklahoma State Fair Mission Statement.....	Pg. 2
What's New	Pg. 3
Calendar of Events	Pg. 5
Social Media Info	Pg. 6
Creative Arts Drop-Off, Pick Up & Directions	Pg. 7
Entry Info & Department Regulations	Pg. 8
Preparing Your Artwork For Display.....	Pg. 9

FINE ARTS, CRAFTS & HOBBIES DIVISIONS:

Fine Arts (3500).....	Pg. 10
Decorative Painting (3501-3503).....	Pg. 10
Hand Painted Furniture (3504).....	Pg. 11
Collections (3505).....	Pg. 11
Misc. Crafts (3506).....	Pg. 12
Miniatures (3507).....	Pg. 12
Trash 2 Treasure: Recycled Crafts (3508)	Pg. 13
Egg Art (3509)	Pg. 13
Woodcarving (3510-3511)	Pg. 14
Woodworking/Woodburning (3512-3513).....	Pg. 14
Let's Celebrate! (3514).....	Pg. 15
Paper Crafts (3515).....	Pg. 16
Leathercrafting (3517)	Pg. 16
Woodturning (3518).....	Pg. 17
Jewelry & Beadwork (3519).....	Pg. 17
Polymer Clay Creations (3520)	Pg. 18
Basketweaving (3521).....	Pg. 19
Developmentally Disabled Crafts (3522).....	Pg. 20
Major Neurocognitive Crafts (3523).....	Pg. 21

LIVE CONTESTS

LIVE: Trim-A-Tree Contest (3524).....	Pg. 22
LIVE: Fancy Feet Contest (3525).....	Pg. 23
LIVE: Voice of the Fair -	Pg. 23
Poetry Contest (3526)	
LIVE: Table Decorating Contest (3527).....	Pg. 24
LIVE: Best Dressed Pumpkin Contest (3528) ...	Pg. 25
LIVE: Breast Cancer Awareness:	Pg. 25
Beautiful Bras! (3529)	
LIVE: Christmas Creation:.....	Pg. 26
Live Ornament Making (3530)	
LIVE: Oklahoma Mural Challenge (3532).....	Pg. 27

STAFF CONTACTS

Brenda Edge
Superintendent
405-250-4282

Morgan Chappell
Creative Programs Manager
CreativePrograms@okstatefair.com
405-948-6731

2026 Creative Arts Quick Reference Guide

Creative Arts registrations must be submitted online.

Starting July 1, [CLICK HERE](#) to register.

Competition Guides

Posted Online:

Monday, June 1

Registration:

Wednesday, July 1, 9 a.m. - Saturday, August 15

Deliver Exhibits:

Saturday, August 29, 10 a.m. - 4 p.m.

Sunday, August 30, 11 a.m. - 4 p.m.

Pick Up Exhibits:

Tuesday, September 29, 10 a.m. - 7 p.m.

Wednesday, September 30, 9 a.m. - 2 p.m.

Creative Arts Calendar of Events

Schedule for free registration: July 1 at 10 a.m. through August 15

FREE REGISTRATION MUST BE DONE ONLINE. If you do not have computer access, please go to your local library or contact your local OSU Cooperative Extension Services.

Late registration: We no longer accept late registration, but we will have on-site registration during take-in.

On-site registration: August 29, from 10 a.m. to 4 p.m. and August 30, from 11 a.m. to 4 p.m. Exhibitors will be charged a \$12 fee per exhibitor (not per entry). **Credit or Debit cards will only be accepted.**



CALENDAR

- | | |
|-------------------------------------|---|
| June 1 | New competition guides posted online. |
| July 1 | Online registration opens at 10 a.m. |
| August 15 | Entry deadline for the Oklahoma State Fair Creative Arts competitions and contests. Free registrations must be received online by August 15. |
| August 16 | We will no longer accept late online registrations, but you will be able to register on site during take-in with a small fee of \$12 per exhibitor. <u>All entries</u> will be turned in on the listed check-in days or on the day of the live contest. |
| August 29 | Entry clerks will receive items at the Oklahoma Arts Building from 10 a.m. to 4 p.m. Late registration will be available to enter with a \$12 late registration fee done electronically. |
| August 30 | Entry clerks will receive items at the Oklahoma Arts Building from 11 a.m. to 4 p.m. Late registration will be available to enter with a \$12 late registration fee done electronically. |
| August 31 -
September 16 | All Creative Arts entries judged (excludes live contest entries). This is closed judging. Exhibitors are not permitted to attend. We encourage you to come to the Fair to view results. Judging results will be posted online as soon as they are available, possibly after the end of the State Fair. Do not call or email to ask for results. They cannot be given out prior to posting. |
| September 17 | Oklahoma State Fair opens! The Oklahoma Arts Building will host a series of demonstrations, live contests, and special events every day of the Fair. |
| September 27 | Last day of the Oklahoma State Fair. |
| September 29 | Entry clerks will release exhibits upon presentation of claim check at the Creative Arts Building from 10 a.m. to 7 p.m. |
| September 30 | Entry clerks will release exhibits upon presentation of claim check at the Creative Arts Building from 9 a.m. to 2 p.m. Items not picked up become property of the Oklahoma State Fair. |

SHOW US WHAT YOU'RE WORKING WITH

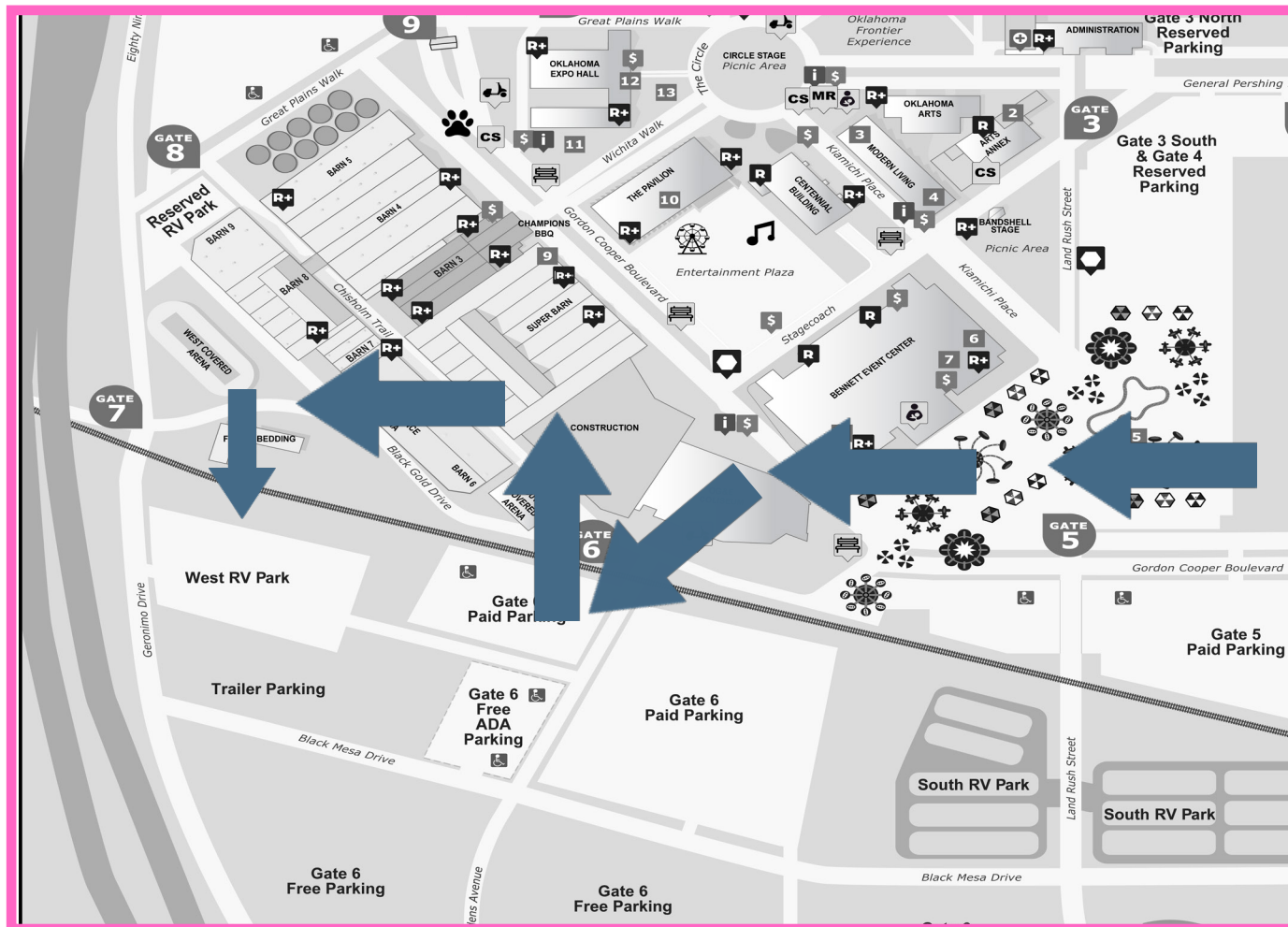


We know sometimes it takes all year to create something magical to enter in the Fair, or just a few days! Share your progress with us! Tag the Fair when you share your creations and ribbons by using #okstatefair!



@okstatefair

Creative Arts Drop-Off & Pick Up Map & Information



How To Get Here: Pre-Fair

Our physical address is 3100 General Pershing Blvd., Oklahoma City, OK 73107.

From I-44 take the NW 10th St. eastbound exit and follow until NW 10th St. and May Ave. (2nd light). Turn south onto May Ave. Proceed to Gate 3 (1st light) and drive towards the gate. You will then enter OKC Fair Park and make your way to the Oklahoma Arts Building.

Drop-Off Information

Drop-off is Saturday, August 29 from 10 a.m. - 4 p.m. and Sunday, August 30 from 11 a.m. - 4 p.m. At check-in you will be given a claim check tag. PLEASE SAVE THESE as they are what you will need to pick up your item(s).

Pick Up Information

Pick up is Tuesday, September 29 from 10 - 7 p.m. and Wednesday, September 30 from 9 a.m. - 2 p.m. Please remember to bring your claim check tag as this is how you reclaim your pieces. If you have misplaced your claim check tag, please bring a current photo ID of the exhibitor.

CREATIVE ARTS RULES AND REGULATIONS

ENTRY INFORMATION

Who can enter? ONLY OKLAHOMA RESIDENTS may enter our contests. Exhibitors entering must be amateurs unless an Open/Master (expert) Division is offered.

Who is considered an amateur? Someone who earns less than 10% of their income from this skill. If you have taught this craft before, or currently teach, you are not considered an amateur, but may enter in an open class, if available.

Are there any size limitations? Furniture may be no larger than 40" in any direction. All other exhibits are limited to 30" in any direction.

How many exhibits can be entered? ONE ENTRY PER CLASS (unless otherwise stated.) There is no limit on the total number of entries per exhibitor overall. Photography is the exception with 14 total entries allowed per exhibitor. All entries must have been completed since the final day of the previous Oklahoma State Fair.

Can I enter something I have entered in the past? No. Unless otherwise specified, items can only be entered once.

What is the cost to enter? CREATIVE ARTS ENTRIES ARE FREE if registered by August 15. (Only the wine contest requires an entry fee.)

May I mail in my exhibit? No.

Do I need to pre-register for live contests? Yes. All registration is online and you cannot register the day of on-site.

How do I get into the Fair if I am entered in a live contest? **ONLY EXHIBITORS** receive **FREE ENTRY AND PARKING** with live contests. Family and friends will need to purchase a ticket to get in the day of the contest. Please check out our pre-sale of tickets starting in July and ending the day before the start of the Fair.

All entries must be the work of the exhibitor and completed since the previous Oklahoma State Fair except as noted.

CREATIVE ARTS DEPARTMENT REGULATIONS

- The Oklahoma State Fair reserves the right to disqualify or reject any exhibit in its sole discretion, does not follow general Fair guidelines, requires an excessive amount of space, or if the capacity of the department has been reached. Any contest may be cancelled for lack of entries.
- Each item turned in is completed by one person, unless otherwise noted in the competition information.
- All work must be original. Art reproduced or rendered from works of masters, from advertisements, materials from published sources, or from widely circulated photographs is not original. Artificial Intelligent (AI) art is not allowed, unless specified by the rules.
- Your items will be handled with care, however, Oklahoma State Fair, Inc. is not responsible for items that are damaged or lost while on display during the Fair. If the exhibitor feels it necessary, they must purchase their own insurance at their own expense. Exhibitors MAY NOT supply their own display stands. Only OSF stands will be used for display.
- Each exhibit will be evaluated by qualified individuals and the decision of the judge(s) is final. All cash prizes will be paid from the awards as marked by the judges and not from ribbons that may be attached to the exhibits. Judges are instructed not to award cash prizes unless the exhibit is deemed worthy of the placing awarded. Premium payouts for the Creative Arts Department will be mailed to exhibitors after the close of the Fair.
- Within 90 days from the last day of the 2026 Oklahoma State Fair, it is the responsibility of the Payee to file, in writing, a claim for lost or incorrect awards.
- If it is ascertained that an exhibitor has made any false statement with regards to any article or exhibit, or if any exhibitor attempts to harass or interfere with the judge or judges in the performance of their duties, the exhibitor shall be excluded from competition and forfeit all premiums.
- Any protest must be made in writing and accompanied by a deposit of \$50, which will be forfeited if protest is not sustained. Said protest must state plainly the cause of complaint or appeal and must be filed with the Creative Programs Manager by 5 p.m. on Thursday of the closing week of the Fair. Judges will be encouraged to view exhibits after items have been placed on display with names. If they believe that an exhibitor is not in the correct skill level, that judge will be encouraged to protest the placement.
- Every effort will be made to display entries in an attractive arrangement; however, items entered for competition will be displayed through 3rd place. Other entries will be displayed only as space is available and at the discretion of the superintendents.

GENERAL FINE ARTS, CRAFTS & HOBBIES RULES

No piece can exceed 30" in any direction, unless stated on specific competition rules, including framing.

Items cannot weigh more than 30 lbs.

Items must be created since the previous Fair. If it is proven that items were created before then, the piece will be disqualified.

No weapons, weapon casing, depiction of violence or items alluding to violence/weapons allowed.

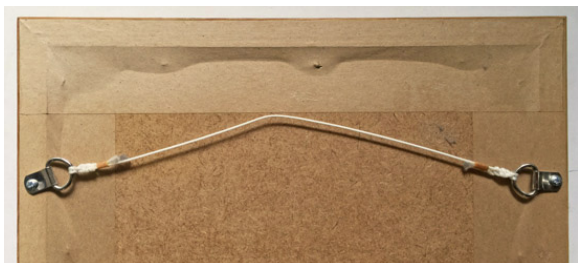
All pieces should be dry and ready to be displayed. (i.e., no drying glue, wet paint or resin, etc.)

PREP YOUR ARTWORK FOR DISPLAY

To insure artwork is handled/hung correctly, follow these following steps.

All pieces should be mounted so they can be hung. This includes pieces drawn on paper, flat-backed canvases and pieces just in matting. If your artwork is flat or a piece of paper, attach it to a black piece of posterboard with no more than a 2" border around the artwork.

Acceptable ways to hang items are to include d-rings with wire to hang, a sawtooth hanger, or a soda pop tab hot/super glued to the back of your piece. Framed pieces will also be accepted.



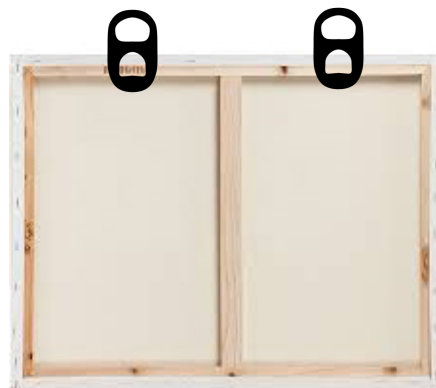
D-ring with wire



Sawtooth hanger



Drawing on white paper matted & soda pop tab for hanging. Please glue tabs.



Soda pop tab holder.
Please glue tabs.

For three-dimensional pieces, if there is a proper way to display, please include a note taped to the bottom so we can display your item correctly.

FINE ARTS

Division 3500

Reproductions from art books, magazines, etc. will be disqualified. If a painting is done from a pattern, it must be entered in Class 08. Pictures must be ready to hang or they will not be displayed.

Exhibitors may enter ONLY ONE exhibit per class.

Exhibits are limited to 24" x 30" including frame.

- | | | |
|-------------------------|-----------------------------------|---|
| 01. Acrylic/Oil Paints | 05. Pencil | 09. Graphic design/Illustration (no AI) |
| 02. Watercolor | 06. Pastels | 10. Sculpture |
| 03. Painting Not Listed | 07. Mixed Media - 2D | 11. Mixed Media - 3D |
| 04. Pen & Ink | 08. Printmaking (not photography) | 12. Class Not Listed |

AWARDS

Ribbons will be awarded through 10th place in each class.

BEST OF SHOW..... Rosette, Medallion & \$50

PORTFOLIO AWARD* Rosette & \$25

SUPERINTENDENT'S CHOICE AWARD..... Rosette & \$25

*Based on number of exhibits and awards

DECORATIVE PAINTING

Division 3501-3503

Decorative painting is a diverse art form utilizing a variety of techniques and media to decorate functional surfaces including: stenciling, faux finishing, bronzing, gold leafing, country painting, theorem and graining.

Paintings on fabric/canvas will only be accepted in Fine Arts Division 3500. Exhibits are limited to 24" x 30" including frame. Two dimensional decorative painting must be ready to hang or will not be displayed.

Division 3501, Novice

For painters who have been painting less than 2 years.

01. People
02. Seasonal
03. Nature
04. Class Not Listed

Division 3502, Amateur

For painters who have been painting 2-4 years.

01. People
02. Seasonal
03. Nature
04. Class Not Listed

Division 3503, Open Class

For painters with all levels of experience.

01. Tole
02. Flowers
03. People
04. Animals, birds, fish
05. Landscapes/scenes
06. Seasonal
07. Class Not Listed

AWARDS

Ribbons will be awarded through 10th place in each class.

BEST OF SHOW, Novice Rosette & \$25

BEST OF SHOW, Amateur Rosette & \$25

BEST OF SHOW, Open..... Rosette & \$25

HAND PAINTED FURNITURE

Division 3504

Furniture not to exceed 40" in any direction.
Exhibitors may enter 2 exhibits - must be noted on entry form/online entry.

01. All hand painted furniture

AWARDS

Ribbons will be awarded through 10th place in each class.

- 1st Place** Rosette & \$50
- 2nd Place** Ribbon & \$25
- 3rd Place** Ribbon & \$15

COLLECTIONS

Division 3505

Each collection must contain at least 5 pieces and a display no larger than 16" x 20".
Collections must be attached to the display board or box to be considered one entry.
Pin and button collections must be enclosed in a frame or attached on a display board.

Please note: No loose collections or sets will be accepted. If it "wiggles and wobbles," it will not be accepted.

- 01. Stamps, spoons, thimbles
- 02. Glass items
- 03. Metal items
- 04. Paper items
- 05. Buttons (political campaigns, etc.)
- 06. Pins (trading pins, company pins, etc.)
- 07. Patches, badges (embroidered or sewn)
- 08. Class Not Listed

AWARDS

Ribbons will be awarded through 10th place in each class.

- BEST OF SHOW**..... Rosette & \$25

MISCELLANEOUS CRAFTS

Division 3506

All exhibits that require hanging for display should be brought with hanger, wire or other hanging device attached and ready to hang. List a brief description on the entry form/online entry.

Exhibits are limited to 24" x 30" including frame.

- | | |
|--|--|
| 01. Candle, original by exhibitor | 12. Nature Craft - made from natural source vines, cones, etc. |
| 02. Stained glass | 13. 3D Art |
| 03. Fabric craft, functional | 14. Best original design using clay pots |
| 04. Fabric craft, decorative | 15. Diamond Art |
| 05. Plastic canvas quick point | 16. Perler Beads |
| 06. Mobiles | 17. Lidded boxes |
| 07. Etched glass (not exceeding 30") | 18. Any craft using Oklahoma State Fair theme |
| 08. Silk flower arrangement | 19. Clothing and accessories |
| 09. Best original design using gourds | 20. Miscellaneous |
| 10. Best original design using seashells | |
| 11. Best original design using wood or metal | |

AWARDS

Ribbons will be awarded through 10th place in each class.

BEST OF SHOW..... Rosette & \$30

2nd Place Overall..... Mini-Rosette & \$15

3rd Place Overall Mini-Rosette & \$10

MINIATURES

Division 3507

Doll houses should have full glass or Plexiglas cover, with all items securely anchored.

Designated piece(s) from doll houses must be labeled for individual judging.

Entry is not open to professionals who make miniatures.

Indicate scale on entry form/online registration.

Maximum dimensions - 40 lbs, 28" width, 30" length (Exhibitors must be able to handle exhibits without assistance.)

- | | |
|-------------------|-----------------------------|
| 01. Doll house | 04. Furniture & accessories |
| 02. Room settings | 05. Doll house dolls |
| 03. Vignettes | 06. Class Not Listed |

AWARDS

Ribbons will be awarded through 10th place in each class.

BEST OF SHOW.....Rosette & \$30

2nd Place Overall..... Mini-Rosette & \$15

3rd Place Overall Mini-Rosette & \$10

TRASH 2 TREASURE: RECYCLED CRAFTS

Division 3508

Entries must incorporate recycled items or use existing items in a new way.
 Entries must be at least 50% recycled (unless otherwise stated).
 Items may not exceed 30 lbs in weight or 30" in any direction.

Judging Criteria:

- Percentage of recycled material used - 30%
- Creative use of materials - 40%
- Practicality/Durability: submissions are practical and durable - 10%
- Coolness Factor/Aesthetics: submissions are unique, interesting, and/or visually pleasing/stimulating - 20%

- | | |
|---|------------------------------|
| 01. Clothing | 05. Interior decorative item |
| 02. Jewelry/accessory | 06. Exterior decorative item |
| 03. Hats/purses | 07. 100% recycled item |
| 04. Usable item - any item that may be used in daily life | 08. Class Not Listed |

AWARDS

Ribbons will be awarded through 10th place in each class.

- BEST OF SHOW**Rosette & \$25
2nd Place Overall..... Mini-Rosette & \$15
3rd Place Overall Mini-Rosette & \$10

EGG ART

Division 3509

Real eggs only.

- | | |
|---|--|
| 01. Decoupage on egg | 05. Hand-painted egg (any style of egg, at least one half of the egg must be painted, inside or outside) |
| 02. Miniature egg (any style of egg but egg must be smaller than a chicken egg) | 06. Seasonally decorated egg |
| 03. Hinged egg | 07. Gold leaf egg |
| 04. Diorama (one or more openings, no hinges, miniature scene with figures in a natural setting within egg) | 08. Class Not Listed |

AWARDS

Ribbons will be awarded through 5th place in each class.

- BEST OF SHOW**Mini-Rosette & \$25
2nd Place Overall..... Mini-Rosette & \$10
3rd Place Overall Mini-Rosette & \$5

WOODCARVING

Division 3510-3511

No more than TWO (2) entries per class will be accepted from each exhibitor. Indicate both exhibits on the online entry. Items cannot exceed 30 lbs in weight or 24" x 30" in size. Sculpture or carving in the round.

Division 3510, Amateur - Less than 2-4 years of experience.

01. All Novice Entries

Division 3511, Open - Over 4 years of experience (including teachers and professionals).

- 01. Animals, birds, or fish
- 02. People
- 03. Caricatures
- 04. Plaques/Pictures
- 05. Class Not Listed

AWARDS

Ribbons will be awarded through 10th place in each class.

1st Place, Amateur Class Rosette & \$15

BEST OF SHOW, Open Class Rosette & \$25

Superintendent's Choice in Woodcarving Rosette & Medallion

WOODWORKING

Division 3512

No more than TWO (2) entries per class will be accepted from each exhibitor. Indicate both exhibits on the online entry.

- 01. Woodworking - small furniture. Cannot exceed 30" in any direction.
- 02. Woodworking - toys
- 03. Woodworking - scroll saw
- 04. Woodworking - intarsia (puzzle-like)
- 05. Woodworking - Class Not Listed. Cannot exceed 30" in any direction.

AWARDS

Ribbons will be awarded through 10th place in each class.

BEST OF SHOW Rosette & \$25

Superintendent's Choice in Woodworking Rosette & Medallion

WOODBURNING

Division 3513

No more than TWO (2) entries will be accepted from each exhibitor. Indicate both exhibits on the online entry.

- 01. Woodburning - all classes

AWARDS

Ribbons will be awarded through 10th place in each class.

1st Place Rosette & \$15

LET'S CELEBRATE!

Division 3514

No Ceramics.

Wreaths cannot be larger than 24". Other items may not exceed 24" x 30" when folded.

No perishable items.

CHRISTMAS

01. Wreath
02. Fabric craft
03. Tree decoration
04. Centerpiece/door decoration
05. Character (Santa, snowman, etc.)
06. Angel/Nativity Scene
07. Christmas Item Not Listed

THANKSGIVING

08. Door decoration
09. Centerpiece
10. Thanksgiving Item Not Listed

EASTER

11. Centerpiece/door decoration
12. Fabric craft
13. Basket
14. Easter Item Not Listed

HALLOWEEN

15. Centerpiece
16. Door decoration
17. Character
18. Mask
19. Pumpkin
20. Halloween Item Not Listed

ANY OTHER HOLIDAY OR CELEBRATION

21. Centerpiece
22. Door decoration
23. Holiday Item Not Listed

AWARDS

Ribbons will be awarded through 10th place in each class.

BEST OF SHOW, Christmas	Rosette & \$25
BEST OF SHOW, Thanksgiving.....	Rosette & \$25
BEST OF SHOW, Easter	Rosette & \$25
BEST OF SHOW, Halloween	Rosette & \$25
BEST OF SHOW, Any other Holiday	Rosette & \$25

PAPER CRAFTS

Division 3515

Paper Crafts is for any craft made of paper.

Stamping: handcrafted materials utilized a stamp process to create

Scrapbooking: For all scrapbook page entries, a double page layout will be necessary for judging. Please put your pages in clear page protectors before entering. No full books accepted. **DO NOT TAPE YOUR SCRAPBOOK PAGES TOGETHER.** Wire or tie the pages together.

As a reminder, only ONE (1) entry per class.

- | | |
|---|---------------------------------------|
| 01. Stamping - Greeting Card | 07. Paper Craft - Quilling |
| 02. Stamping - Category not listed | 08. Paper Craft - Three Dimensional |
| 03. Scrapbooking - Creativity | 09. Paper Craft - Origami |
| 04. Scrapbooking - Punch art, die cuts & embellishments | 10. Paper Craft - Calligraphy |
| 05. Scrapbooking - Borders | 11. Paper Craft - Category not listed |
| 06. Scrapbooking - Category not listed | |

AWARDS

Ribbons will be awarded through 10th place in each class.

- BEST OF SHOW** **Mini-Rosette & \$30**
- 2nd Place Overall**..... **Mini-Rosette & \$20**
- 3rd Place Overall** **Mini-Rosette & \$10**

LEATHERCRAFTING

Division 3517

Exhibitors may enter in only one area - Novice, Advanced, Youth or Professional. Items may not exceed 30" in any direction.

YOUTH - Kits Permitted

- 01. Youth - stamped and/or tooled
- 02. Youth - open

ADVANCED - Kits NOT Permitted

- 05. Advanced - stamped and/or tooled
- 06. Advanced - open

NOVICE - Kits Permitted

- 03. Novice - stamped and/or tooled
- 04. Novice - open

PROFESSIONAL - Kits NOT Permitted

- 07. Leather article – stamped and/or tooled
- 08. Leather article – open

AWARDS

Leathercrafting gift cards are sponsored by Traditions Leather
Ribbons will be awarded through 5th place in each class.

- BEST OF SHOW, Youth** **Mini-Rosette & \$50 Gift Card from Traditions Leather**
- BEST OF SHOW, Novice** **Mini-Rosette & \$50 Gift Card from Traditions Leather**
- BEST OF SHOW, Advanced** **Mini-Rosette & \$50 Gift Card from Traditions Leather**
- BEST OF SHOW, Professional** **Mini-Rosette & \$50 Gift Card from Traditions Leather**
- GRAND CHAMPION OVERALL**..... **Rosette & \$50 Gift Card from Traditions Leather**

WOODTURNING

Division 3518

Exhibitors may enter in only one area - Novice, Intermediate or Advanced. Items may not exceed 30" in any direction.

NOVICE, 0-3 years experience

01. Closed/hollow form (opening is 1/3 or less than the diameter of the piece)
02. Bowl
03. Platter
04. Writing instrument
05. Lidded container
06. Ornament
07. Segmented piece
08. Spindle piece (turning between centers)
09. Class Not Listed

INTERMEDIATE, 3-6 years experience

10. Closed/hollow form (opening is 1/3 or less than the diameter of the piece)
11. Bowl
12. Platter
13. Writing instrument

(INTERMEDIATE continued)

14. Lidded container
15. Ornament
16. Segmented piece
17. Spindle piece (turning between centers)
18. Class Not Listed

ADVANCED, More than 6 years experience

19. Closed/hollow form (opening is 1/3 or less than the diameter of the piece)
20. Bowl
21. Platter
22. Writing instrument
23. Lidded container
24. Ornament
25. Segmented piece
26. Spindle piece (turning between centers)
27. Class Not Listed

AWARDS

Ribbons will be awarded through 10th place in each class.

- BEST OF SHOW, Novice Rosette & \$25**
- BEST OF SHOW, Intermediate..... Rosette & \$25**
- BEST OF SHOW, Advanced..... Rosette & \$25**

JEWELRY & BEADWORK

Division 3519

- | | |
|---------------------------------|-----------------------------------|
| 01. Beadwork - stringing | 05. Jewelry - other than beadwork |
| 02. Beawork - non-jewelry | 06. Jewelry - Matching Pieces |
| 03. Beadwork - Class Not Listed | 07. Jewelry - Polymer Clay |
| 04. Jewelry - Native American | 08. Jewelry - Class Not Listed |

AWARDS

Ribbons will be awarded through 10th place in each class.

- BEST OF SHOW Mini-Rosette & \$30**
- 2nd Place Overall..... Mini-Rosette & \$20**
- 3rd Place Overall Mini-Rosette & \$10**

POLYMER CLAY CREATIONS

Division 3520

All entries must be handcrafted by the exhibitor.

The primary decorative elements of all entries, except those in the mixed media class, must be at least 60% polymer clay. Items used to support the polymer clay are not included in the 60% requirement.

Judging Criteria:

Workmanship	30%
Creativity	30%
Appearance	40%

- 01. Sculpture
- 02. Jewelry and accessories
- 03. Beads and buttons
- 04. Household and functional
- 05. Mixed media with polymer clay

AWARDS

Ribbons will be awarded through 10th place in each class.

1st Place in Each Class..... Ribbon & \$5

BEST OF SHOW..... Rosette & \$25

BASKETWEAVING

Division 3521

Open to all basket weavers including amateurs and professionals. Exhibitors may enter up to TWO (2) items per class.

Judging Criteria:

Craftsmanship 40%
(Overall technique, Finishing, Attention to detail,
Joining of rims & edges, Sits evenly, Etc.)

Degree of difficulty 20%
(Materials, Style, & technique used in relation to execution)

01. Traditional
02. Ribbed
03. Twill variation
04. Coiled

Design 20%
(Proportion, Balance, Line, Use of Color, Individuality,
originality, or interpretation of a traditional style)

Presentation 20%
(Choice & use of material, Use of embellishments,
Overall appearance, Judges discretion)

05. Non-traditional
06. Non-wood
07. Gathered materials
08. Holiday

AWARDS

Premiums provided by Basket Weavers Guild of Oklahoma
Ribbons will be awarded through 5th place in each class.

1st Place in Each Class..... Ribbon & \$10

BEST OF SHOW..... Rosette & \$25

CLASS DEFINITIONS

TRADITIONAL

Traditional – Traditional baskets are woven from reed or cane in an over 1 under 1 construction and are used to carry or hold something.

Ribbed – Ribbed baskets have spokes of round or oval material that extend from one side to the other and are tucked into a God's Eye, or other appropriate design, on either side of the basket. They can be woven on hoops or rings that are held in place by this design. They were used for gathering eggs, melons and potatoes.

Twill Variations – Twill weave is sometimes called herringbone weave. The spokes are flush against each other rather than spread apart as in traditional weaving. The basic weave is over and under a repeating number of spokes, forming a pattern or design. There are many variations that make designs such as a diamond, arrow or "X".

Coiled – A coiled basket is sewn together with such things as waxed linen, sinew, raffia or fabric. Typically, coiled baskets are made of fabric, pine needles or native grasses that are wound, tied or sewn in rows around the basket.

NON-TRADITIONAL

Non-Traditional – These baskets have unusual designs or are made of materials not usually associated with traditional basketry. Some examples of these materials are paper, ribbon, plastic strips, wire and yarn.

Non-Wood – Non-wood baskets can be woven from anything other than wood, such as gourds, pine needles, feathers, beads, agate, bones, antlers, waxed linen, string and wire.

Gathered Materials – These baskets are made of things gathered from nature such as grapevine, honeysuckle, kudzu, grasses, bark and willow. They can be different shapes and can be woven many ways.

Holiday – Can be woven with any material, in any configuration but has to have an obvious holiday theme. Any traditional American holiday is accepted.

DEVELOPMENTALLY DISABLED CRAFTS Division 3522

The Oklahoma State Fair Creative Arts program is designed to highlight and encourage artists of all abilities. As such, we acknowledge and are inclusive of all types of special needs exhibitors. Intellectual and developmental disabilities as defined by Oklahoma Human Services (<https://oklahoma.gov/okdhs/services/dds/faq.html>)

According to the Developmental Disabilities Act (Pub.L.106-402), the term developmental disability means a severe, chronic disability that:

Is attributable to a mental or physical impairment or a combination of those impairment that occurs before the individual reaches age 22 and is likely to continue indefinitely.

Results in substantial functional limitations in three or more of the following areas of major life activity: self care, receptive and expressive language, learning, mobility, self-direction, capacity for independent living, and economic self-sufficiency. This reflects the individual's need for a combination and sequence of special, interdisciplinary, or generic services, individualized supports, or other forms of assistance that are of lifelong or extended duration and are individually planned and coordinated.

The term "developmental disability" can include several types of conditions including, but not limited to: Autism, Down syndrome, Asperger's syndrome, cerebral palsy, and epilepsy. Many states use different definitions for developmental disabilities based on the federal law. Oklahoma uses the federal definition and also adds that a person must have a primary diagnosis of intellectual disabilities to be qualified for developmental disabilities services.

Intellectual Disabilities as defined by the American Association on Intellectual and Developmental Disabilities (AAIDD 2024):

A person with significant limitations in intellectual functioning, which means a full scale IQ standard score of approximately 2 (or more) standard deviations below the mean as measured with an appropriately-normed, standardized test of intelligence. A person with significant limitations in adaptive behavior, which means a standard score of approximately 2 (or more) standard deviations below the mean measured with an appropriate and standardized test of adaptive behavior in one or more of the following domains: conceptual, social, or practical skills.

Onset of both of the above limitations during the developmental period, which means that significant limitations in both intellectual functioning and adaptive behavior in the individual have manifested before the age of 22.

Exhibitors may enter up to 2 items per class.

Items may not exceed 30" in any direction.

- | | |
|-----------------------------------|---|
| 01. Recycled craft item | 05. Clay pot craft |
| 02. Craft made from kit - textile | 06. Painting |
| 03. Craft made from kit - other | 07. Drawing (pen, pencil, crayon, charcoal) |
| 04. Wood item | 08. Miscellaneous |

AWARDS

Ribbons will be awarded through 10th place in each class.

BEST OF SHOW..... Rosette & \$25

MAJOR NEUROCOGNITIVE CRAFTS

Division 3523

The Oklahoma State Fair Creative Arts program is designed to highlight and encourage artists of all abilities. As such, we acknowledge and are inclusive of all types of exhibitors. This contest is for those with Major Neurocognitive Disorder.

Major Neurocognitive Disorder is defined as a significant decline in at least one of the domains of cognition which include executive function, complex attention, language, learning, memory, perceptual-motor, or social cognition, and loss of ability to do daily tasks.

The decline represents a change from a patient's prior level of cognitive ability, is persistent and progressive over time, and is not associated exclusively with an episode of delirium.

Generally, manifests at 55, but early on-set could be sooner.

Some examples of these major neurocognitive disorders are:

- | | |
|---------------------------|-------------------------------|
| Alzheimer disease | Multiple sclerosis |
| Creutzfeldt-Jakob disease | Normal pressure hydrocephalus |
| Dementia | Parkinson disease |
| Diffuse Lewy body disease | Pick disease |
| Huntington disease | |

Exhibitors may enter up to 2 items per class.

Items may not exceed 30" in any direction.

- | | |
|--|--------------------------|
| 01. Coloring | 06. Wood item |
| 02. Drawing | 07. Item made from a kit |
| 03. Painting (acrylic, watercolor, etc.) | 08. Mixed Medium |
| 04. Collage | 09. Miscellaneous |
| 05. Clothing item | |

AWARDS

Ribbons will be awarded through 10th place in each class.

BEST OF SHOW.....Rosette & \$25

TRIM-A-TREE CONTEST: ROAD TRIP Division 3524

Wednesday, September 16, 2026

Check-in: 6:15 - 6:45 p.m. (NO LATE CHECK-INS)

Tree Decorating: 7 - 7:45 p.m.

Judging Begins: 7:45 p.m.

Location: Oklahoma Arts Building - Lower Bay
(Please enter through west doors near Upper Bay. Other doors will be locked.)

2026 Trim-A-Tree Decorating Contest Theme: ROAD TRIP

Registration opens August 1. The first 15 registered will be accepted. If the contest is full, contact the Creative Programs department to be placed on a waitlist.

Contest requirements:

Contestants will decorate a tree with the theme of Road Trip. Think of your favorite things you get whenever you are out on the road - a hotdog, a map, car tools, air freshners - whatever makes your trip easy! The tree is 3' tall and 1.5' in diameter. Decorations may include tree topper, garland, ornaments, tree skirt, etc. Lights and electricity will not be provided. Some trees will be on table tops and some will be on the ground put on boxes. Skillful hand craftsmanship of any element of the tree decorating will be given consideration in judging. Decorations may be real or artificial, but they must hold up for the entire display time. Tree decorations should incorporate some aspect of the theme.

- Tree decorating is limited to the tree and underneath the tree - props will not be able to leave the diameter of the tree.
- Each Trim-A-Tree contestant must include a minimum of five (5) homemade ornaments that go with the theme and one other homemade tree decoration. This could be, but not limited to, tree topper, garland, tree picks, etc.
- If planning on using a tree skirt, skirt cannot be larger than 24" in diameter.
- Decorations cannot be perishable.

PLEASE NOTE: THIS CONTEST TAKES PLACE PRIOR TO THE FAIR!

Set-up and judging for the Trim-a-Tree contest will be held on Wednesday, September 16, 2026. Trees will be on display in the Lower Bay of the Oklahoma Arts Building for the ENTIRE RUN OF THE FAIR! All participants will be asked at check-in if they would like to collect their items Sunday, September 27 between 8 and 9 p.m., or Tuesday, September 29 during reclaim. ITEMS MUST BE PICKED UP BY TUESDAY or items will become the property of the State Fair. Participants who plan to pick up items Sunday will be put on a list for date of pick up. If someone else is breaking down your exhibit, please be sure they have a signed note from you.

Judging Criteria:

Overall Visual Appeal – Trees are judged on creativity and theme continuity.

Use of Theme – Contestant is able to consistently convey the theme throughout the whole display

Artistic Quality – Demonstrates artistic talent and skill in the creation or assembly of decorations.

AWARDS

Ribbons will be awarded through 10th place

1st Place..... Rosette & \$100

2nd Place..... Ribbon & \$50

3rd Place..... Ribbon & \$25

FANCY FEET CONTEST

Division 3525

Monday, September 21, 2026

Check-in: 5 - 5:45 p.m. (NO LATE CHECK-INS)

Judging Begins: 6 p.m.

Location: Oklahoma Arts Building - Lower Bay

Show off your creativity by decorating one shoe to be judged and see if you have what it takes to win 'Best of Shoe'! Decorate your single shoe with glitter, paint, handmade or purchased items. Please leave the perishable items at home! All shoes will be on display for the remainder of the Fair. Items may not exceed 30" in any direction.

Judging Criteria: Workmanship - 30%; Creativity - 30%; General Appearance - 40%

- | | | |
|-----------------------|--------------------------|---|
| 01. Boots | 03. House shoes/slippers | 05. Get Your Kicks! (Route 66 themed shoe - any shoe style) |
| 02. High heeled shoes | 04. Tennis shoes | |

AWARDS

Ribbons will be awarded through 10th place in each class.

- BEST OF SHOE**..... Rosette & \$75
- 1st Place (Each Class)** Ribbon & \$50
- 2nd Place (Each Class)** Ribbon & \$25
- 3rd Place (Each Class)**..... Ribbon & \$15

VOICE OF THE FAIR:

POETRY CONTEST

Division 3526

Friday, September 18, 2026

Check-in: 6:15 - 6:45 p.m. (NO LATE CHECK-INS)

Judging Begins: 7 p.m.

Location: Arts Annex Theater

Anyone age 14 and older is welcome to enter. Registration will be limited to the first 30 entrants. A printed copy of the poem must be submitted at check-in. The Oklahoma State Fair retains the right to publish portions of the poems for promotional purposes. Poems may be up to 2 minutes in length. The performer will be warned at 1:50 and stopped at 2 minutes. Subject matter must be G-rated with no profanity. The style may be of a rhyming or non-rhyming scheme. Order of appearance will be done through a random draw prior to competition. Audience Favorite ballots will be distributed prior to the first contestant in each class. Those voting must be present for the entire contest.

AWARDS

Ribbons will be awarded through 10th place

- BEST OF SHOW**..... Rosette & \$100
- People's Choice**..... Rosette & \$50
- Most Inspirational**..... Rosette & \$25
- Most Entertaining** Rosette & \$25

TABLE DECORATING CONTEST: ROUTE 66 STOP Division 3527

Wednesday, September 16, 2026
Check-in: 5:15 - 5:45 p.m. (NO LATE CHECK-INS)
Table Decorating: 5:45 - 6:30 p.m.
Judging Begins: 6:30 p.m.
Location: Oklahoma Arts Building - Upper Bay
 (Please enter through west doors)



2026 Table Decorating Contest Theme: Route 66 Stop

Registration opens August 1. The first 15 registered will be accepted. If the contest is full, contact the Creative Programs department to be placed on a waitlist.

Contest requirements:

Create a tablescape with ONE place setting on a 30" round table. The design should be set for a party inspired by your favorite Route 66 Stop. What are some examples? There's so many! Examples are the Gateway Arch, Chicago, Lincoln Home, the Blue Whale, the Milk Bottle - the list can go on and on! Decorations may incorporate centerpieces, decorative items, etc. Skillful hand craftsmanship of any element of the table setting will be given consideration in judging. Decorations may be real or artificial, but they must hold up for the entire display time. Table decorations should incorporate some aspect of the theme.

- Table decorating is limited to tabletop only – props will not be allowed on the floor
- Each table setting must include a menu on a 5 x 7 card and no more than one place setting with the proper utensils needed for items listed on the menu.
- Table coverings should reach to floor. (Table height is 30") A standard 90" tablecloth is appropriate.
- Decorations must be placed on the table and cannot exceed 30" height from the table top.

PLEASE NOTE: THIS CONTEST TAKES PLACE PRIOR TO THE FAIR!

Set-up and judging for Table Decorating contest will be held on Wednesday, September 16, 2026. Tables will be on display in the Upper Bay of the Oklahoma Arts Building for the **ENTIRE RUN OF THE FAIR!** All participants (or guardians) will be asked at check-in if they would like to collect their items Sunday, September 27 between 8 and 9 p.m., or Tuesday, September 29 during reclaim. **ITEMS MUST BE PICKED UP BY TUESDAY** or items will become the property of the State Fair. Participants who plan to pick up items Sunday will be put on a list for date of pick up. If someone else is breaking down your exhibit, please be sure they have a signed note from you.

Judging Criteria:

Visual Appeal - Tables are judged on creativity and theme continuity.

Menu - Menu should be balanced and reflect the theme of our party.

Setting and Proper Placement - Place setting should have proper placement and spacing of dining pieces needed for all listed menu items placed in their proper location, not including the serving plates and bowls.

AWARDS

Ribbons will be awarded through 10th place

1st Place	Rosette & \$100
2nd Place	Ribbon & \$50
3rd Place	Ribbon & \$25

BEST DRESSED PUMPKIN CONTEST Division 3528

Thursday, September 17, 2026

Check-in: 3:30 - 4 p.m. (NO LATE CHECK-INS)

Judging Begins: 4:30 p.m.

Location: Oklahoma Arts Building - Lower Bay

Contestants are asked to decorate/carve ARTIFICIAL pumpkins for this event. Real pumpkins WILL NOT be accepted. One entry per contestant. Pumpkins will remain on display for the remainder of the Fair. Participants may pick up their entries per the release instructions in the Creative Arts calendar of events.

Pumpkins can be dressed or decorated as storybook characters (Cinderella, Humpty Dumpty, Harry Potter, etc.), real characters (police officer, firefighter, nurse, etc.) or traditional Halloween characters (witch, scarecrow, Dracula, etc.). Pumpkins will be judged on originality, decorations, creativity and craftsmanship.

AWARDS

Ribbons will be awarded through 10th place

1st Place.....	Rosette & \$25
2nd Place.....	\$15
3rd Place.....	\$5
People's Choice.....	Rosette & \$30

BREAST CANCER AWARENESS: BEAUTIFUL BRAS! Division 3529

Thursday, September 17

Check-in: 6:30 - 7 p.m. (NO LATE CHECK-INS)

Judging Begins: 7 p.m.

Location: Oklahoma Arts Building - Lower Bay

Breast cancer is one of the most common cancers in women in the United States. According to the American Cancer Society, an estimated 192,370 new cases of invasive breast cancer are expected to be diagnosed this year. Today, there are more than 2.5 million breast cancer survivors living in the United States. Help support breast cancer awareness by making a bra beautiful! Bras will be judged on originality, decorations, creativity and craftsmanship. Items may not exceed 30" in any direction.

AWARDS

Ribbons will be awarded through 10th place

1st Place.....	Rosette, Medallion & \$75
2nd Place.....	Ribbon & \$50
3rd Place.....	Ribbon & \$25
4th Place.....	Ribbon & \$15
5th Place.....	Ribbon & \$10

CHRISTMAS CREATIONS: ROUTE 66 ROAD TRIP ORNAMENT Division 3530

Saturday, September 19, 2026

Check-in: 10 - 10:30 a.m. (NO LATE CHECK-INS)

Judging Begins: Noon

Location: Oklahoma Arts Building - Lower Bay

Every year, Christmas trees are filled with ornaments highlighting trips and stops families and friends have taken throughout the years together. Join us in this tradition by creating an ornament highlighting a stop on Route 66. Some of the highlights are the National Route 66 & Transportation Museum, Winslow, Arizona, Pop's, The Painted Desert, Cadillac Ranch, or any of the other famous stops along the way. Entries will be judged on quality of craftsmanship, design, originality and creativity. Contestants may bring the following supplies to complete their project (no other supplies will be allowed):

Adhesive, any type
Scissors

Glitter, max 3 colors
Stickers/gems

3 additional Route 66/Christmas items

AWARDS

Ribbons will be awarded through 10th place

- 1st Place** **Mini-Rosette & \$50**
- 2nd Place** **Ribbon & \$35**
- 3rd Place** **Ribbon & \$25**
- 4th Place** **Ribbon & \$15**
- 5th Place** **Ribbon & \$10**



OKLAHOMA MURAL CHALLENGE

Sponsored by OKC Outlets

Division 3532

Saturday, September 19, 2026

Check-in: 8:30 - 9 a.m. (NO LATE CHECK-INS)

Painting Begins: 9 a.m.

Location: General Pershing Boulevard Median



OUTLETS®

The Oklahoma Mural Challenge returns to the 2026 Oklahoma State Fair. The General Pershing Boulevard Median will become a visual wonderland on Saturday, September 19, during the opening weekend of the Oklahoma State Fair.

New for 2026: The Mural Contest will have a theme of Route 66 to celebrate the 100-year anniversary of the Mother Rode.

Artists will be selected to create their visions on 12' x 8' panels, as Fairgoers watch. Through a juried process of submitted portfolios, 21 artists will be selected to participate. Following the allotted live paint time, a judging panel will award \$2,100 in cash premiums to the top creations. All 21 murals will remain on display through the closing date of the Fair, September 27. Following the Fair, the top three (3) pieces will be relocated and placed on display at the OKC Outlets.

Competitors, after you register online, you will receive an email explaining how to submit a portfolio of 3-5 pieces of large-scale painting for consideration. The 21 accepted artists will receive a \$100 stipend for supplies in addition to the prize money for the top three (3) murals.

Teams of two will be allowed to compete. Submissions will work the same as an individual muralist with a team captain designated to be the point of contact. One stipend will be split by team, and if a team places, one check will be presented and will be split afterwards by team.

AWARDS

Premiums provided by OKC Outlets

- 1st Place** Rosette & \$1,000
- 2nd Place** Rosette & \$750
- 3rd Place** Rosette & \$250
- People's Choice** Rosette & \$100



**2025 Mural Challenge Winner
Travis Brassfield**