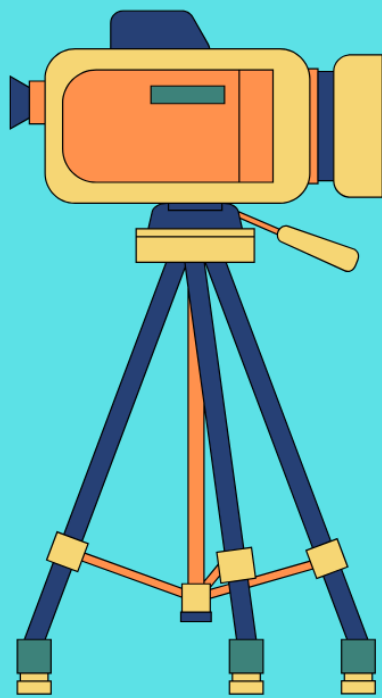




THE
Midway
OF THE
MOTHER ROAD

PHOTO- GRAPHY



'26
COMP
GUIDE

FREE REGISTRATION:

July 1 - August 15

Find Your Contests Inside!

okstatefair.com/competitions/creative-arts

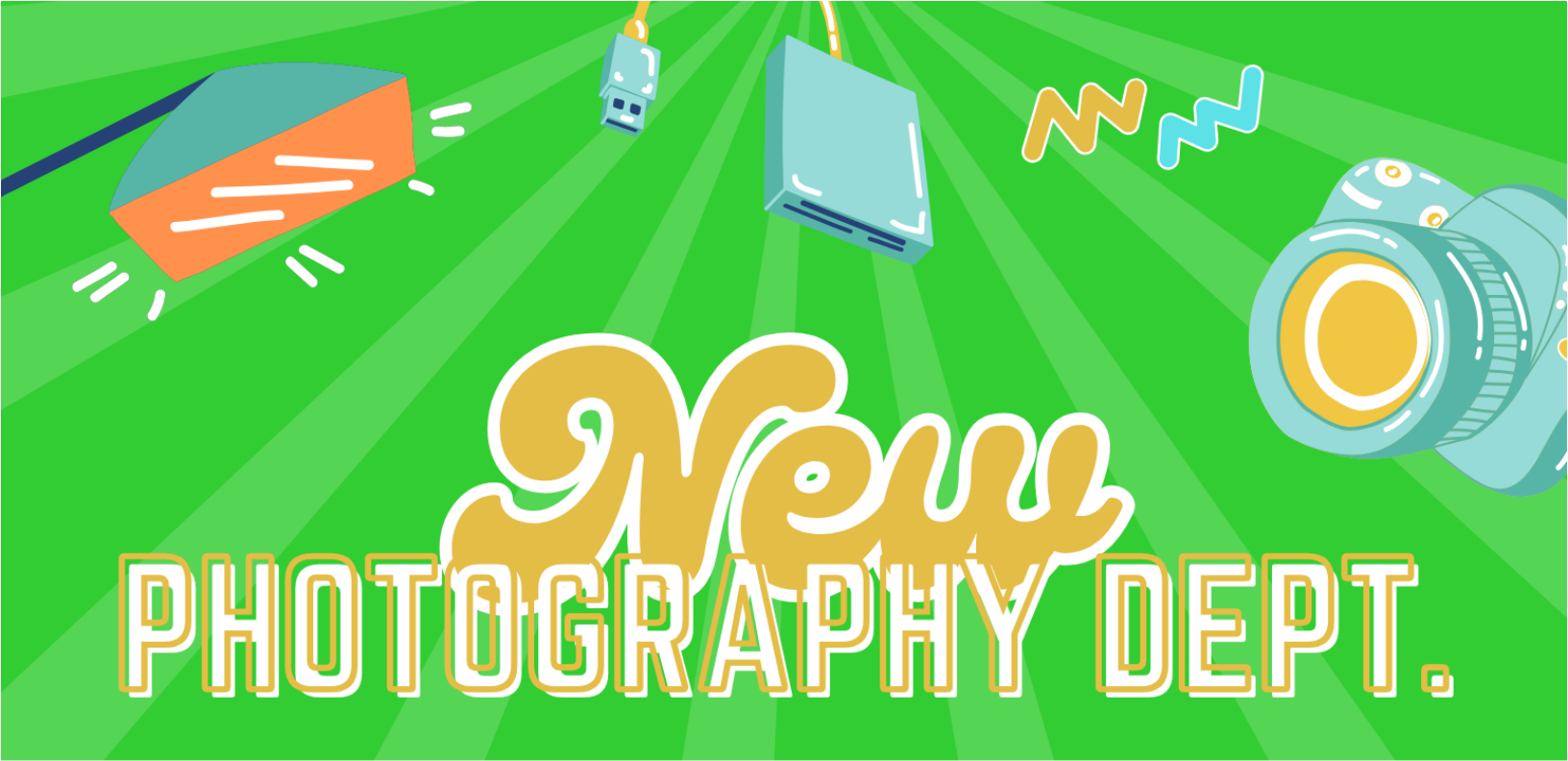


**OKLAHOMA
STATE FAIR**

MISSION STATEMENT

Oklahoma State Fair, Inc. is a 501(c)(3) not-for-profit corporation that serves the people of Oklahoma and is dedicated to continuing the organization's heritage of education, entertainment, and economic development through the operation of OKC Fair Park and the annual Oklahoma State Fair.



A green background with radiating lines. At the top left is a blue and orange lens cap. At the top center is a blue USB drive. To its right is a blue hard drive. Further right are two blue squiggly lines. On the far right is a blue camera with a yellow lens. The text 'New PHOTOGRAPHY DEPT.' is centered in a stylized, bubbly font. 'New' is in a larger, yellow font with a white outline. 'PHOTOGRAPHY DEPT.' is in a smaller, white font with a yellow outline.

New PHOTOGRAPHY DEPT.

TAKE IN WEEKEND - AUG. 29 - 30

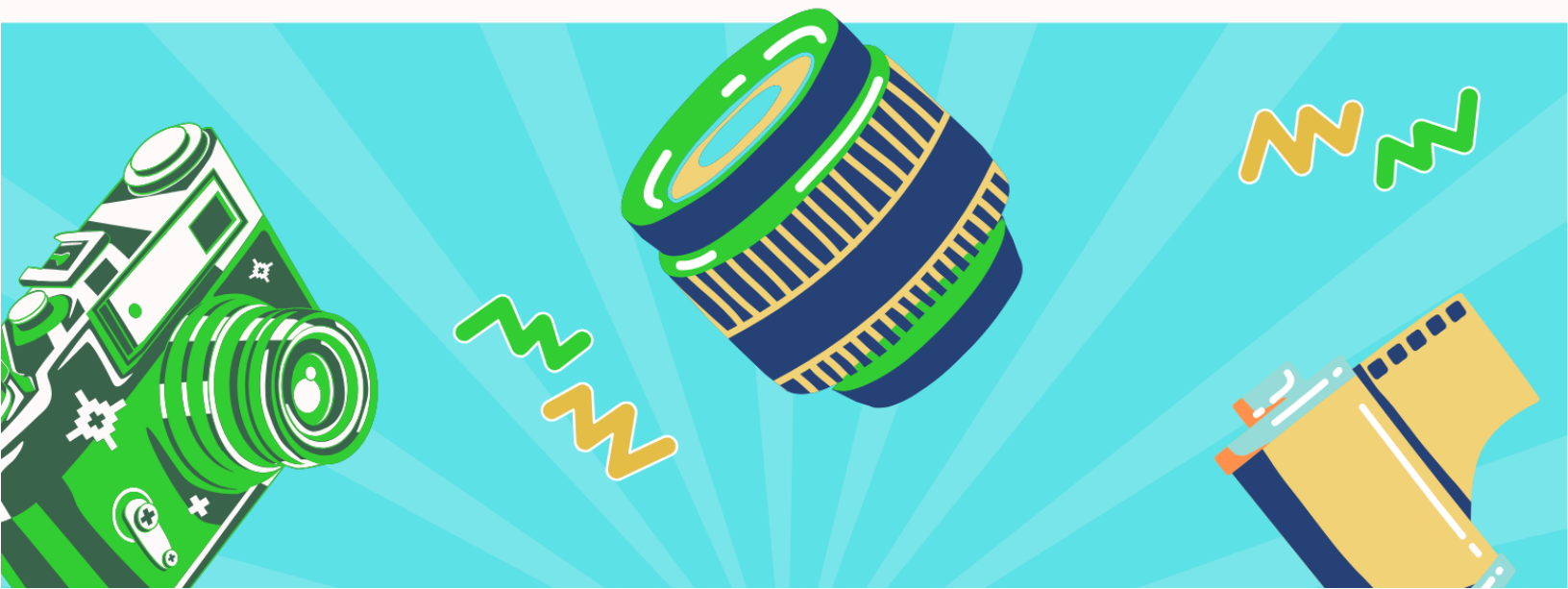
NEW PRE-FAIR & ONLINE CONTEST: FLAT WILL (PG. 10)

NEW DIVISION: PROFESSIONAL PHOTOGRAPHY (PG. 14)

NEW ADULT & YOUTH CLASSES & DIVISION SPLIT (PGS. 12 & 13)

BOOK FACE CONTEST (PG. 16)

RECLAIM : A DAY LATER - TUESDAY, SEPT. 29 - 30



2026 Creative Arts Program Photography Competition Guide

Table of Contents

Click on each contest to get more information!

Oklahoma State Fair Mission Statement.....	Pg. 2
What's New	Pg. 3
Calendar of Events	Pg. 5
Social Media Info	Pg. 6
Creative Arts Drop-Off, Pick Up & Directions	Pg. 7
Entry Info & Department Regulations	Pg. 8
Preparing Your Photos For Display	Pg. 9

PHOTOGRAPHY DIVISIONS:

ONLINE: Flat Will Rogers.....	Pg. 10
ONLINE: Photos from the Fair.....	Pg. 11
Photography Show - Amateur (3801).....	Pg. 12
Photography Show - Youth (3802).....	Pg. 13
Photography Show - Professional (3803)	Pg. 14
LIVE: Digital Photography Shootout (3804).....	Pg. 15
LIVE: Book Face Photo Contest (3805).....	Pg. 16
Photography Glossary Terms	Pg. 17

STAFF CONTACTS

Carol Bertels
Superintendent
405-706-8878

Morgan Chappell
Creative Programs Manager
CreativePrograms@okstatefair.com
405-948-6731

2026 Creative Arts Quick Reference Guide

Creative Arts registrations must be submitted online.

Starting July 1, [CLICK HERE](#) to register.

Competition Guides

Posted Online:

Monday, June 1

Registration:

Wednesday, July 1, 9 a.m. - Saturday, August 15

Deliver Exhibits:

Saturday, August 29, 10 a.m. - 4 p.m.

Sunday, August 30, 11 a.m. - 4 p.m.

Pick Up Exhibits:

Tuesday, September 29, 10 a.m. - 7 p.m.

Wednesday, September 30, 9 a.m. - 2 p.m.

Creative Arts Calendar of Events

Schedule for free registration: July 1 at 10 a.m. through August 15

FREE REGISTRATION MUST BE DONE ONLINE. If you do not have computer access, please go to your local library or contact your local OSU Cooperative Extension Services.

Late registration: We will no longer accept late registration, but we will have on-site registration during take-in.

On-site registration: August 29, from 10 a.m. to 4 p.m. and August 30, from 11 a.m. to 4 p.m. Exhibitors will be charged a \$12 fee per exhibitor (not per entry). **Credit or Debit cards will only be accepted.**



CALENDAR

- June 1** New competition guides posted online.
- July 1** Online registration opens at 10 a.m.
- August 15** Entry deadline for the Oklahoma State Fair Creative Arts competitions and contests. Free registrations must be received online by August 15.
- August 16** **We will no longer accept late online registrations,** but you will be able to register on site during take-in with a small fee of \$12 per exhibitor. All entries will be turned in on the listed check-in days or on the day of the live contest.
- August 29** Entry clerks will receive items at the Arts Annex from 10 a.m. to 4 p.m. Late registration will be available to enter with a \$12 late registration fee done electronically.
- August 30** Entry clerks will receive items at the Arts Annex from 11 a.m. to 4 p.m. Late registration will be available to enter with a \$12 late registration fee done electronically.
- August 31 - September 16** All Creative Arts entries judged (excludes live contest entries). This is closed judging. Exhibitors are not permitted to attend. We encourage you to come to the Fair to view results. Judging results will be posted online as soon as they are available, possibly after the end of the State Fair. **Do not call or email to ask for results. They cannot be given out prior to posting.**
- September 17** Oklahoma State Fair opens! The Creative Arts Building & the Arts Annex will host a series of demonstrations, live contests, and special events every day of the Fair.
- September 27** Last day of the Oklahoma State Fair.
- September 29** Entry clerks will release exhibits upon presentation of claim check at the Creative Arts Building from 10 a.m. to 7 p.m.
- September 30** Entry clerks will release exhibits upon presentation of claim check at the Creative Arts Building from 9 a.m. to 2 p.m. Items not picked up become property of the Oklahoma State Fair.



SHOW US WHAT YOU'RE WORKING WITH

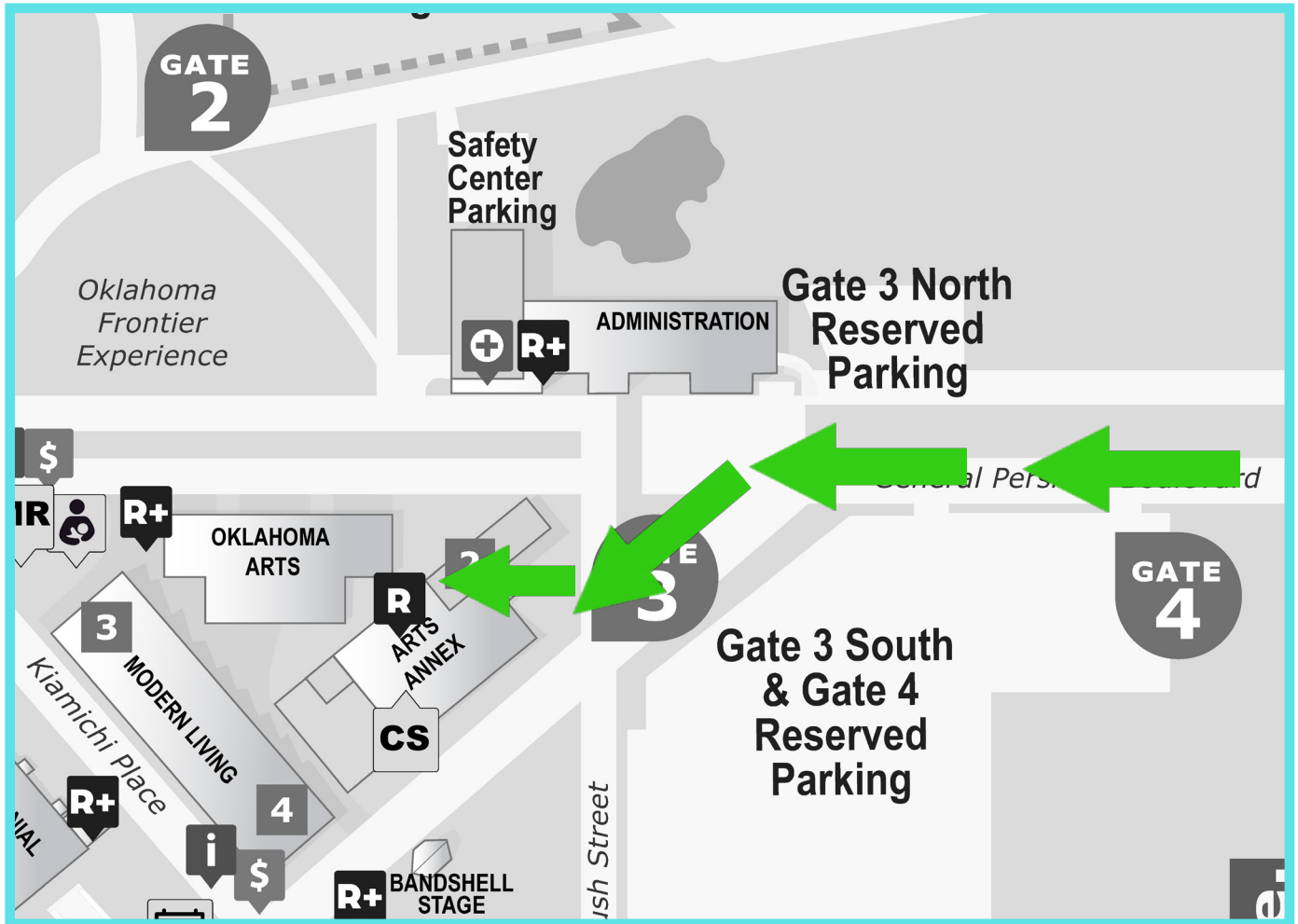


We know sometimes it takes all year to create something magical to enter in the Fair, or just a few days! Share your progress with us! Tag the Fair when you share your creations and ribbons by using #okstatefair!



@okstatefair

Creative Arts Drop-Off & Pick Up Map & Information



How To Get Here: Pre-Fair

Our physical address is 3000 General Pershing Blvd. Oklahoma City, OK 73107.

From I-44 take the NW 10th St. eastbound exit and follow until NW 10th St. and May Ave. (2nd light). Turn south onto May Ave. Proceed to Gate 3 (1st light) and drive towards the gate. You will then enter OKC Fair Park and make your way to the Arts Annex.

Drop-Off Information

Drop-off is Saturday, August 29 from 10 a.m. - 4 p.m. and Sunday, August 30 from 11 a.m. - 4 p.m. At check-in you will be given a claim check tag. PLEASE SAVE THESE as they are what you will need to pick up your item(s).

Pick Up Information

Pick up is Tuesday, September 29 from 10 - 7 p.m. and Wednesday, September 30 from 9 a.m. - 2 p.m. Please remember to bring your claim check tag as this is how you reclaim your pieces. If you have misplaced your claim check tag, please bring a current photo ID of the exhibitor.

CREATIVE ARTS RULES AND REGULATIONS

ENTRY INFORMATION

Who can enter? ONLY OKLAHOMA RESIDENTS may enter our contests. Exhibitors entering must be amateurs unless an Open/Master (expert) Division is offered.

Who is considered an amateur? Someone who earns less than 10% of their income from this skill. If you have taught this craft before, or currently teach, you are not considered an amateur, but may enter in an open class, if available.

Are there any size limitations? Furniture may be no larger than 40" in any direction. All other exhibits are limited to 30" in any direction.

How many exhibits can be entered? ONE ENTRY PER CLASS (unless otherwise stated.) There is no limit on the total number of entries per exhibitor overall. Photography is the exception with 14 total entries allowed per exhibitor. All entries must have been completed since the final day of the previous Oklahoma State Fair.

Can I enter something I have entered in the past? No. Unless otherwise specified, items can only be entered once.

What is the cost to enter? CREATIVE ARTS ENTRIES ARE FREE if registered by August 15. (Only the wine contest requires an entry fee.)

May I mail in my exhibit? No.

Do I need to pre-register for live contests? Yes. All registration is online and you cannot register the day of on-site.

How do I get into the Fair if I am entered in a live contest? **ONLY EXHIBITORS** receive FREE ENTRY AND PARKING with live contests. Family and friends will need to purchase a ticket to get in the day of the contest. Please check out our pre-sale of tickets starting in July and ending the day before the start of the Fair.

All entries must be the work of the exhibitor and completed since the previous Oklahoma State Fair except as noted.

CREATIVE ARTS DEPARTMENT REGULATIONS

- The Oklahoma State Fair reserves the right to disqualify or reject any exhibit in its sole discretion and does not follow general Fair guidelines, or if it requires an excessive amount of space, or if the capacity of the department has been reached. Any contest may be cancelled for lack of entries.
- Each item turned in is completed by one person, unless otherwise noted in the competition information.
- All work must be original. Art reproduced or rendered from works of masters, from advertisements, materials from published sources, or from widely circulated photographs is not original. Artificially Intelligence (AI) generated art is not allowed, unless specified by the rules.
- Your items will be handled with care, however, Oklahoma State Fair, Inc. is not responsible for items that are damaged or lost while on display during the Fair. If the exhibitor feels it necessary, they must purchase their own insurance at their own expense. Exhibitors MAY NOT supply their own display stands. Only OSF stands will be used for display.
- Each exhibit will be evaluated by qualified individuals and the decision of the judge(s) is final. All cash prizes will be paid from the awards as marked by the judges and not from ribbons that may be attached to the exhibits. Judges are instructed not to award cash prizes unless the exhibit is deemed worthy of the placing awarded. Premium payouts for the Creative Arts Department will be mailed to exhibitors after the close of the Fair.
- Within 90 days from the last day of the 2026 Oklahoma State Fair, it is the responsibility of the Payee to file, in writing, a claim for lost or incorrect awards.
- If it is ascertained that an exhibitor has made any false statement with regards to any article or exhibit, or if any exhibitor attempts to harass or interfere with the judge or judges in the performance of their duties, the exhibitor shall be excluded from competition and forfeit all premiums.
- Any protest must be made in writing and accompanied by a deposit of \$50, which will be forfeited if protest is not sustained. Said protest must state plainly the cause of complaint or appeal and must be filed with the Creative Programs Manager by 5 p.m. on Thursday of the closing week of the Fair. Judges will be encouraged to view exhibits after items have been placed on display with names. If they believe that an exhibitor is not in the correct skill level, that judge will be encouraged to protest the placement.
- Every effort will be made to display entries in an attractive arrangement; however, items entered for competition will be displayed through 3rd place. Other entries will be displayed only as space is available and at the discretion of the superintendents.

GENERAL PHOTOGRAPHY RULES

It is the photographer's responsibility and not the obligation of the Oklahoma State Fair to secure a release of any individual or sacred site/event in a photograph.

All photographic entries must be created by the entrant. Photographs created in any part by the use of Artificial Intelligence (i.e., not by the use of a camera) will be automatically disqualified. Artificial intelligence is commonly abbreviated as "AI".

Photos can be taken by the photographer in the past two years.

Please put your name on the back of the photo (not the matting).

No weapons, weapon casing, depiction of violence or items alluding to violence/weapons allowed.

PREP YOUR PHOTOS FOR DISPLAY

Photos are turned in physically during exhibit delivery and NOT DIGITALLY. All photos must be 8" x 10" or 8" x 12" in size and mounted on top of an 11" x 14" black backing, OR 8" x 8" and mounted on top of an 11" x 11" black backing. Please remove the white border from around the photo. Photos may be mounted on top of a solid piece of cardstock, poster board, matte board or black foam core. Photos with a cut matte on top of the picture WILL NOT be accepted. Photos must not be titled or identified on the front but identifying information will be accepted on back of print. Photos will not be accepted if they do not follow these requirements.

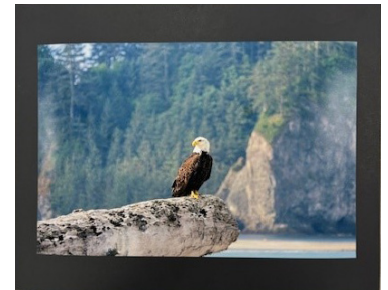
PROPERLY MOUNTED PHOTOS



8" x 10" picture
11" x 14" black backing



8" x 12" picture
11" x 14" black backing



8" x 12" picture
11" x 14" black backing



INCORRECTLY MOUNTED PHOTOS



Do not turn in an image on a stretched canvas/wood canvas



No writing on the front



No Framed Photos

ONLINE PHOTOGRAPHY CONTEST FLAT WILL - ON THE ROAD TO THE FAIR! NOW - AUGUST 15 ONLY!

The Mother Road – a road considered a lifeline for families, path to new possibilities, and connecting America from (almost) sea to shining sea – is celebrating its centennial year in 2026. To celebrate this joyous 'mile marker,' the Oklahoma State Fair wants to see your adventures – possibly on Route 66, but essentially American – with Oklahoma's Favorite Son 'Flat Will' (Rogers – if you're new here) riding shotgun.

Bring Flat Will on your summer adventures in front of Route 66 icons, American wonders (Mount Rushmore was finished 6 years after his death), truly American pastimes (summer baseball), or your favorite summer hangout (would Flat Will enjoy a trip to a state park?).

Your creative, family-friendly photo must be submitted to the Oklahoma State Fair according to the posted rules by Saturday, August 15 using the link provided. Make sure this is your best shot, because the top 10 in each category receive awards. The two categories are adult & youth. No professionals will be able to participate.

First place in each category will receive a prize pack of four (4) Oklahoma State Fair season passes, four (4) carnival armbands, one (1) season parking pass and a \$50 cash prize. Places 2 through 10 in each category will receive two (2) outside gate admission tickets, good on any one day of the 2026 Oklahoma State Fair so you can come see your prize-winning photo on display.

The Rules:

- This contest is open to all ages. Amateurs only.
- One entry per person
- Photo must be no greater than 10MB.
- Photo can be black & white, color, or sepia.
- Activities in the photo must be family-friendly.
- Flat Will must be highlighted in the photo.
- Do not manipulate Flat Will's size or accessories. Keep Flat Will in his traditional garb. Decorate Flat Will to merge his and your style together without adding anything out of character for a cowboy.
- When submitting your Flat Will entry, you will be asked to give a brief description of Flat Will's adventure!
- The Oklahoma State Fair, in its sole discretion, reserves the right to disqualify any photo.
- Monetary prizes will be paid according to OSF general Creative Arts rules by check made out to the name and address of entrant, provided via the digital entry form. For this contest, the check will be made available at the time the other prizes are either picked up or mailed. Items lost in the mail may not be replaced.

All applicants must enter their submissions on the State Fair entry page found at <https://okstatefair.wufoo.com/forms/m19z6ne51xkxt22/>

Entries will be accepted from now through Saturday, August 15, 2026. Late entries will not be accepted. Winners will be announced before the Fair.

By submitting your entry, you are giving the Oklahoma State Fair permission to reproduce your image in any display, merchandise, publication or printed material without compensation.

ONLINE PHOTOGRAPHY CONTEST

PHOTOS FROM THE FAIR

JUNE 15 - JULY 2 ONLY!

If you have ever attended the Oklahoma State Fair, chances are you captured some memories with a camera. Send in your favorite Fair photos for your chance to win season passes for the 2026 Oklahoma State Fair – that's one admission for each day!

The Rules:

- This contest is open to all ages. Amateurs only.
- All photos must be no greater than 10MB.
- The photos can be black & white, color, or sepia.
- One entry, per person, per category.

All applicants must enter their submissions on the State Fair entry page found at <https://okstatefair.wufoo.com/forms/zvu0x-ex1crf2ej/>

Entries will be accepted from Monday, June 15, 2026 through Thursday, July 2, 2026. Late entries will not be accepted. Winners will be announced mid-July.

By submitting your entry, you are giving the Oklahoma State Fair permission to reproduce your image in any display, merchandise, publication or printed material without compensation.

Categories

Animals & Agriculture Aficionado: From prize-winning livestock to antique tractors and farm machinery on display, give us your best shot.

Carnival Ride Renegades: Spinning, riding, or upside-down, submit your best photo from the carnival midway. This does not include Ferris Wheel Photos.

Fair Favorites: This is a "wild card" category of sorts. Show us what you love about the Oklahoma State Fair!

Fair Food Fanatix: From traditional to unique, we're looking for the best Fair food photos.

Wheel Watchers: The Oklahoma State Fair has three Ferris Wheels - show off your snapshot of one of them!

AWARDS

The top photo in each category will receive two (2) adult season passes and one (1) season parking valid for all days during the 2026 Oklahoma State Fair, September 17 - 27.

These five winning photos will be on display in the photography exhibit during the Fair and will receive first place rosettes. There will be a 'Best Of Show' voted for the top five photos.

PHOTOGRAPHY SHOW

AMATEUR

Division 3801

Due to class size limitations, exhibitors may only enter one photo per class, up to 14 entries total.

Note: Young photographers may choose to enter in the adult class but may not enter both youth and adult.

Important:

Please check on previous pages how to submit your photography. As a reminder, photos will be turned in physically, NOT digitally.

Only amateur photographers may enter this class. The Oklahoma State Fair defines a professional as anyone who promotes the sale of their images/services through any means and must enter the professional categories regardless of the percentage of their total income. This includes a promotion of your images/services on social media pages. If an entrant is found to have either of these, they will be disqualified from the contest.

All photos must be taken by the exhibitor. Taking a photo of another photo does not make it eligible for entry by an exhibitor. Black & white or color photos are accepted in all classes. Photos previously entered in the Oklahoma State Fair are not eligible for entry. Misclassified photos will be moved to the appropriate class, if possible. Photos will not be released early.

- | | |
|--|---|
| 01. Wildlife – mammals | 15. Still life |
| 02. Wildlife – birds | 16. Action |
| 03. Wildlife – bees | 17. Sports – Basketball |
| 04. Wildlife – insects other than bees | 18. Planes, Trains & Automobiles |
| 05. Wildlife – marine, lizards, etc. | 19. Aerial photos (photos from drones, airplanes, etc.) |
| 06. Rural Oklahoma – structures | 20. Twilight/Nighttime |
| 07. Rural Oklahoma – landscapes | 21. Weather |
| 08. Urban Oklahoma | 22. At the Fair |
| 09. Americana (Other 49 states) – urban | 23. Pets |
| 10. Americana (Other 49 states) – rural | 24. Floral |
| 11. International | 25. Route 66 |
| 12. Holiday (Christmas, Easter, Halloween, etc.) | 26. Selfies |
| 13. Geometric & abstract patterns | 27. Color of the Year – Blue |
| 14. Portraits | 28. Class Not Listed |

AWARDS

Ribbons will be awarded through 10th place in each class. Honorable mention ribbons will be awarded for up to 50 adult entries and up to 15 youth entries. Best of Show will receive a certificate for one year membership to Photographic Society of America. A Superintendent's Choice will be chosen from either the Amateur, Youth, or Professional Division, not one in each division.

BEST OF SHOW Amateur Rosette, Medallion, PSA one-year Membership & \$125

PORTFOLIO AWARD Amateur Rosette & \$50**

SUPERINTENDENT'S CHOICE Rosette & \$25

**Portfolio Award is presented to the exhibitor with the highest number of points in division 3801. Each 1st place win counts as 3 points, 2nd place counts as 2 points, 3rd place counts as 1 point.

PHOTOGRAPHY SHOW YOUTH Division 3802

Due to class size limitations, exhibitors may only enter one photo per class, up to 9 entries total.

Important:

Please check on previous pages how to submit your photography. As a reminder, photos will be turned in physically, NOT digitally.

Note: Young photographers may choose to enter in the adult class but may not enter both youth and adult.

All photos must be taken by the exhibitor. Taking a photo of another photo does not make it eligible for entry by an exhibitor. Black & white or color photos are accepted in all classes. Photos previously entered in the Oklahoma State Fair are not eligible for entry. Misclassified photos will be moved to the appropriate class. Photos will not be released early.

01. Nature and wildlife
02. Landscapes
03. Pets
04. Weather
05. Geometric
06. Portraits
07. Action
08. Selfies
09. Sepia or black & white
10. At the Fair
11. Route 66
12. Color of the Year – Blue
13. Class Not Listed

AWARDS

Ribbons will be awarded through 10th place in each class. Honorable mention ribbons will be awarded for up to 50 adult entries and up to 15 youth entries. Best of Show will receive a certificate for one year membership to Photographic Society of America. A Superintendent's Choice will be chosen from either the Amateur, Youth, or Professional Division, not one in each division.

BEST OF SHOW Youth Rosette, Medallion, PSA one-year Membership & \$75

PORTFOLIO AWARD Youth Rosette & \$50**

SUPERINTENDENT'S CHOICE Rosette & \$25

**Portfolio Award is presented to the exhibitor with the highest number of points in division 3802. Each 1st place win counts as 3 points, 2nd place counts as 2 points, 3rd place counts as 1 point.

PHOTOGRAPHY SHOW PROFESSIONAL Division 3803

Due to class size limitations, exhibitors may only enter one photo per class, up to 4 entries total.

Note: Young photographers may choose to enter in the adult class but may not enter both youth and adult.

Important:

Please check on previous pages how to submit your photography. As a reminder, photos will be turned in physically, NOT digitally.

Only professional photographers may enter this class. The Oklahoma State Fair defines a professional as anyone who promotes the sale of their images/services through any means and must enter the professional categories regardless of the percentage of their total income. This includes a promotion of your images/services on social media pages. If an entrant is found to have either of these, they will be disqualified from the contest.

All photos must be taken by the exhibitor. Taking a photo of another photo does not make it eligible for entry by an exhibitor. Black & white or color photos are accepted in all classes. Photos previously entered in the Oklahoma State Fair are not eligible for entry. Misclassified photos will be moved to the appropriate class. Photos will not be released early.

- 01. Wildlife
- 02. Oklahoma
- 03. Americana (Other 49 states)
- 04. Portraits
- 05. Still life
- 06. Action
- 07. Floral
- 08. Route 66
- 09. Class Not Listed

AWARDS

Ribbons will be awarded through 10th place in each class. Best of Show in each division will receive a certificate for one year membership to Photographic Society of America. A Superintendent's Choice will be chosen from either the Amateur, Youth, or Professional Division, not one in each division.

BEST OF SHOW, Professional Rosette, Medallion, PSA one-year Membership & \$125

SUPERINTENDENT'S CHOICE Rosette & \$25

OKLAHOMA STATE FAIR SHUTTERBUGS: LIVE DIGITAL PHOTO SHOOTOUT

Division 3804

Sunday, September 20, 2026

- 1 p.m. - Check-in at Arts Annex
- 3 p.m. - Upload Photos
- 5 - 5:30 p.m. - Judging
- 6 p.m. - Awards Announcement

Space is limited to the first 50 exhibitors who pre-register in each class.

After check-in and instructions are given, participants will be released into the Oklahoma State Fair to shoot-it-out with other digital photographers. Participants must return to the Arts Annex by 3 p.m. to upload the image of their choice from their camera memory card.

PLEASE REMOVE ALL PHOTOS FROM THE SELECTED FILE IN YOUR MEMORY CARD BEFORE STARTING THE CONTEST.

Participants may submit only ONE photo for judging. Submitted photos from all participants must include the element provided to them at check-in.

Judging will take place from 5 - 5:30 p.m. All images will be compiled into a slide show. Participants and fairgoers will then vote for three of their favorites, with the top three vote recipients placing first through third.

NO DIGITAL ALTERATIONS or CROPPING! This includes any in-camera adjustment options.

NO TRIPODS ALLOWED. Tripods are a tripping hazard and will not be permitted. Monopods are allowed.

By participating in this contest, exhibitors are giving their permission to the Oklahoma State Fair to reproduce their image in any Fair publications, printed materials or merchandise without compensation.

Only amateur photographers may enter. An amateur derives no more than 10% of their income from photography.

Classes:

- 01. Adults
- 02. 18 years or younger

Ribbons will be awarded through 10th place in each class.

AWARDS

- 1st Place (in each class) Rosette & \$50
- 2nd Place (in each class) \$25
- 3rd Place (in each class) \$15

BOOK FACE PHOTO CONTEST Division 3805

Put your best 'face' forward! Use a book to create a striking photo that blurs the line between reality, making it one with yourself. Line your face (or arm) with a book and let it go! Remember, keep it family-friendly - including book titles!

Photos will be on display for one week and be voted on by the public. During the second weekend, ribbons will be attached to the photos.

Photos must be able to be printed by the Oklahoma State Fair for display. Photo must be in the size of 8" x 10".

AWARDS

Ribbons will be awarded through 10th place. Premiums sponsored by Friends of the Library.

- 1st Place** **Rosette & \$50**
- 2nd Place**..... **\$25**
- 3rd Place**..... **\$15**
- People's Choice**..... **\$25**
- Most Creative** **\$25**
- Best Use of Book Title** **\$25**
- Most Accurate** **\$25**



PHOTOGRAPHY GLOSSARY

Below is a glossary of what each class of competition of the Photography Department requires. If you have questions, please refer to the definitions.

Wildlife - Mammals - A warm-blooded vertebrate with hair. Some examples are dogs, lions, monkeys, etc.

Wildlife - Birds - Characterized by feathers, toothless beaked jaws, lay hard-shelled eggs, have wings. Some examples are hummingbirds, owls, flamingos, penguins, eagles, hawks, etc.

Wildlife - Bees - A small buzzing animal that could potentially pollinate flowers, food, etc.

Wildlife - Insects, other than bees - A small animal with six legs, a body divided into three parts and usually two pairs of wings, or more generally any similar very small animals. Some examples are ladybugs, beetles, crickets, etc.

Wildlife - Marine, Lizards, etc. - Ocean animals, reptiles, etc. Some examples are dolphins, snakes, etc.

Rural Oklahoma - Structures - A structure found in the rural area of Oklahoma. Some examples are barns, silos, abandoned buildings, homes in rural areas, etc.

Rural Oklahoma - Landscapes - Landscapes found in the rural parts of Oklahoma. Some examples are cropland, forests, grasslands, pastures, rivers, etc.

Urban Oklahoma - A town or a city in Oklahoma. Examples of cities in Oklahoma are OKC, Edmond, Duncan, Stillwater, Norman, etc.

Americana (Other 49 States) - Urban - A town or a city in America. Some cities are New York City, Dallas, Miami, Denver, Kansas City, etc.

Americana (Other 49 States) - Rural - Countryside, rather than a town, located in America. Some examples are farmland, lakes, bodies of water, mountain ranges, etc.

International - Location not inside of the U.S. Some examples are photos with landmarks not from the U.S. Could include famous structures, culturally appropriate buildings, waterways, etc.

Holiday (Christmas, Halloween, etc.) - Something celebrating a holiday. Some examples are Mardi Gras, Christmas, Easter, Halloween, 4th of July, etc.

Geometrics & Abstract Patterns - Geometric is considered a series of shapes in patterns. Abstract is considered something that does not attempt to represent an accurate depiction of a visual reality, but instead uses shapes, colors, forms and gestural marks. Some examples of geometric is considered patterns, patterned repetitive art with hard shapes and abstract art is swirls, non straight lines, etc.

Portraits - An image of a person that clearly displays their likeness and may not often display an aspect of their personality. Can be formal or casual. Examples are senior portraits, staged family photos, presidential photos, kids playing, family picture, relaxed, etc.

Still Life - An arrangement of inanimate objects contrasting with other items in texture. Examples include, but are not limited to, florals placed around bowls, dolls placed in a scene, building toys arranged artfully.

Action - This is capturing an object in action and displaying it in a single image. Some examples are falling, kid playing sport, movement of material, etc.

Sports - Basketball - Photos of people playing basketball, action shots. This could be a photo of little league basketball, pick up games or Thunder photos, if you took it!

Planes, Trains & Automobiles - Something that is a plane, train or automobile. Some examples are train on track, a car parked or in motion, a plane flying in the air, etc.

Aerial Photos - Photos taken from the sky. This could be from an airplane, a drone other other aerial form.

Digitally Enhanced Art - Images that have been specifically altered for the purpose of making the subject of the photo and the photo itself look better than the camera and lighting by itself was able to capture. Some examples are red umbrella brought out, color changed, movement of item added, etc.

Twilight/Nighttime - A time when the sun sets below the horizon but sunlight is scattering into the upper atmosphere and lighting the lower atmosphere, or when the photo is taken at night. Some examples are golden hour photos, neon at night, etc.

Weather - Photographing during storms and lightning. Some examples are rain clouds, snow, snowed in items, tornados, rainbows, etc.

At The Fair - Activities or people at the Oklahoma State Fair, and only the Oklahoma State Fair. Some examples are people riding the ferris wheels, Creative Arts Exhibits, animals competing, people at the Fair!

Pets - A human's pet. Some examples are dogs, cats, fish, lizards, etc. Can be taken with a human, but not big/illegal animals.

Floral - Photos of flowers, plants, trees & large field of flowers. Can be one or more flowers or close ups or anything that has flowers in it.

Route 66 - A photo of any of any stops on Route 66. Can be as simple as a Route 66 sign or something along the stop - like the Catoosa Whale or the start and end, like the Santa Monica Pier! You might be asked where it is to verify the image.

Selfies - A self-portrait, taken by you! Photo of the person submitted. Can have more than one person in it. Must be a close up.

Color of the Year - Blue - A photo where the color blue is highlighted. The whole photo does not need to be blue, but it must be the main color of the photo.

Class not listed - Anything not listed from above. Please take time to find where your item will fit.